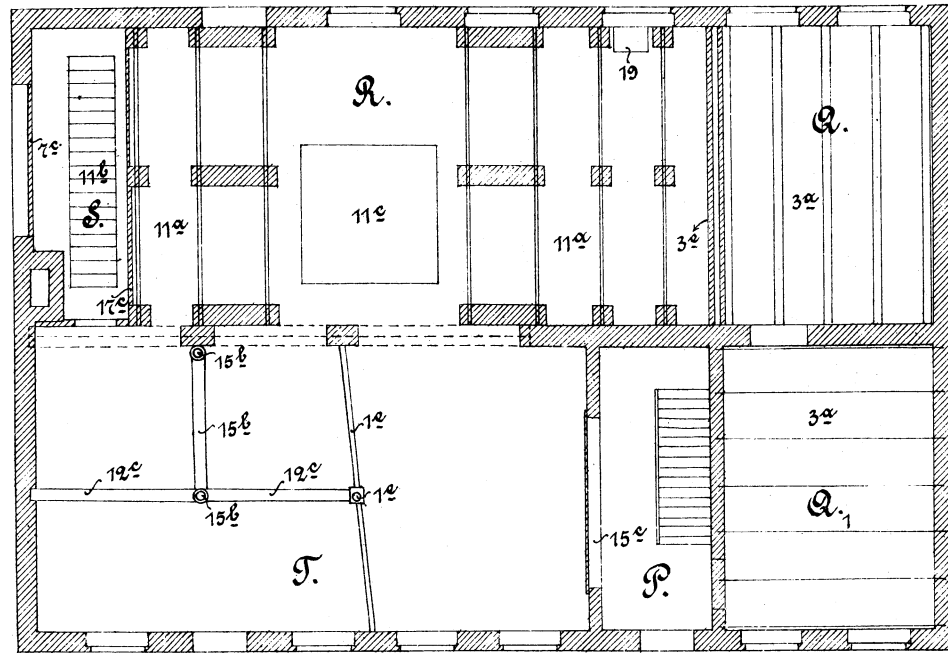
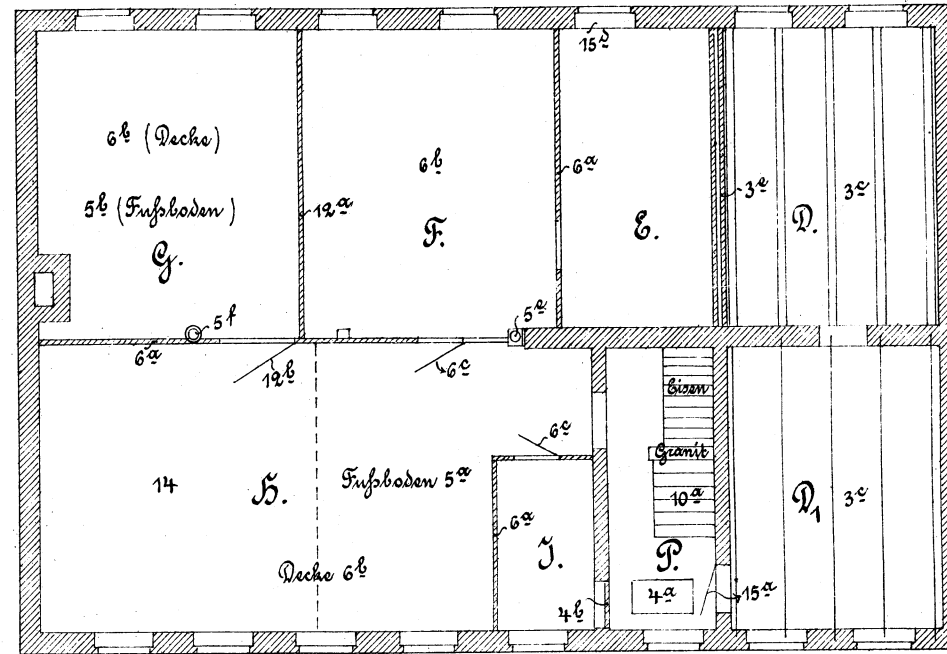


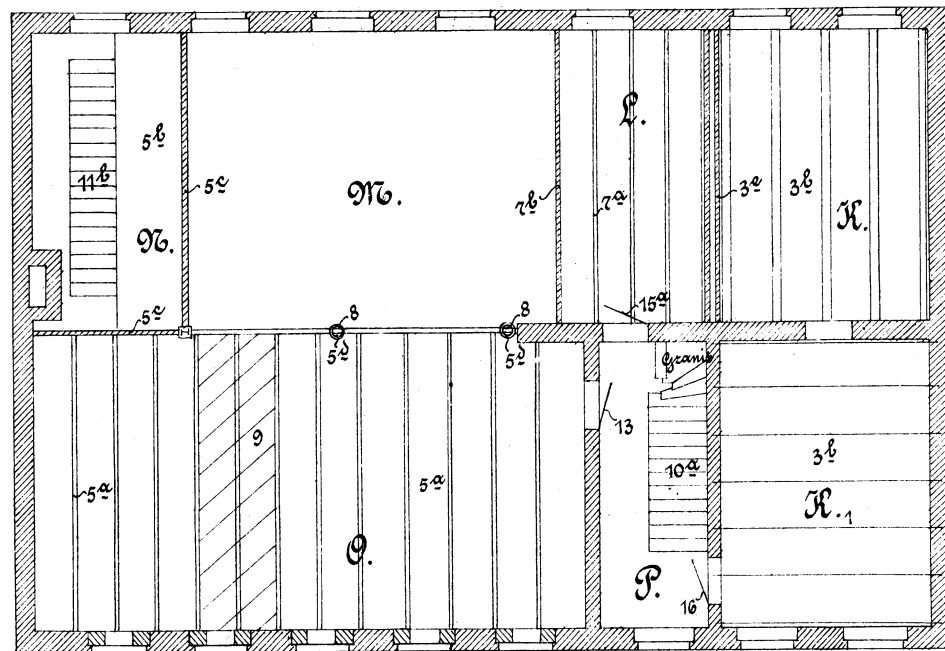
Erdgeschoss.



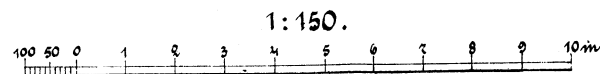
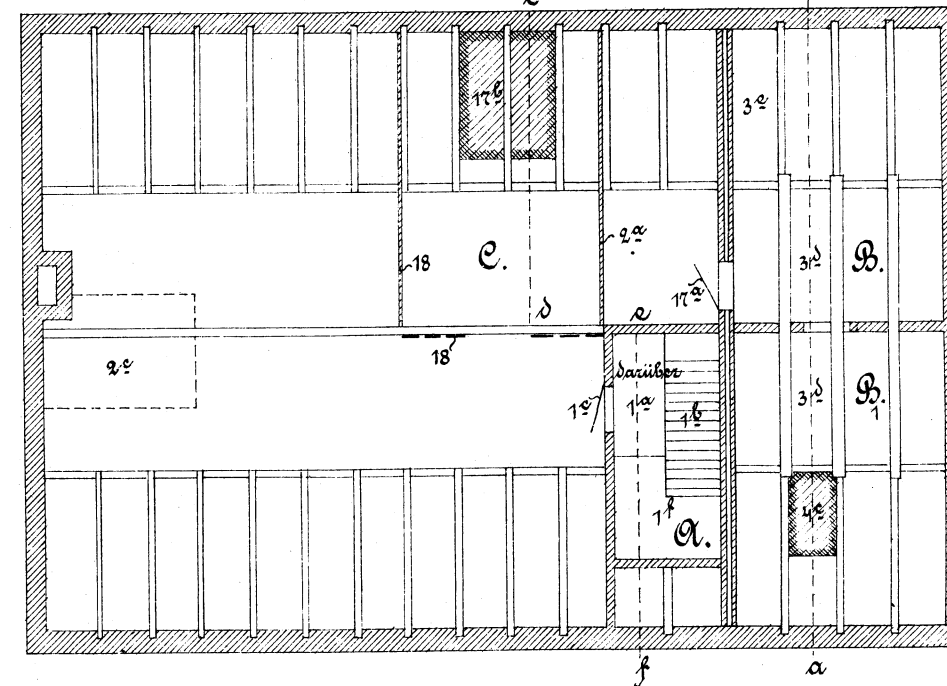
II. Stockwerk.

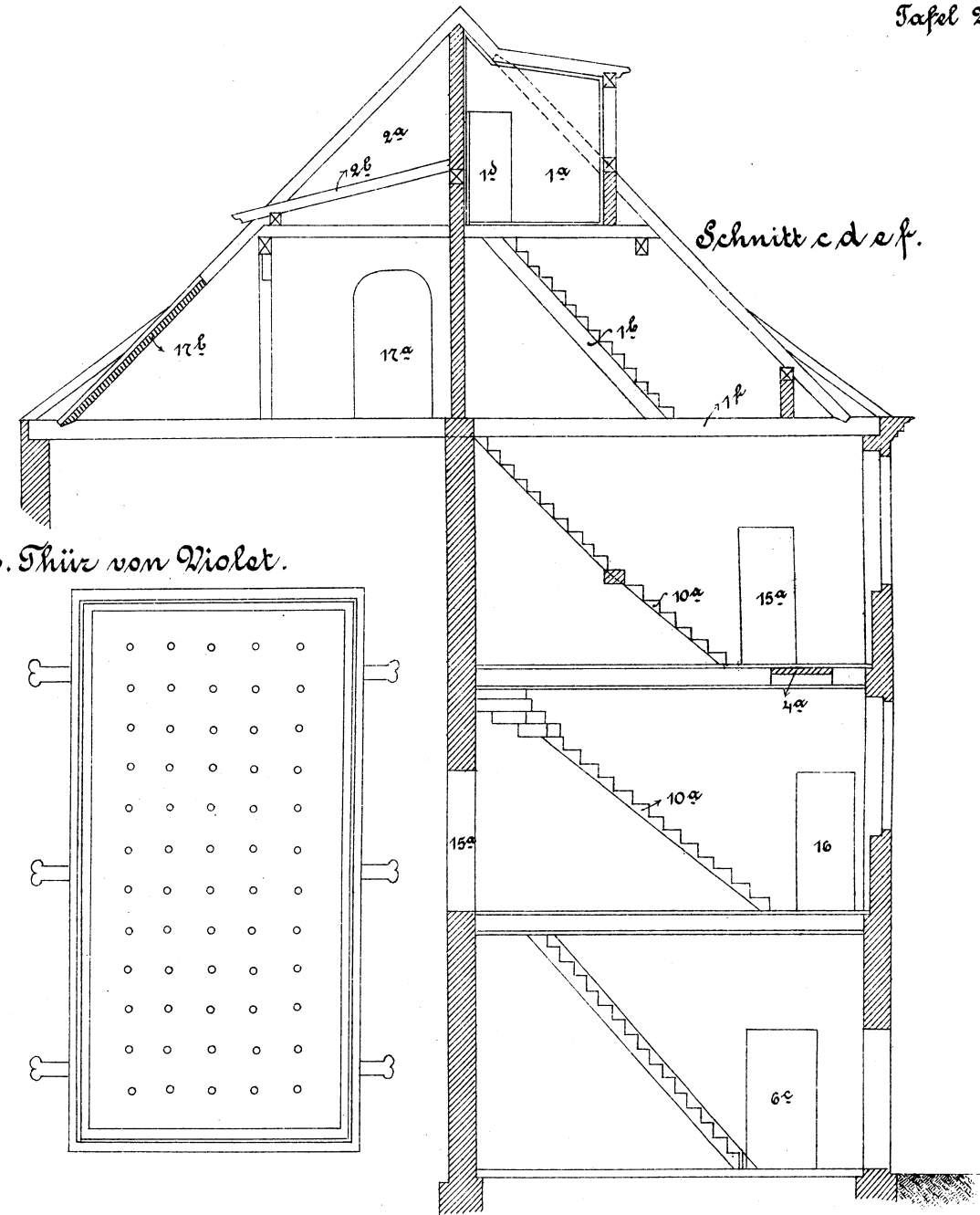
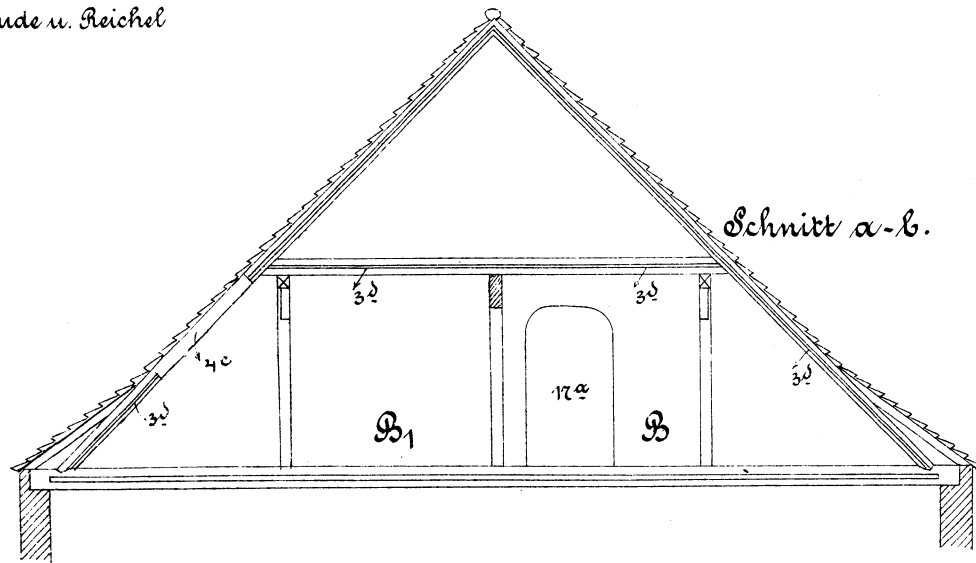


I. Stockwerk.

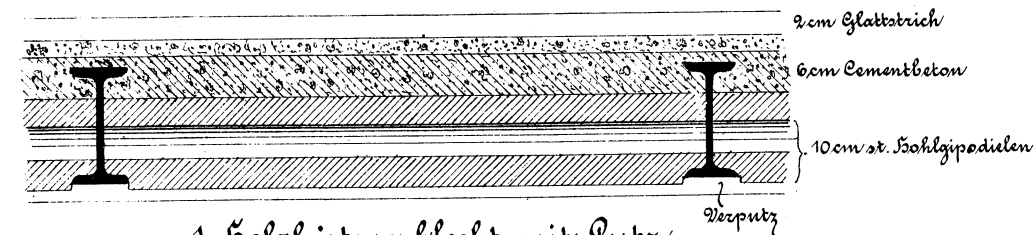
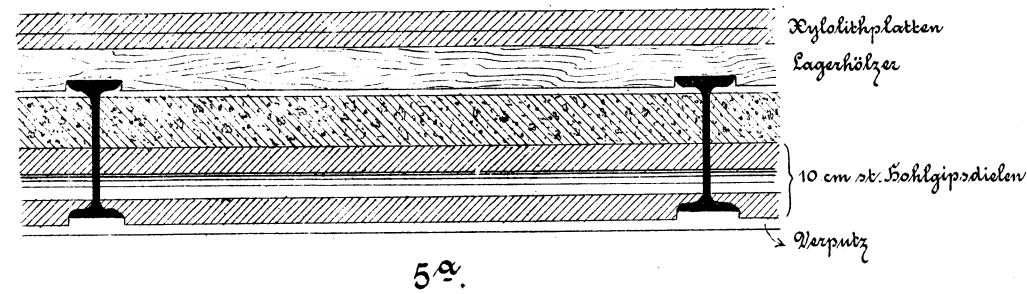
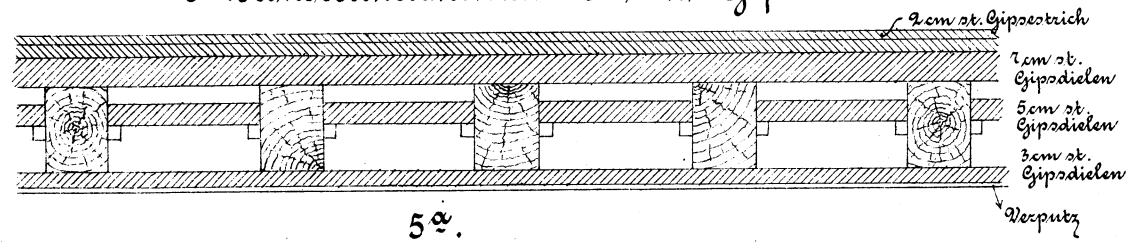


Dachgeschoss.

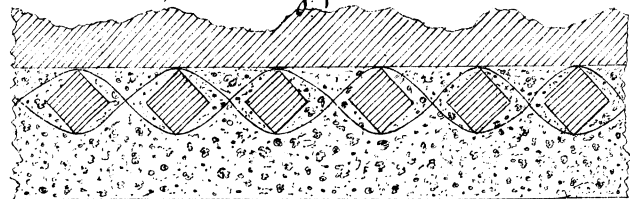




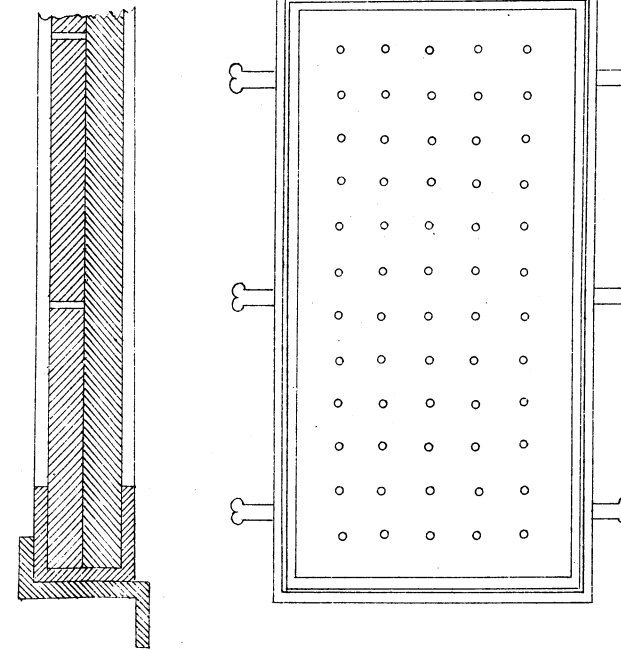
5^b. Konstruktionen aus Mack's Gipsdielen.



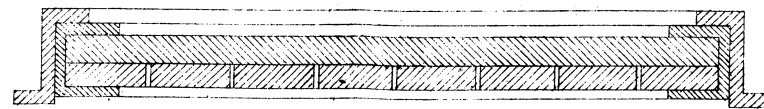
1. Holzleistengeflecht mit Putz.



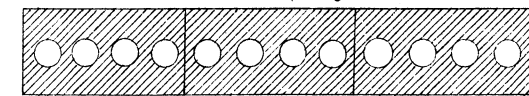
16. Thür von Violet.



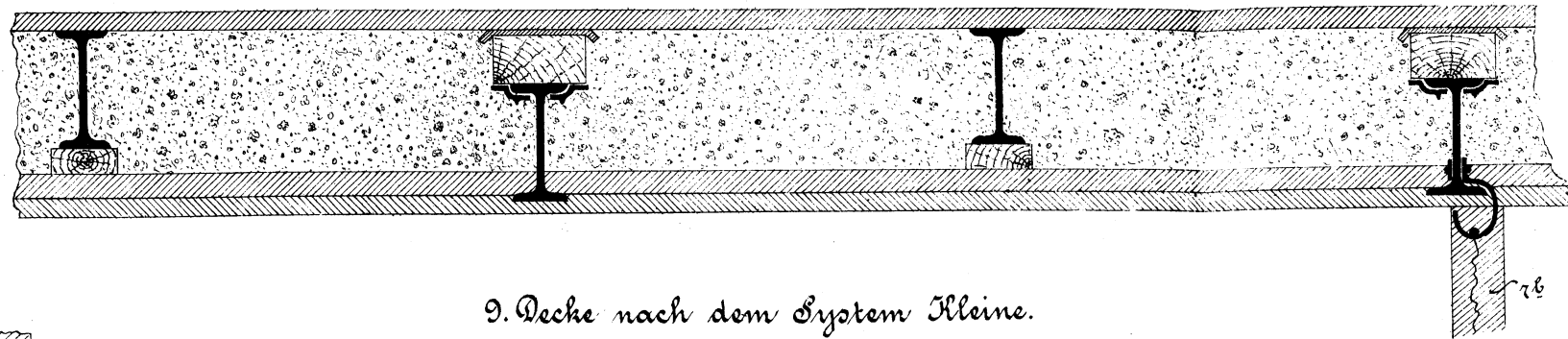
16. Schnitt durch die Thür von Violet.



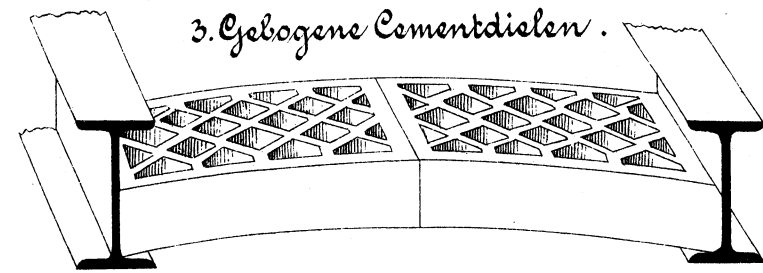
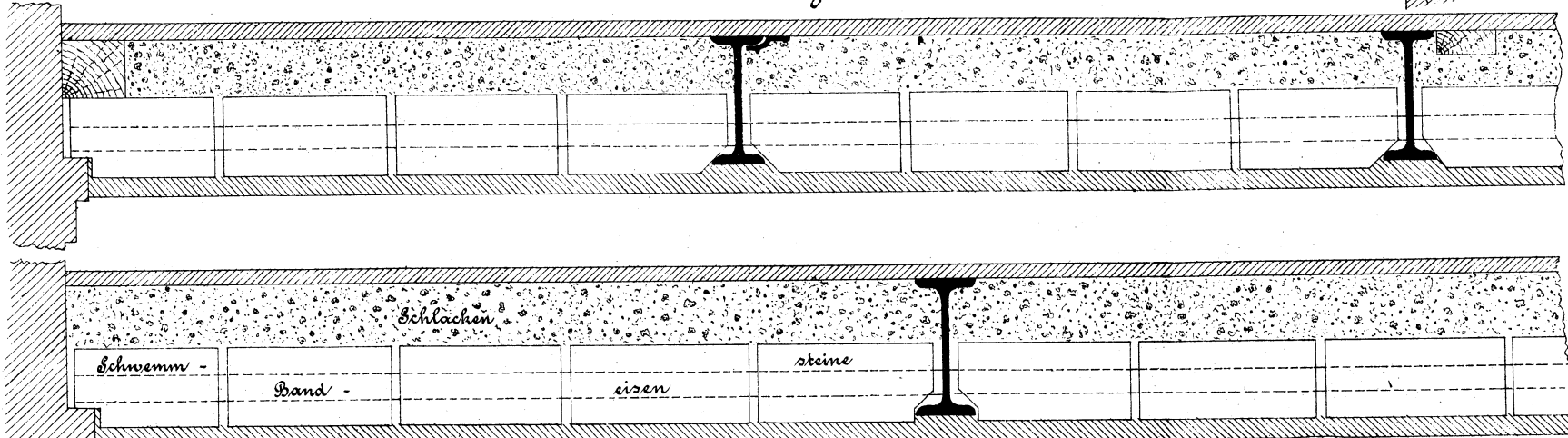
5. Mack's Hohlgipsdielen.



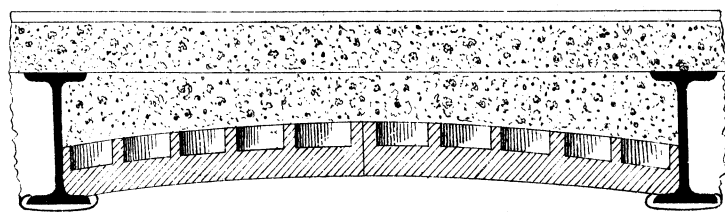
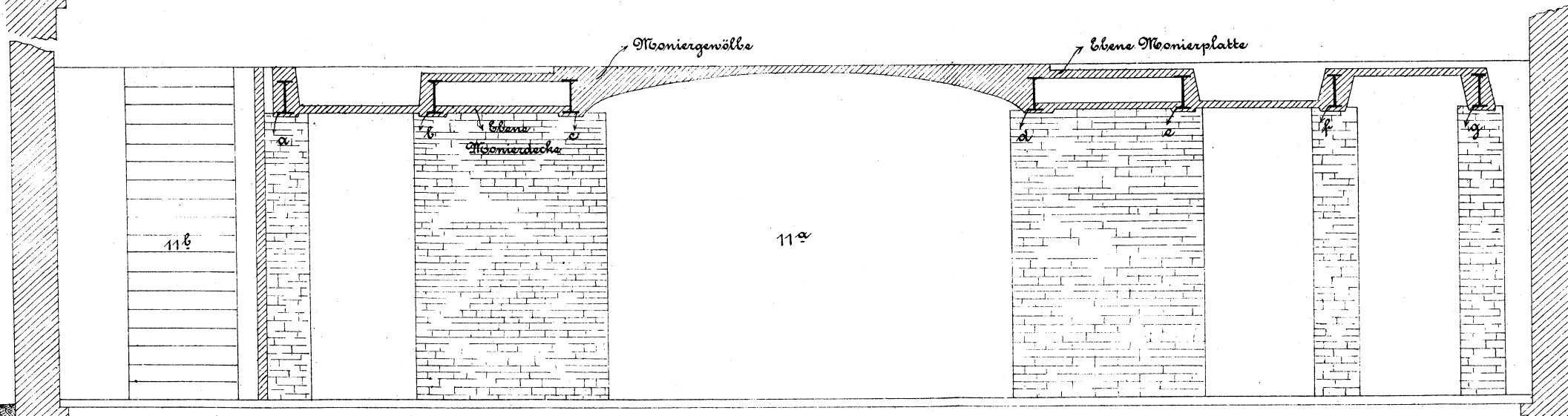
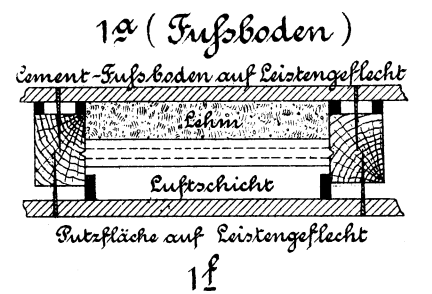
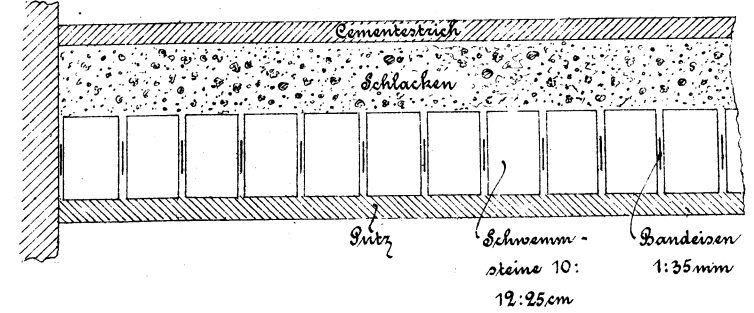
7. Deckenkonstruktion nach dem Isothermal-System.



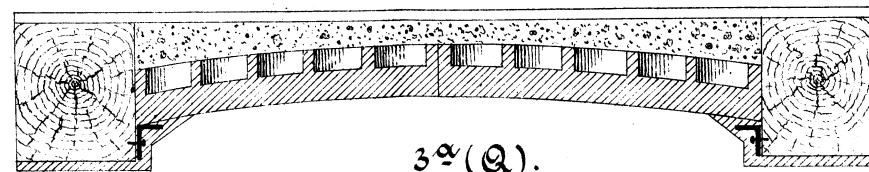
9. Decke nach dem System Kleine.



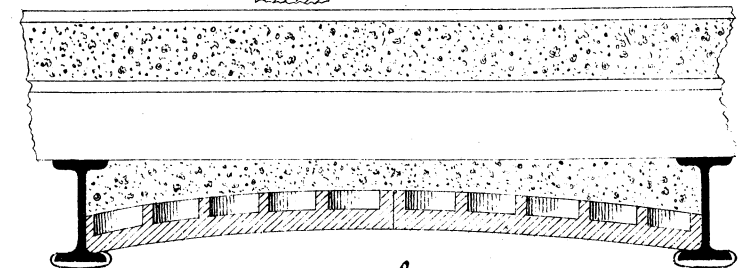
9. Decke nach dem System Kleine.



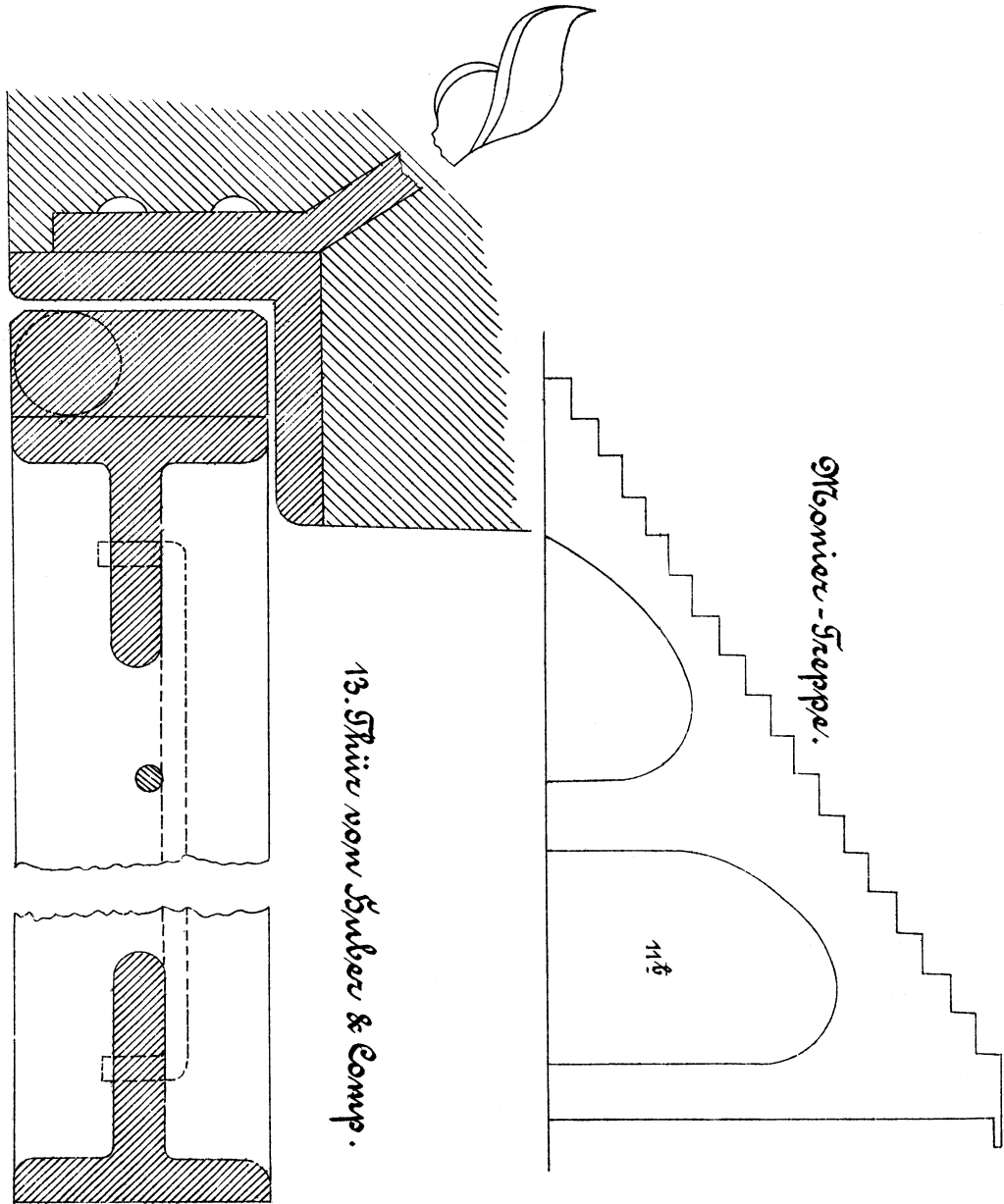
3^a(Q₁).



3^a(Q).



3^b(K₁).



13. Thür vom Bühler & Comp.