
2

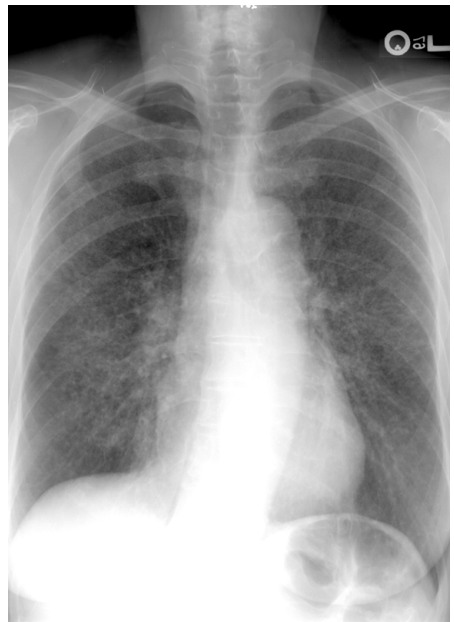
Chest Radiology

Includes plain film diagnosis, CT, MRI, and interventional techniques used in the diagnosis of diseases of the lungs, pleura, and mediastinum including the heart and great vessels.

LYMPHANGITIC CARCINOMATOSIS

“CERTAIN CANCERS SPREAD BY PLUGGING THE LYMPHATICS”

Cervix
Colon
Stomach
Breast
Pancreas
Thyroid
Larynx

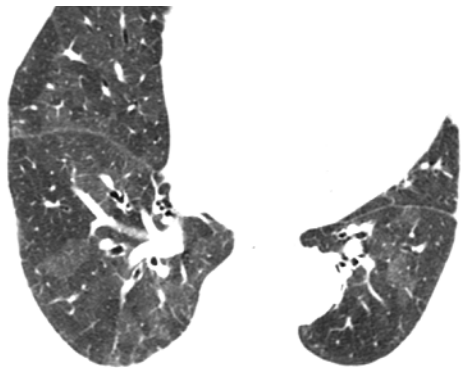
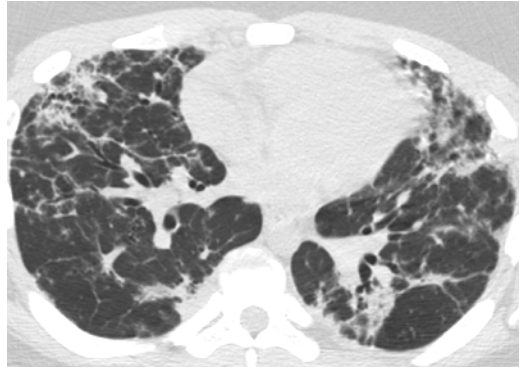


From: *Radiology: The Oral Boards Primer*
By: A. Mehta and D. P. Beall © Humana Press Inc., Totowa, NJ

BRONCHIOLITIS OBLITERANS

CRITTERS

COP/BOOP
 Rheumatoid
 Infectious-Swyer James
 Transplant
 Toxins
 Sarcoid



MULTIPLE NODULES OR MASS >3 CM

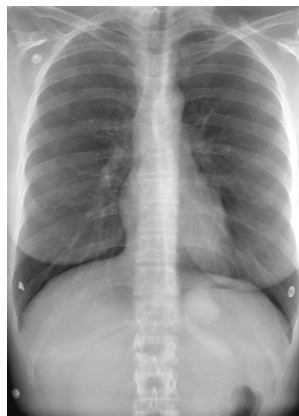
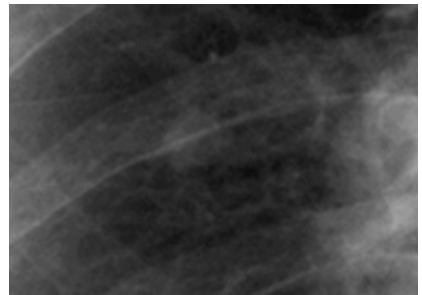
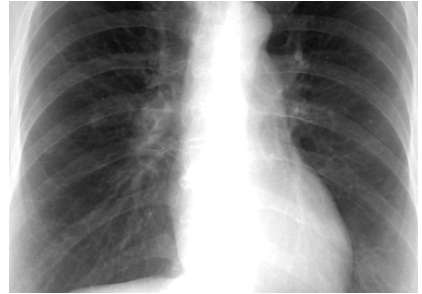
DAYS OF THE WEEK: MTWTFSS

Mets/Carcinoma/Lymphoma
 TB/granuloma
 Wegeners
 Rheumatoid nodules/Round pneumonia
 Fungal
 Sarcoid
 Septic pulmonary emboli



COIN LESION <3 CM**CHANGE**

Carcinoma/Congenital
Hamartoma/Hematoma
AVM/Abscess
Neoplasm–mets
Granuoma
Esoteric-TB pneumonia



A CT scan should be done to assess:*Ca²⁺ pattern*

Benign: solid, lamellated, central

Malignant: stippled, any other pattern.

Density: fat - Hamartoma

Margins:

Spiculated suggestive of carcinoma

Enhancement

Four 1-min images >15HU suggestive

*Growth***CAVITY****CAVITY**

Carcinoma-SCC

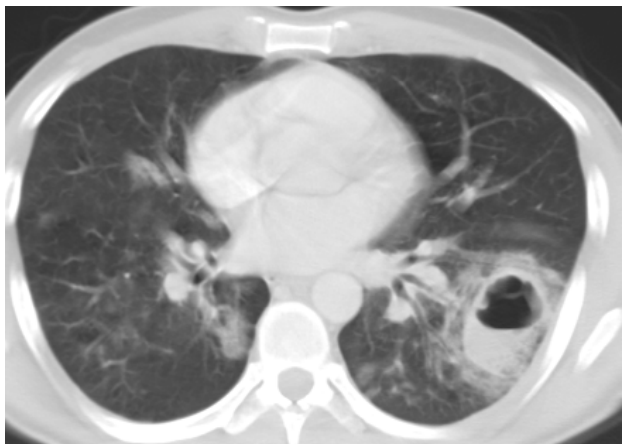
Abscess-fungal/bacterial/TB

Vascular-septic emboli

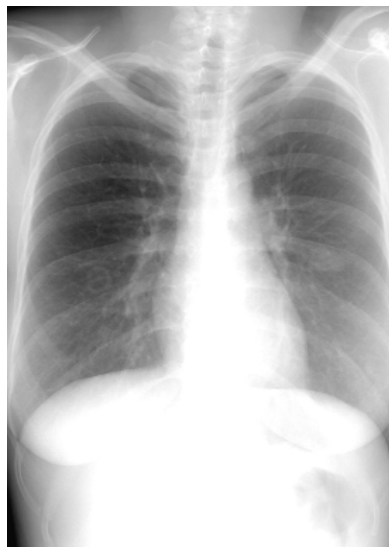
Inflammatory-rheumatoid nodule

Trauma-resolving contusion

Young-bronchogenic cyst



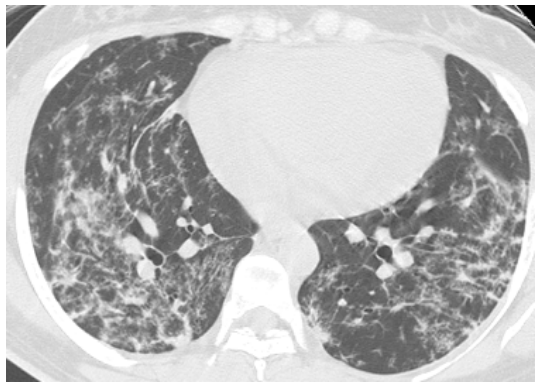
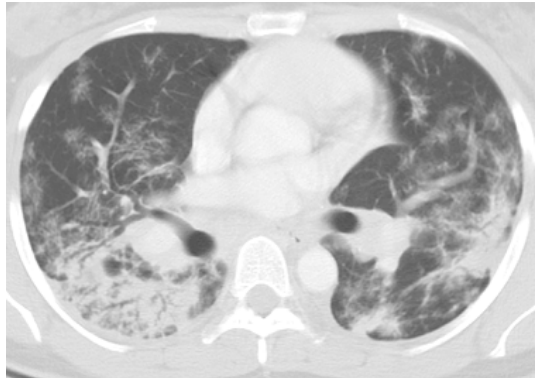
CAVITY (*continued*)



BRONCHOVASCULAR SPREAD

SKILL

Sarcoid
Kaposi
Infection–PCP/TB
Lymphoma
Lymphagitic spread



UNILATERAL HYPERLUCENT LUNG

POEMS

Poland syndrome/Pneumothorax
Oligemia/Obstruction (PE)
Emphysema
Mastectomy
Swyer James



ACUTE INTERSTITIAL DISEASE (RETICULAR)

HELP

Hypersensitivity pneumonitis

Edema-Inhalation injuries

Lymphoproliferative

Pneumonia-atypicals, PCP



CHRONIC INTERSTITIAL DISEASE (RETICULAR)

PAGE CHUCK AT THE CIA RIGHT NOW, THERE'S DRUGS

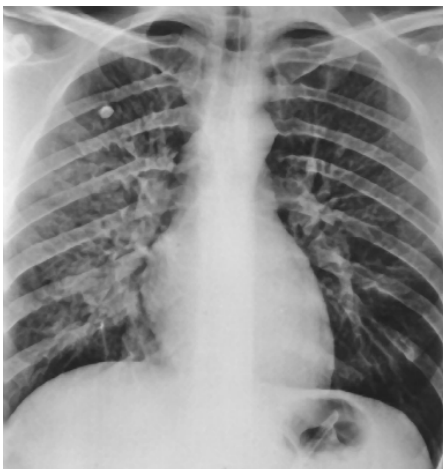
UPPER LUNG ZONES

Pneumoconiosis
Ankylosing spondylitis
Granulomatous
Eosinophillic
Sarcoid/Silicosis



MID LUNG ZONES

Chronic Hypersensitivity



LOWER LUNG ZONES

Collagen vascular disease

IPF

Asbestos

Rheumatoid

NF

Drug toxicity



ACUTE AIRSPACE DISEASE

HELP LEGALIZE HEMP

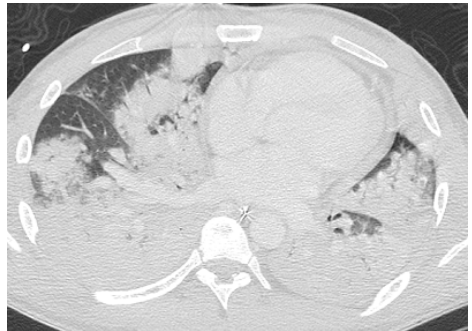
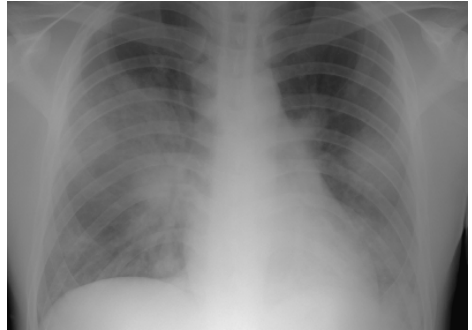
DIFFUSE

Hemorrhage

Edema

Lymphoproliferative—esoteric

Pneumonia



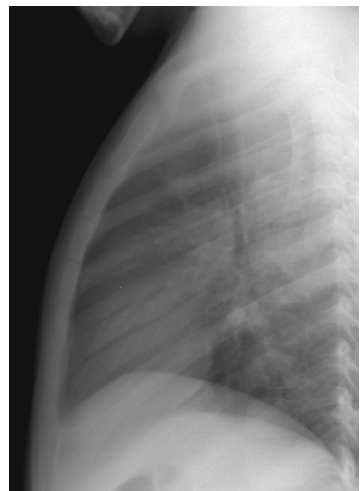
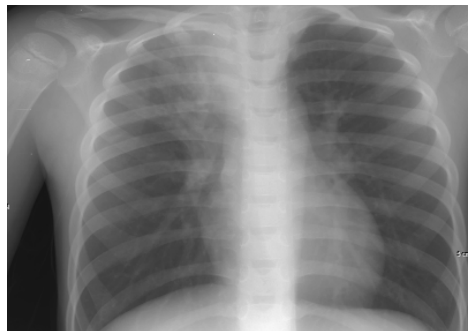
FOCAL

Hemorrhage-contusion/PE

Edema-inhalation (crack)

MI (RUL)

Pneumonia



CHRONIC AIRSPACE DISEASE

PEBBLES

PAP/PCP/Pedema

Eosinophilic pneumonia

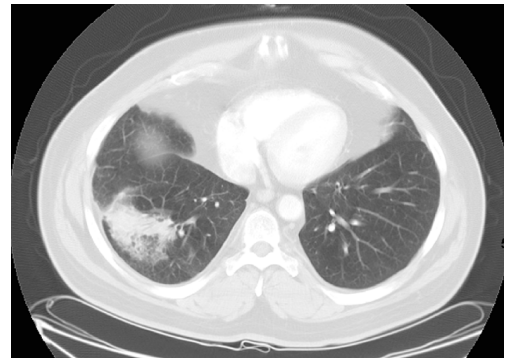
BAC

BOOP

Lymphoma

Esoteric-Wegener's/TB

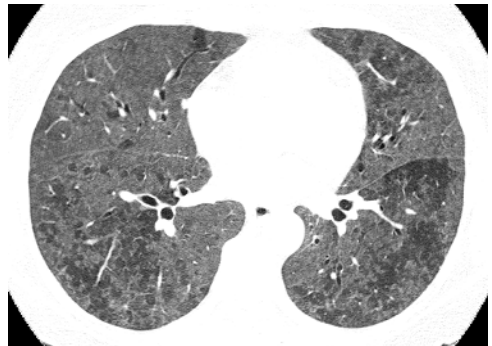
Sarcoid/Septic pulmonary emboli



GROUND GLASS DIFFUSE OPACITY

SHAKE YOUR HIPS IN BED

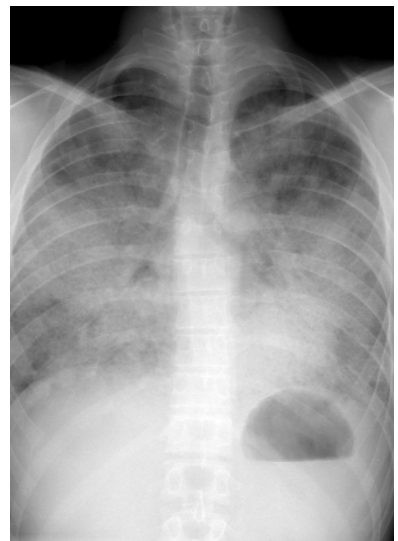
Sarcoid
Hypersensitivity—smokers
Infection
Pneumonitis—DIP
Scleroderma/CVD
BOOP
Edema/aspiration
Drug toxicity



CENTRAL OPACITIES EXTENDING FROM THE HILA OUTWARDS

PPPP

PAP
Pulmonary edema
PCP
Pneumonia—atypical/influenza



MIDDLE MEDIASTINAL MASS

HABIT

Hernia, Hematoma

Aneurysm

Bronchogenic cyst/duplication cyst

Inflammation (sarcoidosis, histoplasmosis, coccidioidomycosis, primary TB in children)

Tumors—remember the five Ls:

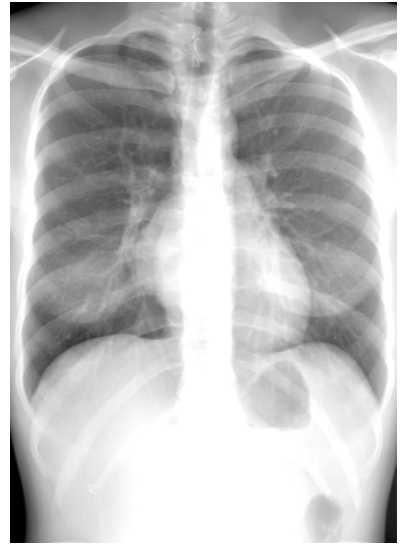
Lung, especially oat cell

Lymphoma

Leukemia

Leiomyoma

Lymph node hyperplasia



RETICULAR (CXR)/CYSTIC OPACITIES (CT)

ELECT CHIP

EG

LAM

Emphysema

CF

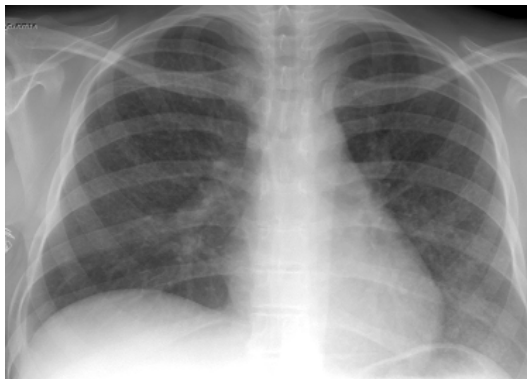
TS

Coccidiomycosis

Hydrocarbon

Infectious

PCP



FINGER IN GLOVE OPACITIES

CACACA

CF

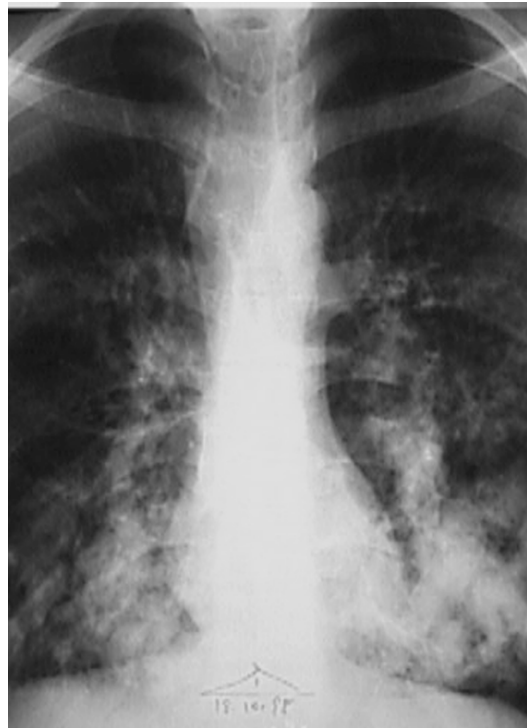
Asthma

Congenital bronchial atresia

ABPA

Cancer

AVM

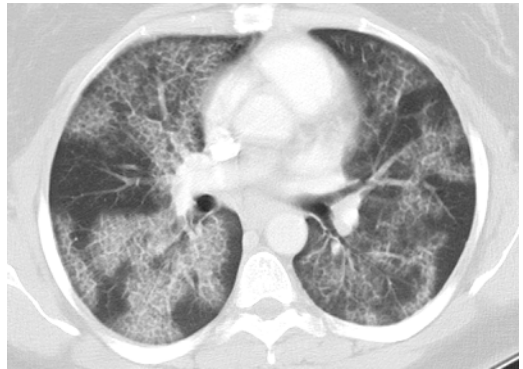
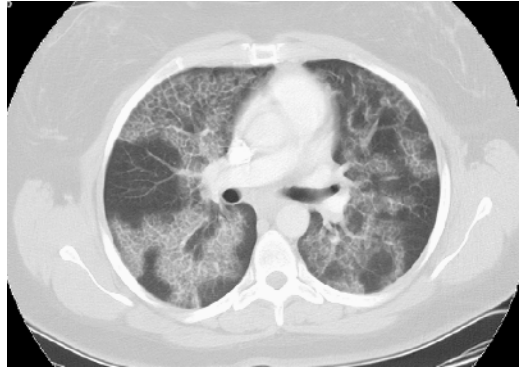


CRAZY PAVING (CT)**ACUTE**

Edema
Hemorrhage

CHRONIC

PAP
Sarcoid
PCP
Fibrosis



END-STAGE LUNG (CXR)— ARCHITECTURAL DESTRUCTION

TESSA

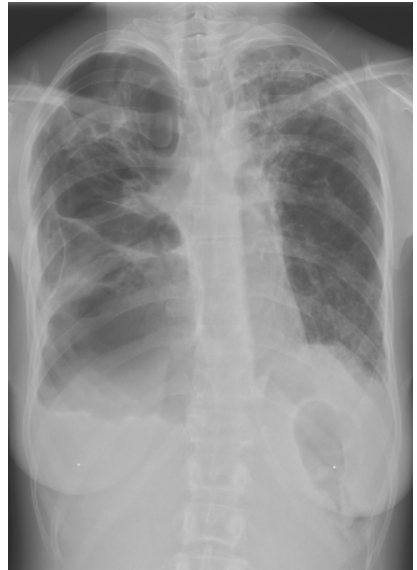
TB

EG

Sarcoid

Silicosis

ARDS—The sequela of



CA²⁺ NODULES

MASH POX

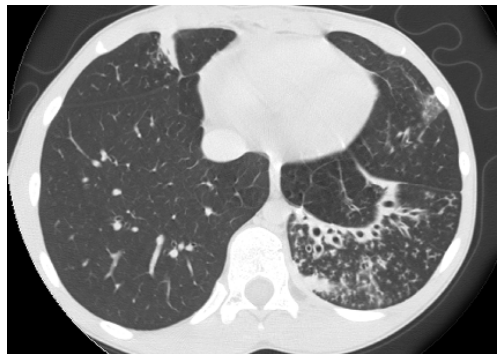
Metastatic disease
Alveolar microlithiasis
Silicosis/siderosis
Histoplasmosis
Pox (Varicella)



TREE IN BUD OPACITIES (CT)

MIT

Mucous plugging: Aspiration/Kartagener's
Inflammatory plugging (PUS): TB/MAI
Tumor emboli (rare)

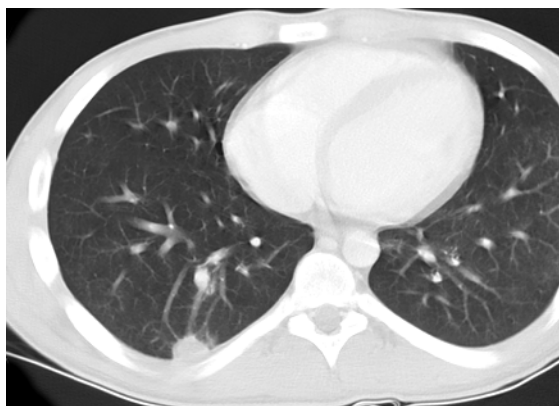
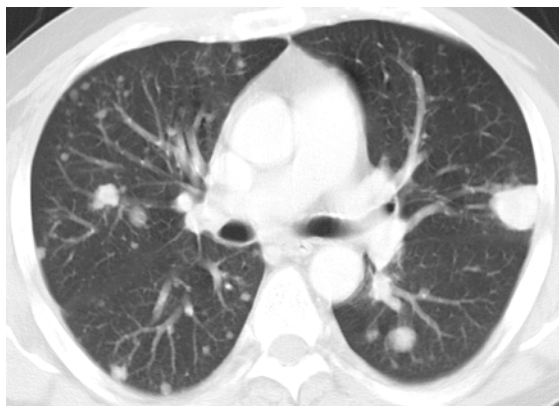


NODULES (CT)

DIFFUSE

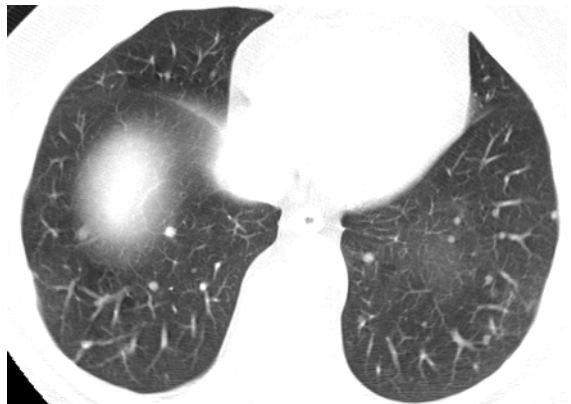
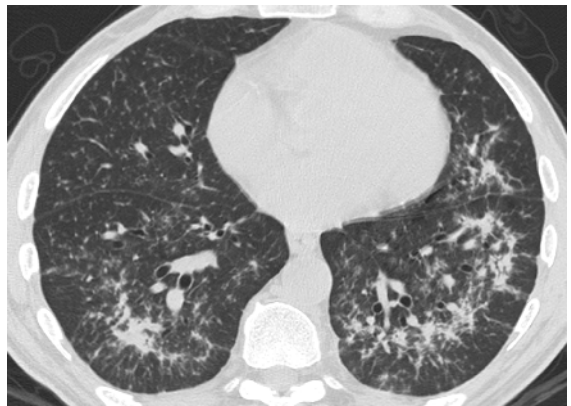
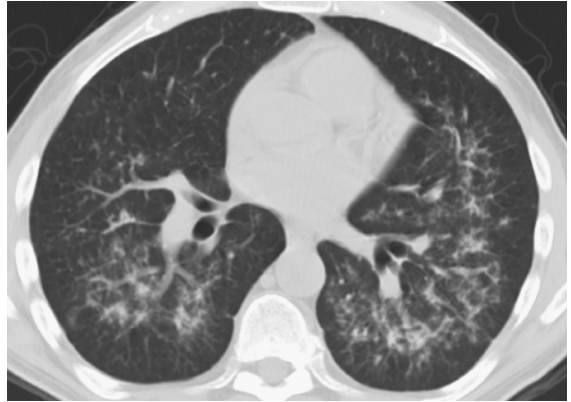
MISSLE

Mets
Infection
Sarcoid
Silicosis
Lymphoma
EG



PERILYMPHATIC**A SKILL**

Amyloid
Sarcoid
Kaposi's
Infection (PCP)
Lymphoma
Lymphang carcinomatosis



CENTRIOLOBULAR

HERB HAS GAS

Hypersen pneumonitis

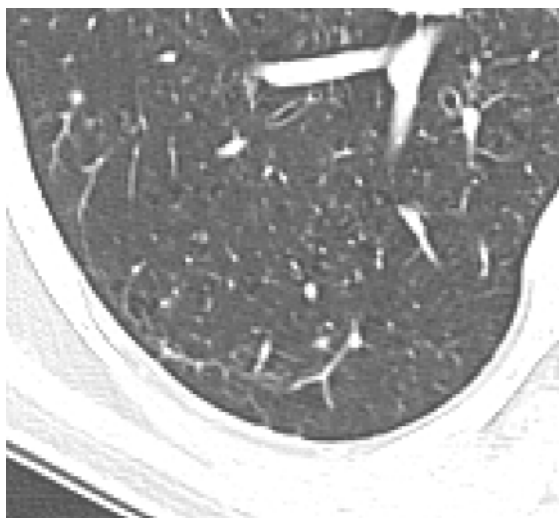
EG

RB-ILD

BAC/BOOP

GVHD

VASculitis



BRONCHIECTASIS

CAPT KANGAROO HAS MOUNIER KUHN

Cystic fibrosis

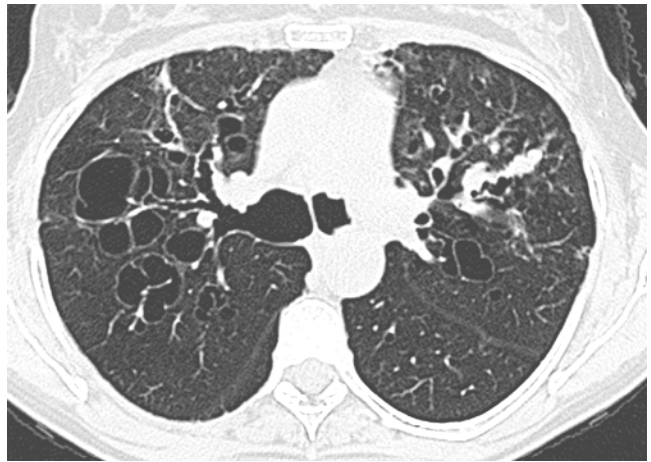
ABPA

Postinfectious

TB

Kartagener's

Mounier Kuhn



TRACHEAL NEOPLASMS

Multiple

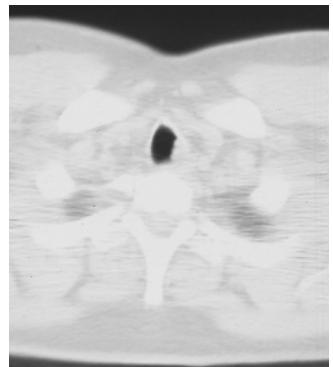
TRAM

Tracheobronchopathia
Relapsing polychondritis
Metsastasis

Single

MATCH

Mucoepidermoid
Adenoid cystic
Tracheal SCC
Carcinoid
Hamartoma



Cardiac

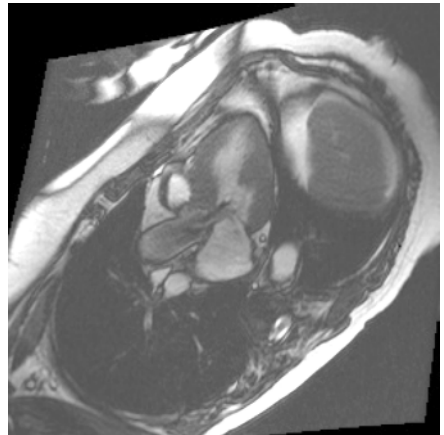
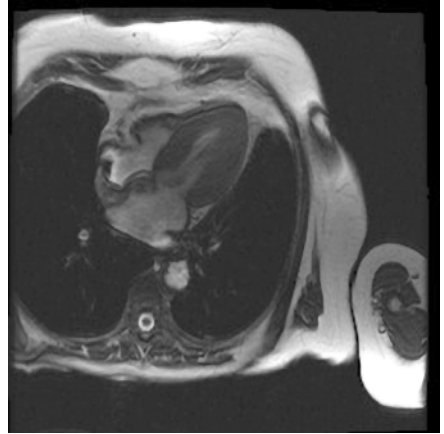
CARDIOMYOPATHY

RESTRICTIVE

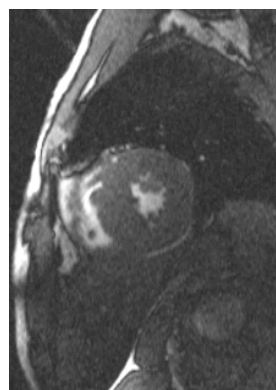
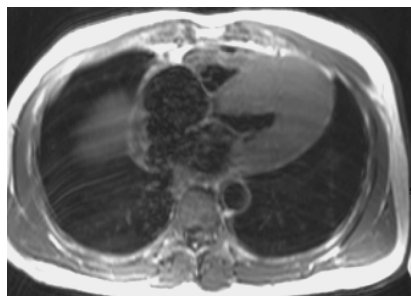
- Sarcoid
- Hemochromatosis
- Amyloid
- Endocardial fibroelastosis

HYPERTROPHIC

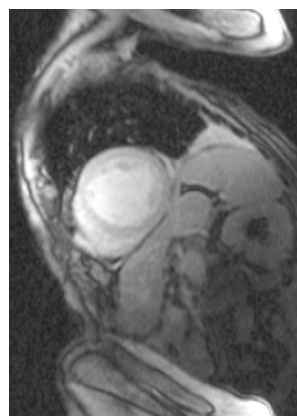
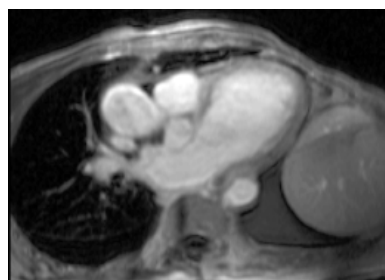
- Obstructive
- Nonobstructive



Dilated



PERICARDIUM



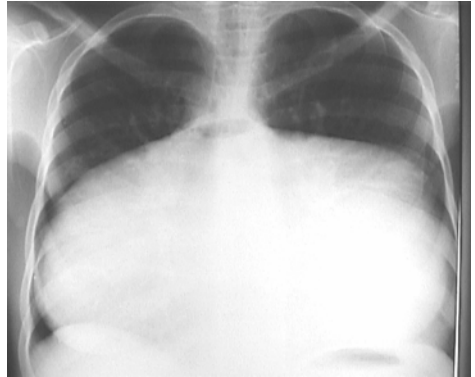
CA²⁺

Uremic

Viral

TB

Prior hemorrhage





<http://www.springer.com/978-1-58829-357-2>

Radiology: The Oral Boards Primer

Mehta, A.; Beall, D.P. (Eds.)

2006, XIV, 399 p., Hardcover

ISBN: 978-1-58829-357-2

A product of Humana Press