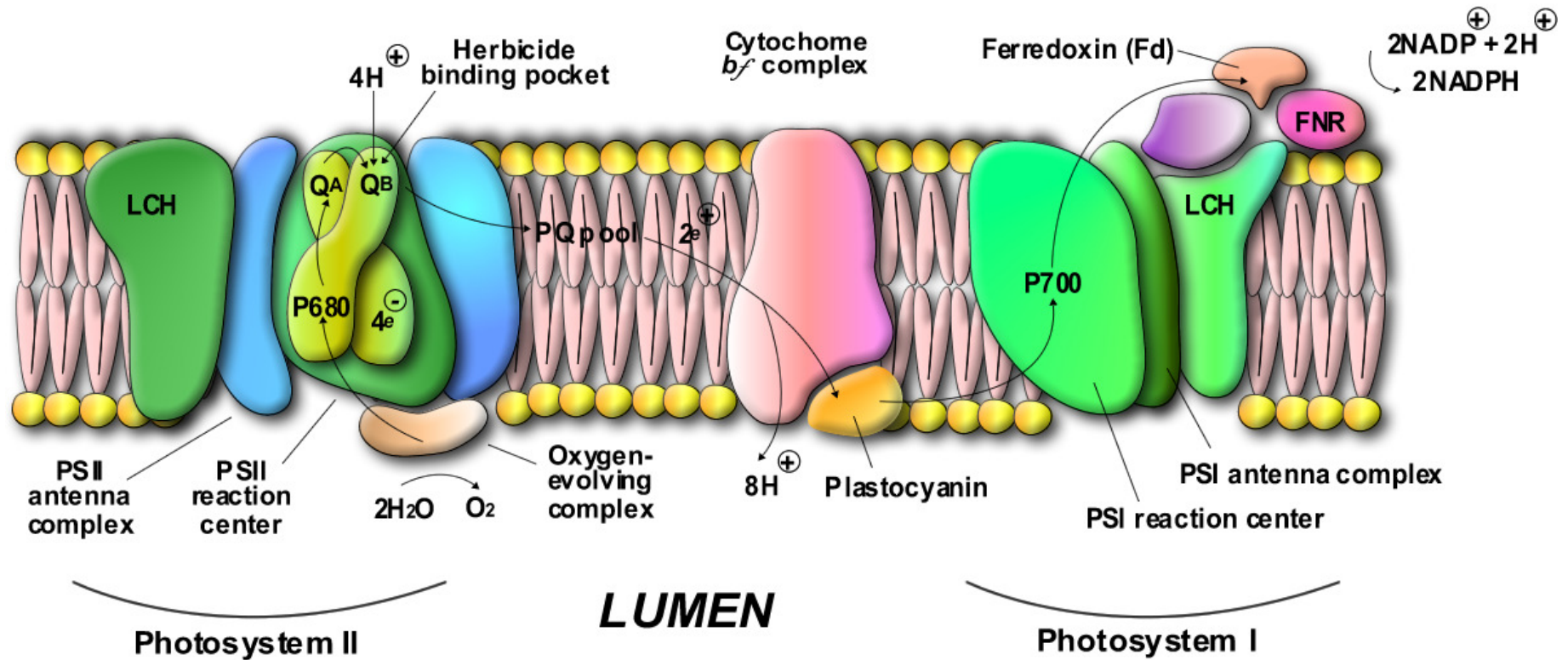


# STROMA



**Figure 9.** Representation of photosystems I and II (PSI and PSII) complexes, embedded in the thylakoid membranes of higher plants, algae, and cyanobacteria. Water oxidation to oxygen and NADP reduction to NADPH occur at separate sites, the PSII and PSI respectively. The electron flow is light-triggered at both sites, by excitation of P680 and P700. Electrons are carried from PSII to PSI by a pool of plastoquinones and plastocyanin. The herbicide-binding pocket is located at PSII.