

# Hold on at the Right Spot: Bioactive Surfaces for the Design of Live-Cell Micropatterns

S. Petersen, M. Gattermayer, and M. Biesalski

**Abstract** The merger of biology and modern microsystem technology bears challenges literally at the interface. Precise control of the interaction between an artificial surface and a biological environment is a prerequisite for a successful interplay of the “living world” with man-made technology. Any design of a chip for a spatially controlled attachment and outgrowth of living cells has to meet two fundamental yet apparently opposing requirements: it has to divide the surface into areas that favor cell adhesion and those that resist it. In the first part of this article, we provide a basis for an understanding of how to achieve both tasks by discussing basic considerations concerning cell adhesion to matrices in vivo and ways to control the interactions between biomacromolecules and surfaces. We also include an overview of current strategies for the integration of living cells on planar devices that aims to provide a starting point for the exploration of the emerging field of cell-chip technology.

**Keywords** Assay · Bioactive surface · Cell adhesion · Cell chip · Hydrogel · Microengineering · Micropattern · Peptide · Polymer brush · Protein adsorption

## Contents

1	Surface-Microengineering and Biology: A Challenge at the Interface .....	36
2	Lessons for Surface Design: Cell Adhesion in Nature.....	38
3	Surfaces that Resist the Adsorption of Proteins and Cells.....	40
3.1	Thermodynamics .....	40
3.2	Examples of Protein-Resistant Surface Coatings .....	43

---

S. Petersen, M. Gattermayer, and M. Biesalski (✉)  
Department of Chemistry, Technical University of Darmstadt, Petersenstraße 22,  
64287 Darmstadt, Germany  
e-mail: [petersen@cellulose.tu-darmstadt.de](mailto:petersen@cellulose.tu-darmstadt.de); [gattermayer@cellulose.tu-darmstadt.de](mailto:gattermayer@cellulose.tu-darmstadt.de);  
[biesalski@tu-darmstadt.de](mailto:biesalski@tu-darmstadt.de)

4	Directed Cell Adhesion to Engineered Surfaces .....	46
4.1	Protein-Decorated Surfaces for Spatially Guided Cell Adhesion .....	47
4.2	Peptide-Decorated Surfaces for Spatially Guided Cell Adhesion .....	56
5	Conclusions and Outlook .....	71
	References .....	71

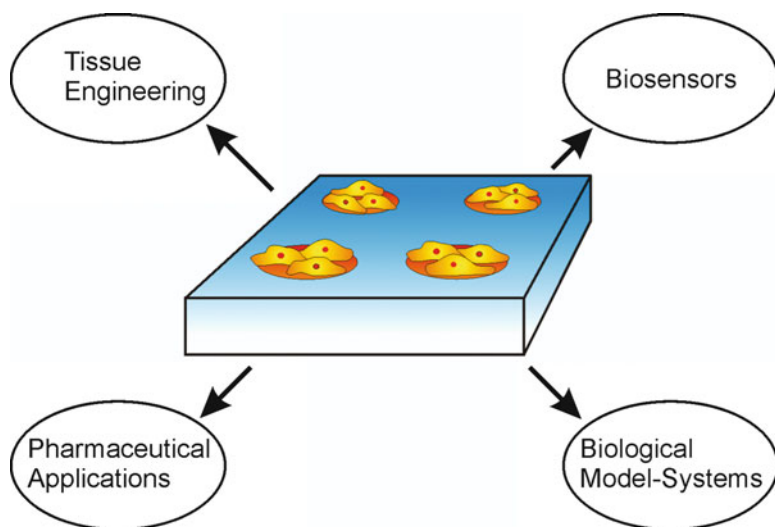
## 1 Surface-Microengineering and Biology: A Challenge at the Interface

The progress over the past decades in the field of surface science and the development of several microengineering techniques for the precise deposition, manipulation, and characterization of ultrathin films will open new avenues for the design of novel types of medical devices [1–6]. The new devices will, for example, monitor the health-status of a person for extended time-periods, detect critical metabolic situations such as unusually elevated or strongly reduced levels of blood sugar, or recognize an unexpected, serious immune reaction. Although the two research areas (biomedicine and surface-microengineering) involved in these developments, particularly in the tailoring of functional surfaces for specific needs, are both at present highly advanced, the merger of both brings great challenges literally at the interface.

In the field of medical diagnostics, surfaces are required that allow a specific interaction with a particular environment (e.g., an analyte) and meanwhile suppress unspecific reactions. A well-established implementation of this kind of a “smart” biomaterial is the development of DNA-analyzing chips (also known as DNA-chips) [7, 8]. This successful application of a biomedical microengineered system also involves an important concept in microengineering in general – miniaturization. The reduction of dimensions together with an increased sensitivity of the sensorial sites, mainly achieved through a tailor-made bioactive surface, leads to a parallelization of the analytic process that allows tremendous reductions in cost, time, and amount of analyte necessary. In a next step, biochips for the analysis of proteins are of utmost interest in medical diagnostics and therapy. In contrast to DNA analysis, where the “sensors” are single-stranded DNA fragments, the detection of proteins (e.g., disease markers) requires the immobilization of specific proteins (or parts of such proteins), such as antibodies, on the artificial surface [9, 10]. With respect to successful surface-immobilization, however, one has to deal with a number of hurdles when using proteins: they have a complex structure and, hence are highly sensitive to conformational changes (i.e., denaturation) that might be induced upon interaction with a surface. Denaturation (i.e., any change of the natural protein structure) can lead to a reduction or even loss of the functionality and, consequently, to an altered, often poor and nonreproducible performance of the device. Looking at the family of biofunctional analysis chips, one can state that DNA-chips are already well established on the market, with protein-chips starting to follow in their footprints. However, for biomedical diagnostics and research, it would be of great interest to

use even more complex systems as sensorial devices, i.e., living cells. The ability of living organisms (i.e., cells) to react to various environmental changes with a high specificity and sensitivity is as impressive as it is difficult to predict. Therefore, the search for substances that induce a certain (desired) cellular response either for medicinal purposes (drug-screening) or as coatings for medical implants (biocompatibility tests) is mainly done to date in extensive *in vitro* studies using cell culture assays. These assays require comparatively large volumes of the often very expensive substances to be tested. Here, the manipulation of living cells in microscale devices offers distinct advantages over conventional macroscale systems. Microscale devices have the ability to process small sample volumes rapidly and inexpensively, and thereby provide valuable information about important cell parameters such as gene expression and metabolic activity. Figure 1 hints at the vast potential a cell chip could offer to a number of biomedical research areas. Thus, an increasing amount of fundamental research in current bioengineering science is dedicated to the development of such cell chips.

Any successful attempt to create a cell chip has to meet important requirements with respect to the precise surface chemistry and physics that govern the interaction of the substrate with the living cells. Therefore, the quest for the development of a device for guided cell adhesion has to be preceded by a study of the environment of living cells *in vivo* in order to understand the mechanisms and surrounding circumstances of “normal” cell behavior. The key challenge in the development of such cell chips lies in the specific attachment of living cells in a spatially controlled manner. For this, a surface has to be designed that, on the one hand, prevents unspecific protein adsorption that can mediate cell adhesion and, on the other hand, simultaneously promotes specific cell attachment in a spatially resolved way.

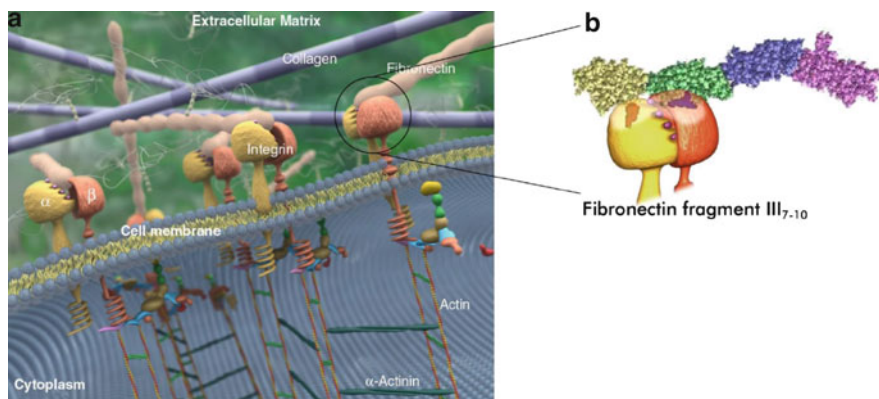


**Fig. 1** Biochip for locally controlled cell adhesion, and possible examples of application of such cell chips

In this review, we focus on novel developments in the design of surfaces that guide a locally controlled adhesion of living cells at desired surface areas. In order to present related work in the context of modern bioengineering, we first review how cells adhere to their neighboring environment in nature (Sect. 2). Then, we briefly discuss strategies for design of surfaces that resist nonspecific interactions with proteins (Sect. 3). In Sect. 4, we then review the current state-of-the-art in confining cells to distinct lateral spots on various artificial surfaces, including those surfaces where surface-adsorbed proteins are used to mediate cell-adhesion, as well as surfaces that have been designed to expose bioactive ligand-modules that promote the adhesion of living cells.

## 2 Lessons for Surface Design: Cell Adhesion in Nature

Our understanding of the molecular mechanisms that underlie the adhesion of living cells in nature has improved tremendously over the past decades. Cell–cell adhesion, as well as the adhesion of living cells to an extracellular matrix (ECM), is governed by specific interactions between distinct “cell adhesion molecules” (CAMs) localized in the plasma membrane as transmembrane proteins (i.e., receptors) and their specific ligands in the ECM. Different major classes of such receptors have been identified [9, 11, 12]. Immunoglobulins and cadherins interact with their counterparts located in a neighboring cell membrane, and thus form cell–cell contacts. Selectins bind to glycosylated mucins, and vice versa, as well as to distinct growth factors. Finally, integrins comprise an important class of CAMs that mainly bind to ECM proteins and also interact with immunoglobulins (Fig. 2).



**Fig. 2** (a) The cell-membrane–ECM interface. Transmembrane integrins are composed of two subunits,  $\alpha$  and  $\beta$ , which anchor the cell to ECM molecules, e.g., fibronectin. The extracellular binding of the integrins triggers the intercellular formation of the cytoskeleton through a highly organized aggregate of proteins, such as actin filaments and others. (b) Specific binding of integrins to recognition sites in the ECM proteins, here to fibronectin. (Figure reproduced in part with permission from [132])

Integrins consist of two noncovalently linked subunits ( $\alpha$ - and  $\beta$ -subunits), i.e., they comprise a heterodimeric structure [13–15]. There are more than 20 different integrins known to date [12]. Most integrins are expressed on a variety of cells, and most cells express several different integrins, enabling them to bind to various matrix molecules. The most important of these matrix molecules are ECM proteins such as fibronectin, collagens, laminin, and vitronectin. The cell–ECM adhesion comprises a cascade of different, mainly consecutively occurring events, and is initiated by the interaction of the integrin receptors with small ligands (peptides) present in ECM proteins [12]. Once the ligand interacts with its specific receptor, the cell begins to flatten (i.e., it “spreads”) on the interface. The chemical information is “transmitted” into the cell by conformational rearrangements of the receptor at the cytosolic side, where it triggers the further organization of actin filaments, which are often called “stress fibers.” Finally, integrin molecules that are attached to both the peptide ligand outside of the cell and to the cytoskeleton inside (stress fibers and a number of other cell proteins, such as focal adhesion kinase, vinculin, talin, and tensin) cluster together in the plasma membrane, thereby forming “focal adhesion contacts” [16–19]. At first view, this scenario seems to be simple; however, it is important to note that from a molecular view, many different steps of the above-described cascade are not yet understood in detail. In addition, it is important to recognize that the interaction of the peptide ligands with integrins not only ensures the structural integrity of living cells, but also triggers a number of different events inside the cell that finally influence the metabolism, differentiation, and proliferation of the cell. The interaction also impacts the systemic responses of the immune system, and is involved in wound-healing cascades [20, 21].

A biomedical device that aims to provoke a normal cell behavior *in vitro* needs to “mimic” the ECM in a way that allows the initiation of the cell adhesion process. In principle, one can either modify a surface with ECM proteins that mediate the attachment of living cells, or one can engineer cell-adhesion-mediating small ligands into/onto appropriate surfaces. A well-known ligand is the minimal cell-recognition peptide sequence RGD (R = arginine, G = glycine, and D = aspartic acid) [22–27], which is found in many different ECM proteins. Although the RGD motif is by far not the only recognition sequence known today, it is of special interest due to its broad distribution and variability. The affinity to different integrins is mainly governed by its flanking amino acids, and a number of oligopeptides that include the RGD sequence have been identified as binding to specific members of the integrin family. For a more detailed overview on different bioactive peptide sequences that interact with various CAMs, the reader is referred to two excellent review articles [28, 29].

Note that the above-mentioned, rather simplified set of characteristics for a biomimetic strategy of “guided cell adhesion” were first developed for planar surfaces. For many cell-types, this accounts for an interesting model system with a sufficient relevance to the biological situation; however, there also exist a number of cell types that might behave differently with respect to surface attachment, growth,

and differentiation if cultured in 2D (as opposed to the 3D biological environment) [30]. However, 3D artificial model systems are much more sophisticated with respect to matrix preparation, as well as peptide–ligand (or protein–ligand) presentation, and therefore studies using such systems are so far very rare. Thus, we restrict further discussions exclusively to planar surfaces.

### 3 Surfaces that Resist the Adsorption of Proteins and Cells

Throughout the last few decades, a number of interesting strategies have evolved that address the construction of both surfaces that resist the adsorption of proteins as well as surfaces that promote protein adsorption, and hence are either capable of suppressing or supporting protein-mediated cell adhesion. Protein adsorption is a crucial issue in the design and performance of materials in contact with living cells. And, perhaps, it is the surface chemistry and physics that govern any successful attempt to design a material that directs the controlled attachment and growth of cells, rather than the bulk properties of the material itself. Both, surfaces that allow the adsorption of proteins and surfaces that repel proteins are of the utmost interest for guiding cells, particularly if a spatially controlled attachment of cells is targeted, where these two properties have to be implemented onto the same substrate.

We will briefly outline the principle thermodynamic considerations that comprise the underlying key issues of protein adsorption on surfaces. Subsequently, we will describe strategies that have been followed for the design of protein-repellent surface coatings. For details on protein adsorption, as well as further discussion on this particular topic, the reader is referred to more comprehensive reviews [31, 32].

#### 3.1 Thermodynamics

From a thermodynamic point of view, protein adsorption at a surface depends on the Gibb's free energy of adsorption ( $\Delta G_{\text{ads}}$ ):

$$\Delta G_{\text{ads}} = \Delta H_{\text{ads}} - T\Delta S_{\text{ads}}.$$

Here  $\Delta H_{\text{ads}}$  is the enthalpy of adsorption,  $T$  is the temperature, and  $\Delta S_{\text{ads}}$  is the entropy change associated with the adsorption of the protein onto the surface. Protein adsorption will take place if  $\Delta G_{\text{ads}} < 0$ . Considering a complex system, where proteins are dissolved in an aqueous environment, and are brought into contact with an artificial interface, there are a vast number of parameters that impact  $\Delta G_{\text{ads}}$ : due to their small size (i.e., large diffusion coefficient), water molecules are the first to reach the surface when a solid substrate is placed in an aqueous biological environment. Hence, a hydrate layer is formed. With some delay, proteins diffuse to the interface and competition for a suitable spot for adsorption starts. This competition

**Table 1** Phenomena occurring during protein adsorption and their influence on Gibb's free energy of adsorption

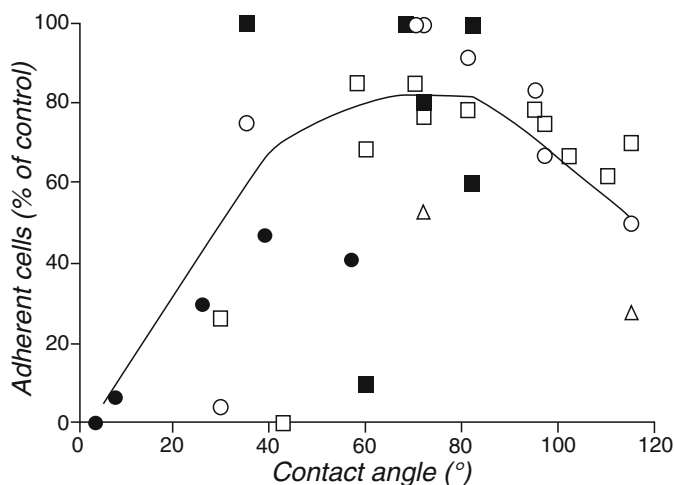
Interaction	Influence on $\Delta H_{\text{ads}}$	Influence on $\Delta S_{\text{ads}}$	Influence on $\Delta G_{\text{ads}}$
Ionic	$\Delta H_{\text{ads}} < 0$		$\Delta G_{\text{ads}} < 0$
surfacedehydration	$\Delta H_{\text{ads}} > 0$	$\Delta S_{\text{ads}} > 0$	$\Delta G_{\text{ads}}$ depends
Protein denaturation	$\Delta H_{\text{ads}} > 0$	$\Delta S_{\text{ads}} < 0$	$\Delta G_{\text{ads}} > 0$
Surface-layer compression	$\Delta H_{\text{ads}} > 0$	$\Delta S_{\text{ads}} < 0$	$\Delta G_{\text{ads}} > 0$
Osmotic repulsion		$\Delta S_{\text{ads}} < 0$	$\Delta G_{\text{ads}} > 0$

$\Delta H_{\text{ads}}$  enthalpy of adsorption,  $\Delta S_{\text{ads}}$  entropy change associated with the adsorption of the protein onto the surface,  $\Delta G_{\text{ads}}$  Gibbs free energy of adsorption

is mainly governed by the surface properties of the material that influence the rate, amount, and conformation of the adsorbed molecules. The surface charge, the degree of swelling in water (if a water-swellable surface coating is considered), as well as the surface energy of the material are thus important parameters, which influence the kind and strength of interaction of proteins with the substrate. Table 1 summarizes phenomena accompanying protein absorption as well as their influence on the Gibb's free energy.

Considering the polarity of a surface, water molecules will arrange themselves on hydrophobic surfaces in a highly ordered fashion, which decreases the overall entropy of the system (i.e.,  $\Delta S > 0$ ). Adsorption of a protein replaces parts of the ordered water layer at the surface and thus can increase the entropy of the system. Because proteins carry both, hydrophobic as well as hydrophilic chemical groups, adsorption itself relies on the free energy change of the protein molecule during the surface attachment. If the loss in conformational entropy of the protein molecule due to fixation of some parts of it at the surface is compensated by the gain in enthalpy due to the interaction of distinct chemical groups with the hydrophobic surface, adsorption will occur. Proteins will thus mainly attach to hydrophobic interfaces via interactions between hydrophobic residues present in a number of different amino acids and the respective surface chemical groups. The complex structure of soluble proteins can be taken in a very simplified fashion as a "core-shell"-like object, i.e., hydrophobic parts are arranged "inside" the protein, and are covered by more hydrophilic modules that form a soft shell surrounding the hydrophobic core. If such proteins adsorb to a hydrophobic surface, the core of the protein has to turn towards the substrate. Simultaneously, the hydrophilic parts of proteins turn towards the aqueous environment upon adsorption. By this mechanism, the surface energy of the substrate may be significantly decreased. The process is often accompanied by a restructuring of the protein molecule. This "denaturation," which is entropically unfavorable for the protein, is compensated by the gain of entropy of the system due to the release of the water molecules from the surface, as well as the gain in enthalpy of the protein molecule.

In contrast, protein adsorption to hydrophilic surfaces might be even more complex, and is still not completely understood. As will be shown, there exist a number of examples in which hydrophilic surfaces indeed successfully repel proteins; however, there also exist interesting examples in which attractive interactions between



**Fig. 3** Relationship between cell adhesion and water–air contact angle for a variety of polymer surfaces. The data have been collected and plotted by Saltzman, and are summarized in a book by Lanza et al. (Figure reproduced, with permission, from [33])

a strongly hydrophilic surface and proteins in solution can lead to an attachment of the protein to the substrate. In a textbook by Lanza et al. [33], cell adhesion on various polymeric substrates is discussed in the context of surface polarity, as measured by the water–air contact angle. Figure 3 shows the amount of adherent cells as a function of the water contact angle for various polymeric surfaces. The data were collected by Saltzman, and the reader is referred to the literature for details of the polymeric substrates studied [33]. Saltzman claims that surfaces with more hydrophobic properties (i.e., water contact angles greater than  $60^\circ$ ) will probably promote protein adsorption, and thus support protein-mediated cell adhesion. However, the guide to the eye, present as a solid line in the figure, is still questionable because the data scattering is tremendous. In our opinion, water contact angle measurements should not be taken as a measure for protein-repellent surface properties. Despite the surface polarity, protein adsorption will also be largely affected by further parameters such as surface charge, surface elasticity, and the morphological composition of the surface.

Surface charge has been observed to impact protein adsorption significantly. The net charge of most proteins is negative and adsorption to positively charged surfaces can take place, e.g., by electrostatic, attractive interactions [34]. Negatively charged surfaces can still be subject to protein adsorption when a layer of counterions reverses the effective surface charge. The attraction for protein adsorption is furthermore influenced significantly by the degree of swelling of the surface-confined layers or bulk material in water. Considering a surface layer such as surface-confined hydrophilic polymer films, which are capable of swelling in an aqueous environment, any adsorption of protein molecules leads to a compression

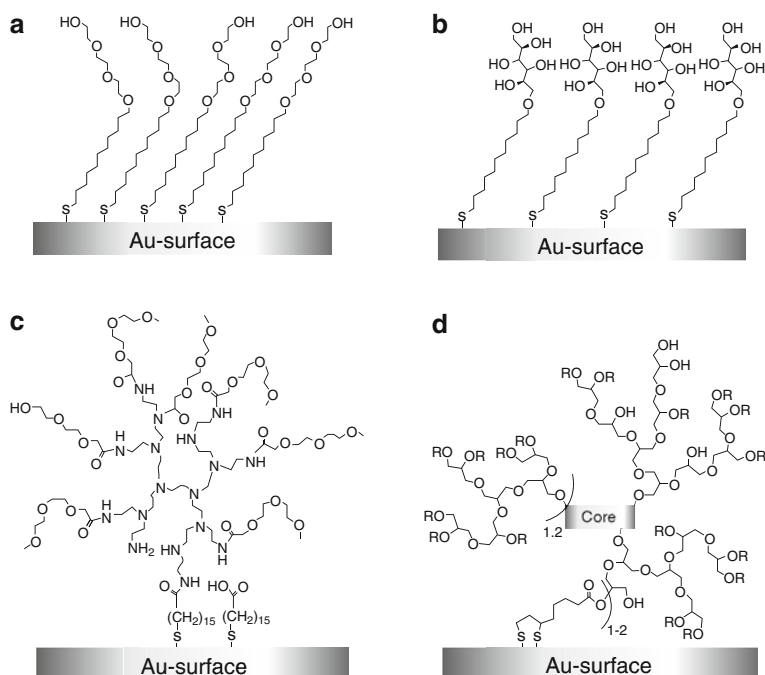


of the surface layer. The latter is always accompanied by a reduction of the conformational entropy of the surface-attached molecules due to the loss in the degree of conformational freedom and, as a result, elastic forces (i.e., excluded volume effects) will act against this compression. As a result, proteins will be pushed away from the surface, rendering water-swellaible surface layers interesting candidates for the implementation of protein-repellent properties.

Following the above-outlined phenomenological considerations, scientists have studied various surfaces with respect to protein adsorption, and a number of different surface chemistries have been successfully applied to the design of surfaces that resist the adsorption of proteins.

### ***3.2 Examples of Protein-Resistant Surface Coatings***

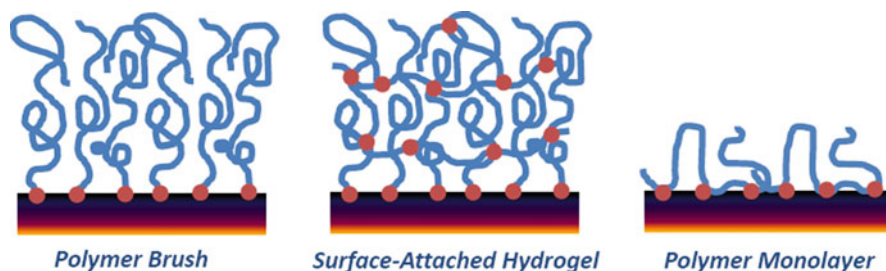
Materials that have been used as surface-coatings for the design of protein-resistant surfaces include natural polymers such as heparin [35] or dextran [36] as well as synthetic polymers such as poly(ethyloxazoline) (PEtOx) [37, 38], poly(dimethylacrylamide) (PDMAA) [39, 40], poly(glycerols) [41], and poly(ethylene glycol) (PEG) [42]. Due to its availability, as well as biocompatible properties, PEG is perhaps the most common example of a polymeric material used to produce surfaces that are inert to nonspecific protein adsorption [43–45]. Despite PEG polymers, self-assembled monolayers (SAMs) presenting similar chemical surface-functionalities [i.e., oligo(ethylene glycol) groups] have been successfully used as protein-resistant surface-coating materials [46, 47]. Although PEG-based surface coatings are widely used, these materials also exhibit some severe limitations with respect to chemical and thermal stability. For example, Whitesides and coworkers have shown that PEG-based films can undergo autooxidative degradation in the presence of transition metals, or enzymatically *in vivo* [48]. In addition, from a mechanistic point of view, the protein resistance of PEG coatings is still controversially discussed in the literature. Nagaoka et al. proposed that the underlying mechanism governing the protein resistance of PEG coatings is the restriction of the mobility of PEG chains if protein molecules adhere to the surface. This accounts for the loss in conformational entropy of the surface-confined chains [49]. Other groups proposed the helical conformation of short PEG chains, as well as tightly bound water molecules, to be crucial for protein-resistant properties [50–52]. Based on extensive studies using short PEG segments anchored to a solid substrate via self-assembled monolayers (SAMs), Whitesides and coworkers concluded that hydrophilic surface chemistries with hydrogen-bond accepting rather than donating functionalities (i.e., acidic protons) exhibit protein-resistant properties [53]. However, to date it is not clear whether this finding holds for all kind of hydrophilic surface coatings. Mrksich and coworkers, for example, showed that surface-adsorbed monolayers exposing mannitol-groups, which offer a moiety with acidic protons, are inert to protein adsorption [54]. The latter finding is even



**Fig. 4** Examples (a) PEGylated monolayer; (b) Glucose-modified monolayer; (c) Surface-attached hyper-branched polyethylene imine; and (d) Surface-attached hyperbranched polyglycerols of surface-coatings that resist the nonspecific adsorption of proteins. (Figure reproduced in part with permission from [41])

more interesting because films consisting of different sugar derivatives do not resist the adsorption of proteins [48]. In addition to surface coatings consisting of linear PEG polymers and oligomers, branched polymeric systems, such as surface-attached PEG-derivatized poly(ethyleneimine) (PEI) [55], or dendritic polyglycerol layers [41] have also been shown to resist the nonspecific adsorption of proteins. Figure 4 schematically summarizes some of the hydrophilic surface coatings that have been shown to prevent nonspecific protein adsorption.

An interesting class of surface coatings consists of so-called polymer brushes. These are polymer monolayers that are end-attached to a surface with a high grafting density, which leads to a stretching of the molecules normal to the surface (Fig. 5) due to strong excluded volume interactions. Polymer brushes can be prepared by either growing macromolecules in situ using surface-immobilized initiator groups (“grafting from”) or by grafting end-functional macromolecules onto a reactive surface-site (“grafting to”). Note that polymer brushes can also be prepared by physisorption of block copolymers onto solid substrates from selective solvents, or by using surface-immobilized monomers and a “grafting through” process, respectively. The preparation of polymer brushes, characterization of the physicochemical



**Fig. 5** Surface-attached polymer brush (*left*); surface-attached hydrogel (*center*); and surface-attached polymer monolayer (*right*)

properties (e.g., swelling in solvents), and initial studies on interesting applications of such layers, including bioactive surfaces, are described in a comprehensive book by Advincula et al. [56], as well as in a recent review by Klok and coworkers that includes an impressive list of almost 1000 references [57].

Hydrophilic polymer brushes have been shown to resist the nonspecific adsorption of proteins. The underlying mechanism has been ascribed to a strong loss in entropy of the surface-attached chains if a protein attaches to a polymer brush; hence, protein attachment to a highly swollen polymer brush in an aqueous environment is thermodynamically unfavorable [57–59]. These brushes differ from the oligo-PEG SAM coatings described above in the sense that protein-resistance might not be influenced by the chemistry of the surface-linked macromolecules as long as neutral, water-swallowable chains of sufficient molar masses and high grafting densities are considered. Interestingly, attractive forces between a brush, swollen in water, and a protein can lead to strong protein-adsorption. This was shown in studies by Ballauff and coworkers in which charged polymer brushes (i.e., polyelectrolyte brushes) were used to confine protein molecules into/onto the brush via electrostatic interactions [34].

Similar to hydrophilic polymer brushes, surface-confined, cross-linked polymer films (i.e., surface-attached hydrogels) (Fig. 5), can prevent a nonspecific adsorption of proteins to the underlying substrate [60, 61]. The driving forces resisting protein-adsorption are again of thermodynamic nature, provided that attractive forces (e.g., electrostatic interactions or hydrogen bonding) can be neglected. Protein attachment onto the hydrogel leads to a decrease in the conformational entropy, and strong osmotic forces retain water molecules inside the gel, thus repelling proteins from the interface. Finally, hydrophilic polymer monolayers of just a few nanometers in thickness have been proven to be suitable for implementation of protein-repellent properties onto glass-substrates (Fig. 5 and Sect. 4.2) [40]. The underlying driving forces for resisting the nonspecific adsorption of proteins are probably of thermodynamic (i.e., entropic) nature, as for polymer brushes, and hydrogels.

## 4 Directed Cell Adhesion to Engineered Surfaces

Several routes have been followed to create a local environment suitable for the attachment of living cells on an artificial surface. On the basis of the insight that cell adhesion *in vivo* is based on the interaction of CAMs and proteins found in the ECM, an approach that utilizes locally deposited proteins from the ECM represents a suitable starting point for “successful” cell attachment. A close control over the local surface chemistry, on the other hand, is the decisive factor for a controlled placement of proteins on a surface, because of its influence on the whole adsorption process of the biomolecule. Although denaturation of the adsorbed proteins can significantly alter the biological functions of the protein, the degree of biomimicry of the ECM can be – in the best case – high, simply by employing the main building blocks (i.e., proteins) that constitute the extracellular space *in vivo* for applications *in vitro*. However, some restrictions apply for certain applications. The nonspecific adsorption of proteins is based on physisorption and can be altered or reversed by thermodynamic processes. For example, the cell-adhesion-mediating film can bleed off or can be replaced over time by other molecules with a higher enthalpy of adsorption. Consequently, the properties of the surface can be subject to a dynamic change in a biological environment unless the bioactive film is covalently immobilized on the surface. Furthermore, proteins are subject to proteolytic degradation and need to be replaced continuously to ensure a sufficient longevity.

Despite the problems mentioned, the passive control of protein adsorption is excellently suited for short-term applications and many situations in a controlled environment *ex vivo*.

As described in Sect. 2, the binding of CAMs is highly specific to certain peptide sequences present in the proteins of the ECM. The last few decades have seen a number of interesting approaches that employ the mere minimum binding sites for guided cell adhesion through surface modification, either by directly (e.g., through short linker molecules) placing the peptides on the substrate or by incorporation of the biomolecules into polymeric backgrounds. Although this strategy compromises on the degree of biomimicry as compared to the protein-based approach, it is able to offer unique advantages in terms of controllability of cell–substrate interactions.

In combination with the techniques for rendering a surface nonfouling (as discussed in Sect. 3), a powerful “box of building blocks” arose for the design of live-cell chips. The choice of cell- or protein-repellent components, in combination with a cell-adhesion-mediating entity, of course depends on the application. Important parameters that have to be taken into account are:

- Degree of biomimicry
- Control over the specific cell–surface interaction
- Stability and longevity of the surface coating under cell culture conditions
- Ease of synthesis and availability of components
- Microstructuring method (which also depends on the application)
- Instruments required for production and experiment

## ***4.1 Protein-Decorated Surfaces for Spatially Guided Cell Adhesion***

The deposition of proteins onto surfaces for the purpose of a guided cell adhesion requires two major prerequisites: first, the immobilized proteins have to exert their native biofunctionality towards cell binding, i.e., the specific recognition sites have to remain active and accessible for the cell. Second, the deposited protein layer has to be sufficiently stable under cell culture conditions in order to provide a controlled experimental setup. Both criteria have been the focus of extensive studies in the last two decades. As discussed, the driving forces for protein adsorption onto surfaces can be categorized into enthalpic (e.g., electrostatic interactions due to redistributions of charged groups at the interface, and hydrogen bonding, to name the most prominent kind of interactions) and entropic contributions. The latter include (partial) dehydration of the protein and/or the sorbent surface or a structural reorganization of the protein molecule [62].

For the preservation of a protein's cell-binding ability (also termed "molecular potency"), unfolding (denaturation) can be a prohibiting factor and leads to a loss of the natural adhesion-mediating ability of the protein. Results by Norde and Giacomelli, who investigated a number of proteins and surfaces, suggest that at least some conformational changes occur with most protein adsorption processes [63–65]. Although these studies indicate that adsorbed proteins retain a major part of their secondary structure, other reports propose changes in protein folding as likely causes for enhanced or impaired protein activity towards cell adhesion [66–71]. In fact, the actual role a biomolecule plays in the cell–surface interaction can be dramatically altered by the adsorption process and the resulting conformational changes in the protein. Human albumin, the most abundant protein in blood, might serve as a good example. Although it is conventionally considered nonadhesive to platelets and therefore widely used as a surface-passivation against nonspecific platelet–surface interactions in platelet adhesion studies, Sivaraman and Latour reported that platelet adhesion can be substantially mediated by specific interactions with denatured albumin, if the protein is adsorbed from low concentrations and/or onto hydrophobic surfaces [72]. Other examples for the close dependency of the biological function of a protein and its conformation include the enhanced adhesion of pre-osteoblastic cells on partially denatured collagen type I as compared to its native form [70]; and the activation of low levels of adhesion proteins (too low to promote cell adhesion when deposited by themselves) for cell adhesion by co-adsorption with high concentrations of nonadhesion proteins (likely causes for enhanced or impaired protein activity towards cell adhesion) [70]. For a more detailed discussion on the unfolding of proteins on surfaces, the reader is referred to reviews by Horbett [73, 74].

Since the build-up of multilayers of proteins on a surface is thermodynamically unfavorable (parts of the protein layer exposed towards the ambient solution may act as a kind of a swollen hydrophilic layer, rendering the adsorption of other proteins to the surface thermodynamically unfavorable), competitive adsorption becomes a decisive factor in the cell's response once the protein-coated surface is placed into

contact with cell culture media, which is often enriched with a mixture of more than 400 different proteins from the serum supplement [12]. The surface concentration of adsorbed proteins from plasma or model protein mixtures depends on their relative abundance and affinity towards the surface [75–79]. Over time, the composition of the adsorbed protein layer is subject to a dynamic change. Initial coverage is dominated by smaller proteins with a faster diffusion (e.g., albumin), which are subsequently replaced by molecules with a higher affinity towards the surface (also known as Vroman effect [80–84]). On the other hand, cells actively remodel their extracellular environment by expression of proteins or their removal by proteolysis [85–88]. Although chemisorption of the proteins (e.g., through crosslinking the biomolecules to the matrix [89, 90]), might stabilize the adsorbed layer against competitive replacement in cell culture medium, proteolysis and a consequent degradation of the biofunctional surface coating remains an issue in the control of the cell–surface interaction.

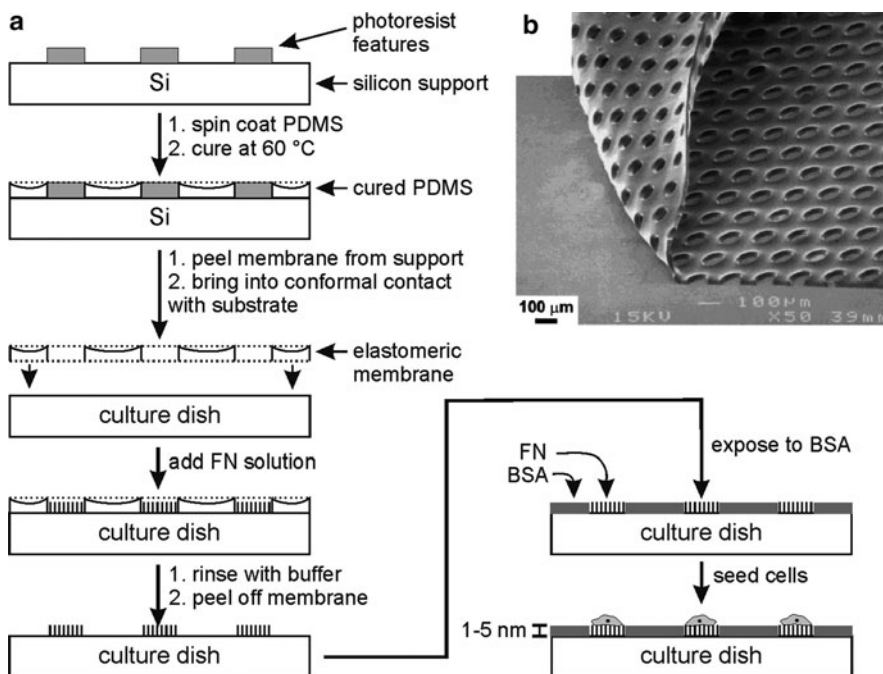
For a more comprehensive treatment of the concepts discussed here, the reader is referred to an excellent review by Wilson et al. [91]. In summary, one has to keep in mind that the composition of a protein film interacting with cells *in vitro* (and more so *in vivo*) generally differs from the initially deposited physisorbed proteins, especially if long-term experiments are conducted. Nevertheless, protein-based surface films have often been shown to provide an excellent platform for cell adhesion experiments in which the precise control of the cell–surface interactions does not play a key role.

Most reports on protein-mediated cell adhesion can be categorized into one of two basic concepts for structuring the cell-adhesive islands:

1. *Indirect patterning*: A protein repellent background is locally “opened,” rendering areas of the surface prone to protein adsorption. The patterning of cell-attractive areas is indirectly achieved by a subsequent deposition of proteins either by preincubation with a solution of proteins (most prominent are fibronectin, vitronectin, and laminin) or by adsorption from serum-supplemented cell culture media during cell seeding.
2. *Direct patterning*: Cell-adhesion-mediating proteins are directly placed on a surface that is already protein-resistant or is later backfilled with a passivating film.

#### 4.1.1 Indirect Patterning of Proteins

Whitesides and coworkers describe the use of an elastomeric membrane to pattern proteins and cells on bacteriological polystyrene (PS), glass, and poly(dimethylsiloxane) (PDMS) substrates [92]. A patterned PDMS membrane was casted from lithographically structured photoresists and brought into close contact with the substrates (Fig. 6). When incubated with a solution of fibronectin (FN), adsorption of the cell-adhesion-mediating protein to the surface was restricted to the exposed areas. The membrane was peeled off and cells were seeded from a serum-free medium. Passivation to cell attachment of the untreated portions of the surface was achieved by adding 1% bovine serum albumin (BSA) to the cell-seeding medium, which

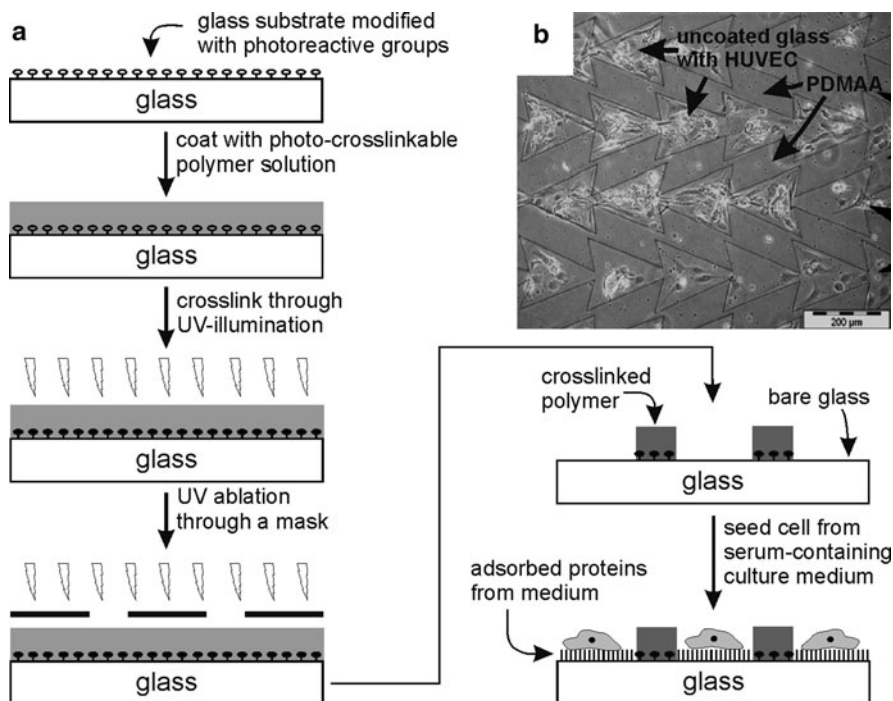


**Fig. 6** (a) Micropatterning through the use of a “lift-off membrane”: PDMS prepolymer is poured on a silicon master featuring microstructures of photoresist, and then spin coated to produce a silicone film thinner than the photoresist structures. Following a thermal curing process, the PDMS membrane can be peeled off the silicon wafer and brought into conformal contact with a standard culture plate. In the next step, the protected surface is exposed to a protein solution to allow proteins to adsorb to the uncovered culture dish. After removal of the elastomeric membrane, the remaining areas are rendered protein-repellent by a treatment with a BSA-containing solution. Cells can be subsequently seeded on the chemically micropatterned surface. (b) Scanning electron micrograph of a PDMS membrane used as a stencil for protein patterning. (Figure adapted from [92])

can adsorb to areas not coated with FN. This easy-to-use strategy for passivating the surface against cell adhesion proved to be sufficient to limit the attachment of bovine adrenal capillary endothelial (BCE) cells selectively to the FN patterned areas. However, this approach is limited to short-term experiments or the use of serum-free medium because passivation with BSA is not stable in the presence of other proteins (e.g., those present in serum supplements in cell culture medium). In an interesting variation of this approach, the group seeded cells directly onto the membrane–substrate assembly. When the PDMS membrane was passivated by adsorption of BSA before cell seeding, BCE cell adhesion could be physically constrained to the patterned areas. Following the removal of the membrane after 7–24 h in culture, spreading of the cells to the unprotected areas could be analyzed.

Protein adsorption onto intrinsically repellent materials is enhanced by a brief plasma treatment that chemically and physically alters the surface properties. Stencil-assisted plasma oxidation of inherently hydrophobic polymers (e.g., PDMS





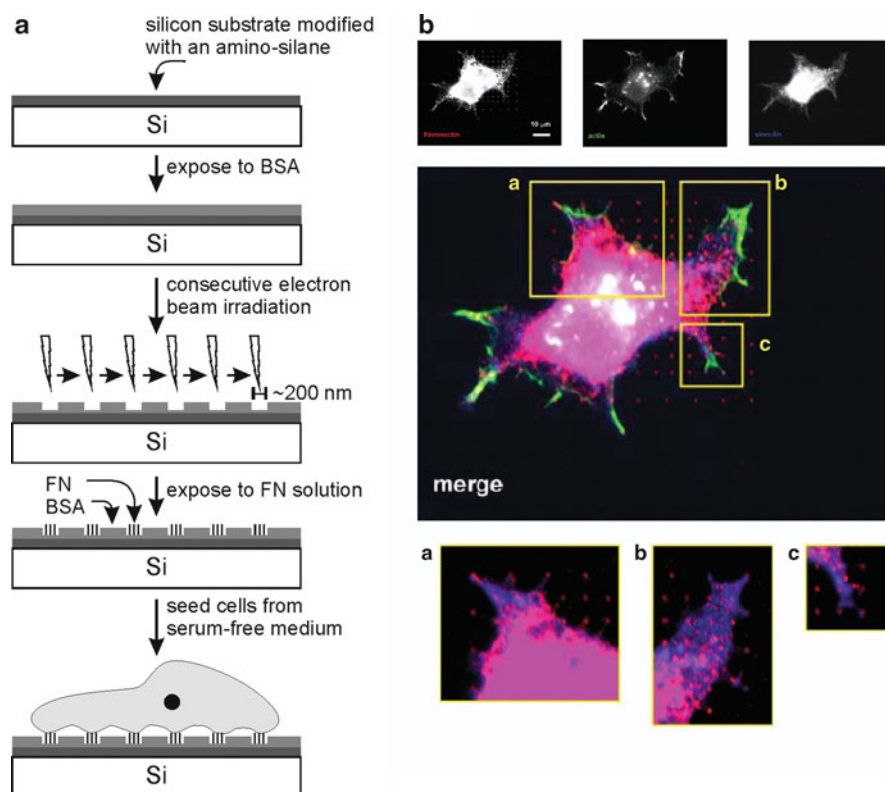
**Fig. 7** (a) Micropatterning by local photo-ablation of protein-repellent polymer hydrogel: A photo-crosslinkable prepolymer is coated onto a glass substrate bearing photoreactive groups. Simultaneous crosslinking and binding of the polymer film is achieved by illumination with UV light. The surface coating is subsequently micropatterned by UV ablation through a mask. Uncoated areas of the substrate mediate cell adhesion through unspecific adsorption of serum proteins from cell culture medium. (b) HUVEC growing on a glass surface coated with a cell-repellent PDMAA film. Microstructuring was achieved by local ablation of the protein-resistant PDMAA hydrogel. (Figure in part (b) Courtesy of Jürgen Rühle, University of Freiburg, Germany)

or PS) increases the hydrophilicity of the surface and, more importantly, introduces charged groups into the substrate and produces a pronounced roughening of PDMS and PS, favoring the adsorption of proteins in their bioactive form [93–95]. As an alternative to modification of the bulk material, a protein-repellent surface coating can be selectively removed by plasma ablation, laying bare the protein-attractive bulk substrate (Fig. 7) [93, 96–98]. Stencils for plasma treatment are commonly prepared by molding of PDMS from photoresist masters using standard photolithography methods.

Microcontact printing ( $\mu$ CP, see Fig. 10 for an example) has been used for the spatially resolved modification of gold, silver, or titanium surfaces with SAMs of methyl-terminated alkanethiolates, which favor protein adsorption [99–101]. Backfilling around the patterned protein-attractive islands was performed by a subsequent self-assembly of an ethylene-glycol-terminated alkanethiol. In a next step, the hydrophobic methyl-terminated SAMs were covered by adsorbed FN or other cell-adhesion-mediating proteins.

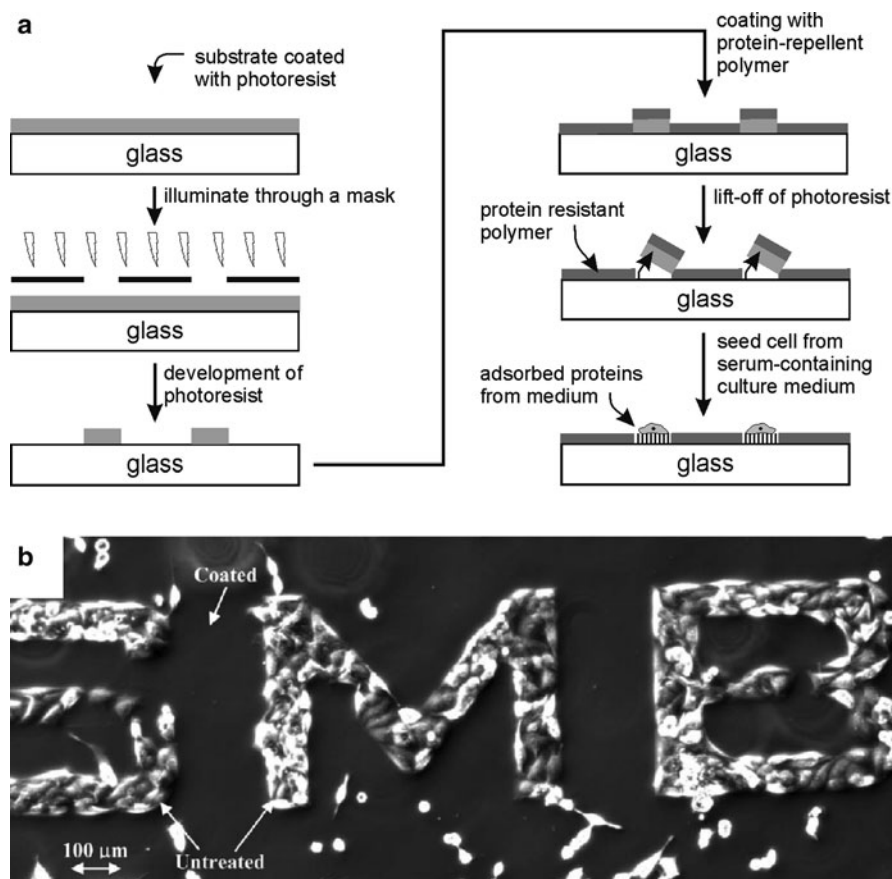


Direct writing methods have also been proposed for the generation of high-resolution cell patterns. In one example, UV laser ablation was used to locally remove polyacrylamide and thus create areas for spatially controlled protein adsorption [102]. Pesen et al. modified a layer of physisorbed BSA through electron beam lithography (EBL), creating nanodots of fragmented BSA with radii as small as 100 nm (Fig. 8) [103]. The dissociated protein acts as a template for a selective adsorption of FN, allowing precise modulation of the cell–surface contacts. Robotically controlled pin-printing of diluted solutions of sodium hypochlorite on poly(vinylalcohol) films or commercially available ultralow attachment dishes (from Corning) has been used to locally oxidize the surface, leaving it open for protein adsorption and cell adhesion [98].



**Fig. 8** (a) Nanopatterning by EBL: A silicon substrate is functionalized with an amino-silane and coated with BSA. A focused electron beam is employed to “write” nanopatterns into the BSA film. Proteins from solution can selectively adsorb into the nanopatterns and guide the formation of cell–surface contacts. (b) Fibroblast on fibronectin  $10 \times 10$  nanodot matrix created by electron beam lithography. Cells spread, and fluorescent staining of intracellular proteins shows that focal contacts are located on the nanodots: actin (green), fibronectin (red), and vinculin (blue). Areas a, b, and c are shown magnified. (Figure in part reproduced with permission from [103])

In a different approach, Bouaidat et al. adapted the lift-off technique to pattern a cell-repellent poly(ethyleneoxide)-like (PEO-like) coating on glass substrates [104]. In brief, a photoresist was microstructured using conventional photolithography, and a plasma polymerized protein-repellent film (plasma-polymerized hexene as adhesion layer and 1,4,7,10-tetraoxacyclododecane (12-crown-4)) was subsequently deposited on the substrate. Lift-off of the photoresist opened the cell-repellent PEO-like coating for a targeted adsorption of proteins (Fig. 9). The group of Chang



**Fig. 9** (a) Micropatterning through the use of the lift-off technique: A photoresist is coated onto a glass substrate and patterned by illumination through a mask. In the case of a negative resist, shaded areas remain soluble in the developer-solution and can be removed. The substrate surface is then completely modified with a protein-repellent polymer. Using a good solvent for the patterned photoresist, the polymer layer is locally removed together with the underlying photoresist ("lift-off"). (b) Optical microscope image of HeLa cells adherent on untreated glass surrounded by a PEG-like film structured through a lift-off process. The surface was not rinsed to remove unadherent (round) cells prior to inspection. (Figure in part reproduced with permission from [104])

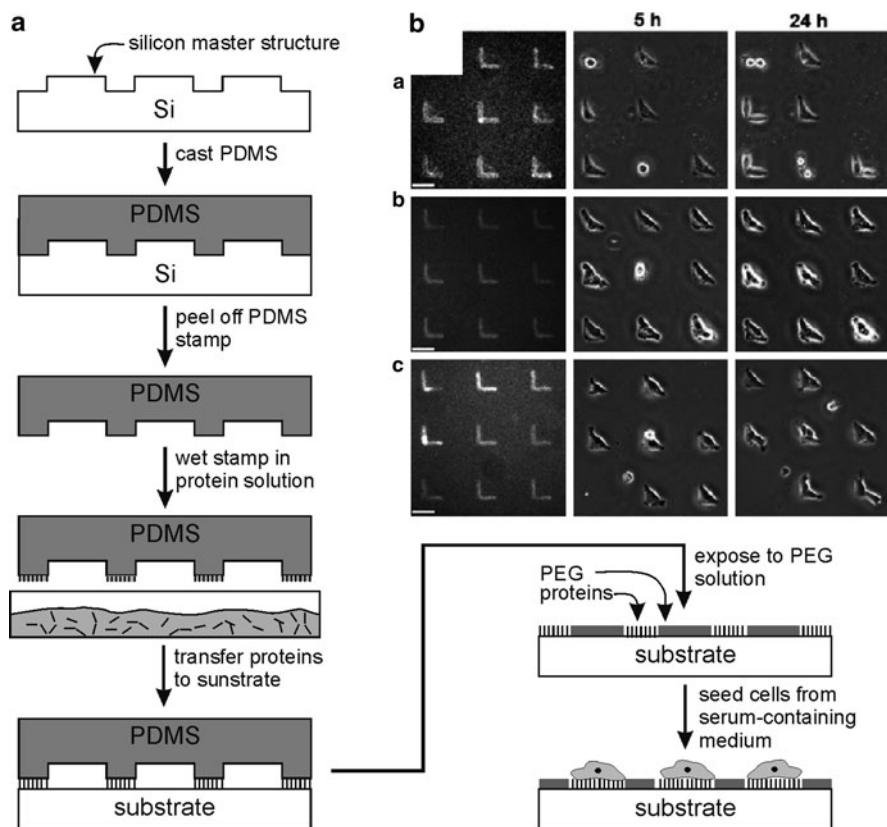
and Sretavan also chose the lift-off technique to pattern the protein-attractive areas rather than the protein-repellent patches [105]. Again, a plasma-polymerized PEO-like film was grafted onto a surface and over-coated with a photoresist. The latter was microstructured using photolithography, and the underlying PEO activated for the adsorption of polylysine by a brief plasma treatment. After the lift-off of the photoresist, the adsorbed polylysine remained on the patterned areas, enabling a successful spatially resolved cultivation of mice embryonic hippocampus neurons. Polylysine (positively charged) adsorbed to plasma-activated PEO-like films can also be used as a template to selectively adsorb other molecules (e.g., laminin or immunoglobulin G) in order to make this approach compatible with other cell types.

A way to pattern the protein-repellent background by lithography without the need for an intermediate overcoat is to incorporate a photoinitiator into the precursor solution of the polymer. For example, Revzin et al. used 1% 2,2'-dimethoxy-2-phenylacetophenone (DMPA) in poly(ethylene glycol) diacrylate (PEG-DA) precursor solution to create microwells for cell culturing that had a glass base and PEG-DA side walls [106]. As an alternative to the widely used PEG as protein-resistant background, R  he and coworkers copolymerized hydrophilic dimethylacrylamide (DMAA) and a photoreactive comonomer (benzophenone) to produce a directly photo-patternable polymer system that showed excellent protein-repellent properties [39, 107, 108]. In combination with photoreactive benzophenone-silane attached to the underlying glass substrate, polymer coatings that allow protein adsorption (e.g., PMMA) were copatterned with PDMAA hydrogel by standard mask lithography [109]. This approach allowed fine tuning of the surface-bound film to meet the specific requirements imposed by different cell types, e.g., human skin fibroblasts (HSF) and human umbilical vein endothelial cells (HUVEC) attached nicely to PMMA coating, whereas neuronal cells only adhered to PEI surfaces.

Similarly, Chien et al. used a poly(acrylic acid)/poly(acrylamide) (PAA/PAM) multilayer system in which PAA was replaced by PAA conjugated with photoreactive 4-azidoaniline (AZ) after several bilayers [110]. As a result, the polyelectrolyte multilayer could be covalently crosslinked by UV irradiation through a mask. For an enhanced cell repellence, poly(allylamine) was conjugated with poly(ethylene glycol methyl ether) and incorporated into the top layers of the film.

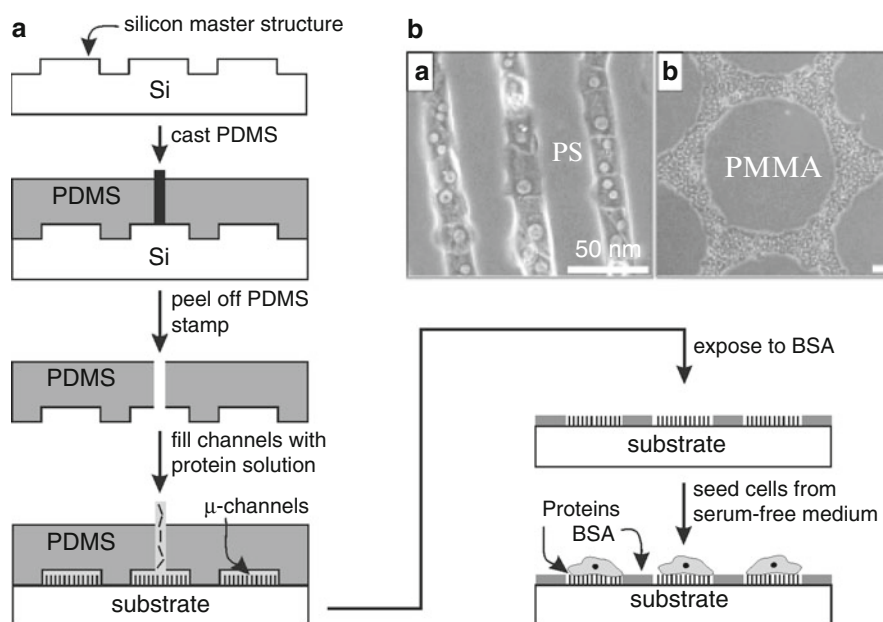
#### 4.1.2 Direct Patterning of Proteins

For the direct placement of adhesion-mediating proteins onto surfaces,  $\mu$ CP is probably one of the most popular methods (Fig. 10). This technique offers great flexibility with respect to the molecules patterned as well as to the choice of substrate. Examples include the modification of glass, PS, BSA and biodegradable polyurethane or hydrogel-coated surfaces with proteins, commonly FN, laminin, or poly-L-lysine (PLL) [89, 111–117]. The transfer of the proteins in  $\mu$ CP is done in the dry state, opening the opportunity to physisorb molecules even to substrates that prevent the adsorption of material in the hydrated state (e.g., hydrogels). In this



**Fig. 10** (a) Microstructuring by  $\mu$ CP: PDMS prepolymer is poured on a silicon master featuring microstructures of photoresist. After thermal curing, the PDMS stamp is peeled off the master structure and stamped into a protein-containing solution. After drying of the “ink solution” on the stamp, the attached proteins are transferred to another surface by placing the PDMS onto the target substrate for a short time (minutes). Uncoated areas can be backfilled with BSA, and cells are seeded onto the substrate. (b) Cell patterns produced by  $\mu$ CP on different surfaces (*top row*: untreated glass, *middle row*: tissue culture polystyrene (TCPS), *bottom row*: ibidi plastic). Printing efficiency was investigated using fibronectin-Cy3 (*left column*). Printing was followed by a backfill with PLL-g-PEG to prevent unspecific cell attachment. Cell patterns remain intact for 24 h in culture. (Figure reproduced in part with permission from [89])

case,  $\mu$ CP allows single-step patterning of proteins on an otherwise protein-repellent background (i.e., no backfill is needed). The stability of the printed protein films, especially on protein-repellent backgrounds, has been assessed for different surfaces and the results indicate a more persistent protein immobilization with an increasing “softness” of the underlying substrate [89, 111, 113, 114]. Although a sometimes reduced transfer efficiency and denaturation of the stamped (dry) proteins causes a diminished protein activity towards cell binding on the surface,  $\mu$ CP has been reported to be a very robust method for protein patterning and thus cell patterning.



**Fig. 11** (a) Microstructuring by microfluidic printing ( $\mu$ FP): PDMS prepolymer is poured onto a silicon master featuring connected microstructures of photoresist. After thermal curing, the PDMS stencil is peeled off the master structure and brought into firm contact with a substrate (e.g., glass or Petri dish). The recesses in the PDMS stencil form a microfluidic network on the substrate that is subsequently filled with a protein-containing solution. After removal of the stencil, uncoated areas are backfilled with BSA. To enhance selective cell attachment, cell seeding is performed from serum-free medium. (b) Hepatocyte micropatterns on PS (a), and PMMA (b). Surfaces were structured by microfluidic printing of ECM proteins. Substrates were backfilled with BSA, and cells were seeded in serum-free culture medium to prevent unspecific adsorption of serum proteins onto uncoated areas. (Figure in part reproduced with permission from [118])

Microfluidic patterning ( $\mu$ FP), a technique closely related to  $\mu$ CP, employs microfluidic channels to selectively deliver molecules on a surface (Fig. 11). Identically flexible as  $\mu$ CP with respect to choice of patterning solution and substrate,  $\mu$ FP is capable of depositing proteins in the wet state, thus reducing problems resulting from denaturation. Depending on the application, a subsequent backfill of uncoated areas after removal of the stamp material is, in most cases, mandatory. Another appealing property of  $\mu$ FP lies in its ability to pattern different binding proteins in a single step using separated microchannels [119]. A drawback of this technique is the geometric limitation to connected protein areas, although Folch and Toner reported the implementation of cell-adhesive islands by filling the microchannels with hot agarose [120]. After solidification of the agarose inside the channels, the PDMS stamp was removed from the support, turned upside-down and used as substrate for cell cultivation, the PDMS representing the protein- and

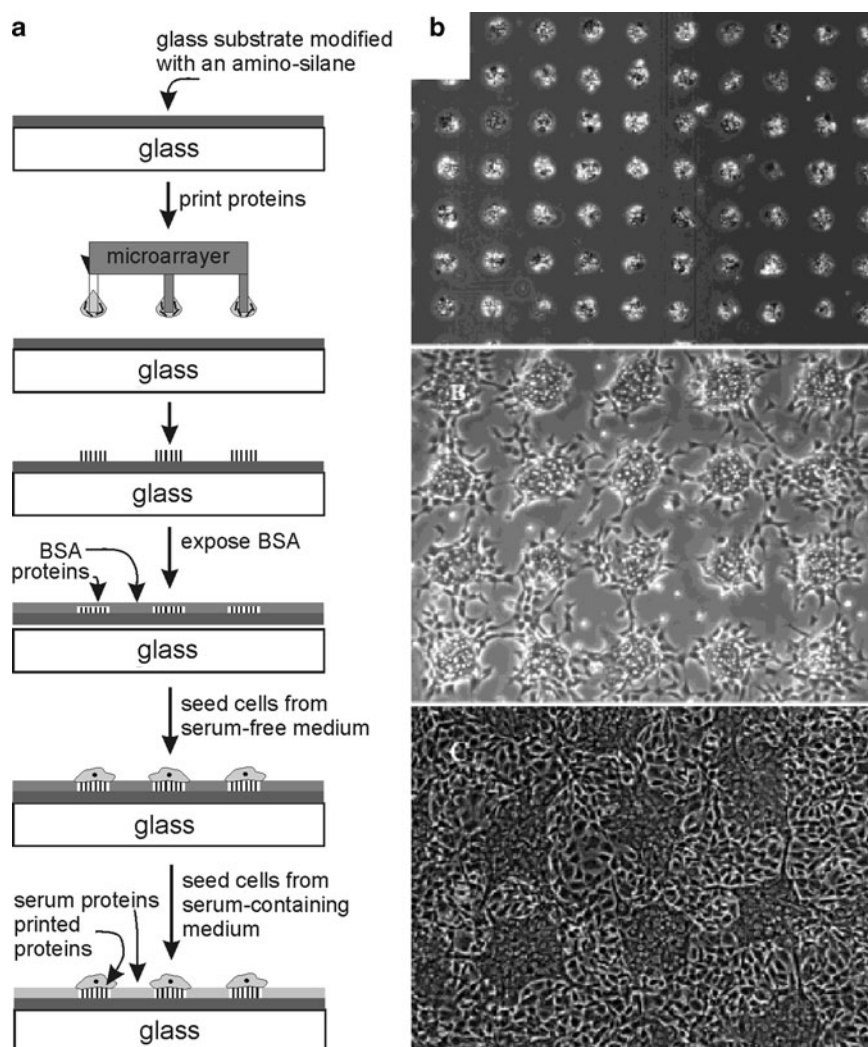
cell-attractive spots. A combination of  $\mu$ CP and  $\mu$ FP was reported by Cuvelier et al. [121]. The group used a BSA-coated PDMS stamp to create the microchannels, which were filled with a biotin-containing solution, creating protein-repellent and protein-attractive areas simultaneously.

Direct printing techniques have become a standard tool in genomics and proteomics, where large-scale and high-throughput microarrays allow fast and easy detection of thousands of different elements in a single experiment. Among other applicable molecules for printing, protein microarrays have been studied for antibody–antigen, protein–protein, protein–nucleic acid, and protein–small-molecule interactions [122, 123]. Apart from its use in proteomics, printing of proteins has also been employed in cellomics, for example by printing cell-adhesion-mediating proteins onto glass [124], and printing polymers that contain photoreactive groups for subsequent covalent binding of proteins to the surface [90]. Folch and Toner reported the preparation of cocultures of hepatocytes and fibroblasts using printed collagen arrays with a preliminary backfill of BSA during the first seeding step of hepatocytes, which was done from serum-free medium to ensure a sufficient site-selectivity in cell attachment (Fig. 12) [120]. In a second step, BSA-covered areas were populated by fibroblasts, presumably through replacement of BSA by a competitive adsorption of serum proteins contained in the medium of the second seeding.

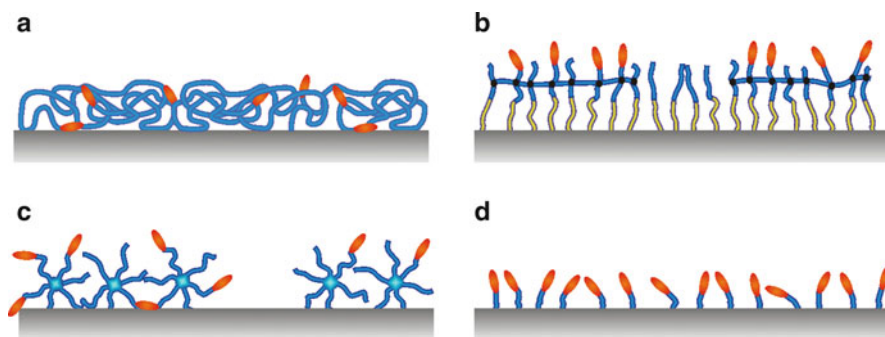
## ***4.2 Peptide-Decorated Surfaces for Spatially Guided Cell Adhesion***

Another interesting way to guide the adhesion of living cells is to selectively present the recognition sites on the surface instead of whole proteins. It is self-evident that this “breaking-down” of ECM proteins into their functional components will offer only a minimalistic, and therefore limited, reproduction of the natural environment of cells in vivo. Nevertheless, the strategy to use distinct peptide moieties for a direct mediation of cell attachment has the potential to create highly defined model systems for cell adhesion that will, and indeed have already, elevate our understanding of basic mechanisms involved in cell–substrate interaction. Apart from the chemical identity (i.e., the amino acid sequence) of the peptide, the presentation of the binding ligands to the cell is a key parameter for such investigations. In the last three decades, model surfaces have been created that allow for different degrees of control over the presentation and surface density of the functional moieties, progressing from randomly distributed peptides in polymer matrices (e.g., hydrogels or monolayers) to highly ordered systems such as SAMs of peptide–amphiphiles or star-PEG assemblies (Fig. 13). Depending on the application, scientists can nowadays choose a system that meets their requirements in terms of control of interaction, long-term stability of the cell guidance, ease of synthesis, and coating technique.





**Fig. 12 (a)** Microstructuring through contact printing: A robotic microarrayer is used to print a protein-containing solution on an amino-silane functionalized substrate (e.g., glass). Surrounding areas can be backfilled with BSA and cells are seeded from serum-free medium to enhance the site-selective attachment. In a variation of this technique, cocultures of different cell types can be achieved through addition of serum proteins to the culture medium and (using a short incubation time for the first cell type) a subsequent seeding of a second cell type on the same surface. Attachment of the first cell type is restricted to the protein-coated areas by the adsorbed BSA. Over time, BSA is replaced by proteins from the culture medium, which provide adhesion sites for cells from a second seeding. **(b)** Microstructured coculture of hepatocytes and fibroblasts. Hepatocytes adhere to printed spots of collagen surrounded by BSA (*top*). After 24 h of incubation, a second cell type (fibroblasts) was added and cells attached in the formerly BSA-coated areas (*middle*). Co-culture after 5 days of incubation (*bottom*). (Figure in part reproduced with permission from [124])



**Fig. 13** Different strategies for immobilizing peptide moieties on solid surfaces. **(a)** Peptide-polymer hybrid copolymers are attached to the substrate, offering no direct control of the peptide orientation (scheme refers to surfaces introduced by [40, 135]). The peptide moieties are statistically distributed in the polymer film. **(b)** A polymerized monolayer of peptide-amphiphiles is immobilized on a planar substrate, giving control over peptide orientation and concentration on the surface through coattachment of a nonmodified polymerizable amphiphile (scheme refers to surfaces introduced by [134]). **(c)** Minimal integrin adhesion ligands (YGRGD) are attached to surface-immobilized star PEO tethers to allow control over spatial distribution (through the formation of clusters of more than one peptide per star molecule) and the total average concentration (through blending with unmodified star polymers) (scheme refers to surfaces introduced by [146]). **(d)** RGD moieties are attached to substrates using virtually no spacer, giving an excellent control over peptide concentration at the cost of limited flexibility for peptide clustering (scheme refers to surfaces introduced by [145])

Many approaches comprise some attractive features with respect to specific binding to certain integrins and long-term stability of the produced surface coatings. In order to ensure the exclusive interaction of the cells with the recognition sites presented (and not with unspecifically adsorbed proteins), the matrix (i.e., the background) must possess protein-repellent properties.

Moreover, a strong linkage of the adhesion moiety to the polymer matrix is the prerequisite to supply a mechanically and chemically stable support for cell adhesion that withstands the considerable contractile forces exerted by many cell types [125–127]. Furthermore, cells can actively remodel their extracellular environment by redistribution or internalization of small and mobile ligands [68, 125, 127–131]. A number of chemistries are readily available for covalently attaching short peptide sequences to a polymeric background. For an in-depth discussion of this topic, the interested reader is referred to reviews by Tirrell et al. and by Hersel and Kessler [29, 132]. Most commonly, the peptide is grafted to an already protein-repellent surface in a postsynthetic modification step, either via its amine or carboxylic acid end-group, by bioconjugate chemistry means or through photoreactive linkers (e.g., benzophenone or aromatic azide functionalized peptides). The introduction of suitable functional groups into the polymeric background can be achieved by blending of polymers with functional groups with the base polymer, by copolymerization or through a chemical or physical treatment of the protein-repellent background, such as alkaline hydrolysis, reduction or oxidation, track-etching,



or plasma deposition. As an alternative to the postsynthetic modification of a preformed polymeric background, the employment of so-called peptide–polymer hybrid materials was suggested [133–135]. Hereby, solid-phase organic synthesis is used to attach specific peptide moieties to synthetic polymers or amphiphiles, or vice versa. The resulting peptide–polymer hybrids are then self-assembled (in the case of peptide–amphiphiles) or chemically immobilized onto a surface.

The last three decades have seen great advances in the characterization of specific cell–substrate interactions through the use of peptide-containing surfaces [29]. Several parameters have been identified that influence the specificity and binding efficacy of synthetically formed biomimetic films. Among these, the conformation of the presented peptide ligand plays an important role. For example, if the RGD peptide is isolated from the context of the protein, it loses some specificity as well as binding affinity to integrins as compared to its native counterpart [24]. However, if the RGD sequence is presented in a “looped” conformation resembling its natural structure in FN more closely, the adhesion and spreading of cells is enhanced, as compared to the linear peptide, in a concentration-dependent manner [136, 137]. Cell attachment is also influenced by the presence of immediate side groups and short peptide sequences in close proximity (so-called synergy sites) to the integrin-binding motif RGD. Hirano et al. compared the binding affinity of different tetra-peptides comprising the RGD sequence derived from the ECM proteins FN (RGDS), vitronectin (RGDV), and collagen (RGDT) towards five cell types. They found a strong influence of the residue amino acid X in RGD<sub>X</sub> on the cell-binding activity [138]. The incorporation of the recognition site into its wider context in nature – instead of using the minimal recognition sequences – was also found to improve cell response. For example, in FN the peptide sequence PHSRN is found in the ninth type III module (FNIII9) and therefore in close proximity to the recognition motif RGD (FNIII10). When tested for its influence on cell attachment, the synergy site PHSRN in a defined distance to RGD was found to lead to an overall strengthening of the cell–substrate binding as compared to the minimal recognition motif RGD [139, 140]. However, whether PHSRN acts as a synergy site only, or binds to the integrin receptor in a competitive fashion, is still controversially discussed [141].

Apart from a favorable conformation and context of the peptide, the *accessibility* of the recognition motif for the integrin-binding site must be provided by the artificial synthetic background. A number of studies investigated the optimal spacer length between recognition site and polymeric support. Through systematic introduction of amino acids between the binding motif and the background, a spacer length of 3–4 nm was identified by several groups as optimal with regard to cell adhesion [142–144]. In other experiments by Massia and Hubbell however, although virtually no spacer between GRGDY and the anchoring group to a glass surface was used, satisfying adhesion of human foreskin fibroblasts could be observed (Fig. 13d) [145]. Although the question of whether a spacer is needed or not has not yet been fully resolved, most systems incorporate some form of soft polymeric matrix (e.g., hydrogels, brushes, or SAMs, as outlined in Sect. 3) for protein-repellent purposes as a background for peptide immobilization and thus provide at least some flexibility and mobility to the recognition motifs.

Another parameter that influences the ability of a bioactive surface coating to mediate cell adhesion is the surface concentration of the binding recognition site. Pioneer work on the question of minimal peptide concentrations for cell attachment was reported by Massia and Hubbell in 1991 [145]. Here, a functionalized peptide-ligand was directly immobilized onto glass substrates. The concentration of the peptide was varied by coimmobilizing an inert compound that does not support cell attachment. Using these substrates, a minimum surface concentration of GRGDY ligand of  $1 \text{ fmol/cm}^2$  was sufficient to promote fibroblast cell spreading on an otherwise poorly adhesive glass substrate. However, a tenfold higher surface concentration (i.e.,  $10 \text{ fmol/cm}^2$ ) was needed to induce the formation of focal contacts.

Besides the overall concentration of the recognition motif on the surface, the lateral distribution of the presented peptides can also evoke different cellular responses, e.g., trigger the aggregation of integrins in the cell membrane to form focal adhesions [146–148]. For the investigation of the effects of peptide clustering in a polymeric film, star-like polymers were functionalized with a recognition motif (Fig. 13c) [146]. Nanoscale RGD clustering, for example, was found to result in a significantly higher stress resistance and in the formation of well-formed stress fibers and focal contacts in fibroblasts. Using block copolymer micelle nanolithography, Spatz and coworkers were able to control the lateral spacing of single integrin-receptor binding sites by a highly defined presentation of cyclic RGD peptide on a rather rigid support [149]. Their studies emphasize the importance of nanoscale integrin clustering over the macroscale peptide density for normal cell adhesion and cytoskeleton development.

Although the RGD motif is by far the most studied cell-binding moiety, other peptide sequences have been identified for specific cell binding [150, 151]. The exact peptide sequence presented has a significant influence on the selectivity towards certain integrins and thus different cell types [152–155]. This difference in affinity has been exploited by Plouffe et al. for the design of an adhesion-based cell separating system, embedded in a microfluidic device [154, 155]. Using three successive stages of different peptide coatings (REDV, VAPG, and RGDS) in a microchannel, a heterogeneous cell suspension of endothelial cells, smooth muscle cells, and fibroblasts could be successfully depleted. This could open the door to an automated cell-sorting device that selectively immobilizes cells on the basis of the expression level of certain integrins.

The deciphering of the fundamental mechanisms involved in integrin-mediated cell adhesion has come a long way since the discovery of the minimal recognition motif RGD(S) by Pierschbacher and Ruoslahti in 1984 [24]. Synthetic peptide–polymer model systems presenting biofunctional moieties in a highly defined context contribute an important tool to this quest. Although precise control over parameters such as peptide surface concentration and distribution (i.e., clustering), spacer length, and conformation of the binding motif often requires elaborate synthesis and coating protocols for the biofunctional conjugate, alternative approaches exist that provide for a more simple, versatile and chemically stable surface modification. Although compromising on the degree of control over the

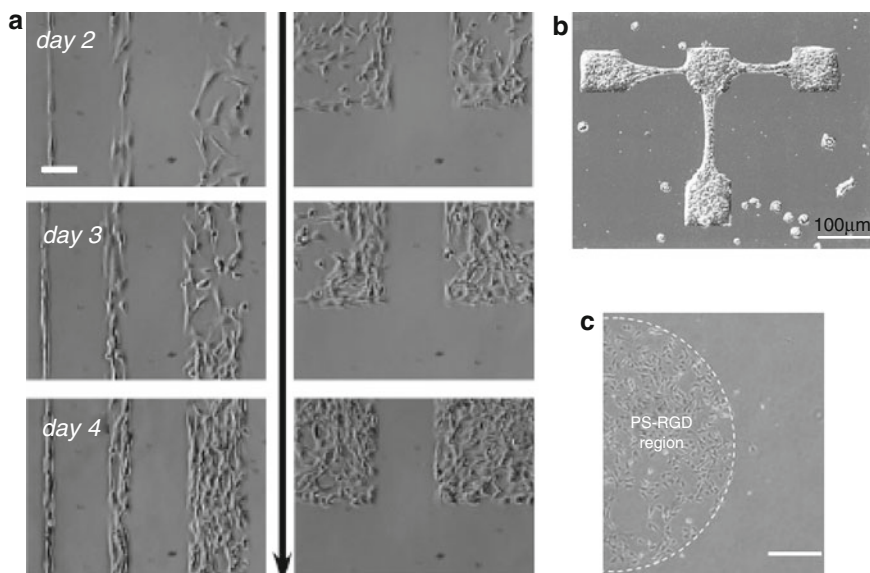
exact presentation of the peptide, these systems constitute an extremely defined environment for cell–matrix interactions. Moreover, well-designed setups (e.g., based on postsynthetically peptide-modified hydrogels or surface-bound peptide–polymer monolayers) often allow for long-term cell studies while preserving their comparatively high inertness towards changes in the experimental conditions (e.g., induced by protein adsorption/desorption, or proteolytic degradation).

Compared to systems that rely on protein adsorption for spatially guided cell adhesion, reports on cell chips based on peptide-mediated adhesion are less frequent, but emerging. In principle, identical methods to those used for the microstructuring of proteins can be employed for peptides, although reports on direct patterning (controlled deposition of peptides) prevail.

As for protein patterning,  $\mu$ CP of thiol-conjugated molecules onto gold surfaces was among the first methods used for locally resolved deposition of peptides. Zhang et al. used a combination of microcontact-printed ethylene glycol thiolate and self-assembled oligopeptides containing the cell adhesion motif (RADS) and a cysteine linker to guide the adhesion of cells onto gold substrates (Fig. 14) [156].

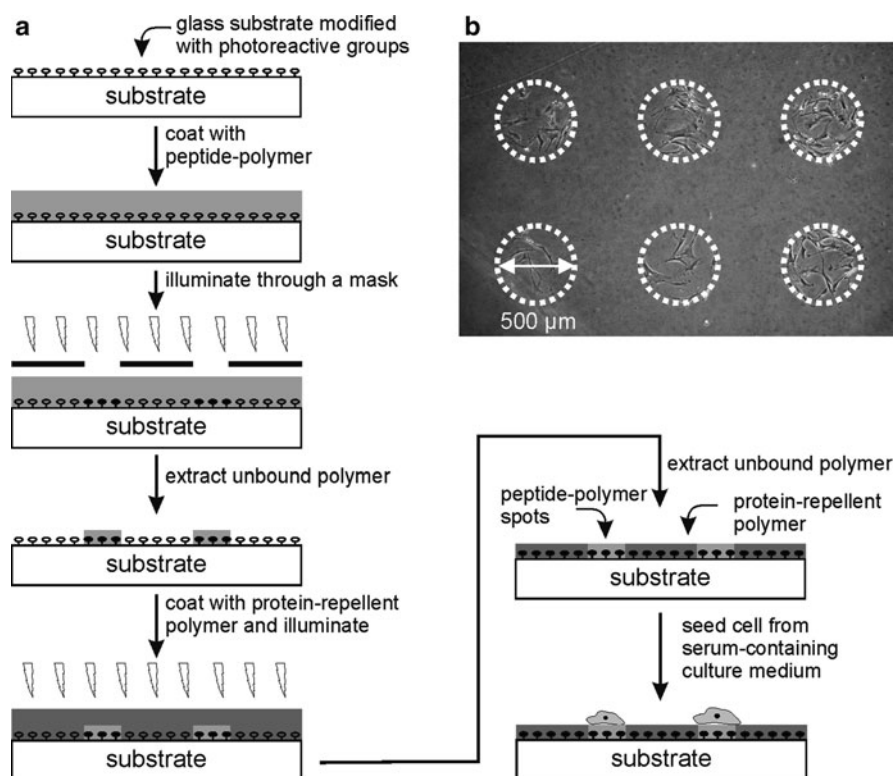
Grainger and coworkers used commercially available telechelic *N*-hydroxy succinimide (NHS)-terminated PEG to create a protein-resistant film containing reactive groups [157]. Microstructuring was achieved through a conventional photolithographic process based on microstructuring of a photoresist film deposited onto the hydrogel, which serves in a second step as a stencil for site-selective methoxylation of exposed areas. Following removal of the photoresist, the remaining NHS-capped regions were treated with a GRGDS peptide, allowing for covalent attachment of the adhesion-mediating ligand. Fibroblasts (NIH-3T3) adhered exclusively to the RGD-patterned areas and showed a “normal” behavior with respect to proliferation and spreading (Fig. 14). Our own group recently reported on the synthesis and spatially resolved surface immobilization of a peptide–polymer hybrid for the controlled adhesion of cells (Fig. 15) [40, 135]. The novel peptide–polymer hybrid was synthesized by a controlled radical polymerization of dimethylacrylamide (DMAA) from an initiator-modified RGD peptide [135]. Monolayers of hydrophilic peptide–PDMAA were shown to resist the unspecific adsorption of proteins and can be covalently bound and microstructured by lithography on surfaces modified with photoreactive benzophenone groups [40]. Peptide–PDMAA areas can be back-filled with (chemically almost identical) PDMAA and shown to be able to locally constrain the adhesion of human fibroblasts under serum conditions for more than 2 weeks.

Printing of peptides, either using a contact pin microarrayer [124, 159] or non-contact printer (using ink-jet technology) [160, 161], was used as a versatile tool for delivery of cell-adhesive ligands onto protein-repellent surfaces (Fig. 14). An attractive property of this technique lies in the ability to simultaneously print different peptides in one step. For example, Monchaux and Vermette used a noncontact automatic dispensing robot to covalently graft three different bioactive peptides in combination with RGD on a protein-repellent carboxy-methyl-dextran (CMD) background [161]. Although RGD was necessary to initiate the adhesion of endothelial and fibroblast cells, the coimmobilization of SVVYGLR or VEGF enhanced



**Fig. 14** (a) Photolithographic lift-off process has been used to selectively deactivate a commercially available amine-reactive polymer coating (OptiChem, Accelr8 Technology, Denver, CO) (please refer to Fig. 8 for a process description). After removal of the photoresist, RGD peptide was immobilized in unreacted areas. NIH-3T3 fibroblasts follow the implemented structures for several days. (Figure in part reproduced with permission from [159]). (b) Human epidermal carcinoma cells on self-assembled monolayer of oligopeptides containing the cell-adhesion motif RADS. Microstructures were transferred onto gold-coated silicon surfaces by microcontact printing of ethylene glycol thiolate and a subsequent backfill with the thiolated oligopeptides (please refer to Fig. 10 for a process description). Note that the unpatterned round cells are not adherent not the surface, but free-floating. (Figure in part reproduced with permission from [156]). (c) PS-binding peptides were printed by an automated pin microarrayer on native PS (please refer to Fig. 12 for a process description). A subsequent backfill with BSA renders the remaining PS surface sufficiently protein repellent to confine HUVEC attachment to the peptide-coated areas. (Figure in part reproduced with permission from [157]). Scale bars: 100 μm

endothelial cell adhesion, and coimmobilization of SVVYGLR and REDV caused a reduction of cell spreading. Combination of RGD with any of the three bioactive molecules interfered with the formation of stress fibers and caused a rearrangement of focal adhesions in endothelial cells. Interestingly, fibroblasts were not affected by spot composition. EBL, another direct writing technique, was employed in combination with block copolymer nanolithography of gold nanodots by Spatz and coworkers for the implementation of micro-nanostructured interfaces of cyclic RDGfK-thiols [149]. This approach allows a remarkable degree of control over the integrin–receptor interaction because it combines a defined presentation of the peptide (loop-type conformation), a precise control of the single peptide spacing (through block copolymer nanolithography and short thiol anchors), as well as an arbitrary distribution of the cell-adhesive spots on the surface (by electron beam patterning of the gold nanodots).



**Fig. 15** (a) Microstructuring by photopatterning: A direct photoinduced structuring of surface chemistry has been employed by our own group to guide human skin fibroblasts on peptide-polymer monolayers. Here, we used a surface-bound photoreactive benzophenone-silane to covalently attach monolayers of a cell-attractive, yet protein-repellent RGD-polymer (GRGDSP-PDMAA) on glass using UV illumination through a mask. Polymer in the shaded areas can be extracted, and the peptide-polymer microstructures are backfilled with a protein-repellent polymer (PDMAA). (b) Human skin fibroblasts adhere to peptide-polymer spots implemented in a protein-repellent environment through direct photopatterning. Cells follow the implemented structures for more than 2 weeks in culture [40]

As reviewed in this chapter, surface chemistry plays a key role in the interaction between living cells and artificial substrates. However, reducing this complex interplay solely to the underlying chemistry would draw a too-simplified picture. Cells are also highly sensitive to other environmental cues such as surface topography and elasticity, which can influence almost any aspect of a cell's life, from cell proliferation, contraction, migration, internal cytoskeleton organization, and even cell death [162]. A thorough discussion of these influences lies far beyond the scope of this article and the interested reader is referred to an interesting recent commentary as well as references therein [162]. Tables 2 and 3 summarize recent examples of bioactive, microengineered surfaces for the spatial control of the attachment and outgrowth of living cells, using protein- or peptide-decorated surfaces. We hope that they serve to outline recent trends and strategies in the implementation of cell chips (Tables 2 and 3).

**Table 2** Examples for microengineered surfaces for a spatially controlled cell attachment that use proteins as adhesion-mediating component

Cell-adhesion-mediating compound	Cell-resistant compound	Cell types tested	Patterning technique	Year	Ref.
<i>Indirect protein patterning</i>					
Serum proteins from cell culture medium	PDMS, methylated glass, bacterial grade PS	Human epithelial cells, human keratinocytes, human neuroblastoma cells, human breast cancer cells, human fibroblasts, human embryonic kidney cells, murine macrophages	Stencil guided plasma induced oxidation of hydrophobic surfaces	2009	[93]
Serum proteins from cell culture medium	PDMS	Human liver carcinoma cells	Photocatalytic hydrophilization of PDMS (mask lithography)	2009	[163]
Deposition from serum-free medium; culturing: in serum-containing medium	Fluorinated polymer	Spatially separated coculture of human alveolar epithelial cells, human hepatoma cells, and mouse 3T3 fibroblast	Photocatalytic removal of fluorinated polymer (mask lithography)	2009	[164]
Collagen, poly-L-lysine/serum proteins from cell culture medium	Crosslinked polyacrylic acid/polyacrylamide multilayer films, PEG	Coculture of rat adrenal medulla cells and mouse fibroblasts L929	Photopatterning of polyelectrolyte multilayer film	2009	[110]
Serum proteins from cell culture medium	PEG	CHO-K1, MDCK, Balb/3T3, HepG2	UV patterning of photoresponsive polymer in situ to release physisorbed PEG	2009	[165]

First seeding: collagen	First seeding: collagen-specific attachment of hepatocytes	Coculture of primary rat hepatocytes and 3T3-J2 fibroblasts	Membrane-based patterning of protein	2008	[166]
Second seeding: serum proteins from cell culture medium	Second seeding: contact-inhibition in cell cocultures				
Serum proteins from cell culture medium	OEG-thiol	CaSki, HeLa, 3T3 fibroblasts	Release of OEG-thiol SAM from gold electrodes	2008	[167]
Adsorbed polylysine on plasma-activated PEG	PEO	Hippocampal neurons from embryonic mice	Photolithography for local oxidation of PEO (lift-off process), protein backfill	2008	[105]
Fibronectin	PLL- <i>g</i> -PEG-wells	HUVEC	Inverted $\mu$ CP of protein resistant PLL- <i>g</i> -PEG on PDMS microstructures, protein backfill	2007	[168]
Poly-L-lysine/serum proteins from cell culture medium	PEG-DMA	NIH-3T3 fibroblasts	$\mu$ FP of PEG-DMA on PEL	2007	[169]
Serum proteins from cell culture medium	PDMAA network	HUVEC, human skin fibroblasts	UV patterning of photoresponsive protein-resistant polymer	2007	[39]
Fibronectin	BSA	Swiss 3T3 fibroblasts	EBL to open protein-resistant BSA film, protein backfill	2007	[103]
Serum proteins from cell culture medium	None, direct placement of cells	Murine embryonic stem cells	Bio Flip Chip	2007	[170]

(continued)

**Table 2** (continued)

Cell-adhesion-mediating compound	Cell-resistant compound	Cell types tested	Patterning technique	Year	Ref.
Serum proteins from cell culture medium	Polyvinyl alcohol (PVA)	Rat skeletal myoblasts, human embryonic kidney cells, colon carcinoma cells	$\mu$ CP of etching solution or UV ablation of PVA	2006	[98]
Fibronectin	BSA	Bovine adrenal capillary endothelial cells	Membrane-based patterning of protein, BSA backfill	2000	[92]
Fibronectin	Polyacrylamide	Bovine carotid artery endothelial cells	UV excimer laser ablation to open polyacrylamide coating, protein backfill	2005	[102]
Serum proteins from cell culture medium	PEO	HeLa	Photolithography and lift-off process/PEO	2004	[104]
Serum proteins from cell culture medium	Poly(AAm-co-EG) network	Murine NIH 3T3 fibroblasts, C2C12 myoblasts, rat aorta smooth muscle cells, and rat aortic endothelial cells	Stencilguided plasma-induced oxidation of protein-resistant polymer network	2003	[96]
Serum proteins from cell culture medium, collagen	PEG	Murine 3T3 fibroblasts, primary rat hepatocytes	Photopatterning of PEG-DA film containing a photoinitiator	2003	[106]
Fibronectin	BSA	Bovine adrenal capillary endothelial cells	Selective wetting of topographical features with BSA, protein backfill	2000	[171]



Serum proteins from cell culture medium, fibronectin, collagen	Native PS, pluronic F68, BSA	Pheochromocytoma (PC12) cells, Schwann (MSC80) cells	Plasma induced oxidation of PS guided by photoresist patterns	1998	[97]
Fibronectin	PEG-terminated alkanthiols	Bovine capillary endothelial cells, human microvascular endothelial cells	$\mu$ CP of alkanthiols on gold surface, protein backfill	1997, 1998	[99, 101]
Laminin	PEG-terminated alkanthiols	Primary rat hepatocytes	$\mu$ CP of alkanthiols on gold surface, protein backfill	1994	[100]
<i>Direct protein patterning</i>					
Laminin	Polyacrylamide-based hydrogel	Murine skeletal muscle cells, rat neonatal cardiomyocytes, primary myocytes	$\mu$ CP of protein on hydrogel background	2009	[111]
Poly-L-lysine/serum proteins from cell culture medium	PEO	Neuronal stem cells	$\mu$ CP of poly-L-lysine on PEO background	2008	[172]
Concanavalin A	Crosslinked star-PEG	Crick terminal ganglia neurons	$\mu$ CP of protein on partly crosslinked star-PEG background	2008, 2007	[115, 117]
Fibronectin, collagen	PEG	HeLa, embryonic mouse fibroblasts, human epithelial cells	$\mu$ CP of proteins or PEG, photo- patterning through light-induced crosslinking of FN-benzophenone	2007	[89]

(continued)

Table 2 (continued)

Cell-adhesion-mediating compound	Cell-resistant compound	Cell types tested	Patterning technique	Year	Ref.
Fibronectin, collagen	Photoreactive PVA modified with phenylazido groups	Monkey kidney fibroblasts, murine macrophage-like cells, human liver carcinoma cells, mouse embryonic fibroblasts	µCP of proteins onto hydrogel background and subsequent photoactivated immobilization	2005	[90]
Streptavidin conjugated to immobilized biotin	BSA, PEG	Red blood cells	µCP of protein-linker with PEG backfill simultaneous coating of protein linker via µFP	2003	[121]
Laminin	BSA	Primary rat cardiomyocytes	µCP of protein onto BSA-coated PS or poly-urethane	2002, 2003	[113, 114]
First seeding: fibronectin, collagen	First seeding: serum depletion of culture medium	Coculture of rat hepatocytes and 3T3-J2 fibroblasts	µFP of proteins	1998	[120]
Second seeding: serum proteins from cell culture medium	Second seeding: contact-inhibition in cell cocultures				
Laminin	Contact-inhibition in cell cocultures, additional cell patterning with PEG-DA microwells	Coculture of primary rat hepatocytes and 3T3 fibroblasts	Contact-printing of protein	2004	[124]

**Table 3** Examples of microengineered surfaces for a spatially controlled cell attachment that use peptides as adhesion mediating component

Cell-adhesion-mediating compound	Repellent compound	Cell types tested	Patterning technique	Year	Ref.
----------------------------------	--------------------	-------------------	----------------------	------	------

GRGSP-PDMAA	PDMAA	Normal human skin fibroblasts	Covalent immobilization of protein resistant PDMAA monolayers to surface-bound photoreactive linkers by lithography through a mask, subsequent backfill and immobilization of peptide-PDMAA (or vice versa)	2008, 2009	[40, 135]
GRGDS	Methoxy-capped PEG	NIH-3T3 fibroblasts	Local modification of NHS-terminated PEG with 2-methoxyethylamine through a micropatterned photoresist (photolithography), backfill with peptide after resist removal	2008	[157]
RGDS	Poly( <i>N</i> -isopropylacrylamide) (PIPAAm)	NIH-3T3 fibroblasts	Electron beam activated polymerization of 2-carboxy- <i>N</i> -isopropylacrylamide through a mask on PIPAAm (or vice versa), subsequent NHS mediated binding of peptide to carboxyl functional groups	2007	[173]

(continued)

Table 3 (continued)

Cell-adhesion-mediating compound	Repellent compound	Cell types tested	Patterning technique	Year	Ref.
(RADS) <sub>2</sub> and <sub>3</sub> with alanine spacer	OEG	Human epidermoid carcinoma cells	µCP of ethylene glycol thiolate on gold, backfill with peptide (with cysteine anchor group)	1999	[156]
Cyclic RGDfK	PEG	Mouse osteoblasts and melanocytes, rat fibroblasts	Electron beam patterning of nanopatterned Au-nanodots on PEGmodified substrates, backfill with peptide (with lysine anchor group)	2004	[149]
Direct peptide patterning PS-binding peptides with RGD, RGE, and biotin end-group	BSA	HUVEC	Pin-microarrayer to print PS-binding peptides, BSA backfill	2009	[159]
	PEG-DA	HUVEC	Local polymerization of a peptide-PEG precursor solution to a PEG hydrogel by lithography through a mask	2009	[174]
	PEG-DA	Human dermal fibroblasts	Two-photon laser scanning photolithography to crosslink peptide-PEG inside a precrosslinked hydrogel to create 3D cell adhesion patterns	2008	[175]
RGDS-PEG	PEG-DA				
GRGDS, GRGES, GREDVDY, GSVVYGLR	Carboxy-methyl-dextran	HUVEC, human foreskin fibroblasts	Noncontact printing of peptides onto activated hydrogel	2007	[161]

## 5 Conclusions and Outlook

Precise control of the interaction between an artificial surface and the biological environment is the key challenge for any successful interplay of the biological world with man-made technology. Live-cell biochips are increasingly attractive to both academia and industry due to a large number of potentially interesting applications, progressing from pharmaceutical sciences to biosensor development, and to bio-physical model systems.

The demands that are posed on the surface coating are challenging. The coating must provide areas that are inert to cell adhesion in the neighborhood of regions that allow, promote, and sustain the adhesion of living cells, all this in the context of a complex, changing and insufficiently defined environment, such as found in modern cell culture. Derived from nature, proteins or even short peptide-ligands, micropatterned on the surface, are used to guide cell adhesion in a spatially resolved manner. Both strategies, protein- and peptide-mediated cell adhesion, offer distinct advantages in terms of a high biomimicry for cell–matrix adhesion (as for proteins) or a precise control over integrin–ligand interactions (as for peptides). Restriction of cell adhesion to defined spots demands equally challenging properties, especially with respect to the longevity of cell- and protein-repellence *in vitro*. Scientists have gathered a toolbox of different surface-coating strategies that allow the engineering of surfaces that resist nonspecific protein-adsorption and thus prevent non-desired protein-mediated cell adhesion. Examples include polymer brushes, surface-attached hydrogels, and hydrophilic, noncharged polymer monolayers.

Eventually, the optimal combination of cell-attractive and cell-repellent surface modification depends on the application and, although we have witnessed a number of very promising design strategies, successful integration into technological microdevices is still to come. With respect to the latter, persistency of the coating *in vitro*, the exact control of the cell–surface interaction, and the ability to induce and understand “normal” cell behavior on-chip, are of utmost importance and need to be covered by extensive (comparative) studies in the future.

## References

1. Goodsell DS (2004) *Bionanotechnology – lessons from nature*. Wiley, Hoboken, NJ
2. Staples M, Daniel K, Cima MJ, Langer R (2006) Application of micro- and nano-electromechanical devices to drug delivery. *Pharmaceut Res* 23:847–863
3. Santini JT, Cima MJ, Langer R (1999) A controlled-release microchip. *Nature* 397:335–338
4. Lee SJ, Lee SY (2004) Micro total analysis system ( $\mu$ -TAS) in biotechnology. *Appl Microbiol Biotechnol* 64:289–299
5. Willner I, Willner B (2001) Biomaterials integrated with electronic elements: en route to bioelectronics. *Trends Biotechnol* 19:222–230
6. Voldman J, Gray ML, Schmidt MA (1999) Microfabrication in biology and medicine. *Annu Rev Biomed Eng* 1:401–425
7. Brown PO, Botstein D (1999) Exploring the new world of the genome with DNA microarrays. *Nat Genet* 21:33–37

8. Panda S, Sato TK, Hampton GM (2003) An arrays of insights: application of DNA chip technology in the study of cell biology. *Trends Cell Biol* 13(3):151–156
9. Norde W, Baszkin A (2000) Physical chemistry of biological interfaces. Marcel Dekker, New York
10. Templin MF, Stoll D, Schwenk JM et al (2003) Protein microarrays: promising tools for proteomic research. *Proteomics* 3:2155–2166
11. Lodish H, Berk A, Zipursky SL, Matsudaira P, Baltimore D, Darnell J (2000) Molecular cell biology, 4th edn. Freeman, New York
12. Alberts B, Bray D, Lewis J et al (2002) Molecular biology of the cell, 4th edn. Taylor & Francis, New York
13. Hynes RO (2002) Integrins: bidirectional, allosteric signaling machines. *Cell* 110:673–687
14. van der Flier A, Sonnenberg A (2001) Function and interactions of integrins. *Cell Tissue Res* 305:285–298
15. Humphries MJ (1990) The molecular basis and specificity of integrin ligand interactions. *J Cell Sci* 97:585
16. Zamir E, Geiger B (2001) Molecular complexity and dynamics of cell-matrix adhesions. *J Cell Sci* 114:3583–3590
17. Geiger B, Bershadsky A (2001) Assembly and mechanosensory function of focal contacts. *Curr Opin Cell Biol* 13:584–592
18. Petit V, Thiery JP (2000) Focal adhesions: structure and dynamics. *Cell* 92:477–494
19. Pande G (2000) The role of membrane lipids in regulation of integrin functions. *Curr Opin Cell Biol* 12:569–574
20. Albeda SM, Buck CA (1990) Integrins and other cell adhesion molecules. *FASEB J* 4: 2868–2880
21. Travis J (1993) Frontiers in biotechnology – biotech gets a grip on cell adhesion. *Science* 260:906–908
22. Giancotti FG, Ruoslahti E (1999) Transduction – integrin signalling. *Science* 285:1028–1032
23. Giancotti FG (2000) Complexity and specificity of integrin signalling. *Nat Cell Biol* 2:E13–E14
24. Pierschbacher MD, Ruoslahti E (1984) Cell attachment activity of fibronectin can be duplicated by small synthetic fragments of the molecule. *Nature* 309(5963):30–33
25. Pierschbacher MD, Ruoslahti E (1984) Variants of the cell recognition site of fibronectin that retain attachment-promoting activity. *Proc Natl Acad Sci* 81:5985
26. Ruoslahti E, Pierschbacher MD (1987) New perspectives in cell-adhesion – RGD and integrins. *Science* 238:491–497
27. Ruoslahti E (1996) RGD and other recognition sequences for integrins. *Annu Rev Cell Dev Biol* 12:697–715
28. Wintermantel E, Ha SW (2003) Medizintechnik mit biokompatiblen Werkstoffen und Verfahren. Springer, Berlin
29. Hersel U, Kessler H (2003) RGD modified polymers: biomaterials for stimulated cell adhesion and beyond. *Biomaterials* 24:4385–4414
30. Yamada KM, Clark K (2002) Survival in three dimensions. *Science* 297:790–791
31. Andrade JD, Hlady V, Jeon SI (1996) Poly(ethylene oxide) and protein resistance – principles, problems, and possibilities. *Adv Chem Ser* 248:51–59
32. Horbett TA, Brash JL (1995) Proteins at interfaces II: fundamentals and application. *Adv Symp Ser* 602. American Chemical Society, Washington
33. Lanza RP, Langer R, Vacanti V (eds) (1997) Principles of tissue engineering, 2nd edn. Academic, San Diego
34. Ballauff M (2007) Spherical polyelectrolyte brushes. *Progr Polym Sci* 32:1135–1151
35. Römpf H, Falbe J, Regnitz M (1995) Römpf Chemie Lexikon. Thieme, Stuttgart
36. Frazier RA, Matthijs G, Davies MC et al (2000) Characterization of protein-resistant dextran monolayers. *Biomaterials* 21:957–966
37. Rabinow BE, Ding YS, Qin C et al (1994) Biomaterials with permanent hydrophilic surfaces and low-protein adsorption properties. *J Biomater Sci Polym Ed* 6:91–109

38. Lehmann T, R  he J (1999) Polyethyloxazoline monolayers for polymer supported biomembrane models. *Macromol Symp* 142:1–12
39. W  rz A, Berchthold B, Kandler S et al (2007) Tailormade surfaces for a guided adhesion and outgrowth of cells. *MikroSystemTechnik Kongress 2007 Dresden*
40. Petersen S, Loschonsky S, Prucker O et al (2009) Cell micro-arrays from surface-attached peptide-polymer monolayers. *Physica Status Solidi A* 206(3):468–473
41. Siegers C, Biesalski M, Haag R (2004) Self-assembled monolayers of dentritic polyglycerol derivatives on gold that resist the adsorption of proteins. *Chem Eur J* 10:2831–2838
42. Harris JM, Zalipsky S (1987) Poly(ethylene glycol): chemistry and biological applications. American Chemical Society, Washington
43. Jenney CR, Anderson JM (1999) Effects of surface-coupled polyethylene oxide in human macrophage adhesion and foreign body giant cell formation in vitro. *J Biomed Mater Res* 44:206–216
44. Jeon SI, Lee JH, Andrade JD et al (1991) Protein surface interactions in the presence of poly(ethylene oxide). 1. Simplified theory. *J Colloids Interf Sci* 142:149–158
45. Jeon SI, Andrade JD (1991) Protein surface interactions in the presence of poly(ethylene oxide). 2. Effect of protein size. *J Colloids Interf Sci* 142:159–166
46. Yang ZH, Galloway JA, Yu HU (1999) Protein interactions with poly(ethylene glycol) self-assembled monolayers on glass substrates: diffusion and adsorption. *Langmuir* 15: 8405–8411
47. Prime KL, Whitesides GM (1993) Adsorption of proteins onto surfaces containing end-attached oligo (ethylene oxide) – A model system using self-assembled monolayers. *J Am Chem Soc* 115:10714–10721
48. Ostuni E, Chapman RG, Holmlin RE, Takayama S, Whitesides GM et al (2001) A survey of structure-property relationships of surfaces that resist the adsorption of proteins. *Langmuir* 17:5605–5620
49. Nagaoka S, Mori Y, Takiuchi H et al. (1984) In: Shalaby SH, Hoffman AS, Ratner BD, Horbett TA et al (eds) (1984) *Polymers as biomaterials*. Plenum, New York, pp 361–374
50. Harder P, Grunze M, Dahint R et al (1998) Molecular conformation in oligo (ethylene glycol)-terminated self-assembled monolayers on gold and silver surfaces determines their ability to resist protein adsorption. *J Phys Chem B* 102:426–436
51. Matsuura H, Fukuhara K (1985) Conformational-analysis of poly(oxyethylene) chain in aqueous-solution as a hydrophilic moiety of non-ionic surfactants. *J Mol Struct* 126: 251–260
52. Wang RCL, Kreuzer HJ, Grunze M (1997) Molecular conformation and solvation of oligo(ethylen glycol)-terminated self-assembled monolayers and their resistance to protein adsorption. *J Phys Chem* 101:9767–9773
53. Chapman RG, Ostuni E, Takayama S et al (2000) Surveying for surfaces that resist the adsorption of proteins. *J Am Chem Soc* 122:8303–8304
54. Luk Y-Y, Kato M, Mrksich M (2000) Self-assembled monolayers of alkanethiolates presenting mannitol groups are inert to protein adsorption and cell attachment. *Langmuir* 16:9604–9608
55. Chapman RG, Ostuni E, Liang ME et al (2001) Polymeric thin films that resist the adsorption of proteins and the adhesion of bacteria. *Langmuir* 17:1225–1233
56. Advincula RC, Brittain WJ, Caster KC, R  he J (eds) (2004) *Polymer brushes: synthesis, characterization and applications*. Wiley, UK
57. Barbey R, Lavanant L, Paripovic D et al (2009) Polymer brushes via surface-initiated controlled radical polymerization: synthesis, characterization, properties, and applications. *Chem Rev* 109:5437–5527
58. Szleifer I, Carignano MA (2000) Tethered polymer layers: phase transitions and reduction of protein adsorption. *Rapid Commun* 21:423–448
59. Fristrup CJ, Jankova K, Hvilsted S (2009) Surface-initiated radical polymerization – a technique to develop biofunctional coatings. *Soft Matter* 23:4623–4634
60. Peppas NA, Huang Y, Torres-Lugo M et al (2000) Physicochemical foundations and structural design of hydrogels in medicine and biology. *Annu Rev Biomed Eng* 2:9–29

61. Park JH, Bae YH (2002) Hydrogels based on poly(ethylene oxide) and poly(tetramethylene oxide) or poly(dimethylsiloxane): synthesis, characterization, in vitro protein adsorption and platelet adhesion. *Biomaterials* 23:1797–1808
62. Haynes CA, Norde W (1995) Structures and stabilities of adsorbed protein of colloid and interface. *Science* 169(2):313–328
63. Giacomelli CE, Norde W (2001) The adsorption-desorption cycle. Reversibility of the BSA-silica system. *J Colloids Interf Sci* 233(2):234–240
64. Norde W, Giacomelli CE (1999) Conformational changes in proteins at interfaces: from solution to the interface, and back. *Macromol Symp* 145:125–136
65. Norde W, Giacomelli CE (2000) BSA structural changes during homomolecular exchange between the adsorbed and the dissolved states. *J Biotechnol* 79(3):259–268
66. Steele JG, Dalton BA, Johnson G et al (1993) Polystyrene chemistry affects vitronectin activity – an explanation for cell attachment to tissue-culture polystyrene but not to unmodified polystyrene. *J Biomed Mater Res* 27(7):927–940
67. Lewandowska K, Balachander N, Sukenik CN et al (1989) Modulation of fibronectin adhesive functions for fibroblasts and neural cells by chemically derivatized substrata. *J Cell Physiol* 141(2):334–345
68. Grinnell F, Feld MK (1981) Adsorption characteristics of plasma fibronectin in relationship to biological-activity. *J Biomed Mater Res* 15:363–381
69. Liu LY, Chen SF, Giachelli CM et al (2005) Controlling osteopontin orientation on surfaces to modulate endothelial cell adhesion. *J Biomed Mater Res A* 74A(1):23–31
70. Taubenberger A, Woodruff MA, Bai H F et al (2010) The effect of unlocking RGD-motifs in collagen I on pre-osteoblast adhesion and differentiation. *Biomaterials* 31:2827–2835
71. Egles C, Shamis Y, Mauney JR et al (2008) Denatured collagen modulates the phenotype of normal and wounded human skin equivalents. *J Invest Dermatol* 128:1830–1837
72. Sivaraman B, Latour RA (2010) The adherence of platelets to adsorbed albumin by receptor-mediated recognition of binding sites exposed by adsorption-induced unfolding. *Biomaterials* 31:1036–1044
73. Horbett TA (2003) Biological activity of adsorbed proteins. In: Malmsten M (ed) *Biopolymers at interfaces*, 2nd edn. Marcel Dekker, New York
74. Horbett TA (1994) The role of adsorbed proteins in animal-cell adhesion. *Colloids Surf B Biointerf* 2(1–3):225–240
75. Fabriziushoman DJ, Cooper SL (1991) Competitive adsorption of vitronectin with albumin, fibrinogen, and fibronectin on polymeric biomaterials. *J Biomed Mater Res* 25(8):953–971
76. Horbett TA (1996) Proteins: structure, properties, and adsorption to surfaces. In: Ratner BD, Hoffman AS, Schoen FJ, Lemons JE et al (eds) *Biomaterials science*. Academic, San Diego
77. Slack SM, Horbett TA (1988) Physicochemical and biochemical aspects of fibrinogen adsorption from plasma and binary protein solutions onto polyethylene and glass. *J Colloids Interf Sci* 124(2):535–551
78. Bale MD, Wohlfahrt LA, Mosher DF et al (1989) Identification of vitronectin as a major plasma-protein adsorbed on polymer surfaces of different copolymer composition. *Blood* 74(8):2698–2706
79. Green RJ, Davies MC, Roberts CJ et al (1999) Competitive protein adsorption as observed by surface plasmon resonance. *Biomaterials* 20(4):385–391
80. Vroman L, Adams AL (1986) Adsorption of proteins out of plasma and solutions in narrow spaces. *J Colloids Interf Sci* 111(2):391–402
81. Wertz CF, Santore MM (1999) Adsorption and relaxation kinetics of albumin and fibrinogen on hydrophobic surfaces: single-species and competitive behavior. *Langmuir* 15(26):8884–8894
82. Slack SM, Horbett TA (1995) The Vroman effect – a critical review. *Proteins Interf Li* 602:112–128
83. Jung SY, Lim SM, Albertorio F et al (2003) The Vroman effect: a molecular level description of fibrinogen displacement. *J Am Chem Soc* 125(42):12782–12786
84. Krishnan A, Siedlecki CA, Vogler EA (2004) Mixology of protein solutions and the Vroman effect. *Langmuir* 20(12):5071–5078



85. Brown LF, Dubin D, Lavigne L et al (1993) Macrophages and fibroblasts express embryonic fibronectins during cutaneous wound-healing. *Am J Pathol* 142(3):793–801
86. Werb Z (1997) ECM and cell surface proteolysis: regulating cellular ecology. *Cell* 91(4):439–442
87. Grinnell F (1986) Focal adhesion sites and the removal of substratum-bound fibronectin. *J Cell Biol* 103(6):2697–2706
88. Nelson CM, Raghavan S, Tan JL et al (2003) Degradation of micropatterned surfaces by cell-dependent and -independent processes. *Langmuir* 19(5):1493–1499
89. Fink J, Thery M, Azioune A et al (2007) Comparative study and improvement of current cell micro-patterning techniques. *Lab on a Chip* 7(6):672–680
90. Ito Y, Nogawa M, Taheda M et al (2005) Photo-reactive polyvinylalcohol for photo-immobilized microarray. *Biomaterials* 26(2):211–216
91. Wilson CJ, Clegg RE, Leawesley DI et al (2005) Mediation of biomaterial-cell interactions by adsorbed proteins: a review. *Tissue Eng* 11(1–2):1–18
92. Ostuni E, Kane R, Chen CS et al (2000) Patterning mammalian cells using elastomeric membranes. *Langmuir* 16(20):7811–7819
93. Frimat J-P, Menne H, Michels A et al (2009) Plasma stencilling methods for cell patterning. *Anal Bioanal Chem* 395(3):601–609
94. Underwood PA, Steele JG, Dalton BA (1993) Effects of polystyrene surface-chemistry on the biological-activity of solid-phase fibronectin and vitronectin, analyzed with monoclonal-antibodies. *J Cell Sci* 104:793–803
95. Curtis ASG (1984) The competitive effects of serum-proteins on cell-adhesion. *J Cell Sci* 71:17–35
96. Tourovskaia A, Barber T, Wickes BT et al (2003) Micropatterns of chemisorbed cell adhesion-repellent films using oxygen plasma etching and elastomeric masks. *Langmuir* 19(11): 4754–4764
97. Detrait E, Lhoest JB, Knoops B et al (1998) Orientation of cell adhesion and growth on patterned heterogeneous polystyrene surface. *J Neurosci Methods* 84(1–2):193–204
98. Peterbauer T, Heitz J, Olbrich M et al (2006) Simple and versatile methods for the fabrication of arrays of live mammalian cells. *Lab on a Chip* 6(7):857–863
99. Chen CS, Mrksich M, Huang S et al (1998) Micropatterned surfaces for control of cell shape, position, and function. *Biotechnol Prog* 14(3):356–363
100. Singhvi R, Kumar A, Lopez GP et al (1994) Engineering cell-shape and function. *Science* 264(5159):696–698
101. Mrksich M, Dike LE, Tien J et al (1997) Using microcontact printing to pattern the attachment of mammalian cells to self-assembled monolayers of alkanethiolates on transparent films of gold and silver. *Exp Cell Res* 235(2):305–313
102. Iwanaga S, Akiyama Y, Kikuchi A et al (2005) Fabrication of a cell array on ultrathin hydrophilic polymer gels utilising electron beam irradiation and UV excimer laser ablation. *Biomaterials* 26(26):5395–5404
103. Pesen D, Heinz WF, Werbin JL et al (2007) Electron beam patterning of fibronectin nanodots that support focal adhesion formation. *Soft Matter* 3:1280–1284
104. Bouaidat S, Berendsen C, Thomsen P et al (2004) Micro patterning of cell and protein non-adhesive plasma polymerized coatings for biochip applications. *Lab on a Chip* 4(6):632–637
105. Chang WC, Sretavan DW (2008) Novel high-resolution micropatterning for neuron culture using polylysine adsorption on a cell repellent, plasma-polymerized background. *Langmuir* 24(22):13048–13057
106. Revzin A, Tompkins RG, Toner M (2003) Surface engineering with poly(ethylene glycol) photolithography to create high-density cell arrays on glass. *Langmuir* 19(23):9855–9862
107. Berchtold B (2005) Oberflächengebundene Polymernetzwerke zur Re-Endothelialisierung von porcinen Herzklappenbioprothesen. Department of Microsystems Engineering, Albert-Ludwigs-Universität, Freiburg, Germany
108. Prucker O, Naumann CA, Ruhe J et al (1999) Photochemical attachment of polymer films to solid surfaces via monolayers of benzophenone derivatives. *J Am Chem Soc* 121(38): 8766–8770

109. Worz A, Berchtold B, Kandler S (2007) Tailor-made surfaces for the guidance of neuronal cells. *Tissue Eng* 13:908–909
110. Chien HW, Chang ZY, Tsai WB (2009) Spatial control of cellular adhesion using photo-crosslinked micropatterned polyelectrolyte multilayer films. *Biomaterials* 30(12):2209–2218
111. Cimetta E, Pizzato S, Bollini S et al (2009) Production of arrays of cardiac and skeletal muscle myofibers by micropatterning techniques on a soft substrate. *Biomed Microdevices* 11(2):389–400
112. Ruiz A, Valsesia A, Bretagnol F et al (2007) Large-area protein nano-arrays patterned by soft lithography. *Nanotechnology* 18:1–6
113. McDevitt TC, Angello JC, Whitney ML et al (2002) In vitro generation of differentiated cardiac myofibers on micropatterned laminin surfaces. *J Biomed Mater Res* 60(3):472–479
114. McDevitt TC, Woodhouse KA, Hauschka SD et al (2003) Spatially organized layers of cardiomyocytes on biodegradable polyurethane films for myocardial repair. *J Biomed Mater Res A* 66A(3):586–595
115. Gasteier P, Reska A, Schulte P et al (2007) Surface grafting of PEO-based star-shaped molecules for bioanalytical and biomedical applications. *Macromol Biosci* 7:1010–1023
116. Ahmed WW, Wolfram T, Goldyn AM et al (2010) Myoblast morphology and organization on biochemically micro-patterned hydrogel coatings under cyclic mechanical strain. *Biomaterials* 31:250–258
117. Reska A, Gasteier P, Schulte P et al (2008) Ultrathin coatings with change in reactivity over time enable functional in vitro networks of insect neurons. *Adv Mater* 20:2751–2755
118. Folch A, Toner M (2000) Microengineering of cellular interactions. *Annu Rev Biomed Eng* 2:227–256
119. Delamarche E, Bernard A, Schmid H et al (1997) Patterned delivery of immunoglobulins to surfaces using microfluidic networks. *Science* 276(5313):779–781
120. Folch A, Toner M (1998) Cellular micropatterns on biocompatible materials. *Biotechnol Prog* 14(3):388–392
121. Cuvelier D, Rossier O, Bassereau P et al (2003) Micropatterned “adherent/repellent” glass surfaces for studying the spreading kinetics of individual red blood cells onto protein-decorated substrates. *Eur Biophys J Biophys Lett* 32(4):342–354
122. Zhu H, Snyder M (2003) Protein chip technology. *Curr Opin Chem Biol* 7(1):55–63
123. MacBeath G, Schreiber SL (2000) Printing proteins as microarrays for high-throughput function determination. *Science* 289(5485):1760–1763
124. Revzin A, Rajagopalan P, Tilles AW et al (2004) Designing a hepatocellular microenvironment with protein microarraying and poly(ethylene glycol) photolithography. *Langmuir* 20(8):2999–3005
125. Katz BZ, Zamir E, Bershadsky A et al (2000) Physical state of the extracellular matrix regulates the structure and molecular composition of cell-matrix adhesions. *Mol Biol Cell* 11(3):1047–1060
126. Pelham RJ, Wang YL (1998) Cell locomotion and focal adhesions are regulated by the mechanical properties of the substrate. *Biol Bull* 194(3):348–349
127. Choquet D, Felsenfeld d P, Sheetz MP (1997) Extracellular matrix rigidity causes strengthening of integrin-cytoskeleton linkages. *Cell* 88(1):39–48
128. Castel S, Pagan R, Mitjans F et al (2001) RGD peptides and monoclonal antibodies, antagonists of  $\alpha(v)$ -integrin, enter the cells by independent endocytic pathways. *Lab Invest* 81(12):1615–1626
129. Zamir E, Geiger B (2001) Molecular complexity and dynamics of cell-matrix adhesions. *J Cell Sci* 114(20):3583–3590
130. Memmo LM, McKeown-Longo P (1998) The  $\alpha v \beta 5$  integrin functions as an endocytic receptor for vitronectin. *J Cell Sci* 111:425–433
131. Gaebel K, Feuerstein IA (1991) Platelets process adsorbed protein – a morphological-study. *Biomaterials* 12(6):597–602
132. Tirrell M, Kokkoli E, Biesalski M (2002) The role of surface science in bioengineered materials. *Surf Sci* 500(1–3):61–83

133. Biesalski M, Tu R, Tirrell M (2005) Polymerized vesicles carrying molecular recognition sites. *Langmuir* 21:5663–5666
134. Biesalski M, Knaebel A, Tu R et al (2006) Cell adhesion on a polymerized peptide-amphiphile monolayer. *Biomaterials* 27(8):1259–1269
135. Loschonsky S, Shroff K, Wörz A et al (2008) Surface-attached PDMAA-GRGDSP hybrid polymer monolayers that promote the adhesion of living cells. *Biomacromolecules* 9: 543–552
136. Zhu J, Tang C, Kottke-Marchant K et al (2009) Design and synthesis of biomimetic hydrogel scaffolds with controlled organization of cyclic RGD peptides. *Bioconjug Chem* 20(2):333–339
137. Pakalns T, Haverstick KL, Fields GB et al (1999) Cellular recognition of synthetic peptide amphiphiles in self-assembled monolayer films. *Biomaterials* 20(23–24):2265–2279
138. Hirano Y, Okuno M, Hayashi T et al (1993) Cell-attachment activities of surface immobilized oligopeptides RGD, RGDS, RGDV, RGDV, and YIGSRIGR toward five cell-lines. *J Biomater Sci Polym Ed* 4(3):235–243
139. Mardilovich A, Craig JA, McCammon MQ et al (2006) Design of a novel fibronectin-mimetic peptide-amphiphile for functionalized biomaterials. *Langmuir* 22(7):3259–3264
140. Li FY, Redick SD, Erickson HP et al (2003) Force measurements of the  $\alpha(5)\beta(1)$  integrin-fibronectin interaction. *Biophys J* 84(2):1252–1262
141. Eisenberg JL, Piper JL, Mrksich M (2009) Using self-assembled monolayers to model cell adhesion to the 9th and 10th type III domains of fibronectin. *Langmuir* 25(24):13942–13951
142. Craig WS, Cheng S, Mullen DG et al (1995) Concept and progress in the development of RGD-containing peptide pharmaceuticals. *Biopolymer* 37(2):157–175
143. Beer JH, Springer KT, Collier BS (1992) Immobilized Arg-Gly-Asp (RGD) peptides of varying lengths as structural probes of the platelet glycoprotein-IIb/IIIa receptor. *Blood* 79(1):117–128
144. Kantele M, Schaffner P, Finsinger D et al (2000) Surface coating with cyclic RGD peptides stimulates osteoblast adhesion and proliferation as well as bone formation. *Chembiochem* 1(2):107–114
145. Massia SP, Hubbell JA (1991) An RGD spacing of 440 nm is sufficient for integrin  $\alpha$ -V- $\beta$ -3-mediated fibroblast spreading and 140 nm for focal contact and stress fiber formation. *J Cell Biol* 114(5):1089–1100
146. Maheshwari G, Brown G, Lauffenburger DA et al (2000) Cell adhesion and motility depend on nanoscale RGD clustering. *J Cell Sci* 113(10):1677–1686
147. Arnold M, Schwieder M, Blummel J et al (2009) Cell interactions with hierarchically structured nano-patterned adhesive surfaces. *Soft Matter* 5(1):72–77
148. Wolfram T, Spatz JP, Burgess RW (2008) Cell adhesion to agrin presented as a nanopatterned substrate is consistent with an interaction with the extracellular matrix and not transmembrane adhesion molecules. *BMC Cell Biol* 9:64
149. Arnold M, Cavalcanti-Adam EA, Glass R et al (2004) Activation of integrin function by nanopatterned adhesive interfaces. *Chemphyschem* 5:383–388
150. Ruoslahti E (1996) RGD and other recognition sequences for integrins. *Annu Rev Cell Dev Biol* 12:697–715
151. Kato R, Kaga C, Kunitatsu M et al (2006) Peptide array-based interaction assay of solid-bound peptides and anchorage-dependant cells and its effectiveness in cell-adhesive peptide design. *J Biosci Bioeng* 101(6):485–495
152. Gobin AS, West JL (2003) Val-ala-pro-gly, an elastin-derived non-integrin ligand: smooth muscle cell adhesion and specificity. *J Biomed Mat Res A* 67A(1):255–259
153. Hubbell JA, Massia SP, Desai NP et al (1991) Endothelial cell-selective materials for tissue engineering in the vascular graft via a new receptor. *Biotechnology* 9(6):568–572
154. Plouffe BD, Njoka DN, Harris J et al (2007) Peptide-mediated selective adhesion of smooth muscle and endothelial cells in microfluidic shear flow. *Langmuir* 23(9):5050–5055
155. Plouffe BD, Radisic M, Murthy SK (2008) Microfluidic depletion of endothelial cells, smooth muscle cells, and fibroblasts from heterogeneous suspensions. *Lab on a Chip* 8(3):462–472

156. Zhang SG, Yan L, Altman M et al (1999) Biological surface engineering: a simple system for cell pattern formation. *Biomaterials* 20(13):1213–1220
157. Takahashi H, Emoto K, Dubey M et al (2008) Imaging surface immobilization chemistry: correlation with cell patterning on non-adhesive hydrogel thin films. *Adv Funct Mater* 18(14):2079–2088
158. Dubey M, Emoto K, Cheng F et al (2009) Surface analysis of photolithographic patterns using ToF-SIMS and PCA. *Surf and Interface Anal* 41:645–652
159. Meyers SR, Khoo XJ, Huang X et al (2009) The development of peptide-based interfacial biomaterials for generating biological functionality on the surface of bioinert materials. *Biomaterials* 30(3):277–286
160. Gauvreau V, Laroche G (2005) Micropattern printing of adhesion, spreading, and migration peptides on poly(tetrafluoroethylene) films to promote endothelialization. *Bioconj Chem* 16(5):1088–1097
161. Monchaux E, Vermette P (2007) Bioactive microarrays immobilized on low-fouling surfaces to study specific endothelial cell adhesion. *Biomacromolecules* 8:3668–3673
162. Buxboim A, Ivanovska IL, Discher D (2010) Matrix elasticity, cytoskeletal forces and physics of the nucleus: how deeply do cells ‘feel’ outside and in? *J Cell Sci* 123:297–308
163. Montagne K, Komori K, Yang F et al (2009) A micropatterned cell array with an integrated oxygen-sensitive fluorescent membrane. *Photochem Photobiol Sci* 8(11):1529–1533
164. Komori K, Nada J, Nishikawa M et al (2009) Simultaneous evaluation of toxicities using a mammalian cell array chip prepared by photocatalytic lithography. *Anal Chim Acta* 653(2):222–227
165. Kikuchi K, Sumaru K, Eda Hiro JI et al (2009) Stepwise assembly of micropatterned cocultures using photoresponsive culture surfaces and its application to hepatic tissue arrays. *Biotechnol Bioeng* 103(3):552–561
166. Khetani SR, Bhatia SN (2008) Microscale culture of human liver cells for drug development. *Nat Biotechnol* 26(1):120–126
167. Wang L, Zhu J, Deng C et al (2008) An automatic and quantitative on-chip cell migration assay using self-assembled monolayers combined with real-time cellular impedance sensing. *Lab on a Chip* 8(6):872–878
168. Ochsner M, Dusseiller MR, Grandin HM et al (2007) Micro-well arrays for 3D shape control and high resolution analysis of single cells. *Lab on a Chip* 7(8):1074–1077
169. Shim HW, Lee JH, Hwang TS et al (2007) Patterning of proteins and cells on functionalized surfaces prepared by polyelectrolyte multilayers and micromolding in capillaries. *Biosens Bioelectron* 22(12):3188–3195
170. Rosenthal A, Macdonald A, Voldman J (2007) Cell patterning chip for controlling the stem cell microenvironment. *Biomaterials* 28(21):3208–3216
171. Ostuni E, chen CS, Ingber DE et al (2001) Selective deposition of proteins and cells in arrays of microwells. *Langmuir* 17(9):2828–2834
172. Ruiz A, Buzanska L, Gilliland D et al (2008) Micro-stamped surfaces for the patterned growth of neural stem cells. *Biomaterials* 29(36):4766–4774
173. Hatakeyama H, Kikuchi A, Yamato M et al (2007) Patterned biofunctional designs of thermoresponsive surfaces for spatiotemporally controlled cell adhesion, growth, and thermally induced detachment. *Biomaterials* 28(25):3632–3643
174. Moon JJ, Hahn MS, Kim I et al (2009) Micropatterning of poly(ethylene glycol) diacrylate hydrogels with biomolecules to regulate and guide endothelial morphogenesis. *Tissue Eng Part A* 15(3):579–585
175. Lee SH, Moon JJ, West JL (2008) Three-dimensional micropatterning of bioactive hydrogels via two-photon laser scanning photolithography for guided 3D cell migration. *Biomaterials* 29(20):2962–2968

Bioactive Surfaces

Boerner, H.; Lutz, J.-F. (Eds.)

2011, XII, 224 p., Hardcover

ISBN: 978-3-642-20154-7