

# Regularizing Soft Decision Trees

Olca Taner Yıldız and Ethem Alpaydın

**Abstract** Recently, we have proposed a new decision tree family called soft decision trees where a node chooses both its left and right children with different probabilities as given by a gating function, different from a hard decision node which chooses one of the two. In this paper, we extend the original algorithm by introducing local dimension reduction via  $L_1$  and  $L_2$  regularization for feature selection and smoother fitting. We compare our novel approach with the standard decision tree algorithms over 27 classification data sets. We see that both regularized versions have similar generalization ability with less complexity in terms of number of nodes, where  $L_2$  seems to work slightly better than  $L_1$ .

## 1 Introduction

A decision tree is an hierarchical structure made up of internal decision nodes and terminal leaves. For classification, the leaves carry the label of one of  $K$  classes. The input vector is composed of  $d$  attributes,  $x = [x_1, \dots, x_d]^T$ . Each decision node  $m$  implements function  $v_m(x)$  and chooses one of the children accordingly. Let  $F_m(x)$  be the output generated by the subtree whose root is  $m$  and in a binary tree, let  $F_m^L(x)$  and  $F_m^R(x)$  denote respectively its left and right children and  $v_m(x)$  hence has two outcomes:

$$F_m(x) = \begin{cases} F_m^L(x) & \text{if } v_m(x) > 0 \text{ / *true*/} \\ F_m^R(x) & \text{otherwise / *false*/} \end{cases} \quad (1)$$

---

O. T. Yıldız (✉)

Department of Computer Engineering, Işık University, 34980 Istanbul, Turkey  
e-mail: olcaytaner@isikun.edu.tr

E. Alpaydın

Department of Computer Engineering, Boğaziçi University, 34342 Istanbul, Turkey  
e-mail: alpaydin@boun.edu.tr

Given an input to classify, starting from the root node, one applies the function at each internal node and the input is forwarded to one of the two branches depending on the outcome. This process is repeated recursively until a leaf node is hit at which point the class label of the leaf constitutes the output. Depending on the model they assume for  $F_m(x)$ , decision trees are subcategorized into univariate decision trees [1], multivariate linear decision trees [2], multivariate nonlinear decision trees [3], and omnivariate decision trees [4].

In our recent work [5], we generalized decision trees and proposed soft decision trees. A node at a hard decision tree forwards the input to either its left or the right subtree, whereas a soft decision tree node utilizes a gating function to assign probabilities to its children and merges the decision of its children by these probabilities. That is, we follow all the paths to all the leaves and all the leaves contribute to the final decision but with different probabilities.

In this paper, we extend soft decision trees by adding a regularization term (linear for  $L_1$  regularization, quadratic for  $L_2$  regularization) to handle a localized dimensionality reduction in the nodes, since as we go deeper into the tree, the scope of a node becomes more localized. This paper is organized as follows: In Sect. 2, we briefly review the original soft tree algorithm. We give the details of our regularized version of the original approach in Sect. 3. We give our experimental results in Sect. 4 and conclude in Sect. 5.

## 2 Soft Decision Trees

As opposed to the (hard) decision mode which redirects instances to its left or right subtree depending on the node function  $F_m(x)$ , soft decision node redirects instances both to the left and right subtree with probabilities calculated by the gating function  $v_m(x)$ :

$$F_m(x) = F_m^L(x)v_m(x) + F_m^R(x)(1 - v_m(x)) \quad (2)$$

and to choose among two children, we take  $v_m(x) \in [0, 1]$  as the *sigmoid function*:

$$v_m(x) = \frac{1}{1 + \exp[-(w_m^T x + w_{m0})]} \quad (3)$$

Learning the tree is incremental and recursive, as with the hard decision tree. The algorithm starts with one node and fits a constant model. Then, as long as there is improvement, it replaces the leaf by a subtree. This involves optimizing the gating parameters and the values of its children leaf nodes by gradient-descent over an error function. The error function is cross-entropy for classification, and the final output of the tree is filtered through a sigmoid at the root to convert it to a probability:

$$E = r \log y + (1 - r) \log(1 - y)$$

### 3 Regularized Soft Decision Trees

In general, model selection problem in decision trees have two faces. On the one hand, keeping the node model fixed, one can delve into the optimization of the tree structure and use either pre or post-pruning techniques. On the other hand, one can try to solve the model selection problem at the node level and select one among  $L$  candidate models based on both complexity and performance [4].

Our approach in this paper falls into the second category and we use  $L_1$  and  $L_2$ -norm regularization techniques to combine the model complexity and error term into one single value. The function we want to minimize is

$$E_{L_1} = \frac{1-\lambda}{N} \sum_t (r^{(t)} \log y^{(t)} + (1-r^{(t)}) \log(1-y^{(t)})) + \frac{\lambda}{d} \sum_{i=0}^d |w_{mi}|$$

for  $L_1$  regularization, and

$$E_{L_2} = \frac{1-\lambda}{N} \sum_t (r^{(t)} \log y^{(t)} + (1-r^{(t)}) \log(1-y^{(t)})) + \frac{\lambda}{d} \sum_{i=0}^d w_{mi}^2$$

for  $L_2$  regularization, where  $1-\lambda$  and  $\lambda$  correspond to the weight factor of cross-entropy and model complexity respectively. From a Bayesian perspective,  $L_1$  and  $L_2$  regularization corresponds to Laplacian and Gaussian priors on  $w_{mi}$  and the equations above correspond to maximum a posteriori estimates.

In gradient-descent, we use the following update equations:

$$\begin{aligned} \alpha_m &= \prod_{p=m.parent}^{p!=root} \delta_{p,p.parent.left} v_p(x) + \delta_{p,p.parent.right} (1 - v_p(x)) \\ \frac{\partial E_{L_1}}{\partial w_{mi}} &= \frac{1-\lambda}{N} (r - y)(F_m^L(x) - F_m^R(x)) \alpha_m v_m(x)(1 - v_m(x)) x_i \\ &\quad + \frac{\text{sgn}(w_{mi})\lambda}{d} \quad (L_1) \\ \frac{\partial E_{L_2}}{\partial w_{mi}} &= \frac{1-\lambda}{N} (r - y)(F_m^L(x) - F_m^R(x)) \alpha_m v_m(x)(1 - v_m(x)) x_i + \frac{\lambda w_{mi}}{d} \quad (L_2) \end{aligned}$$

where  $\delta_{x,y}$  is the Kronecker delta and  $\text{sgn}(x)$  is the sign function.

### 4 Experiments

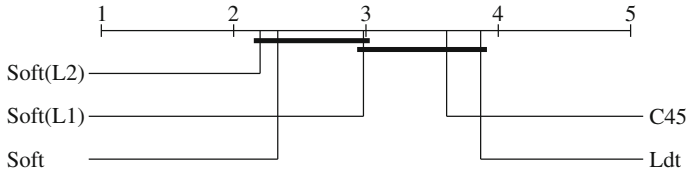
To compare the generalization error and model complexity of our regularized soft trees with both soft trees (without regularization) and hard C4.5 trees, we use 27 two-class data sets from UCI repository [6]. We also compare with a multivariate

**Table 1** On the classification data sets, the average error of soft, hard, linear discriminant trees (Ldt). Pairwise comparisons of error rate of soft and hard decision tree algorithms are shown in the second table

Dataset	Hard	Ldt	Soft	Soft( $L_1$ )	Soft( $L_2$ )
Acceptors	$16.1 \pm 2.0$	$9.6 \pm 0.8$	$8.7 \pm 0.7$	$7.5 \pm 0.3$	$7.3 \pm 0.3$
Artificial	$1.1 \pm 1.8$	$1.5 \pm 1.9$	$1.1 \pm 1.8$	$0.7 \pm 1.6$	$0.4 \pm 1.2$
Breast	$6.7 \pm 1.1$	$4.9 \pm 0.6$	$3.5 \pm 0.7$	$4.1 \pm 0.8$	$3.5 \pm 0.7$
Bupa	$38.6 \pm 4.1$	$39.1 \pm 3.4$	$39.7 \pm 4.2$	$41.4 \pm 3.0$	$39.0 \pm 2.4$
Donors	$7.7 \pm 0.4$	$5.4 \pm 0.3$	$5.7 \pm 0.4$	$5.6 \pm 0.3$	$5.5 \pm 0.3$
German	$29.9 \pm 0.0$	$25.8 \pm 2.0$	$24.0 \pm 3.0$	$25.9 \pm 2.4$	$24.3 \pm 1.4$
Haberman	$26.6 \pm 0.3$	$27.2 \pm 1.5$	$25.9 \pm 1.8$	$25.0 \pm 2.5$	$24.7 \pm 2.4$
Heart	$28.3 \pm 4.7$	$18.4 \pm 2.3$	$19.7 \pm 3.4$	$18.1 \pm 2.5$	$18.3 \pm 2.5$
Hepatitis	$22.1 \pm 4.4$	$20.4 \pm 2.9$	$20.2 \pm 2.4$	$20.4 \pm 4.2$	$19.0 \pm 3.6$
Ionosphere	$13.1 \pm 1.9$	$12.3 \pm 2.2$	$11.5 \pm 2.0$	$11.5 \pm 1.9$	$12.6 \pm 1.1$
Krvskp	$1.2 \pm 0.4$	$4.5 \pm 0.7$	$1.8 \pm 0.6$	$3.6 \pm 0.6$	$3.0 \pm 0.7$
Magic	$17.5 \pm 0.6$	$16.9 \pm 0.1$	$14.7 \pm 0.5$	$21.6 \pm 0.2$	$20.8 \pm 0.2$
Monks	$12.8 \pm 7.8$	$23.8 \pm 8.2$	$0.0 \pm 0.0$	$3.4 \pm 5.3$	$3.5 \pm 7.4$
Mushroom	$0.0 \pm 0.1$	$1.8 \pm 0.5$	$0.1 \pm 0.0$	$0.1 \pm 0.0$	$0.0 \pm 0.0$
Musk2	$5.5 \pm 0.6$	$6.4 \pm 0.3$	$4.3 \pm 0.7$	$6.3 \pm 0.7$	$5.7 \pm 0.7$
Parkinsons	$13.8 \pm 2.3$	$13.5 \pm 2.5$	$14.3 \pm 2.7$	$13.7 \pm 2.7$	$12.3 \pm 2.4$
Pima	$27.9 \pm 3.4$	$23.1 \pm 1.4$	$24.9 \pm 2.0$	$23.1 \pm 0.8$	$23.1 \pm 1.0$
Polyadenylation	$30.5 \pm 1.3$	$22.6 \pm 0.6$	$22.9 \pm 0.5$	$22.2 \pm 0.5$	$22.3 \pm 0.5$
Promoters	$26.1 \pm 9.9$	$34.4 \pm 9.4$	$15.3 \pm 6.7$	$13.1 \pm 7.6$	$16.7 \pm 9.3$
Ringnorm	$12.2 \pm 1.1$	$22.8 \pm 0.3$	$9.9 \pm 1.7$	$22.4 \pm 0.3$	$22.4 \pm 0.4$
Satellite47	$15.4 \pm 1.5$	$16.7 \pm 1.4$	$12.4 \pm 1.4$	$16.4 \pm 1.4$	$15.4 \pm 0.9$
Spambase	$9.9 \pm 0.7$	$10.1 \pm 0.7$	$7.5 \pm 0.5$	$8.2 \pm 0.3$	$7.6 \pm 0.3$
Spect	$19.1 \pm 2.8$	$20.1 \pm 2.4$	$19.6 \pm 2.4$	$16.9 \pm 2.6$	$16.6 \pm 1.8$
Tictactoe	$23.8 \pm 2.2$	$31.9 \pm 2.4$	$1.8 \pm 0.3$	$1.8 \pm 0.4$	$1.7 \pm 0.3$
Titanic	$21.8 \pm 0.5$	$22.4 \pm 0.4$	$21.5 \pm 0.2$	$21.6 \pm 0.3$	$22.1 \pm 0.2$
Twonorm	$17.0 \pm 0.7$	$2.0 \pm 0.1$	$2.1 \pm 0.2$	$2.1 \pm 0.2$	$2.1 \pm 0.2$
Vote	$5.2 \pm 0.7$	$6.7 \pm 2.6$	$5.1 \pm 0.9$	$6.7 \pm 0.9$	$5.6 \pm 1.1$
	Hard	Ldt	Soft	Soft( $L_1$ )	Soft( $L_2$ )
Hard		6	0	5	4
Ldt	5		0	1	1
Soft	9	11		5	4
Soft( $L_1$ )	7	4	1		0
Soft( $L_2$ )	8	4	1	2	

linear tree algorithm (Ldt) [7]. We first separate one third of the data set as the test set over which we evaluate the final performance. On the remaining two thirds, we apply  $5 \times 2$ -fold cross validation, which gives a total of 10 folds for each data set. We use parametric  $5 \times 2$  paired  $F$ -test [8] and nonparametric Nemenyi's test to compare algorithms.

Table 1 shows the average and standard deviation of errors of soft and hard decision trees. The table below it shows the pairwise comparison results of error rates—entry



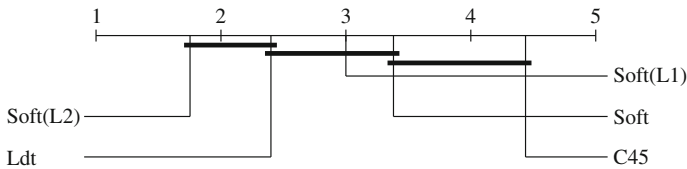
**Fig. 1** The result of post-hoc Nemenyi's test applied on the error rates of soft, hard, linear discriminant trees (*Ldt*)

( $i, j$ ) in this second table gives the number of datasets (out of 27) on which method  $i$  is statistically significantly better than method  $j$  with at least 95 % confidence using  $5 \times 2$  paired  $F$ -test. Figure 1 shows the result of post-hoc Nemenyi's test applied on the error rates of the algorithms.

We see that the soft tree and its extensions are significantly more accurate than both hard and linear discriminant trees. Soft tree variants are better than hard trees and *Ldt* on eight and six datasets respectively; hard trees are only better on three datasets and *Ldt* are better only on one dataset.  $L_2$  regularization is significantly better than  $L_1$  on two datasets. If we compare nonparametrically, on 18 datasets out of 27,  $L_2$  normalization has smaller error rate, whereas  $L_1$  has smaller error rate only on 9 datasets. Overall,  $L_2$  regularization is slightly better than  $L_1$  in terms of error rate ( $p$ -value = 0.06).

Table 2 shows the average and standard deviation of number of nodes of soft and hard decision trees. Again the table below shows the pairwise comparison results in terms of number of nodes. Figure 2 shows the result of post-hoc Nemenyi's test applied on the number of nodes of tree generated by the algorithms.

As expected, soft tree variants are simpler than hard trees. On the average, soft tree variants are significantly smaller than hard trees on 12 datasets, whereas hard trees are smaller only on one dataset. The results also show that regularization pays off. Regularized soft trees are simpler than the original soft trees on three datasets.  $L_1$  regularization is significantly better than  $L_2$  on one dataset according to  $5 \times 2$  paired  $F$ -test. If we compare nonparametrically, on 24 datasets out of 27,  $L_2$  regularization generates smaller trees than  $L_1$  whereas the opposite is true on only one dataset. We can conclude that  $L_2$  regularization leads to significantly smaller trees than  $L_1$  ( $p$ -value  $< 10^{-6}$ ).



**Fig. 2** The result of post-hoc Nemenyi's test applied on the number of nodes of trees generated by soft, hard, linear discriminant trees (*Ldt*)

**Table 2** On the classification data sets, the average number of decision nodes of soft, hard, linear discriminant trees (Ldt). Pairwise comparisons are shown in the second table

Dataset	Hard	Ldt	Soft	Soft( $L_1$ )	Soft( $L_2$ )
Acceptors	$7.1 \pm 6.9$	$1.1 \pm 0.3$	$7.0 \pm 3.9$	$4.0 \pm 1.4$	$2.2 \pm 0.8$
Artificial	$4.4 \pm 1.0$	$2.0 \pm 0.5$	$1.0 \pm 0.0$	$1.0 \pm 0.0$	$1.0 \pm 0.0$
Breast	$4.1 \pm 2.2$	$1.6 \pm 0.7$	$1.3 \pm 0.5$	$1.7 \pm 0.7$	$1.3 \pm 0.5$
Bupa	$5.4 \pm 3.7$	$1.7 \pm 0.7$	$4.0 \pm 2.3$	$3.5 \pm 1.2$	$2.4 \pm 0.8$
Donors	$21.0 \pm 3.7$	$3.7 \pm 1.9$	$6.4 \pm 3.2$	$3.2 \pm 1.0$	$1.8 \pm 0.9$
German	$0.0 \pm 0.0$	$3.1 \pm 3.5$	$4.1 \pm 2.0$	$4.1 \pm 1.8$	$1.7 \pm 0.5$
Haberman	$1.0 \pm 3.2$	$1.2 \pm 1.8$	$2.0 \pm 1.6$	$2.5 \pm 1.1$	$1.2 \pm 1.0$
Heart	$3.5 \pm 2.7$	$1.0 \pm 0.0$	$1.6 \pm 0.8$	$1.7 \pm 0.8$	$1.2 \pm 0.4$
Hepatitis	$0.7 \pm 0.9$	$0.9 \pm 0.6$	$2.0 \pm 0.8$	$1.8 \pm 0.9$	$1.2 \pm 0.4$
Ionosphere	$3.8 \pm 1.9$	$2.2 \pm 0.8$	$2.5 \pm 1.4$	$2.1 \pm 1.4$	$1.5 \pm 0.8$
Krvskp	$23.7 \pm 4.2$	$6.2 \pm 2.9$	$6.8 \pm 2.5$	$3.5 \pm 1.2$	$2.7 \pm 1.5$
Magic	$30.1 \pm 16.5$	$19.4 \pm 8.1$	$26.4 \pm 6.1$	$5.3 \pm 1.4$	$2.5 \pm 0.7$
Monks	$11.2 \pm 2.4$	$3.5 \pm 3.3$	$3.0 \pm 0.0$	$4.8 \pm 1.8$	$3.5 \pm 1.4$
Mushroom	$4.9 \pm 0.3$	$10.9 \pm 2.5$	$1.0 \pm 0.0$	$1.3 \pm 0.7$	$1.0 \pm 0.0$
Musk2	$28.5 \pm 7.0$	$6.8 \pm 3.8$	$16.5 \pm 4.0$	$7.4 \pm 4.0$	$4.7 \pm 3.0$
Parkinsons	$3.3 \pm 1.7$	$1.2 \pm 0.4$	$3.6 \pm 1.4$	$1.8 \pm 0.8$	$1.4 \pm 0.5$
Polyadenylation	$22.5 \pm 18.4$	$2.2 \pm 2.4$	$8.9 \pm 3.6$	$5.5 \pm 2.7$	$3.1 \pm 2.5$
Pima	$3.8 \pm 2.6$	$2.2 \pm 1.2$	$3.4 \pm 2.4$	$2.4 \pm 1.0$	$1.7 \pm 0.8$
Promoters	$2.0 \pm 1.3$	$0.8 \pm 0.4$	$1.4 \pm 0.5$	$1.9 \pm 0.7$	$1.5 \pm 0.5$
Ringnorm	$45.7 \pm 5.2$	$1.3 \pm 0.5$	$39.9 \pm 7.2$	$2.8 \pm 0.9$	$2.5 \pm 1.2$
Satellite47	$11.9 \pm 4.5$	$4.0 \pm 1.9$	$12.7 \pm 4.3$	$5.6 \pm 3.1$	$3.6 \pm 2.3$
Spambase	$20.3 \pm 8.4$	$6.0 \pm 2.7$	$5.5 \pm 2.1$	$4.9 \pm 2.0$	$3.1 \pm 1.4$
Spect	$5.2 \pm 5.8$	$1.1 \pm 1.6$	$1.4 \pm 1.3$	$1.8 \pm 0.6$	$1.3 \pm 0.5$
Tictactoe	$22.2 \pm 6.8$	$6.2 \pm 3.4$	$1.3 \pm 0.5$	$1.2 \pm 0.4$	$1.1 \pm 0.3$
Titanic	$4.2 \pm 0.6$	$1.7 \pm 0.5$	$1.1 \pm 0.3$	$1.3 \pm 0.5$	$1.3 \pm 0.5$
Twonorm	$79.9 \pm 8.0$	$1.1 \pm 0.3$	$3.1 \pm 1.2$	$1.9 \pm 0.6$	$2.2 \pm 1.1$
Vote	$2.9 \pm 1.7$	$1.8 \pm 0.9$	$1.7 \pm 0.7$	$1.6 \pm 0.5$	$1.4 \pm 0.5$
	Hard	Ldt	Soft	Soft( $L_1$ )	Soft( $L_2$ )
Hard		0	1	1	1
Ldt	11		4	2	0
Soft	10	2		1	0
Soft( $L_1$ )	12	3	2		0
Soft( $L_2$ )	13	4	4	1	

## 5 Conclusions

We extend the soft decision tree model by adding  $L_1$  and  $L_2$  regularization to penalize unnecessary complexity. The extended model is evaluated on 27 classification data sets. We see that both versions improve accuracy slightly and decrease complexity significantly; overall  $L_2$  regularization seems to work slightly better than  $L_1$ .

## References

1. Quinlan JR (1993) C4.5: programs for machine learning. Morgan Kaufmann, San Mateo, CA
2. Murthy SK, Kasif S, Salzberg S (1994) A system for induction of oblique decision trees. *J Artif Intell Res* 2:1–32
3. Guo H, Gelfand SB (1992) Classification trees with neural network feature extraction. *IEEE Trans Neural Netw* 3:923–933
4. Yıldız OT, Alpaydın E (2001) Omnivariate decision trees. *IEEE Trans Neural Netw* 12(6):1539–1546
5. Irsoy O, Yildiz OT, Alpaydın E (2012) Soft decision trees. In: *Proceedings of the international conference on pattern recognition*, Tsukuba, Japan, pp 1819–1822
6. Blake C, Merz C (2000) UCI repository of machine learning databases
7. Yıldız OT, Alpaydın E (2005) Linear discriminant trees. *Int J Pattern Recogn Artif Intell* 19(3):323–353
8. Alpaydın E (1999) Combined  $5 \times 2$  cv F test for comparing supervised classification learning classifiers. *Neural Comput* 11:1975–1982

Information Sciences and Systems 2013

Proceedings of the 28th International Symposium on  
Computer and Information Sciences

Gelenbe, E.; Lent, R. (Eds.)

2013, XIII, 440 p. 116 illus., 66 illus. in color., Hardcover

ISBN: 978-3-319-01603-0