

# Chapter 2

## Treatment of Stroke

Douglas J. Cook and Michael Tymianski

### Introduction

Stroke is defined by the World Health Organization (WHO) as “rapidly developing clinical signs of focal (or global) disturbance of cerebral function, with symptoms lasting 24 h or longer or leading to death, with no apparent cause other than that of vascular origin” [1]. Therefore, stroke may be the result of an ischemic or hemorrhagic etiology. In either case there is a “core” area of immediate cell death related to the primary insult surrounded by a zone of viable but at-risk tissue. In the case of ischemic stroke the core is defined as a severely hypoperfused region with blood flow estimated to be less than 8 mL/100 g tissue/min [2]. The core is surrounded by a zone of tissue that suffers from critically low blood flow estimated to be between 8 and 20 mL/100 g tissue/min known as the “penumbra.” With continued ischemia the penumbra goes on to die [2]. In the case of hemorrhagic stroke, the core area comprises tissue that is destroyed immediately by shear force and mass effect relating to the hemorrhage [3]. The surrounding tissue probably does not have impaired blood flow as in ischemic stroke [4], but is at risk of further damage if the hematoma expands or re-bleeds and creates further shear force or mass effect [5].

The common aim of stroke treatment is the protection of tissue at risk. This is generally achieved by restoring blood flow in ischemic stroke or by preventing hematoma expansion from re-bleeding or swelling in hemorrhagic stroke. Therefore, the treatment employed in stroke cases varies widely between ischemic and hemorrhagic etiologies and will be discussed separately in this chapter.

---

D.J. Cook, M.D.

Department of Neurosurgery, Lucile Packard Children’s Hospital,  
Stanford Hospital and Clinics, Stanford, CA, USA

M. Tymianski, M.D., Ph.D., F.R.C.S.C. (✉)

Department of Neurosurgery, Toronto Western Hospital, Toronto, ON, Canada  
e-mail: mike\_t@uhnres.utoronto.ca

## **Treatment of Ischemic Stroke**

Ischemic stroke results from a lack of blood flow to brain tissue secondary to severe hypoperfusion in a vascular territory due to proximal occlusion of a cerebral artery or complete occlusion of an end artery [6]. Common causes for arterial occlusion include emboli originating from proximal in the arterial system as in carotid artery stenosis, atrial fibrillation, and valvular heart disease; cerebral arterial thrombosis due to arterial dissections, critical stenoses and atherosclerotic plaque rupture or hypercoagulable state; and from inflammatory or idiopathic processes that lead to vessel occlusion such as moyamoya disease and central nervous system vasculitides.

As previously discussed, ischemic stroke results in the formation of core and penumbral regions that represent dead and at-risk tissue, respectively. If untreated, the penumbral zone progresses to tissue death, becoming core tissue. Therefore, there is a positive correlation between time to reperfusion, tissue salvaged by reperfusion therapy, and patient outcome. Saver quantified the “Time is Brain” concept, noting that for a typical large artery stroke, 1.9 million neurons die each minute, emphasizing the urgency to achieve recanalization and reperfusion after stroke onset [7]. The time window for recanalization varies based on the methodology utilized (intravenous or intra-arterial thrombolysis, mechanical thrombectomy, or combination thereof), the vascular distribution involved, and etiology of the occlusion.

## ***Acute Medical Management of Ischemic Stroke***

The early management of stroke has been reviewed and summarized in the American Heart Association (AHA) guidelines on the early management of acute ischemic stroke [8]. In the acute phase, the guidelines focus on the evaluation and optimization of airway and ventilation, blood pressure, blood sugar, and avoidance of hyperthermia. In patients who are obtunded and are at risk of airway obstruction or in patients with lower cranial nerve deficits that elevate the risk of obstruction or aspiration, endotracheal intubation may be required to protect the airway and avoid hypoxia. The requirement for intubation must be weighed against the risk of ventilator acquired pneumonia, a complication estimated to occur in 21 % of intubated stroke patients and associated with higher mortality and worsened functional outcome [9]. The AHA guidelines recommend the avoidance of hypoxia in all stroke patients by maintaining an oxygen saturation  $\geq 92$  % with supplemental oxygen as required.

Both hypotension and hypertension during the early management of ischemic stroke are independent predictors of worsened neurological outcome [10, 11]. Hypertension is associated with an increased risk of hemorrhagic conversion that is further elevated with thrombolysis [12]. The AHA guidelines suggest a cautious

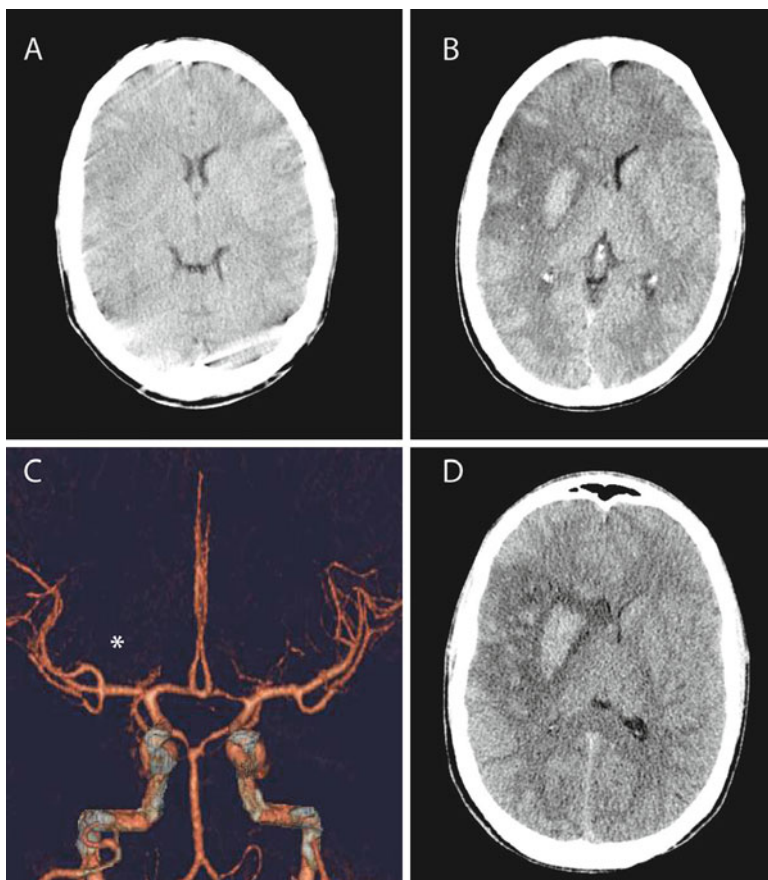
approach to the treatment of hypertension in patients not proceeding to recanalization therapies, recommending that hypertension be treated in patients with other medical indications for treatment or a reduction of 15 % in patients who present with systolic pressure  $>220$  mmHg or diastolic pressure  $>120$  mmHg. In patients proceeding to intravenous thrombolysis or other recanalization therapies, the guidelines recommend treating hypertension to reduce systolic pressure to  $\leq 185$  mmHg or diastolic pressure  $\leq 110$  mmHg before initiating thrombolysis.

Systemic hypotension results in a decline in cerebral perfusion pressure and theoretically results in decreased collateral perfusion and increased core volume during ischemic stroke [13]. The AHA guidelines recommend investigations to identify the cause of hypotension where baseline systolic blood pressure is  $<100$  mmHg or diastolic pressure is  $<70$  mmHg. The correction of hypotension due to hypovolemia and cardiac arrhythmia using volume expansion and or vasopressors is recommended; however, induced hypertension or hypervolemia as a form of treatment are not suggested.

Fever is an independent predictor of worsened neurological outcome following stroke probably related to increased metabolic demands and depleted energy stores [14]. Reduction of fever should be achieved by treating the source of fever and by administering antipyretic drugs such as acetaminophen. While hypothermia has been shown to improve stroke outcome in animal models, active cooling of stroke patients has not proven effective in clinical trials and is not recommended outside of study protocols [15].

Both hypoglycemia and hyperglycemia should be avoided in the acute management of stroke. Hypoglycemia may result in neurologic findings that mimic stroke or in some cases result in medical complications such as seizures that are deleterious to outcome following stroke [16]. Prolonged hyperglycemia after the onset of stroke results in worsened functional outcome [17]. The AHA guidelines recommend treatment of hyperglycemia with insulin to achieve a blood sugar of 140–185 mg/dL.

Early imaging in acute ischemic stroke is critical to drive treatment decisions (see Chap. 14 for more detail). A plain computed tomography (CT) scan is recommended prior to initiating therapy, especially thrombolytics, to rule out hemorrhage or tumor. Additional imaging to visualize vessel patency or to estimate tissue perfusion can be obtained in the acute phase of stroke management and may have prognostic significance [18, 19]. Perfusion imaging may be obtained with dynamic contrast-enhanced CT or magnetic resonance imaging (MRI) scanning and can be used to approximate cerebral blood flow, mean transit time, and time to peak that can be used to estimate the relative size of the stroke core and penumbra within the perfusion deficit. MRI diffusion-weighted imaging (DWI) can be used to identify completed stroke and for the identification of penumbra as the zone of tissue in the perfusion–diffusion mismatch. However, additional imaging should not delay the administration of thrombolytics.



**Fig. 2.1** Intravenous recombinant tissue plasminogen activator (rtPA) for acute ischemic stroke. This 58-year-old man presented to the emergency department 3.5 h after the acute onset left hemiplegia. **(a)** Initial computed tomography (CT) scan was interpreted as having no hemorrhage and evidence of early right middle cerebral artery (MCA) distribution ischemic changes. Intravenous rtPA was administered without neurologic improvement. **(b)** Eight hours after administration of rtPA the patient had a decreased level of consciousness and underwent repeat CT scan demonstrating early hemorrhage in the putamen ipsilateral to the stroke. **(c)** CT angiography obtained at that revealed a patent right M2 branch with absent flow in the lenticulostriate arteries on the right side (*asterisk*). **(d)** Twenty-four hours after presentation, a plain CT was obtained that demonstrated extension of hemorrhage and increased stroke and peri-hematoma edema resulting in midline shift

### *Intravenous Thrombolysis*

Intravenous thrombolysis for acute ischemic stroke has become standard practice in select cases (Fig. 2.1). The National Institute of Neurological Disorders and Stroke (NINDS) trial, in which 624 patients with acute ischemic stroke presenting to hospital within 3 h of stroke onset were randomized to 0.9 mg/kg (maximum dose 90 mg)

intravenous recombinant tissue plasminogen activator (rtPA) vs. placebo, was the first to show a benefit of thrombolysis for stroke [20]. This study demonstrated that rtPA administration resulted in favorable functional outcomes being reached in 31–50 % of rtPA-treated patients compared to 20–38 % of placebo-treated patients at 90 days following stroke and persisting at 1 year [20, 21]. The mortality rate between groups was not significantly different (17 % vs. 20 % at 90 days); however, the rate of symptomatic hemorrhagic conversion was greater in the rtPA group (0.6 % vs. 6.4 %), (Fig. 2.1b, d). Close monitoring of neurological conditions and vital signs is required after administration of rtPA in order to detect hemorrhagic complications, reactive angioedema, and airway compromise.

Given the short window in which rtPA therapy is initiated, there are a limited number of cases that meet the inclusion criteria for thrombolytic therapy. The number of cases that are eligible for rtPA therapy is further diminished by contraindications as rtPA cannot be used in cases with evidence of intracranial hemorrhage, clinical evidence of subarachnoid hemorrhage (SAH), active internal bleeding, known bleeding diathesis with elevated prothrombin time or international normalized ratio (INR), intracranial surgery within 3 months of presentation, uncontrolled hypertension (systolic >185 mmHg, diastolic >110 mmHg), history of intracranial hemorrhage, and/or known aneurysm or arteriovenous malformation.

The use of rtPA between 3 and 4.5 h after stroke onset was studied by the European Cooperative Acute Stroke Study using the same dosing regimen as in the NINDS trial [22]. This trial demonstrated a modest but significant improvement in functional outcomes with a significant associated increase in symptomatic intracranial hemorrhage in rtPA-treated patients; however, there was no difference in mortality between treatment groups. This evidence supports the extension of the therapeutic window to initiate intravenous thrombolytic therapy to 4.5 h following stroke onset.

Other promising pharmacological thrombolytic therapies are currently being explored for stroke thrombolysis. Desmoteplase is a fibrin-specific thrombolytic agent based on the anti-hemostatic component of the saliva of the vampire bat. The Desmoteplase in Acute Stroke trial part 2 (DIAS-2) utilized this thrombolytic agent in patients between 3 and 9 h following stroke onset with a demonstrated ischemic penumbra depicted by a diffusion–perfusion-weighted imaging mismatch on MRI [23]. This study demonstrated neither an improvement in functional status nor an increase in treatment-related hemorrhage or mortality; although there was an increase in delayed and non-neurological deaths in the treatment arm. Desmoteplase will be further studied in two subsequent trials (DIAS-3 and DIAS-4) initiated in 2009. Tenecteplase is a promising thrombolytic agent based on rtPA with modifications in the rtPA amino acid sequence that increase fibrin selectivity, increase half-life, and decrease the risk of hemorrhage [24]. Tenecteplase has undergone early investigation in safety and dose finding studies and is presently being evaluated in a Phase II trial comparing it against alteplase (rtPA) for acute ischemic stroke administered within 4.5 h of stroke onset (ATTEST trial, NCT01472926) [25].

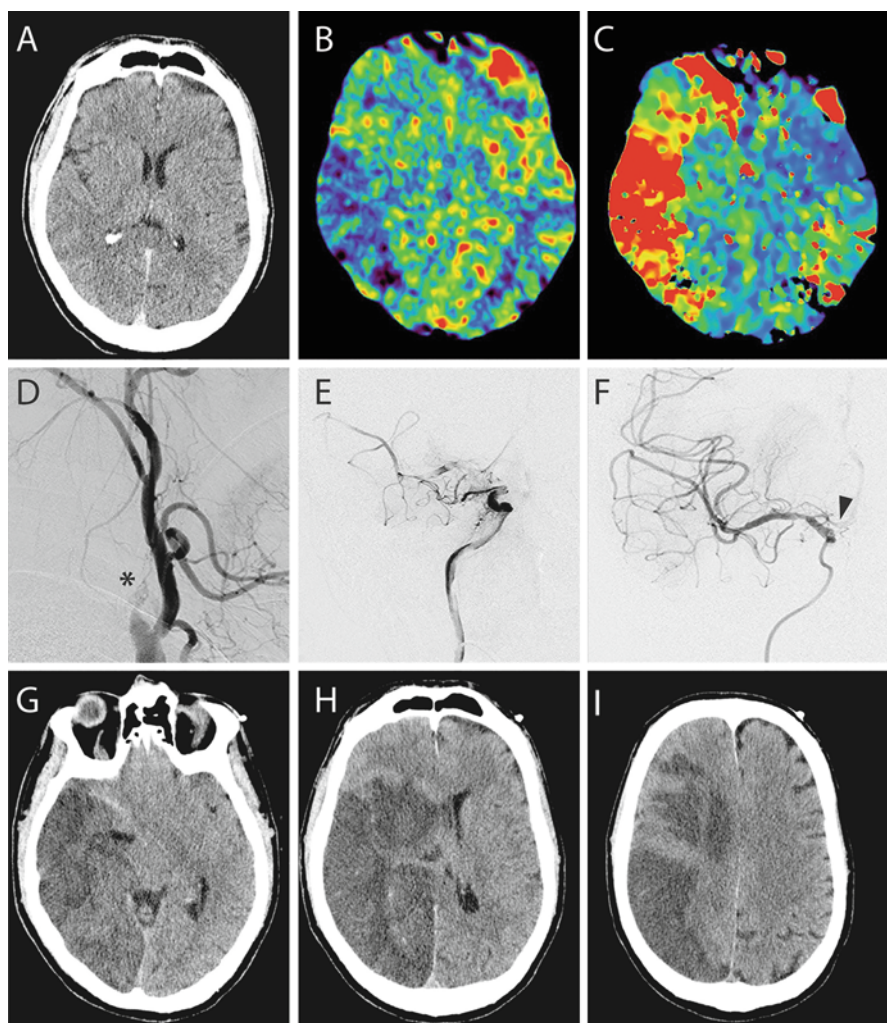
### ***Intra-arterial Thrombolysis and Mechanical Thrombolysis/Thrombectomy***

Intra-arterial thrombolysis is delivered through an endovascular catheter proximal to the site of arterial occlusion or from within the thrombus (Fig. 2.2). The main advantage of intra-arterial thrombolysis is that an elevated dose of thrombolytic agent can be delivered at the site of occlusion while reducing the systemic dose of drug compared to intravenous therapy. Intra-arterial therapy was effective when delivered up to 6 h following stroke onset, hence it may be utilized in patients who present outside of the 4.5-h window for intravenous rtPA therapy. However, this technique requires an interventional neuroradiology team to place the catheter in the occluded arterial branch prior to thrombolysis, potentially delaying therapy onset. No trial has directly compared intravenous and intra-arterial therapy to date.

The evidence supporting intra-arterial therapy includes two Phase III randomized controlled trials, the North American Prolyse in Acute Cerebral Thromboembolism study part II (PROACT-II) and the Japanese Middle Cerebral Artery Embolism Local Fibrinolytic Intervention Trial (MELT) [26, 27]. PROACT-II utilized 9 mg of recombinant pro-urokinase or heparin (control group) given as an intra-arterial infusion over 2 h in cases of middle cerebral artery (MCA) occlusion presenting less than 6 h following stroke onset [26]. In this study, 40 % of treatment patients reached a modified Rankin score (mRS) of <2 % vs. 25 % of control patients. Recanalization rates were 66 % in the treatment group vs. 18 % in controls. Symptomatic intracranial hemorrhage was higher in the treatment group at 10 % vs. 2 % for controls; however, mortality was equal in the two groups. The MELT trial utilized urokinase delivered in bolus doses every 5 min until recanalization was achieved in cases of MCA occlusion presenting within 6 h of stroke onset [27]. The control arm of the MELT trial received standard medical therapy that did not include intravenous rtPA as it was not approved in Japan during the trial. The MELT trial was halted early when intravenous rtPA was approved for use in acute ischemic stroke in Japan. The subsequent analysis of the truncated dataset was promising but did not reach significance for the primary endpoint, mRS 0–2 at 90 days, where 49 % of the treatment arm reached this endpoint vs. 39 % in the control group. However, secondary analyses were significantly improved including excellent outcome (mRS 0–1 at 90 days) achieved in 42 % of treatment patients vs. 23 % of controls and a National Institutes of Health Stroke Scale (NIHSS) score of 0–1 at 90 days was 5.3 % in the treatment arm and 3.5 % in the control arm ( $P=0.017$ ). Rates of intracerebral hemorrhage (ICH) were 9 % in treatment patients and 2 % in controls.

No thrombolytic therapy has received regulatory approval for intra-arterial use in the United States. Therefore, the use of intra-arterial thrombolytics is considered off label [28]. Furthermore, pro-urokinase is not clinically available in the United States and urokinase has not been approved for use in acute ischemic stroke, leaving rtPA as the thrombolytic of choice for intra-arterial thrombolysis in most centers. The American College of Chest Physicians has included intra-arterial rtPA as an option for acute ischemic stroke <6 h in an MCA distribution or in the basilar distribution in centers with expertise in endovascular therapy [28].





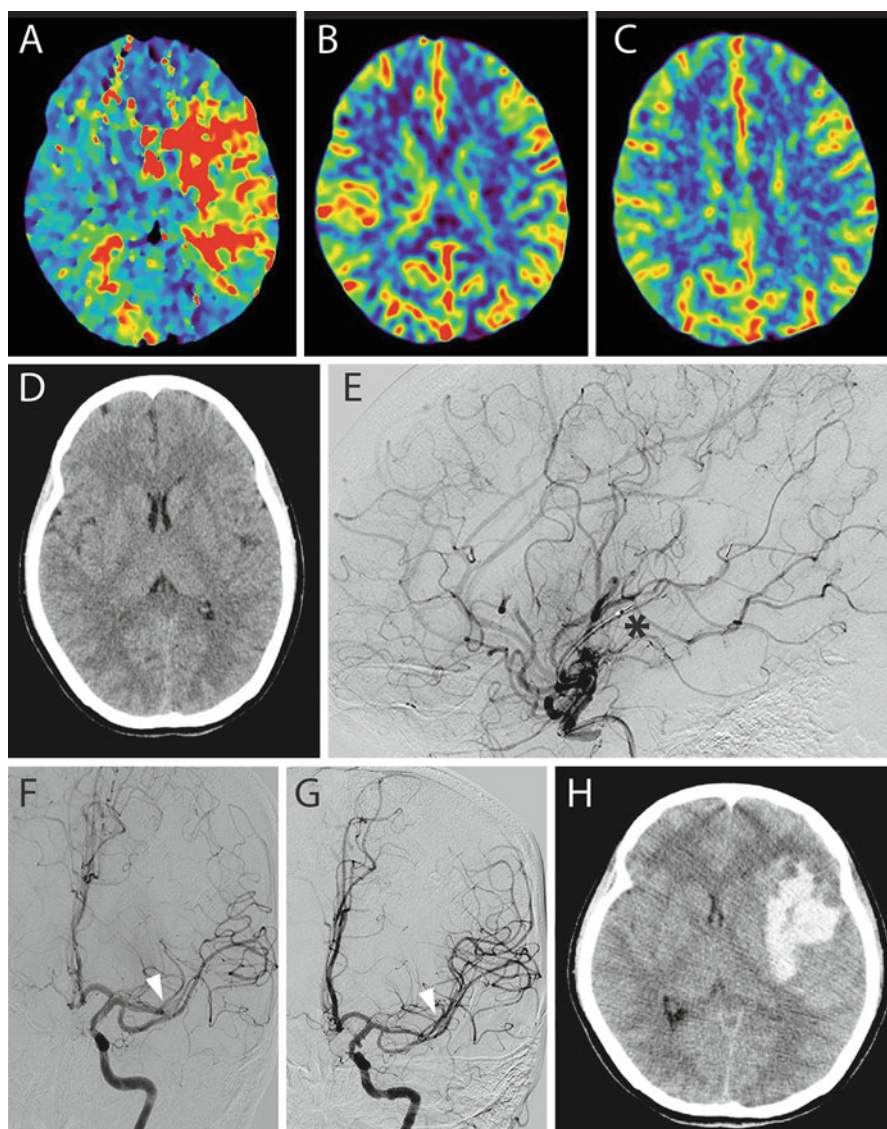
**Fig. 2.2** Intra-arterial and mechanical thrombolysis for acute stroke. This 36-year-old female presented 4 h after acute onset arm and facial weakness with dysarthria. **(a)** Initial CT scan demonstrated early ischemic changes in the right MCA distribution. **(b, c)** CT perfusion demonstrated decreased cerebral blood flow **(b)** and elevated time to peak concentration **(c)** in the right MCA distribution. The patient received 0.6 mg/kg of rtPA and was taken to angiography. **(d)** Angiogram revealed an occlusion of the right internal carotid artery (*asterisk*). **(e)** A Penumbra device was used to aspirate clot from the internal carotid artery and achieve reperfusion. **(f)** Intra-arterial rtPA was infused through a microcatheter (catheter tip at *black arrow*) to achieve recanalization of the MCA. **(g–i)** The patient did not have neurological recovery following recanalization and went on to have a completed stroke in the right MCA distribution as demonstrated by hypodensity on plain CT 24 h after rtPA. Early uncal herniation **(g)** and midline shift **(h)** were evident

Combination therapy with intravenous rtPA followed by intra-arterial thrombolysis is a strategy that provides the benefit of early intravenous thrombolytic dosing followed by intra-arterial administration of thrombolytic drug directly to the thrombus [29]. This strategy has been studied in the Interventional Management of Stroke (IMS) II trial comparing reduced dose (0.6 mg/kg) rtPA intravenous followed by intra-arterial rtPA (maximum dose 22 mg) to historical controls from the NINDS study [30]. IMS II patients had a mortality of 16 % vs. 24 % in the NINDS placebo arm. Furthermore, all functional measures were improved in IMS II patients compared to NINDS placebo patients and the rate of intracerebral hematoma was not different between the IMS II cohort and the intravenous rtPA arm of NINDS. Combination strategies utilizing various dosing of intravenous and intra-arterial thrombolytics have been reported in noncontrolled studies with promising results [31–34]. A Phase III trial (IMS III) comparing standard intravenous rtPA treatment vs. reduced dose intravenous rtPA followed by intra-arterial rtPA for patients presenting within 3 h of stroke onset is ongoing (NCT00359424, Clinicaltrials.gov).

Mechanical thrombolysis and embolectomy are strategies that employ an intra-arterial device to either physically break down or secure and retrieve a clot from the occluded artery (Figs. 2.2 and 2.3) [35, 36]. These therapies may be combined with stenting to maintain recanalization after embolectomy [37]. Generally, these therapies are combined with intravenous and/or intra-arterial thrombolytics if the stroke presents within 4.5 h of onset or without pharmacologic thrombolysis in later presentations. The techniques employed in mechanical thrombolysis include clot disruption with an endovascular wire or sonothrombolysis where ultrasound pulses are delivered with thrombolytics at the tip of the catheter [38]. Embolectomy can be achieved with wire loops to capture emboli, retrievable stent strategies (Fig. 2.3e) or aspiration catheters that suction clot from the vessel (Fig. 2.2e) [38]. Devices to achieve vessel recanalization have largely been approved based on safety and recanalization results in large animal models and in small human studies, limiting functional outcome measures in support of these strategies. The Mechanical Embolectomy in Acute Ischemic Stroke (MERCI) trial is the main evidence supporting mechanical clot retrieval [39, 40]. The MERCI device is an intra-arterial coiled wire that is “corkscrewed” around or into the clot to trap it and then used to physically retrieve the clot by pulling it from the parent artery. In the MERCI trial patients presenting within 3 h of stroke onset in any vascular distribution were given intravenous rtPA at standard doses. If the occlusion did not resolve on follow-up angiography, then the MERCI device was utilized. The device resulted in a 57 % recanalization rate that increased to 70 % with additional intra-arterial rtPA. An mRS outcome of 0–2 was achieved in 36 % of patients, the mortality rate was 34 % and the risk of procedure-related morbidity was 5.5 %. In summary, mechanical means of recanalization show promise in early clinical trials and warrant further study.

In vascular distributions other than the MCA, there is less evidence to guide the use of intra-arterial thrombolytic therapy and/or mechanical thrombolysis. In multiple case series of intra-arterial therapy for basilar artery occlusion, a potentially





**Fig. 2.3** This 42-year-old patient presented 3 h after acute onset aphasia and right arm and leg hemiparesis. (**a–c**) Early CT perfusion demonstrated an elevated time to peak concentration (**a**) with minimal deficit in cerebral blood flow (**b**) or cerebral blood volume (**c**) suggesting good collateralization in the MCA territory. (**d**) Plain CT demonstrates early stroke in left insular cortex. The patient received 0.6 mg/kg of rtPA and was taken to the angiography suite. (**e**) A retrievable stent was deployed in the occluded M2 branch of the MCA (*asterisk*) and clot was retrieved. (**f**) Angiogram prior to stent retrieval shows M2 occlusion (*arrow*). (**g**) Angiogram following clot retrieval shows recanalization of the occluded M2 branch (*arrow*). (**h**) Nine hours after the procedure the patient declined with worsening weakness and decreased level of consciousness and was found to have an intracerebral hematoma in the distribution of the stroke. The patient went on to surgery to evacuate this clot without major clinical improvements postoperatively

positive effect has been demonstrated when recanalization is achieved [41–44]. Stent-assisted recanalization of basilar occlusion has been reviewed in case series and has been shown to achieve improved recanalization rates with an acceptable risk profile up to 8 h after stroke onset [45, 46]. Randomized controlled trials for basilar occlusion might clarify the role for these treatments in this indication; however, such a trial would be difficult to execute given the poor outcomes experienced by these patients, the relatively infrequent presentation of these cases, and the lack of a standard therapy to act as a control.

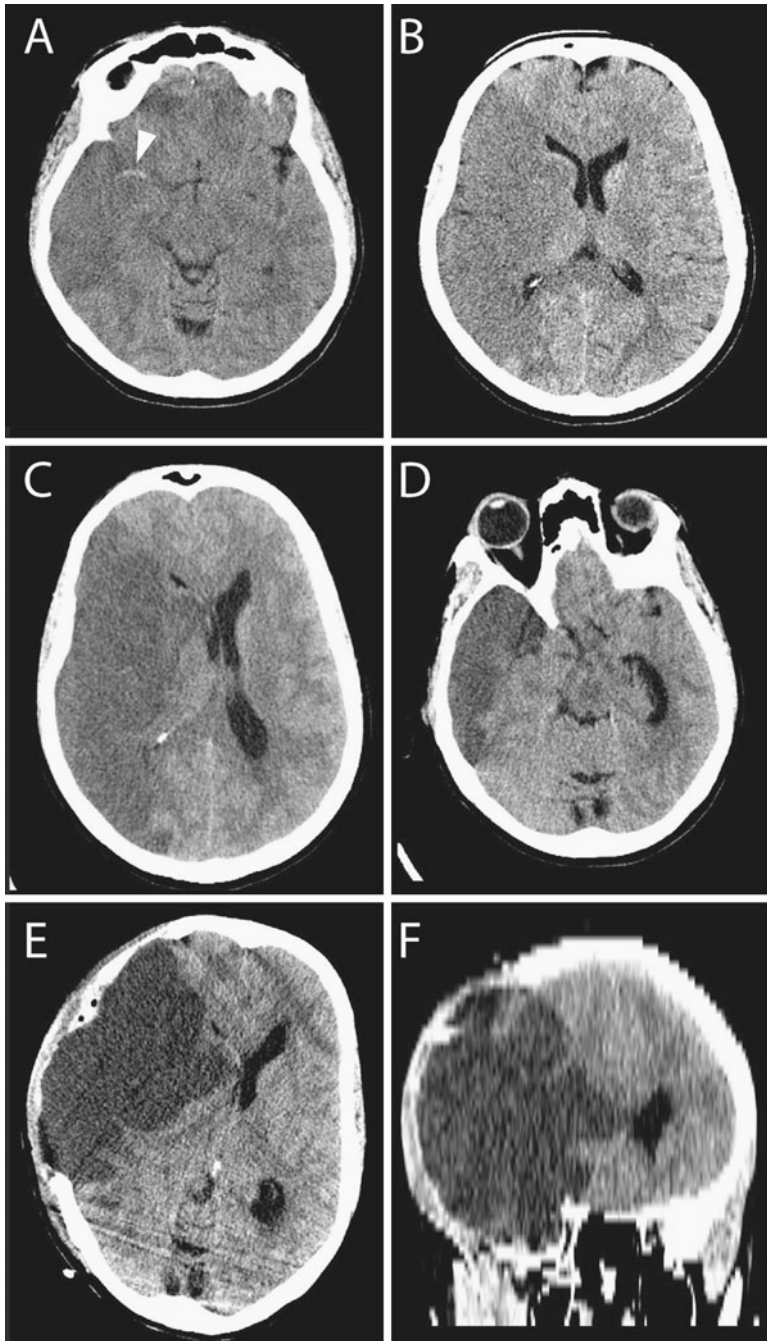
## ***Decompressive Craniectomy***

In cases where reperfusion fails to reverse the evolution of stroke or where stroke progresses despite recanalization, there is a risk for malignant edema and elevated intracranial pressure (ICP) that may be life threatening (Fig. 2.4). Mortality in this cohort of patients has been as high as 78 % [47]. In severe cases there is a role for decompressive craniectomy to relieve brain shift, herniation, elevated ICP, and death. For malignant MCA stroke, the procedure generally includes a large craniectomy, durotomy, and subtemporal decompression (Fig. 2.4e, f). Results for decompressive craniectomy in case series and randomized trials demonstrate a significant decrease in mortality after this procedure [48, 49]. Patient age is the only definitive predictive factor of outcome after decompressive hemicraniectomy for stroke, where younger patients have better functional outcomes [50]. Other factors including timing of surgery, side of stroke, and the presence of herniation have not proven to be significant predictors of outcome. A potential downside of decompressive craniectomy for stroke is that the procedure saves lives but leaves patients in severely disabled or persistent vegetative states [51, 52]. Both the benefits and potential harms of this procedure must be considered carefully in the context of a specific case before treatment is undertaken.

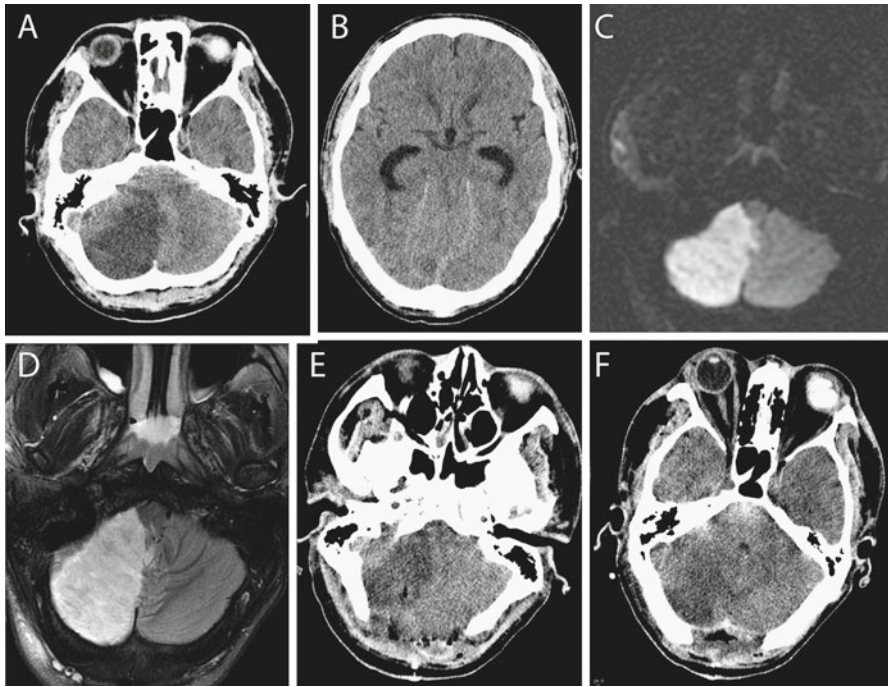
In the case of cerebellar infarction, there is a risk of direct brainstem compression and hydrocephalus if swelling occurs (Fig. 2.5) [53]. Suboccipital craniectomy, in addition to expansion duroplasty, can be used to accommodate cerebellar swelling. In severe cases of cerebellar edema, infarcted tissue can be excised to provide more room for swelling (Fig. 2.5e, f). Early craniectomy in these cases may be justified to prevent impending herniation or brainstem compression.

## **Treatment of Hemorrhagic Stroke**

Hemorrhagic stroke is broadly organized into ICH that involves bleeding into the parenchyma of the brain (Fig. 2.6), SAH that involves bleeding in the subarachnoid space from a ruptured vessel and intraventricular hemorrhage (IVH) where bleeding occurs into the ventricular system. All three can be caused by trauma, but



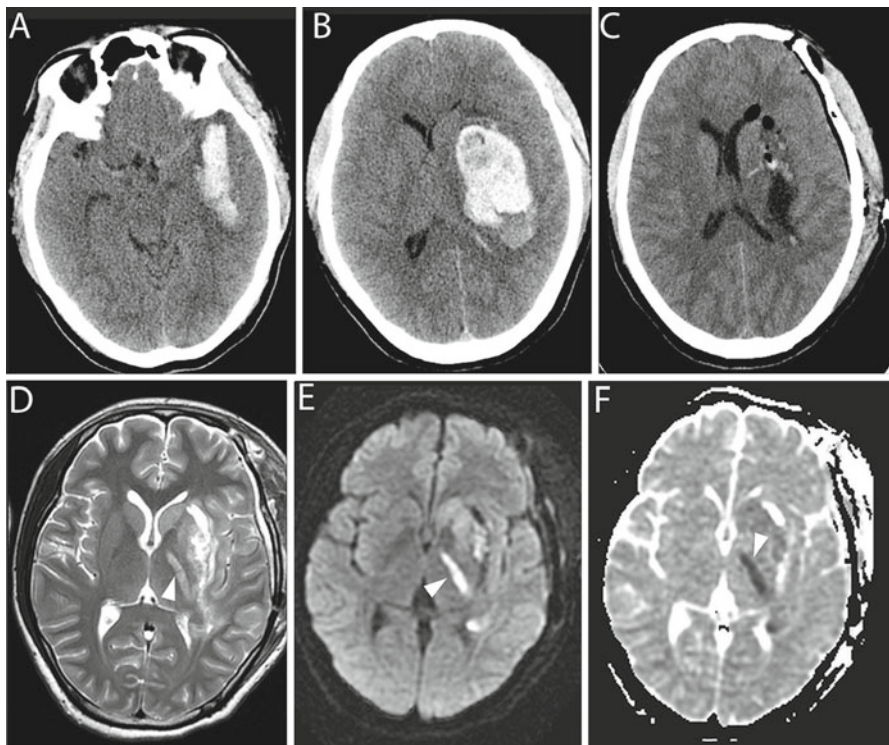
**Fig. 2.4** Decompressive craniectomy for malignant MCA stroke. This 48-year-old female experienced left hemiparesis following a cardiac procedure on cardiorespiratory bypass. (a) A hyperdense right MCA sign was observed (*arrow*) with MCA stroke. (b) The entire right MCA distribution was involved with diffuse hypodensity. The next day the patient had an acute loss of consciousness with a Cushing's response and dilated right pupil. (c, d) Urgent CT scan revealed malignant edema with midline shift (c) and uncal herniation (d). (e, f) Emergent decompressive craniectomy, subtemporal decompression, and duroplasty were undertaken to allow external herniation of edematous brain



**Fig. 2.5** Cerebellar stroke may lead to edema and obstructive hydrocephalus. This 27-year-old man with a history of an intracardiac arteriovenous shunt presented with a 4-h history of headache, nausea, and vomiting and decreased level of consciousness. He presented in extremis with bilateral fixed pupils and no motor response. (a, b) A posterior inferior cerebellar artery infarct was diagnosed with complete obliteration of the fourth ventricle (a) and acute hydrocephalus (b). (c, d) An emergent extraventricular drain was inserted followed by magnetic resonance imaging (MRI) diffusion-weighted imaging (c) and T2 imaging (d) that confirmed a completed stroke as hyperintensity in the vascular distribution. (e, f) The patient was taken for posterior fossa decompression and expansion duroplasty. Edematous, infarcted tissue was resected from the cerebellum during the procedure to facilitate closure. The fourth ventricle was patent after the case (f). The patient went on to make a full neurological recovery

spontaneous cases are classified as strokes. In all three cases the acute management relates to the avoidance of secondary deterioration to preserve neurological function remaining after the primary injury. The common etiologies of spontaneous ICH include hypertensive hemorrhages, amyloid angiopathy, coagulopathy or anticoagulation therapy-related hemorrhages, bleeding into ischemic stroke, bleeding from ruptured vascular malformations, and bleeding from tumors. As discussed in the introduction there is no convincing evidence for an ischemic penumbra surrounding an ICH, although there may be a metabolic penumbra that promotes cell death in the subacute phase [54]. Generally, secondary deterioration in ICH relates to enlargement of the clot and compression of adjacent structures. Therefore the central tenet of treatment of ICH is prevention of clot expansion and treatment of the underlying





**Fig. 2.6** Intracerebral hemorrhage requiring surgical evacuation. This 37-year-old male presented with acute onset headache, nausea and vomiting, aphasia, and progressive right hemiparesis. (a, b) CT revealed a left putamenal hemorrhage with heterogeneous densities of blood. The hematoma was found to come within 1 cm of the cortical surface (a) and was deemed a surgical lesion. (c) Emergent craniotomy was performed and the entire hematoma was removed. (d–f) The patient had no clinical improvement following surgery. Delayed MRI revealed persistent edema in tissue adjacent to the hematoma cavity with hyperintensity in the posterior limb of the internal capsule (arrow). Diffusion-weighted imaging (e) and apparent diffusion coefficient map (f) confirmed the stroke (arrow (e) and (f))

source of bleeding and/or decompression of the hematoma in cases where ICP is elevated.

Spontaneous SAH is generally related to ruptured brain aneurysms (about 85 % of cases), a group of idiopathic cases (about two-thirds being benign perimesencephalic SAH) and occasionally from arteriovenous or other brain vascular malformations. In aneurysmal SAH, there is a risk of re-hemorrhage with clot expansion and a risk of delayed cerebral ischemia during which time there is an increased risk of stroke [55]. Hence, treatment of SAH involves rapid diagnosis and treatment of the source of bleeding and treatment of aneurysmal SAH involves prevention and treatment of angiographic vasospasm, which is the main cause of delayed cerebral ischemia.

IVH is generally related to a preexisting ICH or SAH with extension into the ventricles and is associated with worse outcome in the case of ICH [56]. In IVH, deterioration relates to obstructive or communicating hydrocephalus and elevated ICP necessitating cerebral spinal fluid diversion [57]. The rest of the chapter will focus on the treatment of ICH.

## ***Acute Medical Management***

Principles of acute medical management for ICH are similar to those discussed for acute ischemic stroke with the exception of major differences in blood pressure management and the addition of managing anticoagulant reversal in the acute phase. Evidence-based guidelines for the management of ICH have been assembled and endorsed by the AHA and collaborating groups [58].

Acute blood pressure management is important in avoiding early re-hemorrhage in hypertensive ICH. The AHA guidelines recommend reduction of the blood pressure as follows: aggressive reduction of blood pressure if systolic >200 mmHg or mean arterial pressure >150 mmHg, reducing blood pressure to target a cerebral perfusion pressure of >60–80 mmHg in cases where systolic pressure is >180 mmHg or mean arterial pressure >130 mmHg and there is evidence of elevated ICP, and reduce blood pressure modestly to systolic ~160 mmHg and mean arterial pressure ~110 mmHg in cases where systolic pressure is >180 mmHg or mean arterial pressure is >130 mmHg and there is no evidence of raised ICP. There are several intravenous, oral, and transdermal agents that can be used for acute lowering of blood pressure including beta-blockers like labetalol or metoprolol, calcium channel blockers like nicardipine, and smooth muscle relaxants like hydralazine or nitrates.

For patients presenting with anticoagulant or fibrinolytic therapy-related hemorrhage, urgent reversal of the underlying therapy is necessary to prevent rebleeding. Patients treated with warfarin are deficient in vitamin K dependent clotting factors, therefore urgent replacement of these factors is required to reverse the elevated INR associated with warfarin. Vitamin K can be administered with fresh frozen plasma or with one of several different prothrombin complex concentrate products [59]. Patients on heparin receive protamine reversal. Antiplatelet therapy is associated with worsened outcomes following ICH [60]. Replacement of platelets does not seem to change outcome in these patients [60]. However, platelet replacement may be considered before, during, and after surgical procedures to avoid bleeding in these cases. Patients who have undergone fibrinolysis and subsequently suffer an ICH are at an elevated risk for mortality and poor neurologic outcome. Replacement of deficient coagulation factors is recommended in these cases but there is little evidence to guide management. Administration of recombinant factor VIIa is no longer recommended for the treatment of ICH due to a lack of improvement in functional outcome and an elevated risk of thromboembolic complications in the randomized controlled trial in ICH [61].



## ***Surgical Treatment of Intracerebral Hemorrhage***

Surgery for ICH involves removal of the hematoma with or without treatment of the primary source of bleeding. Several approaches to hematoma evacuation have been studied including open approaches via craniotomy (Fig. 2.6) [62], endoscopic approaches [63], and stereotactic needle aspiration with or without thrombolytic infusion into the hematoma [64–67]. Superiority of one technique compared to another has not been shown. Hematoma evacuation can be achieved with excellent results using each approach; however, re-accumulation of hematoma or re-bleeding is a common postoperative complication and is associated with further neurological decline [68].

Timing of surgery for ICH is a controversial topic as surgery has been proposed in the ultra-early timeframe (<7 h) out to 72 h following the ictus. In a randomized trial of ultra-early ICH evacuation, craniotomy performed <4 h from the onset of symptoms demonstrated no significant difference between surgery and conservative management with a trend towards higher mortality in surgery than conservative arms related to re-bleeding in the surgical arm [68]. Therefore, ultra-early evacuation must be done with the recognition that re-bleeding is a common and potentially detrimental complication. For surgery in the 8–12 h timeframe, a randomized controlled trial of 20 patients treated with surgery or conservative therapy following ICH showed no difference in mortality and a minor improvement in functional status for surgical patients in secondary analyses [69]. Surgery at later time points has not shown an advantage over conservative therapy in controlled studies [70, 71]. The International Surgical Trial in Intracerebral Haemorrhage (STICH) trial was a randomized trial comparing surgical evacuation within 24 h of randomization with initial conservative management [72]. Surgery occurred at a mean of 30 h after symptom onset in the initial surgery arm. In the conservative management arm, 26 % of patients went on to surgery at a mean time of 60 h following symptom onset. There was no overall difference in outcome between the two groups; however, in subgroup analysis, there was a benefit for patients with hemorrhage that presented less than 1 cm from the cortical surface. Further clinical trials will be required to establish definitive evidence to support this finding. Analysis of individual patient data from eight trials of surgery for ICH suggested that patients operated within 8 h of ictus, with hematoma volumes between 20 and 50 mL, Glasgow Coma Scores of 9–12 or age between 50 and 69, might benefit from surgery [73]. ICH location plays a key role in decision-making [74]. Approximately 80 % of hemorrhages occur in the supratentorial compartment and 20 % in the infratentorial compartment with site-specific incidence estimated to be 34 % in the putamen, 33 % in the thalamus, 14 % in lobar locations, 9 % in the brainstem, 7 % in the cerebellum, and 2 % in the caudate nucleus [74]. Surgery for supratentorial ICH is discussed above. Spontaneous hemorrhage in the brainstem carries a high risk of mortality and has no proven benefit from surgical evacuation in the acute phase [74, 75]. Cerebellar hemorrhages are unique because there is a high risk of brainstem compression, hydrocephalus, and hemorrhage in this location, carrying a relatively

high mortality rate [76, 77]. A retrospective review of patients presenting with cerebellar hematoma, where cases were separated by ventricular compression and hydrocephalus, concluded that there may have been a benefit favoring surgery in cases where the fourth ventricle was compressed or obliterated and there was evidence of hydrocephalus [75]. Hematoma size  $>3$  cm was a predictive factor for poor outcome in all cases of cerebellar hemorrhage regardless of presenting neurological status; whereas hematoma size  $<3$  cm in patients with Glasgow Coma Scale (GCS) 13–15 was not a predictor of poor outcome [78]. Kobayashi and colleagues proposed a management protocol for cerebellar hemorrhage based on a retrospective review of 101 patients where patients were managed with conservative therapy when GCS was 13–15 and hematoma  $<40$  mm, surgery for patients with GCS  $<13$  and/or hematoma  $>40$  mm and palliation for patients lacking brainstem reflexes [79]. This protocol was tested on 49 prospectively collected patients by the same group and emulated in another prospective case series from Italy and demonstrated acceptable outcomes [79, 80]. Data from these studies and other noncontrolled studies have been applied to the AHA guidelines that recommend surgical evacuation of cerebellar hematomas  $>3$  cm or in cases with hydrocephalus or brainstem compression.

## Summary

Treatment of ischemic stroke currently is limited to rtPA and decompressive craniectomy in selected cases and to supportive medical care. Hemorrhagic strokes are surgically evacuated in some cases, and the offending aneurysm or source of hemorrhage obliterated. Outcomes overall remain suboptimal (see Chap. 1). Stroke remains among the leading causes of disability. Reducing this likely requires addressing underlying risk factors as well as developing better acute treatments than those reviewed here and understanding and developing better rehabilitation strategies, as discussed in Chap. 16.

## References

1. Thorvaldsen P, Asplund K, Kuulasmaa K, Rajakangas AM, Schroll M. Stroke incidence, case fatality, and mortality in the WHO MONICA project. World Health Organization Monitoring Trends and Determinants in Cardiovascular Disease. *Stroke*. 1995;26(3):361–7.
2. Baron JC. Perfusion thresholds in human cerebral ischemia: historical perspective and therapeutic implications. *Cerebrovasc Dis*. 2001;11 Suppl 1:2–8.
3. Mayer SA, Rincon F. Treatment of intracerebral haemorrhage. *Lancet Neurol*. 2005;4(10):662–72.
4. Zaleska MM, Mercado ML, Chavez J, Feuerstein GZ, Pangalos MN, Wood A. The development of stroke therapeutics: promising mechanisms and translational challenges. *Neuropharmacology*. 2009;56(2):329–41.

5. Davis SM, Broderick J, Hennerici M, Brun NC, Diringer MN, Mayer SA, et al. Hematoma growth is a determinant of mortality and poor outcome after intracerebral hemorrhage. *Neurology*. 2006;66(8):1175–81.
6. van der Worp HB, van Gijn J. Clinical practice. Acute ischemic stroke. *N Engl J Med*. 2007;357(6):572–9.
7. Saver JL. Time is brain—quantified. *Stroke*. 2006;37(1):263–6.
8. Adams Jr HP, del Zoppo G, Alberts MJ, Bhatt DL, Brass L, Furlan A, et al. Guidelines for the early management of adults with ischemic stroke: a guideline from the American Heart Association/American Stroke Association Stroke Council, Clinical Cardiology Council, Cardiovascular Radiology and Intervention Council, and the Atherosclerotic Peripheral Vascular Disease and Quality of Care Outcomes in Research Interdisciplinary Working Groups: the American Academy of Neurology affirms the value of this guideline as an educational tool for neurologists. *Stroke*. 2007;38(5):1655–711.
9. Hilker R, Poetter C, Findeisen N, Sobesky J, Jacobs A, Neveling M, et al. Nosocomial pneumonia after acute stroke: implications for neurological intensive care medicine. *Stroke*. 2003;34(4):975–81.
10. Leonardi-Bee J, Bath PM, Phillips SJ, Sandercock PA; IST Collaborative Group. Blood pressure and clinical outcomes in the International Stroke Trial. *Stroke*. 2002;33(5):1315–20.
11. Stead LG, Gilmore RM, Decker WW, Weaver AL, Brown Jr RD. Initial emergency department blood pressure as predictor of survival after acute ischemic stroke. *Neurology*. 2005;65(8):1179–83.
12. Tanne D, Kasner SE, Demchuk AM, Koren-Morag N, Hanson S, Grond M, et al. Markers of increased risk of intracerebral hemorrhage after intravenous recombinant tissue plasminogen activator therapy for acute ischemic stroke in clinical practice: the Multicenter rt-PA Stroke Survey. *Circulation*. 2002;105(14):1679–85.
13. Markus HS. Cerebral perfusion and stroke. *J Neurol Neurosurg Psychiatry*. 2004;75(3):353–61.
14. Greer DM, Funk SE, Reaven NL, Ouzounelli M, Uman GC. Impact of fever on outcome in patients with stroke and neurologic injury: a comprehensive meta-analysis. *Stroke*. 2008;39(11):3029–35.
15. Hemmen TM, Lyden PD. Induced hypothermia for acute stroke. *Stroke*. 2007;38(2 Suppl):794–9.
16. Malouf R, Brust JC. Hypoglycemia: causes, neurological manifestations, and outcome. *Ann Neurol*. 1985;17(5):421–30.
17. Yong M, Kaste M. Dynamic of hyperglycemia as a predictor of stroke outcome in the ECASS-II trial. *Stroke*. 2008;39(10):2749–55.
18. Wintermark M, Reichhart M, Cuisenaire O, Maeder P, Thiran JP, Schnyder P, et al. Comparison of admission perfusion computed tomography and qualitative diffusion- and perfusion-weighted magnetic resonance imaging in acute stroke patients. *Stroke*. 2002;33(8):2025–31.
19. Chalela JA, Alsop DC, Gonzalez-Atavales JB, Maldjian JA, Kasner SE, Detre JA. Magnetic resonance perfusion imaging in acute ischemic stroke using continuous arterial spin labeling. *Stroke*. 2000;31(3):680–7.
20. NINDS tSTSG. Tissue plasminogen activator for acute ischemic stroke. The National Institute of Neurological Disorders and Stroke rt-PA Stroke Study Group. *N Engl J Med*. 1995;333(24):1581–7.
21. Kwiatkowski TG, Libman RB, Frankel M, Tilley BC, Morgenstern LB, Lu M, et al. Effects of tissue plasminogen activator for acute ischemic stroke at one year. National Institute of Neurological Disorders and Stroke Recombinant Tissue Plasminogen Activator Stroke Study Group. *N Engl J Med*. 1999;340(23):1781–7.
22. Hacke W, Kaste M, Bluhmki E, Brozman M, Dávalos A, Guidetti D, et al.; ECASS Investigators. Thrombolysis with alteplase 3 to 4.5 hours after acute ischemic stroke. *N Engl J Med*. 2008;359(13):1317–29.

23. Hacke W, Albers G, Al-Rawi Y, Bogousslavsky J, Davalos A, Eliasziw M, et al.; DIAS Study Group. The Desmoteplase in Acute Ischemic Stroke Trial (DIAS): a phase II MRI-based 9-hour window acute stroke thrombolysis trial with intravenous desmoteplase. *Stroke*. 2005;36(1):66–73.
24. Tanswell P, Modi N, Combs D, Danays T. Pharmacokinetics and pharmacodynamics of tenecteplase in fibrinolytic therapy of acute myocardial infarction. *Clin Pharmacokinet*. 2002;41(15):1229–45.
25. Haley EC Jr, Lyden PD, Johnston KC, Hemmen TM; TNK in Stroke Investigators. A pilot dose-escalation safety study of tenecteplase in acute ischemic stroke. *Stroke*. 2005;36(3):607–12.
26. Furlan A, Higashida R, Wechsler L, Gent M, Rowley H, Kase C, et al. Intra-arterial prourokinase for acute ischemic stroke. The PROACT II study: a randomized controlled trial. Prolyse in Acute Cerebral Thromboembolism. *JAMA*. 1999;282(21):2003–11.
27. Ogawa A, Mori E, Minematsu K, Taki W, Takahashi A, Nemoto S, et al.; MELT Japan Study Group. Randomized trial of intraarterial infusion of urokinase within 6 hours of middle cerebral artery stroke: the middle cerebral artery embolism local fibrinolytic intervention trial (MELT) Japan. *Stroke*. 2007;38(10):2633–39.
28. Albers GW, Amarenco P, Easton JD, Sacco RL, Teal P; American College of Chest Physicians. Antithrombotic and thrombolytic therapy for ischemic stroke: American College of Chest Physicians Evidence-Based Clinical Practice Guidelines (8th Edition). *Chest*. 2008;133(6 Suppl):630S–69S.
29. Burns TC, Rodriguez GJ, Patel S, Hussein HM, Georgiadis AL, Lakshminarayan K, et al. Endovascular interventions following intravenous thrombolysis may improve survival and recovery in patients with acute ischemic stroke: a case-control study. *AJNR Am J Neuroradiol*. 2008;29(10):1918–24.
30. IMS II Trial Investigators. The Interventional Management of Stroke (IMS) II Study. *Stroke*. 2007;38(7):2127–35.
31. Flaherty ML, Woo D, Kissela B, Jauch E, Pancioli A, Carrozzella J, et al. Combined IV and intra-arterial thrombolysis for acute ischemic stroke. *Neurology*. 2005;64(2):386–8.
32. Lee KY, Kim DI, Kim SH, Lee SI, Chung HW, Shim YW, et al. Sequential combination of intravenous recombinant tissue plasminogen activator and intra-arterial urokinase in acute ischemic stroke. *AJNR Am J Neuroradiol*. 2004;25(9):1470–5.
33. Shaltoni HM, Albright KC, Gonzales NR, Weir RU, Khaja AM, Sugg RM, et al. Is intra-arterial thrombolysis safe after full-dose intravenous recombinant tissue plasminogen activator for acute ischemic stroke? *Stroke*. 2007;38(1):80–4.
34. Kim DJ, Kim DI, Kim SH, Lee KY, Heo JH, Han SW. Rescue localized intra-arterial thrombolysis for hyperacute MCA ischemic stroke patients after early non-responsive intravenous tissue plasminogen activator therapy. *Neuroradiology*. 2005;47(8):616–21.
35. Stead LG, Gilmore RM, Bellolio MF, Rabinstein AA, Decker WW. Percutaneous clot removal devices in acute ischemic stroke: a systematic review and meta-analysis. *Arch Neurol*. 2008;65(8):1024–30.
36. Leary MC, Saver JL, Gobin YP, Jahan R, Duckwiler GR, Vinuela F, et al. Beyond tissue plasminogen activator: mechanical intervention in acute stroke. *Ann Emerg Med*. 2003;41(6):838–46.
37. Levy EI, Ecker RD, Horowitz MB, Gupta R, Hanel RA, Sauvageau E, et al. Stent-assisted intracranial recanalization for acute stroke: early results. *Neurosurgery*. 2006;58(3):458–63. discussion 458–463.
38. Nogueira RG, Schwamm LH, Hirsch JA. Endovascular approaches to acute stroke, part 1: drugs, devices, and data. *AJNR Am J Neuroradiol*. 2009;30(4):649–61.
39. Smith WS. Safety of mechanical thrombectomy and intravenous tissue plasminogen activator in acute ischemic stroke. Results of the multi Mechanical Embolus Removal in Cerebral Ischemia (MERCi) trial, part I. *AJNR Am J Neuroradiol*. 2006;27(6):1177–82.

40. Smith WS, Sung G, Saver J, Budzik R, Duckwiler G, Liebeskind DS, et al.; Multi MERCI Investigators. Mechanical thrombectomy for acute ischemic stroke: final results of the Multi MERCI trial. *Stroke*. 2008;39(4):1205–12.
41. Zeumer H, Ringelstein EB, Hacke W. [Vascular recanalization procedure in interventional neuroradiology]. *Rofo*. 1983;139(5):467–75.
42. Hacke W, Zeumer H, Ferbert A, Brückmann H, del Zoppo GJ. Intra-arterial thrombolytic therapy improves outcome in patients with acute vertebrobasilar occlusive disease. *Stroke*. 1988;19(10):1216–22.
43. Jung S, Mono ML, Fischer U, Galimanis A, Findling O, De Marchis GM, et al. Three-month and long-term outcomes and their predictors in acute basilar artery occlusion treated with intra-arterial thrombolysis. *Stroke*. 2011;42(7):1946–51.
44. Bergui M, Stura G, Daniele D, Cerrato P, Berardino M, Bradac GB. Mechanical thrombolysis in ischemic stroke attributable to basilar artery occlusion as first-line treatment. *Stroke*. 2006;37(1):145–50.
45. Xavier AR, Tiwari A, Purai N, Rayes M, Pandey P, Kansara A, et al. Safety and efficacy of intracranial stenting for acute ischemic stroke beyond 8 h of symptom onset. *J Neurointerv Surg*. 2012;4(2):94–100.
46. Lutsep HL, Rymer MM, Nesbit GM. Vertebrobasilar revascularization rates and outcomes in the MERCI and multi-MERCI trials. *J Stroke Cerebrovasc Dis*. 2008;17(2):55–7.
47. Hacke W, Schwab S, Horn M, Spranger M, De Georgia M, von Kummer R. ‘Malignant’ middle cerebral artery territory infarction: clinical course and prognostic signs. *Arch Neurol*. 1996;53(4):309–15.
48. Walz B, Zimmermann C, Böttger S, Haberl RL. Prognosis of patients after hemicraniectomy in malignant middle cerebral artery infarction. *J Neurol*. 2002;249(9):1183–90.
49. Vahedi K, Vicaut E, Mateo J, Kurtz A, Orabi M, Guichard JP, et al.; DECIMAL Investigators. Sequential-design, multicenter, randomized, controlled trial of early decompressive craniectomy in malignant middle cerebral artery infarction (DECIMAL Trial). *Stroke*. 2007;38(9):2506–17.
50. Gupta R, Connolly ES, Mayer S, Elkind MS. Hemicraniectomy for massive middle cerebral artery territory infarction: a systematic review. *Stroke*. 2004;35(2):539–43.
51. Carter BS, Ogilvy CS, Candia GJ, Rosas HD, Buonanno F. One-year outcome after decompressive surgery for massive nondominant hemispheric infarction. *Neurosurgery*. 1997;40(6):1168–75. discussion 1175–1166.
52. Leonhardt G, Wilhelm H, Doerfler A, Ehrenfeld CE, Schoch B, Rauhut F, et al. Clinical outcome and neuropsychological deficits after right decompressive hemicraniectomy in MCA infarction. *J Neurol*. 2002;249(10):1433–40.
53. Chen HJ, Lee TC, Wei CP. Treatment of cerebellar infarction by decompressive suboccipital craniectomy. *Stroke*. 1992;23(7):957–61.
54. Schellinger PD, Fiebach JB, Hoffmann K, Becker K, Orakcioglu B, Kollmar R, et al. Stroke MRI in intracerebral hemorrhage: is there a perihemorrhagic penumbra? *Stroke*. 2003;34(7):1674–9.
55. Macdonald RL, Pluta RM, Zhang JH. Cerebral vasospasm after subarachnoid hemorrhage: the emerging revolution. *Nat Clin Pract Neurol*. 2007;3(5):256–63.
56. Tuhim S, Horowitz DR, Sacher M, Godbold JH. Volume of ventricular blood is an important determinant of outcome in supratentorial intracerebral hemorrhage. *Crit Care Med*. 1999;27(3):617–21.
57. Bhattathiri PS, Gregson B, Prasad KS, Mendelow AD; STICH Investigators. Intraventricular hemorrhage and hydrocephalus after spontaneous intracerebral hemorrhage: results from the STICH trial. *Acta Neurochir Suppl*. 2006;96:65–8.
58. Broderick J, Connolly S, Feldmann E, Hanley D, Kase C, Krieger D, et al. Guidelines for the management of spontaneous intracerebral hemorrhage in adults: 2007 update—a guideline from the American Heart Association/American Stroke Association Stroke Council, High

- Blood Pressure Research Council, and the Quality of Care and Outcomes in Research Interdisciplinary Working Group. *Stroke*. 2007;38(6):2001–23.
59. Lubetsky A, Hoffman R, Zimlichman R, Eldor A, Zvi J, Kostenko V, et al. Efficacy and safety of a prothrombin complex concentrate (Octaplex) for rapid reversal of oral anticoagulation. *Thromb Res*. 2004;113(6):371–8.
  60. Creutzfeldt CJ, Weinstein JR, Longstreth Jr WT, Becker KJ, McPharlin TO, Tirschwell DL. Prior antiplatelet therapy, platelet infusion therapy, and outcome after intracerebral hemorrhage. *J Stroke Cerebrovasc Dis*. 2009;18(3):221–8.
  61. Mayer SA, Brun NC, Begtrup K, Broderick J, Davis S, Diringer MN, et al.; FAST Trial Investigators. Efficacy and safety of recombinant activated factor VII for acute intracerebral hemorrhage. *N Engl J Med*. 2008;358(20):2127–37.
  62. Rabinstein AA, Atkinson JL, Wijdicks EF. Emergency craniotomy in patients worsening due to expanded cerebral hematoma: to what purpose? *Neurology*. 2002;58(9):1367–72.
  63. Kuo LT, Chen CM, Li CH, Tsai JC, Chiu HC, Liu LC, et al. Early endoscope-assisted hematoma evacuation in patients with supratentorial intracerebral hemorrhage: case selection, surgical technique, and long-term results. *Neurosurg Focus*. 2011;30(4):E9.
  64. Zhou H, Zhang Y, Liu L, Han X, Tao Y, Tang Y, et al. A prospective controlled study: minimally invasive stereotactic puncture therapy versus conventional craniotomy in the treatment of acute intracerebral hemorrhage. *BMC Neurol*. 2011;11:76.
  65. Zhou H, Zhang Y, Liu L, Huang Y, Tang Y, Su J, et al. Minimally invasive stereotactic puncture and thrombolysis therapy improves long-term outcome after acute intracerebral hemorrhage. *J Neurol*. 2011;258(4):661–9.
  66. Carhuapoma JR, Barrett RJ, Keyl PM, Hanley DF, Johnson RR. Stereotactic aspiration-thrombolysis of intracerebral hemorrhage and its impact on perihematoma brain edema. *Neurocrit Care*. 2008;8(3):322–9.
  67. Umebayashi D, Mandai A, Osaka Y, Nakahara Y, Tenjin H. Effects and complications of stereotactic aspiration for spontaneous intracerebral hemorrhage. *Neurol Med Chir (Tokyo)*. 2010;50(7):538–44.
  68. Morgenstern LB, Demchuk AM, Kim DH, Frankowski RF, Grotta JC. Rebleeding leads to poor outcome in ultra-early craniotomy for intracerebral hemorrhage. *Neurology*. 2001;56(10):1294–9.
  69. Zuccarello M, Brott T, Derex L, Kothari R, Sauerbeck L, Tew J, et al. Early surgical treatment for supratentorial intracerebral hemorrhage: a randomized feasibility study. *Stroke*. 1999;30(9):1833–9.
  70. Tan SH, Ng PY, Yeo TT, Wong SH, Ong PL, Venketasubramanian N. Hypertensive basal ganglia hemorrhage: a prospective study comparing surgical and nonsurgical management. *Surg Neurol*. 2001;56(5):287–92. discussion 292–283.
  71. Juvela S, Heiskanen O, Poranen A, Valtonen S, Kuurne T, Kaste M, et al. The treatment of spontaneous intracerebral hemorrhage. A prospective randomized trial of surgical and conservative treatment. *J Neurosurg*. 1989;70(5):755–8.
  72. Mendelow AD, Gregson BA, Fernandes HM, Murray GD, Teasdale GM, Hope DT, et al. Early surgery versus initial conservative treatment in patients with spontaneous supratentorial intracerebral haematomas in the International Surgical Trial in Intracerebral Haemorrhage (STICH): a randomised trial. *Lancet*. 2005;365(9457):387–97.
  73. Gregson BA, Broderick JP, Auer LM, Batjer H, Chen XC, Juvela S, et al. Individual patient data subgroup meta-analysis of surgery for spontaneous supratentorial intracerebral hemorrhage. *Stroke*. 2012;43:1496–504.
  74. Inagawa T, Ohbayashi N, Takechi A, Shibukawa M, Yahara K. Primary intracerebral hemorrhage in Izumo City, Japan: incidence rates and outcome in relation to the site of hemorrhage. *Neurosurgery*. 2003;53(6):1283–97. discussion 1297–1288.
  75. Da Pian R, Bazzan A, Pasqualin A. Surgical versus medical treatment of spontaneous posterior fossa haematomas: a cooperative study on 205 cases. *Neurol Res*. 1984;6(3):145–51.



76. Barbato G, Moul DE, Schwartz P, Rosenthal NE, Oren DA. Spontaneous eye blink rate in winter seasonal affective disorder. *Psychiatry Res.* 1993;47(1):79–85.
77. Kirollos RW, Tyagi AK, Ross SA, van Hille PT, Marks PV. Management of spontaneous cerebellar hematomas: a prospective treatment protocol. *Neurosurgery.* 2001;49(6):1378–86. discussion 1386–1377.
78. Cohen ZR, Ram Z, Knoller N, Peles E, Hadani M. Management and outcome of non-traumatic cerebellar haemorrhage. *Cerebrovasc Dis.* 2002;14(3–4):207–13.
79. Kobayashi S, Sato A, Kageyama Y, Nakamura H, Watanabe Y, Yamaura A. Treatment of hypertensive cerebellar hemorrhage—surgical or conservative management? *Neurosurgery.* 1994;34(2):246–50. discussion 250–241.
80. Luparello V, Canavero S. Treatment of hypertensive cerebellar hemorrhage—surgical or conservative management? *Neurosurgery.* 1995;37(3):552–3.



<http://www.springer.com/978-1-4614-7671-9>

The Behavioral Consequences of Stroke

Schweizer, T.A.; Macdonald, L. (Eds.)

2014, XVIII, 349 p., Hardcover

ISBN: 978-1-4614-7671-9