

Chapter 2

Status of Climate Change Research

Abstract This chapter contains an overview of research in climate change science. Research ongoing and recent publications concerning each topic in Chap. 1. Topics of climate change research, such as temperature change on land and sea, impacts of climate change on glacial ice, the extent of permafrost and its carbon content, research into the carbon cycle, ocean acidification and circulation, and General Circulation Climate Models (GCMs) as well as the biology affected by climate change are discussed with references given.

Keywords CMIP5 · Permafrost · Moraine · PDO · Weart · Fourier · NCDC · BEST · LGM · Holocene · Anthropocene · Atmosphere · Stratosphere · Sangamonian · Eemian · www.skepticalscience.com · John Cook · Petagram · CERES · ICOS · 0.9 °C · ICOADS · David Archer · Fast carbon · Slow carbon · Carbon · Carbon cycle · TERRA · Albedo · Argo · MODIS · GHCN · *Homo sapiens* · ENSO · MSUs · Microwave sounding units · Solubility pumps · Biological · Solubility · Cryosphere · Scripps · La Jolla · GTNP · Tibetan plateau · NASA · NOAA · NSF · Virkisjökull · Greenland · Antarctica · Sea ice · Larsen B · PETM · Pleistocene · Pliocene · Anthropocene · GRACE · La Niña · ¹²C · ¹³C · ¹⁴C · CMIP5 · Atlantic · Pacific · Indian · GtC · Tyndall · Arrhenius

2.1 Introduction

Climate change research is healthy world-wide and there is a lot of it being conducted, only a small portion of which can be covered here. Climate research is not new. It has been conducted since Jean Baptiste Joseph Fourier did groundbreaking research on heat transfer and realized that the Earth would be much colder without the atmosphere. Earth's temperature usually given without the atmosphere is −15 to −18 °C. Other scientists followed Fourier in researching various aspects of climate and the Earth's temperature. John Tyndall conducted research that proved that carbon dioxide and water vapor were opaque to heat radiation. Svante Arrhenius,

a Swedish chemist, calculated how much the temperature would rise if CO₂ in the atmosphere doubled.

Svante Arrhenius was the first person to predict that emissions of carbon dioxide from the burning of fossil fuels and other combustion processes were large enough to cause global warming. His work is currently seen as the first demonstration that global warming should be taken as a serious possibility. Because he lived in Sweden, he thought that warming would be a good thing.

2.2 Research in Weather and Climate

The differences between weather and climate are treated in Sect. 1.1. Studies of climate show long-term trends of 30 years or more. Climate models treat the atmosphere, geosphere, biosphere, hydrosphere, and cryosphere as totally integrated aspects of climate. Weather models predict weather conditions tomorrow and possibly a few weeks in advance. Climate models are global and regional. Weather models are regional and local. Therefore, globally rising temperatures since 1750 or 1880 to the present are in the domain of climate, not weather. Storms, hurricanes, and the day-to-day temperatures are weather.

Global average temperatures for 2013 have recently been published by the BEST study in Berkeley, California USA, NASA/GISS, NOAA/NCDC, the U.K.'s Met Office and the University of East Anglia Climate Research Unit's HadCRUT4, and Cowtan and Way's recent publication in the Quarterly Journal of the Royal Meteorological Society. An analysis of these data is given by Stefan Rahmstorf at www.realclimate.org and is not repeated here. Suffice it to say that 2010 and 2005 remain the warmest years since records began in the 19th Century. 1998 ranks third in two records, and in Cowtan and Way's 2014 analysis, which interpolates the data-poor regions in the Arctic, Africa, and Antarctica, 2013 is warmer than 1998. 1998 was a very significant El Niño year, which generally warms the climate, and 2013 is neutral.

Tropospheric and lower stratospheric temperature data are collected by NOAA's TIROS-N polar-orbiting satellites and adjusted for time-dependent biases by the Global Hydrology and Climate Center at the University of Alabama in Huntsville (UAH). An independent analysis is also performed by Remote Sensing Systems (RSS) and a third analysis has been performed by Fu and Johanson (2005) of the University of Washington (UW).

Since 1978 Microwave Sounding Units (MSUs) measure radiation emitted by the Earth's atmosphere from NOAA polar orbiting satellites. The different channels of the MSU measure different frequencies of radiation proportional to the temperature of broad vertical layers of the atmosphere. The analysis of the satellite temperature record begins in 1979.

Fu and Johanson (2005) developed a method for quantifying the stratospheric contribution to the satellite record of tropospheric temperatures and applied an adjustment to the UAH and RSS temperature record that attempts to remove the

satellite contribution (cooling influence) from the middle troposphere record. This method results in trends that are larger than those from the satellite source.

A comprehensive inter-comparison (Seidel et al. 2004) showed that five radiosonde data sets yielded consistent signals for higher-frequency events such as ENSO, the Quasi-Biennial Oscillation (QBO) and volcanic eruptions, but inconsistent signals for long-term trends.

Radiosonde data must be adjusted for comparison to satellite temperature data. Analysis of radiosonde data can be found in NCDC's monthly Upper Air State of the Climate Report and the Bulletin of American Meteorology Society's Annual State of the Climate Report.

Cowtan and Way 2014 reported on an independent analysis of temperature data using the HadCRUT4 data set. HadCRUT4 is widely quoted as a measure of global warming. However observations in the dataset are only available for about 84 % (five sixths) of the planet. The omitted region includes the Arctic, which is warming at two and a half times faster than U.K.'s Met Office estimates over the past 16 years. As a result, HadCRUT4 underestimates the rate of warming in recent years. The Cowtan and Way dataset uses satellite data to fill in the gaps in the Met Office data (HadCRUT4).

2.3 The Intergovernmental Panel on Climate Change

The Intergovernmental Panel on Climate Change (IPCC) was introduced in Sect. 1.2. It is part of the United Nations and consists of a body of scientists with a record of contributions to climate science. Their task is to review and assess all the research that has been published in the time since their previous report. They do no original research and they do no monitoring for their reports. The reports are published about every 6 or 7 years. However, their reports form the basis for and a reference for many lines of climate change research.

2.4 Representative Concentration Pathways

The IPCC, in its AR5 2013 report introduced the use of Representative Concentration Pathways (RCPs), each of which represents an emission scenario; a new set of scenarios that replaces the Special Report on Emissions Scenarios (SRES) standards employed in two of the previous IPCC Assessment Reports (TAR and AR4). Emission scenarios are used primarily for projections by varying input that satisfies the conditions as set forth by the RCPs. The RCPs are especially important to the climate modeling groups working with large computer models as they provide a baseline of criteria that can be used by multiple groups. Standardizing the scenarios means that each group starts with the same criteria.

2.5 Radiative Forcing

Radiative forcing (RF) was defined in Sect. 1.4. In Fig. 1.3 we saw that carbon dioxide was the most powerful anthropogenic forcing agent.

Radiative forcing of the climate system involves every aspect of the system from space to the Earth's interior (e.g., volcanoes). To cite research ongoing in radiative forcing would involve a separate volume. As a result, a decision has been made to emphasize some of the research being done at the U.S. National Aeronautical and Space Administration's Goddard Institute of Space Studies (NASA/GISS).

2.5.1 *Research in Radiative Forcing*

Scientists at NASA/GISS have the Atmospheric Chemistry and Climate Model Intercomparison Project (ACCMIP) that evaluates the role of atmospheric chemistry, both gases and aerosols, in driving climate change radiative forcings. In particular, the intercomparison is designed to facilitate analyses of the driving forces of climate change in simulations being performed in the Climate Model Intercomparison Project phase 5 (CMIP5) in support of the IPCC AR5 and beyond.

The Goddard Institute Surface Temperature (GISTEMP) Analysis group considers surface air temperature change as a primary measure of global climate change in response to one or more forcings. The GISTEMP project started in the late 1970s to provide an estimate of the changing global surface air temperature which could be compared with the estimates obtained from climate models simulating the effect of changes in atmospheric carbon dioxide, volcanic aerosols, and solar irradiance. The continuing analysis updates global temperature change from the late 1800s to the present.

The Climate Impacts research group at NASA/GISS seeks to improve understanding of how climate affects human society.

Dr. James Hansen, who many refer to as the “Father of Modern Climate Science,” was the Director of NASA/GISS until his retirement in April 2013. Hansen will remain an activist on climate change. He has published more groundbreaking papers in peer-reviewed journals and books and given more public presentations and interviews on climate change than anyone else to date. His publications appear in the “Additional Reading” lists more often than any other.

Dr. Gavin Schmidt, a well-known climate modeler and one of the founders of realclimate.org, is an employee of NASA/GISS. His main research interest lies in understanding the variability of the climate, both its internal variability and the response to external forcing. In particular, how changes related to varying forcings relate to variations due to unforced climate variability such as oscillations in the ocean's deep thermohaline circulation that affect ocean heat transports or atmospheric modes of variability like the North Atlantic Oscillation (NAO). He mainly uses large-scale GCMs for the atmosphere and ocean to investigate these questions.

There is also a Climate Modeling Group at NASA/GISS that develops and does research using GCMs.

2.6 Earth's Energy Imbalance and Energy Flow

Earth's "energy imbalance and energy flow" was introduced in Sect. 1.5. Figure 1.4 illustrates the energy flow through the climate system.

Earth has been in radiative imbalance, with more energy from the Sun entering than energy (heat) exiting the top of the atmosphere since at least the 1970s when satellite monitoring began. It is virtually certain that Earth has gained substantial energy from 1971 to 2010. The estimated increase in energy inventory between 1971 and 2010 is 274×10^{21} J, with a heating rate of 213×10^{12} W from a linear fit to the annual values over that time period.

Improvements in satellite data and interpretation has led to new analyses for energy, incoming and outgoing, at the top of the atmosphere (TOA).

2.6.1 *Research into Earth's Energy Imbalance and Energy Flow*

Since 2007, knowledge of the magnitude of radiative energy fluxes in the climate system has improved, requiring an update of the global annual mean energy balance. Energy exchanges between Sun, Earth and Space are observed from space-borne platforms such as the Clouds and the Earth's Radiant Energy System (CERES) and the Solar Radiation and Climate Experiment (SORCE) which began data collection in 2000 and 2003, respectively. The total solar irradiance (TSI) incident at the TOA is now much better known, with the SORCE Total Irradiance Monitor (TIM) instrument reporting uncertainties as low as 0.035 %, compared to 0.1 % for other TSI instruments. During the 2008 solar minimum, SORCE/TIM observed a solar irradiance of $1,360.8 \pm 0.5$ W/m² compared to $1,365.5 \pm 1.3$ W/m² for instruments launched prior to SORCE and still operating in 2008.

NASA/GISS does the bulk of the research on energy flow within the climate system. Other research is done using satellite data provided by NASA at the following institutions: University of Hawaii, the Pacific Marine Environmental Laboratory in Seattle, National Center for Atmosphere Research (NCAR), the University of Reading, U.K., and the University of Miami, U.S.

There are many other agencies and institutions using these data and they are too numerous to mention individually.

Historically, Jim Hansen has been one of the leading researchers of Earth's energy imbalance and has published widely about the imbalance and energy flow throughout the climate system. Kevin Trenberth, and J.T. Fasullo of NCAR are also leading researchers.

2.7 Earth's Rising Temperatures

The subject of global temperatures and the rising trend were introduced in Sect. 1.6.

The land surface of Earth has been warming along with the lower atmosphere since the Industrial Revolution and we have instrumental records since 1880. The land surface directly affects climate due to its variations of albedo (degree of reflectivity). For example, a land surface covered by relatively clean glacial ice (high albedo) will reflect more of the Sun's energy than a darker ocean (lower albedo). The darker ocean will absorb more energy and thus add more heat to the Earth's climate system. The albedo of common Earth materials is given in Table 1.3.

A rise in global average surface temperatures is the best-known indicator of a warming climate change. Although each year and even each decade is not always warmer than the last, global surface temperatures have warmed substantially since 1900. Warming land temperatures correspond closely with the observed warming trend over the ocean. Warming oceanic air temperatures, measured from aboard ships, and temperatures of the sea surface itself also coincide, as borne out by many independent analyses.

Land surface temperature is not the same as the air temperature that is included in the daily weather report. Land surface temperatures can vary throughout the year, but equatorial regions tend to remain consistently warm, and Antarctica and Greenland remain consistently cold. Altitude plays a clear role in temperatures, with mountain ranges like the Himalayas, Alps and North American Rockies colder than other areas at the same latitudes.

NASA obtains land surface temperature data from the Moderate Resolution Imaging Spectroradiometer (MODIS) on NASA's TERRA satellite (see Fig. 2.1 for a snapshot of data from TERRA/MODIS).

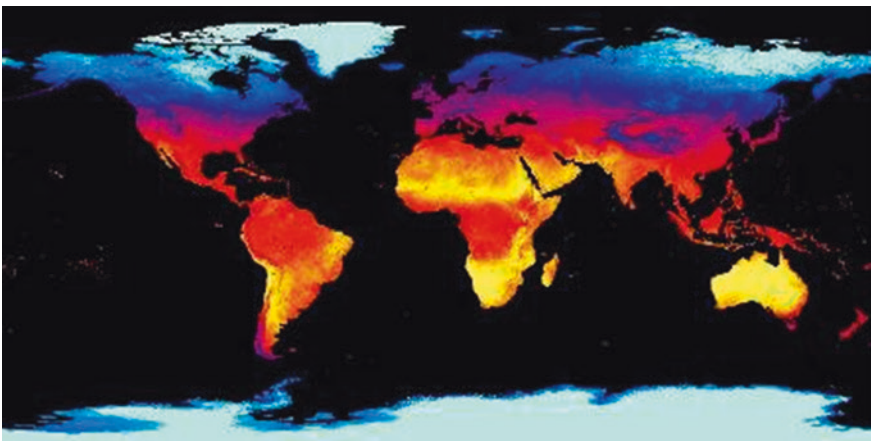


Fig. 2.1 This map shows the temperature of Earth's lands during the daytime as mapped by NASA's TERRA/MODIS (from NASA, public domain)

Scientists can use a thermometer to measure the temperature of any single place and can measure the temperature of the whole world from space using instruments carried on satellites. However, records from satellites date only from 1978.

Scientists want to know the land's temperature for many important reasons. For example, in places where it is too hot or too cold, food crops may not live long enough to reach harvest. Land temperature also influences weather and climate patterns. Land surface temperature (LST) is the mean radiative “skin” temperature of an area of land resulting from the mean balance of solar heating and land-atmosphere cooling fluxes. LST is a basic determinant of the terrestrial thermal behavior, as it controls the effective radiating temperature of the Earth's surface. It determines the surface air temperature and the longwave radiation between the surface and the atmosphere, and is influenced by various surface-atmosphere boundary conditions, such as precipitation and albedo. In addition it influences the partitioning of energy into ground, sensible, and latent heat fluxes.

LST is more closely related to the physiological activities of leaves in vegetated areas, and to soil moisture in sparsely vegetated areas. Differences between simultaneous measurements of LST and air temperature can be as much as 20 K (Kelvin), with LST exhibiting both a strong diurnal cycle and strong heterogeneity imposed by landscape variations.

There has been substantial land surface warming in the Arctic region during the past 50 or 60 years. Arctic land masses have been warming much faster than those of lower latitudes.

Research into temperatures trends, and computing the global temperature are discussed in the following section.

2.7.1 Current and Recent Research

Most research cites land temperatures as being measured. This is actually referring to the lower atmospheric temperature above land, and not the temperature of the land itself. The same is true of ocean temperatures. The readings over ocean are of the lower atmosphere over ocean water and not of the water itself. Measurements of the sea surface temperature are designated SST. The method of referring to lower atmospheric temperatures as “land” and “ocean” temperatures has become standard usage and is supposed to be intuitively obvious. However, this is not true to the uninitiated in climate science and should be clarified in publications aimed at a general audience.

Temperature data (with assessment) are the best indication of a warming planet. Earth's atmospheric temperature records from land stations come from just above the land surface mainly from “weather stations” scattered around the world. Figure 1.5 shows the temperature increase from 1880 to 2014 compared to the 1951 to 1980 global average.

Official temperature records are kept in the U.S. by the National Aeronautic and Space Administration/Goddard Institute of Space Sciences (NASA/GISS),

National Climatic Data Center (NCDC), the National Oceanic and Atmospheric Administration (NOAA), the Global Historical Climatology Network-Daily (GHCN-D), Global Historical Climatology Network-Monthly data set (GHCN-M), and in the U.K. by the Met Office Hadley Centre, and the University of East Anglia Climate Research Unit (CRU).

Other record-keeping agencies in countries throughout the world are too numerous to mention, but most of them get their data from the GHCN, except for the U.K. HadCRUT data and the BEST study (see below). A new dataset was recently compiled by Cowtan and Way (2014) using the Kriging method to interpolate HadCRUT temperature data from areas having few temperature reporting sites.

NASA's Goddard Institute of Space Sciences (GISS) is normally lumped together with NASA as NASA/GISS. NASA/GISS does an analysis of worldwide temperature data. The analysis uses satellite observed nightlights to identify measurement stations located in extreme darkness and adjust temperature trends of urban and peri-urban stations for non-climatic factors, verifying that urban effects on analyzed global change are small. They maintain a running record of any modifications made to the analysis which is available at their website: <http://data.giss.nasa.gov/gistemp/>.

The NASA/GISS GISTEMP analysis is reported by Dr. Reto Ruedy. Also participating in the GISTEMP analysis are Dr. Makiko Sato and Dr. Ken Lo. The research was previously led by Dr. James Hansen, now retired from NASA as of April 2013, but still active as an adjunct professor at Columbia University in New York City.

2.7.2 *The BEST Study*

The Berkeley Earth Surface Temperature (BEST) study is being conducted by a team at the University of California, Berkeley. The project was launched and chaired by Professor Richard Muller, a physicist at the University of California at Berkeley and a former “skeptic” concerning global warming. He was unsure of the methodology of determining global temperature and set out to see for himself whether or not it was accurate.

The BEST study addresses criticisms raised by other climate skeptics about how existing records of the Earth's average surface temperature have been compiled. The BEST group published their initial findings in 2012, which addressed concerns raised by legitimate skeptics about records of surface temperatures, including the “urban heat island effect” and poor weather station siting. These issues were found to not have a significant effect on the global land surface temperature record.

The latest research from the BEST team confirms that the Earth's average land temperature has risen by roughly 0.9 °C since the 1950s and by 1.5 °C over the last 250 years. This is in excess of other existing records, which put average global land temperature rise over the last 50 years at 0.81–0.93 °C.

The BEST study combined 1.6 billion temperature reports from 16 preexisting data archives. After eliminating duplicate records, the current archive contains over 39,000 unique stations. This is roughly five times the 7,280 stations found in the Global Historical Climatology Network Monthly data set (GHCN-M) that has served

as the focus of many climate studies. The GHCN-M is limited by strict requirements. The BEST team developed new algorithms that reduce the need to impose these requirements, and as such they have intentionally created a more expansive data set.

This study is ongoing at Berkeley and is significant in that it substantiates previous studies that have determined the warming of Earth's climate. Additional information concerning the BEST study may be found at the following web site: <http://berkeleyearth.org/about-data-set>.

The Berkeley study was partly funded by one of the billionaire Koch brothers (who are adamantly opposed to the concept of global warming and fund multiple climate change denier efforts). The brothers own Koch Industries, a company that has chemical and fossil fuel operations. They, along with ExxonMobil, have been at the forefront of the denialist propaganda machine using the same tactics that were used by the major tobacco companies in denying that cigarette smoke causes cancer; to cast doubt on the science. If there is doubt, regulations and public support would be delayed and delay means more profits as they continue to sell their fossil fuels, become even wealthier, and pollute the planet.

Berkeley Earth became an independent non-profit 501(c) (3) in February 2013. They have been criticized for only including land station records and no ocean records and partly as a result they have a new global temperature series available. This was created by combining their land record with a Kriged ocean time series using data from HadSST3. The results fit quite well with other published series, and are closest to the new estimates by Cowtan and Way (2014). Both use HadSST3 as the ocean series and use Kriging for spatial interpolation.

2.7.3 The Global Historical Climatology Network

The Global Historical Climatology Network is maintained by NOAA. GHCN-Daily is an integrated database of daily climate summaries from land surface stations across the globe. Like its monthly counterpart (GHCN-Monthly), GHCN-Daily is comprised of daily climate records from numerous sources that have been integrated and subjected to a common suite of quality assurance reviews.

The number of land surface weather stations in the Global Historical Climatology Network (GHCN) has decreased in recent years. This fact is an indication of success in adding historical data. Every month data from over 1,200 stations from around the world are added to GHCN as a result of monthly reports transmitted over the Global Telecommunication System.

2.7.4 National Climatic Data Center

The NCDC is part of NOAA. The National Climatic Data Center (NCDC), located in Asheville, North Carolina, maintains the world's largest climate data archive and provides climatological services and data to every sector of the United States

economy and to users worldwide. Records in the archive range from paleoclimatology to centuries-old journals to data less than an hour old. The Center's mission is to preserve these data and make them available to the public, business, industry, government, and researchers.

NCDC has systematically sought to increase the data holdings in the past through international projects such as the once a decade creation of World Weather Records as well as NCDC's own digitization of select Colonial Era archive data. The creation of the Global Climate Observing System (GCOS) Surface Network is one example of a specific attempt to both enhance data exchange around the world and to identify and select the "best" stations for long-term climate change purposes. The weighting scheme used to rate stations for the initial selection in the GCOS Surface Network (GSN) clearly indicates the biases climatologists have in favor of stations that have been in operation for a long time, that are rural, are agricultural research sites, and are distributed throughout the world with increasing density the farther they are away from the tropics.

Because 71 % of the world is covered by ocean, NCDC also has a strong focus on collection of observations over the World Ocean. The global ocean temperature analysis is primarily based on buoy and ship observations from the International Comprehensive Ocean Atmosphere Dataset (ICOADS), while monthly data updates come from the Global Telecommunications System (GTS). NCDC is active in a continuing multi-decadal effort to digitize historical ocean observations that contribute to ICOADS. The number of sea surface temperature observations in ICOADS has increased due to recent digitization by NCDC. Other parts of NOAA are involved in ocean buoy deployments that also contribute to ICOADS and the GTS data streams. NOAA continues to seek to increase the amount of data available for global analyses.

2.7.5 The Climate Research Unit at the University of East Anglia, U.K.

The Climatic Research Unit (CRU) at the University of East Anglia is widely recognized as one of the world's leading institutions concerned with the study of natural and anthropogenic climate change. The aim of the Climatic Research Unit (CRU) is to improve scientific understanding in:

- Past climate history and its impacts;
- The course and causes of climate change during the past and present centuries; and
- Prospects for future climate.

2.7.6 The "Hockey Stick"

Probably the most famous scientific illustration of all time in climate science was produced in a paper by Michael Mann and colleagues and reproduced by the IPCC in their 2001 assessment report. It became famous because of its shape and was immediately dubbed the "hockey stick." The original can be seen in Fig. 2.2. The

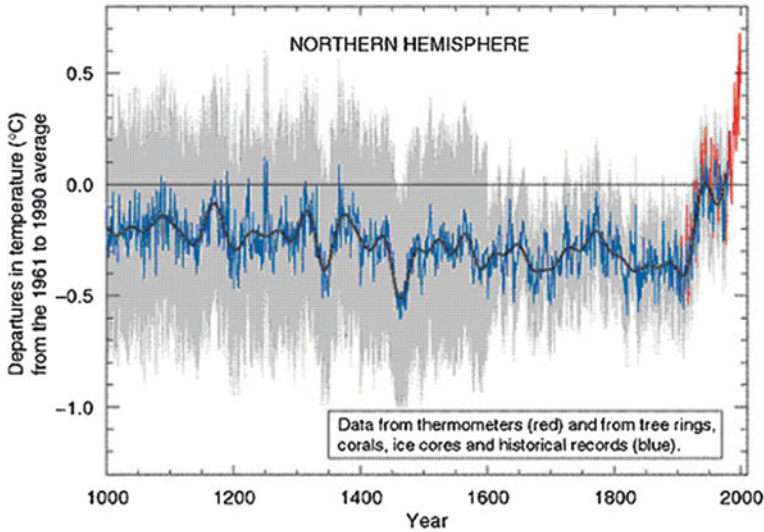


Fig. 2.2 The original “hockey stick” published by Mann et al. (1999)

graph shows in spectacular fashion that the warming in the late 20th century is so rapid that it may be unique, at least for the past 1,000 years.

The basic shape of the graph has been seen in several other reports, one of the most recent by Marcott et al. (2013) appearing in the prestigious journal *Science*, that shows the rate of warming over the past century is very rapid and probably unprecedented for the past 11,300 years.

2.8 Solar Irradiance

Solar irradiance was introduced in Sect. 1.7. Irradiance is the amount of light energy from one thing hitting a square meter of another each second. With solar irradiance, the light energy is from the Sun.

2.8.1 Research in Solar Irradiance

Prior to 1979 astronomers and Earth scientists did not have accurate data on the total amount of energy from the Sun that reaches the Earth’s outermost atmosphere. Variable absorption of sunlight by clouds and aerosols prevented researchers from accurately measuring solar radiation before it strikes the Earth’s atmosphere. The launch of the Nimbus-7 satellite in 1978 changed all that. The Earth Radiation Budget (ERB) instrument on the satellite measured levels of solar radiation just before it strikes the Earth’s atmosphere.

NASA launched the Solar Radiation and Climate Experiment (SORCE) satellite on January 25, 2003. On board SORCE are four instruments that improve the accuracy of the measurements of solar energy. All instruments take readings of the Sun during each of the satellite's 15 daily orbits. The information is transmitted to ground stations at NASA's Wallops Flight Facility in Virginia and a station in Santiago, Chile. After undergoing internal review at NASA, the data are released to the public.

The Physikalisch-Meteorologisches Observatorium in Davos, Switzerland began the operational measurements of the direct solar irradiance in 1909, initiating the world's longest and still continuing time series of this kind. Research on solar irradiance is ongoing at the Observatorium at Davos.

2.9 Carbon Dioxide's Role in the Greenhouse Effect

Carbon dioxide's role in the greenhouse effect was introduced in Sect. 1.8 where it was seen that carbon dioxide was a very small part of the atmosphere, 0.0400 % but played a very important role in global warming. Thus it is a very important chemical compound from the standpoint of climate change science.

2.9.1 *Research in Carbon Dioxide and Other Greenhouse Gases*

Scientists know a great deal about the greenhouse gases, especially carbon dioxide. Carbon dioxide's physical properties were worked out long ago. It is a naturally occurring chemical compound composed of 2 oxygen atoms each covalently double bonded to a single carbon atom. It is a gas at standard temperature and pressure and exists in Earth's atmosphere in this state. As part of the carbon cycle, plants, algae, and cyanobacteria use light energy to photosynthesize carbohydrate from carbon dioxide and water, with oxygen produced as a waste product. Carbon dioxide is the most important of the greenhouse gases but is not the most effective.

It has been obvious since the late 18th century that the Earth's atmosphere served as a sort of blanket for keeping the planet from becoming too cold. As is often said, this is the "Goldilocks planet," not too hot or too cold, but just right for life to exist and thrive, and this is because of greenhouse gases.

The oceans play a central role in cycling carbon dioxide into and out of the atmosphere, and thus an essential role in regulating climate. There are numerous researchers who have worked on carbon dioxide and the carbon cycle. Taro Takahashi, a geochemist at Lamont-Doherty Earth Observatory, has spent the last five decades measuring the processes of the carbon cycle and deserves credit for recognizing various sinks and sources for carbon dioxide.

The U.S. National Oceanic and Atmospheric Administration (NOAA) Earth System Research Laboratory (ESRL), monitors trends in carbon dioxide. ESRL's

Mauna Loa observatory, began as part of Scripps Oceanographic Institution by Charles David Keeling in 1958, is maintained by NOAA and Keeling's son, Dr. R.F. Keeling. As of February 2014, the continuing of this facility's funding by NOAA was in jeopardy due to budget cuts.

The NOAA Atmospheric Baseline Observatories conduct long-term measurements of atmospheric gases, aerosol particles and solar radiation to provide the basis for assessing the prospects of change in the global climate and health of the atmosphere. The Arctic Atmospheric Observatory program is establishing long-term intensive measurements of clouds, radiation, aerosols, surface energy fluxes and chemistry in three different Arctic climate regimes. These measurements will be used to determine the mechanisms that drive climate change through a combination of process studies, satellite validation and modeling studies.

The main greenhouse gases are water vapor (H_2O), carbon dioxide (CO_2), methane (CH_4), nitrous oxide (N_2O), ozone (O_3) and the chlorofluorocarbons (CFCs). Each of these compounds, plus a few others, traps heat leaving Earth's surface (they trap heat by vibrating in the same wavelength) and re-radiate it back in the direction of the surface (they actually radiate the energy in all directions, just some of it strikes the Earth's surface directly).

Many greenhouse gases occur naturally in the atmosphere, such as carbon dioxide, methane, water vapor, ozone, and nitrous oxide, while others are synthetic. Those that are man-made include the chlorofluorocarbons (CFCs), hydrofluorocarbons (HFCs) and perfluorocarbons (PFCs), as well as sulfur hexafluoride (SF_6). Gases such as carbon dioxide and water vapor occur naturally in the atmosphere, and through humankind's interference with the carbon cycle (through burning forests, or mining, making cement, and burning coal, oil, and natural gas), we artificially move carbon from solid storage on or beneath the Earth (where it has been for millions of years) to its gaseous state, thereby increasing atmospheric concentrations of the gas.

Atmospheric concentrations of the greenhouse gases carbon dioxide (CO_2), methane (CH_4), and nitrous oxide (N_2O) in 2013 exceed the range of concentrations recorded in ice cores during the past 800,000 years.

On 10 May 2013, the concentration of climate-warming carbon dioxide in the atmosphere passed the milestone level of 400 ppm for the first time in human history. The last time so much greenhouse gas was in the air was several million years ago, when the Arctic was ice-free, savannah spread across the Sahara desert and sea level was up to 40 m higher than today.

According to the IPCC AR5 2013, with "very high confidence," the current rates of CO_2 , CH_4 and N_2O rise in atmospheric concentrations and the associated increases in radiative forcing are unprecedented with respect to the "highest resolution" ice core records of the last 22,000 years. There is "medium confidence" that the rate of change of the observed greenhouse gas rise is also unprecedented compared with the lower resolution records of the past 800,000 years.

The mid-Pliocene CO_2 concentration of between 350 and 450 ppm best compares with what we have today (400 ppm) so that the more we can learn about the

conditions during that time will give us insight into what we are facing today and possibly in the near future.

The results of modeling for the IPCC AR5 WG1 report, *The Physical science Basis* (2013) indicate that on a global scale, the largest contributor to mid-Pliocene warmth is elevated CO₂. Global sea level was 25 m higher and the northern hemisphere ice sheet was small and short-lived before the onset of extensive glaciation over Greenland that occurred in the late Pliocene around 3 Ma (million years ago). The formation of an Arctic ice cap is signaled by an abrupt shift in oxygen isotope ratios and ice-rafted cobbles (Heinrich events) in the North Atlantic and North Pacific. Mid-latitude glaciation was probably underway before the end of the Pliocene.

The concentrations of greenhouse gases in Earth's atmosphere are of much interest to climate scientists as they are the major cause of the current warming of the planet. The Integrated Carbon Observation System (ICOS) is a new strategic research infrastructure for the European Union (EU) to quantify the greenhouse gas balance in Europe and adjacent regions. It consists of an integrated network of ecosystem long-term observation sites, a network of atmospheric greenhouse gas concentration sites and a network of ocean observations.

The ICOS project will build an infrastructure for coordinated, integrated, long-term high-quality observational data of the greenhouse balance of Europe and of adjacent key regions of Siberia and Africa. Consisting of a center for co-ordination, calibration and data in conjunction with networks of atmospheric and ecosystem observations, ICOS is designed to create the scientific backbone for a better understanding and quantification of greenhouse gas sources and sinks and their feedback with climate change.

The U.S. Environmental Protection Agency (EPA) is reducing greenhouse gas emissions by promulgating regulations for those who emit these gases. The EPA has recently (January 2014) issued proposed regulations for any new coal-fired power plants that may be built in the future. Unfortunately, they have not yet issued similar regulations for existing power plants.

- The EPA's "Inventory of U.S. Greenhouse Gas Emissions and Sinks," provides the United States' official estimate of total national-level greenhouse gas emissions. This report tracks annual U.S. greenhouse gas emissions since 1990.
- The EPA "Greenhouse Gas Reporting Program" collects and publishes emissions data from individual facilities in the United States that emit greenhouse gases in large quantities.

The main U.S. monitoring station for carbon dioxide, and for maintaining the Keeling curve, is the NOAA observatory at Mauna Loa, Hawaii founded by Charles David Keeling.

The U.K.'s Met Office, Hadley Centre on November 13, 2013 released their report on the global carbon budget.

The land and ocean typically absorb approximately half of anthropogenic emissions. Any change in the efficiency of these sinks will have significant consequences for accumulation of anthropogenic CO₂ in the atmosphere.

2.10 Carbon Dioxide and Carbon

The difference between carbon dioxide and carbon is explained in Sect. 1.9. Basically, one unit of carbon, when oxidized, produces 3.67 units of carbon dioxide.

2.10.1 *The Carbon Cycle*

The carbon cycle is the biogeochemical cycle of carbon, in its various forms, in nature. By far the most carbon within the cycle (37,000 GtC—gigatons of carbon, 1 gigaton = 1 billion tons = 1 petagram) is stored in the deep ocean waters. The main reservoirs of carbon are the deep ocean, the ocean surface, rocks of the Earth's crust, plant biomass, reactive sediments, the atmosphere, and soils. As carbon is transferred from one reservoir to another, carbon moves, or is cycled, throughout the system.

One of the world's leading scholars of the carbon cycle is Dr. David Archer of the University of Chicago. Dr. Archer is the author of several books on climate change/global warming and teaches a popular introductory course in climate science at the university and a cost-free Massive Open Online Course (MOOC). NOAA's ESRL Monitoring Division has the Global Greenhouse Gas Reference Network that monitors the movement of carbon through the cycle.

The time it takes carbon to move through the fast carbon cycle is measured in a lifespan. The fast carbon cycle is largely the movement of carbon through life forms on Earth, or the biosphere. Between 1,000 million metric tons to 100,000 million metric tons of carbon move through the fast carbon cycle every year.

Through a series of chemical reactions and tectonic (mountain-building and plate-moving) activity, carbon takes between 100 and 200 million years to move between rocks, soil, ocean, and atmosphere in the slow carbon cycle. On average, 10–100 million metric tons of carbon move through the slow carbon cycle. In comparison, human emissions of carbon dioxide to the atmosphere are on the order of 35–38 gigatons per year.

The movement of carbon from the atmosphere to the lithosphere (rocks) begins with rain. Atmospheric carbon dioxide combines with water to form a weak acid, carbonic acid that falls to the land surface every time it rains. The acid dissolves rocks (a process called chemical weathering) and releases calcium, magnesium, potassium, or sodium ions. Rivers carry the ions along with carbonic acid to the ocean as part of their dissolved load.

2.10.2 *Current and Recent Research on Carbon*

Most research on aspects of the carbon cycle is conducted by federal agencies in the U.S. and elsewhere. These agencies monitor concentrations of greenhouse gases, their emissions, sinks, and their contamination pathways. The U.S. agencies that monitor the carbon cycle are NASA, U.S. EPA, and NOAA, discussed below.

NASA research on the carbon cycle has involved, as of early 2011, two types of satellite instruments collecting information relevant to the carbon cycle. The Moderate Resolution Imaging Spectroradiometer (MODIS) instruments, flying on NASA's Terra and Aqua satellites, measure the amount of carbon in plants and phytoplankton that turn into plant matter as they grow, a measurement called "net primary productivity." The MODIS sensors also measure how many fires occur and where they burn, especially important as wildfires become larger and burn with more intensity as the ground loses moisture to the atmosphere due to global warming. Wildfires release carbon dioxide to the atmosphere.

Two Landsat satellites provide a detailed view of ocean reefs, what is growing on land, and how land cover is changing. It is possible to see the growth of a city or a transformation from forest to farm. This information is crucial because land use accounts for one-third of all human carbon dioxide emissions.

Future NASA satellites will continue these observations, and also measure carbon dioxide and methane in the atmosphere and vegetation height and structure. All of these measurements will show how the global carbon cycle is changing through time. They will help gauge the impact humans are having on the carbon cycle by releasing carbon dioxide into the atmosphere or finding ways to store it elsewhere. They will also show how the changing climate is altering the carbon cycle, and how the changing carbon cycle is altering our climate.

Most humans, however, will observe changes in the carbon cycle in a more personal way. The carbon cycle is the food we eat, the electricity in our homes, the gas in our cars, and the weather over our heads. We are a part of the carbon cycle, and so our decisions about how we live greatly affect the cycle. Likewise, changes in the carbon cycle will impact the way we live. As each of us better understands our role in the carbon cycle, we can adjust our "carbon footprint."

NOAA is responsible for acquiring and maintaining the global, regional, and local record of CO₂ and other greenhouse gases. NOAA's network is the backbone of the global system embraced by the World Meteorological Organization (WMO) that not only provides accurate and timely information on CO₂ and other gases, but also fosters international cooperation and collaboration on an issue that is of global importance. Maintaining such a network requires a dedication to accuracy, precision, cooperation, and transparency. NOAA's scientists not only are involved in maintaining a large portion of the worldwide network, but also provide the calibration necessary for an integrated network and serve on several advisory groups and expert committees for assuring quality control, improving understanding, and identifying future needs.

U.S. EPA uses national energy data, data on national agricultural activities, and other national statistics to provide a comprehensive accounting of total greenhouse gas emissions for all man-made sources in the United States. EPA is one of the agencies involved in the U.S. CLIVAR program.

U.S. CLIVAR (Climate Variability and Predictability Program) has released a new Science Plan outlining its research goals and strategies for the next 15 years. U.S. CLIVAR is made up of thirteen federal agencies. U.S. CLIVAR is a national research program investigating the variability and predictability of the global

climate system on time scales ranging from seasons to hundreds of years, with a particular emphasis on the role of the ocean.

2.10.3 The Enhanced Greenhouse Effect

The enhanced greenhouse effect was defined in Sect. 1.9.1. It is caused by greenhouse gases added to the atmosphere by humankind. The main gas added by humans is carbon dioxide and this is mainly due to the combustion of fossil fuels. Humans have been taking materials from the Earth that were formed millions of years ago, stored as materials within the Earth, and adding it to the fast carbon cycle on perhaps an unprecedented scale in the history of the planet.

Humans had no idea that the concentration of a greenhouse gas was dramatically increasing in the atmosphere until the Keeling Curve was produced that showed carbon dioxide concentrations continually increasing since 1958. This was a startling discovery!

2.10.4 Climate Sensitivity Research

Climate sensitivity was discussed in Sect. 1.9.4 of this text and research is emphasized in this section. Climate sensitivity is a metric used to characterize the response of the global climate system to a given forcing. (An analogous way to think of climate sensitivity is to consider poking a sleeping bear with a sharp stick and seeing what his reaction will be. The bear's reaction (sensitivity) is a great deal more predictable than is climate sensitivity.)

Climate sensitivity specifically due to CO₂ is often expressed as the temperature change in degrees Celsius associated with a doubling of the concentration of carbon dioxide in Earth's atmosphere, but climate is sensitive to much more complex forcings and feedbacks than just CO₂. There is a great deal of uncertainty associated with climate sensitivity and with both feedbacks and forcings.

Climate scientists often mean different things when they talk about climate sensitivity, so terms need to be well-defined. The equilibrium climate sensitivity (ECS) refers to the equilibrium change in global mean near-surface air temperature that would result from a sustained doubling of the atmospheric equivalent of carbon dioxide concentration, commonly expressed as CO₂-eq.

The IPCC Fourth Assessment Report (AR4) stated that climate sensitivity to a doubling of CO₂ was likely to be in the range of 2–4.5 °C with a best estimate of about 3 °C, and is very unlikely to be less than 1.5 °C. Values substantially higher than 4.5 °C cannot be excluded, but agreement of models with observations is not as good for those values. This is a change from the IPCC Third Assessment Report (TAR), which said it was “likely to be in the range of 1.5–4.5 °C.” In the IPCC AR5 this was changed back to 1.5–4.5 °C. Figure 2.3 shows sensitivity results

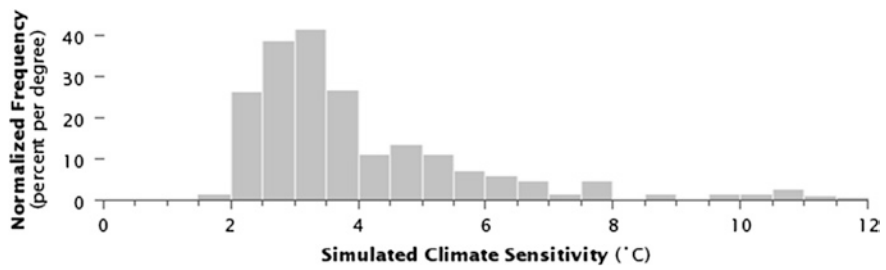


Fig. 2.3 This image shows a frequency distribution of climate sensitivity, based on model simulations. To understand how uncertainty about the underlying physics of the climate system affects climate predictions, scientists have a common test: they have a model predict what the average surface temperature would be if atmospheric carbon dioxide concentrations were to double pre-industrial levels (NASA, public domain)

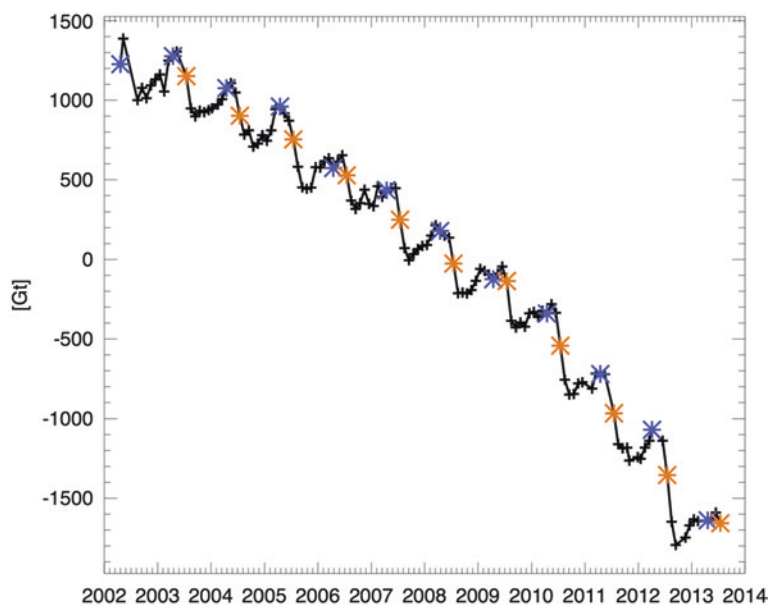


Fig. 2.4 Monthly changes in the total mass (in gigatonnes) of the Greenland ice sheet estimated from GRACE measurements since 2002. The *blue* and *orange* asterisks denote April and July values, respectively (NOAA/NSIDC, public domain)

of modeling studies and it is apparent that they cluster around 3 °C, which is the same result as studies based on paleoclimate, climate models, and empirical data (Fig. 2.4).

In a paper published 16 September 2013 by Jim Hansen and colleagues, in the Philosophical Transactions of the Royal Society (A), entitled “Climate sensitivity, sea level and atmospheric carbon dioxide.” They define climate sensitivity as follows:

“Climate sensitivity (S) is the equilibrium global surface temperature change (ΔT_{eq}) in response to a specified unit forcing (F) after the planet has come back to energy balance, the formula for climate sensitivity (below),

$$S = \Delta T_{eq}/F$$

is the eventual (equilibrium) global temperature change per unit forcing. Climate sensitivity depends upon the condition of the climate at the start of the forcing, climate feedbacks, and the many physical processes that come into play as climate changes in response to a forcing. Positive (amplifying) feedbacks increase the climate response, whereas negative (diminishing) feedbacks reduce the response.”

As we have seen, climate sensitivity partially depends on the initial climate state and should be able to be accurately inferred from precise paleoclimate data. Pleistocene (see Appendix A) climate changes from glacial-interglacial stages yield a fast-feedback climate sensitivity of 3 ± 1 °C for a 4 W/m^2 CO_2 forcing if Holocene warming relative to the Last Glacial Maximum (LGM) is used as calibration, but the error (uncertainty) is substantial and partly subjective because of poorly defined LGM global temperature and human influences in the Holocene (Anthropocene).

Climate sensitivity in terms of a global mean temperature response to a 4 W/m^2 CO_2 forcing is an alternative to defining sensitivity as the climate’s temperature response to a doubling of CO_2 . This introduces a standard forcing into the equation. Feedbacks to the forcing represent the main problem with determining the sensitivity; but the temperature arrived at by several methods is close to 3 °C.

Hansen et al. 2013 point out that humankind is now the dominant force driving changes in the Earth’s atmospheric composition and climate. The largest climate forcing today is the human-made increase in atmospheric greenhouse gases (GHGs), especially CO_2 from the burning of fossil fuels. This point is beyond dispute and can now be considered a fact although some still argue the facts.

2.10.5 Carbon Capture and Sequestration or Carbon Capture and Storage

Carbon Capture and Sequestration or Carbon Capture and Storage (CCS) was introduced in Sect. 1.9.5. With all CCS schemes, it is paramount that CO_2 can never escape to the atmosphere. A CO_2 leak would defeat the whole purpose of the concept of CCS which is to remove carbon dioxide from the fast carbon cycle so that its concentration in the atmosphere can be reduced to 350 ppm and stay there. There are several pilot programs ongoing in countries throughout the world at present. Some of these operations are for temporary storage of CO_2 to be later used for enhanced oil recovery (EOR) and will not meet the specifications for sequestration.

As of September 2012, the Global CCS Institute identified 75 large-scale integrated projects in its 2012 Global Status of CCS report. As of February 2014 there are 21 large-scale projects in operation or construction—a 50 % increase since

2011. These have the capacity to store up to 40 million tonnes of CO₂ per annum, equivalent to 8 million cars being taken off the road.

Six projects, with a combined capture capacity of 10 million tonnes of CO₂ per annum, are in advanced stages of development planning and may make a final investment decision during 2014. *The Global Status of CCS February 2014* report was recently published and is available from the following website: <http://www.globalccsinstitute.com/get-involved/in-focus/2014/02/global-status-ccs-february-2014>.

There are many more of these storage facilities throughout the world related to the oil and gas industry. Some may be candidates for CCS but many will not be. Having CCS facilities related to oil and gas companies is like “having the fox guard the henhouse.”

2.10.6 Tipping Points

A tipping point may be a temperature range; a high, average, or low temperature; a water, land, or air chemical or species. In fact, a tipping point is a point at or beyond which there is no hope for reversal. If humankind has allowed the global temperature to rise at or beyond the point of melting the Greenland ice sheet, which is becoming more apparent as the years pass and the ice cap is still melting, then we have already reached and exceeded the tipping point for the Greenland ice sheet.

There are a number of researchers studying the Greenland ice to try and determine just where it is in the melting process and just what the processes are, how they are working, and if a “tipping point” has been reached. The greatest melt season in Greenland’s history occurred during 2012. The melt season of 2013 was not as great as in 2012; it was still substantial, but of course there was less ice to melt in 2013.

Two prominent researchers on the Greenland ice sheet, among many, that are very concerned about the tipping point are Richard Alley and Jason Box. Dr. Richard Alley has been at the forefront of the Greenland ice research. Dr. Alley is the Evan Pugh Professor of Geosciences at Penn State University, a prolific author, and testifier to committees of the U.S. Congress. He is the author of *Earth: The Operator’s Manual*, *The Two-Mile Time Machine*, and teaches a MOOC on climate change science.

Dr. Jason Box, Geological Survey of Denmark and Greenland (GEUS), has been investigating Greenland ice sheet sensitivity to weather and climate as part of 23 expeditions to Greenland since 1994. Box has authored or co-authored over 50 peer-reviewed publications related to Greenland-cryosphere-climate interactions.

2.11 Climate Forcing and Climate Feedbacks

Climate forcings and feedbacks were introduced in Sect. 1.10. Climate forcing is something that causes the global climate to change. Feedbacks either enhance or retard a forcing.

2.11.1 Research into Climate Forcing and Climate Feedbacks

James Hansen and his colleagues at NASA/GISS have been the research leaders in both climate forcings and feedbacks for some time during the late 20th and into the 21st century. Many of their publications are given at the end of this chapter.

2.12 Climate Models

Climate models were introduced in Sect. 1.11. There are different types of climate models and many different climate modelers. One of the founders of modern climate modeling is Syukuro “Suki” Manabe, a Japanese-born meteorologist and climatologist who worked at NOAA’s Geophysical Fluid Dynamics Laboratory (GFDL), first in Washington, DC and later in Princeton, New Jersey, who pioneered the use of computers to simulate global climate change and natural climate variations.

In 1967 Manabe and Richard Wetherald demonstrated that increasing atmospheric carbon dioxide concentrations would increase the altitude at which Earth radiated heat to space. In 1969 Manabe and Kirk Bryan published the first simulations of the climate of a planet with coupled ocean and atmosphere models, establishing the role of oceanic heat transport in determining global climate. Throughout the 1970s and 1980s Manabe’s research group published seminal papers using these models to explore the sensitivity of Earth’s climate to changing greenhouse gas concentrations. These papers formed a major part of the first global assessments of climate change published by the IPCC.

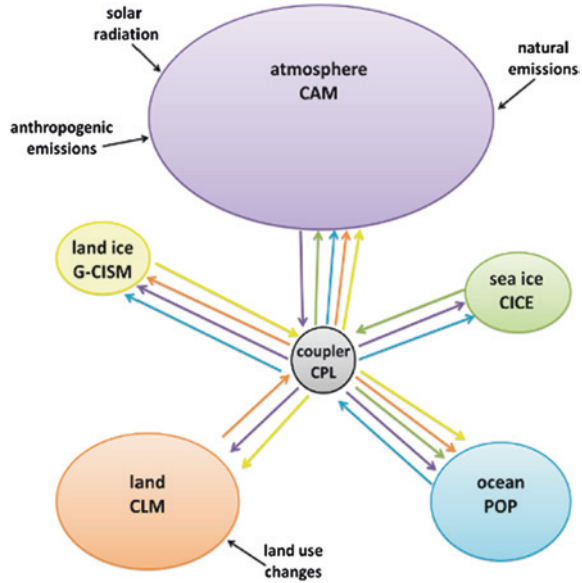
The more complex climate models consist of differential equations representing the processes occurring on land, in the sea, and in the atmosphere. These models simulate the intricacies of Earth’s climate and allow climate scientists to conduct “what if” experiments, a rarity in the Earth sciences (we don’t have another Earth with which to experiment). Figure 2.5 shows some of the input to various climate models (identified by their acronyms).

The most complex models used to simulate the climate are General Circulation Models or General Climate Models (GCMs). In using a climate model, a climate scientist first makes a “control run” to verify if known features of the climate system, such as ocean and atmosphere currents, behave the same as they do over time based on empirical evidence.

Then the climate model is run in changing conditions, simulating the last couple of centuries using the best estimates of the climate “forcings” (or drivers of climate change) at work over that time period. These forcings include solar activity, volcanic eruptions, changing greenhouse gas concentrations, and human modifications of the landscape (such as deforestation, spread of urban areas, etc.).

The results are then compared to actual observations of things like global temperatures, local temperatures, and precipitation patterns. Did the model capture the big picture and how did it handle the finer details? Which fine details did it simulate poorly and why?

Fig. 2.5 Diagram of software architecture for the community earth system model. Coupled models use interacting components simulating different parts of the climate system. *Bubble size* represents the number of lines of code in each component of this particular model (Source Kaitlin Alexander and Steve Easterbrook, from Skepticalscience.com)



Climate models are living scientific tools that are constantly evolving rather than pieces of software built to achieve a certain goal. The models are tested and streamlined to give the best results possible. Many trial runs are completed before the model is ready to be used in climate simulations.

An example of model testing is by using proxy records of climate from cores of ice or ocean sediments that are limited to providing information about the geographic area from which they were collected (see Fig. 2.6). Climate models can help fill in the rest of the global picture. A model simulation of actual events like an immense ice-dammed lake draining into the North Atlantic and disrupting ocean circulation can be compared to a network of proxy records to see if the simulated climate impact is consistent with what the proxies show. If the match is poor, then perhaps the observed change in climate was caused by something else, or perhaps the model needs further tweaking.

Models of actual events or trends are never perfect but they represent one of the best tools available to climate scientists, especially for projecting climate conditions that might be expected in the future. It is the only means by which climate scientists can experiment with the climate.

2.12.1 Current and Recent Research

The majority of GCM climate modeling occurs at national and international research laboratories that have or can access large computing facilities necessary to run the models. Examples include the National Center for Atmospheric Research (NCAR,

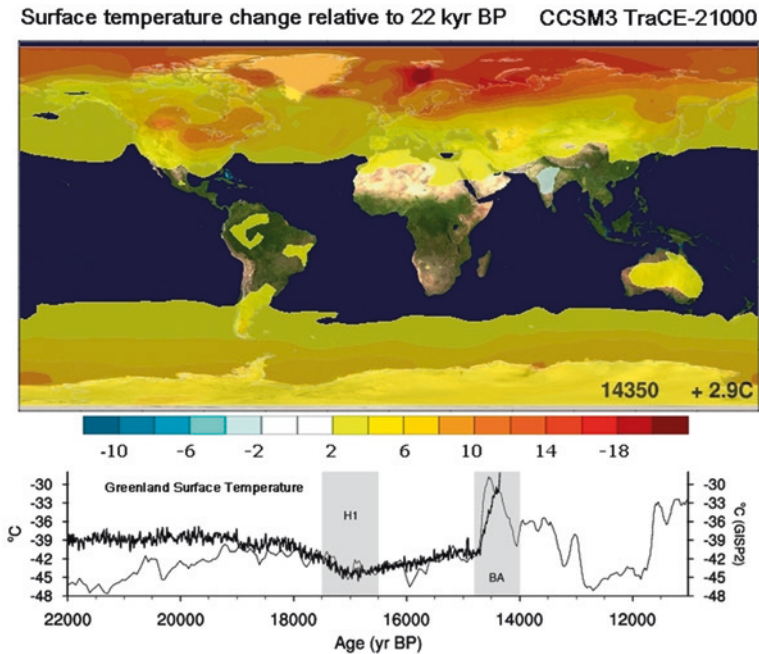


Fig. 2.6 Snapshot from a modeling experiment simulating the last 22,000 years. In the graph at the *bottom*, the *dark line* represents simulated surface temperature over Greenland and the *lighter line* shows data from a Greenland ice core (from NCAR, National Center for Atmospheric Research/University Corporation for Atmospheric Research, public domain)

in Boulder, Colorado, USA), the Geophysical Fluid Dynamics Laboratory (GFDL, in Princeton, New Jersey, USA), NASA/GISS, NOAA, Los Alamos National Laboratory, Lawrence Livermore, Oak Ridge and other National Laboratories in the U.S., the Hadley Centre for Climate Prediction and Research (in Exeter, UK), the Max Planck Institute for Meteorology in Hamburg, Germany, and the Laboratoire des Sciences du Climat et de l'Environnement (LSCE), France, to name but a few.

Working with large entities such as the U.S. government or the international modeling community, one has to become familiar with the “alphabet soup” of multiple acronyms such as those of the following groups: Under the World Climate Research Programme (WCRP) the Working Group on Coupled Modeling (WGCM) established the Coupled Model Intercomparison Project (CMIP) as a standard experimental protocol for studying the output of coupled atmosphere-ocean general circulation models (AOGCMs).

CMIP provides a community-based infrastructure in support of climate model diagnosis, validation, intercomparison, documentation and data access. Virtually the entire international climate modeling community has participated in this project since its inception in 1995. The Program for Climate Model Diagnosis and Intercomparison (PCMDI) archives much of the CMIP data and provides other support for CMIP. PCMDI's CMIP effort is funded by the Regional and Global

Climate Modeling (RGCM) Program of the Climate and Environmental Sciences Division of the U.S. Department of Energy's Office of Science, Biological and Environmental Research (BER) program.

Coupled atmosphere-ocean general circulation models allow the simulated climate to adjust to changes in climate forcing, such as increasing atmospheric carbon dioxide. CMIP began by collecting output from model "control runs" in which climate forcing is held constant. Later versions of CMIP have collected output from an idealized scenario of global warming, with atmospheric CO₂ increasing at the rate of 1 % per year until it doubles at about year 70. CMIP output is available for study by approved diagnostic sub-projects.

Climate modeling activity is extensive both in the United States and internationally. Climate models have advanced over the decades to become capable of providing much useful information that can be used for decision making. Critics of climate modeling do not understand the concept.

Phase three of CMIP (CMIP3) included "realistic" scenarios for both past and present climate forcing. The research based on this dataset provided much of the new material underlying the IPCC Fourth Assessment Report (AR4). CMIP5 is the most recent version and is being used for IPCC AR5.

The DOE-funded Program for Climate Model Diagnosis and Intercomparison (PCMDI) at Lawrence Livermore National Laboratory in California has been instrumental in developing CMIP, including archiving, analysis, and quality control of model output, although CMIP now has broad international institutional support. CMIP has developed into a vital community-based infrastructure in support of climate model diagnosis, validation, intercomparison, documentation, and data access.

Dr. Ben Santer, a Research Scientist for the Program for Climate Model Diagnosis and Intercomparison at Lawrence Livermore National Laboratory in California is one of the world's leading climate researchers and has been instrumental in the development and use of the PCMDI for the modeling community. Unfortunately, Dr. Santer has also been brutally targeted by some of the more aggressive climate change deniers.

2.13 Earth's Atmosphere

Earth's atmosphere was introduced in Sect. 1.12. Research in atmospheric processes related to climate change is being done by climate scientists (climatologists and others), meteorologists, physicists, geochemists, and atmospheric scientists of all kinds. The parts and processes of the atmosphere are fairly well known but mysteries still abound.

A few of the outstanding researchers in atmospheric sciences were recently recognized by the American Geophysical Union (AGU) and are listed below:

- Cecilia Bitz (University of Washington): For advancing our ability to model climate in numerous ways, especially relating to sea ice;
- Paul Ginoux (NOAA GFDL): For sustained pioneering work on aerosols;

- Mark Jacobson (Stanford University): For his dominating role in the development of models to identify the role of black carbon in climate change;
- Sergey Nizkorodov (University of California, Irvine): For elucidating at the molecular level the formation, growth and reactions of organic molecules in the atmosphere;
- Ping Yang (Texas A&M University): For fundamental research in radiative transfer and remote sensing.

Dr. Richard C.J. Somerville is a climate scientist who is a Distinguished Professor Emeritus at Scripps Institution of Oceanography, University of California, San Diego, U.S. His research is focused on critical physical processes in the climate system, especially the role of clouds and the important feedbacks that can occur as clouds change with a changing climate. The influence of clouds on global warming is one of the difficulties with climate models. He has authored over 200 peer-reviewed publications in meteorology and climatology. He is part of a team from U.C. San Diego teaching a MOOC on climate change. There are of course many other outstanding researchers involved with atmospheric processes that are too numerous to mention.

2.14 Earth's Land Surface

The land surface and climate are related mainly through the topography of the land and the latitude at which the land is located. Climate change is more than just warming or cooling of Earth but involves wind, rainfall, snowfall, ice storms, and all other things that we call weather. Weather is short term, climate is long term.

Most carbon in the terrestrial biosphere is stored in forests: they hold 86 % of the planet's terrestrial above-ground carbon and forest soils also hold 73 % of the planet's soil carbon.

When Earth is in the throes of climate change, the weather is also affected. For example, the warming Earth is rapidly removing sea ice from the Arctic Ocean. As Arctic sea ice becomes less, darker ocean water is exposed to Sunlight and it absorbs more of the Sun's energy that was previously reflected by the sea ice. This begins a feedback loop. Less ice causes more warming which causes more ice to melt and so on. The same thing happens to glaciers on land; a feedback loop develops.

Currently, people in the Northern Hemisphere are experiencing what most would deem strange weather; extreme drought in the southwestern U.S., extreme cold and snowfall in the mid-western and northeastern U.S., extreme rainfall and flooding in the British Isles, etc.; and this is all because of climate change/global warming.

Areas with topography consisting of high mountain ranges affect climates in the Rockies, Alps, Andes, and Himalayas. Climates in these areas tend to be colder than in surrounding lowlands. Low-lying areas in mid-latitudes tend to have mild but often changing climate. In some mountainous areas, rain shadows develop on the leeward side of mountains causing a dry climate on the leeward side.

Research in the topics of land, landscapes, and land climates are mainly in the domains of geologists, geographers, and ecologists. The movement of CO₂ from the land biosphere to the atmosphere is an active area of research. On November

21 2013 the U.S. Global Carbon Project released the *Global Carbon Budget 2013* and the new *Global Carbon Atlas*, an online interactive platform with distinctive tools to deliver carbon information to educators and the general public at the following website: <http://www.globalcarbonatlas.org>.

2.15 The World Ocean

The World Ocean was introduced in Sect. 1.14. Warming has been detected to a depth of 2,000 m with the majority of warming from the ocean “skin” at the surface to a depth of 700 m with more recent warming at greater depths. Warming of the ocean will continue as long as Earth has an energy imbalance and for hundreds of years after equilibrium is attained. Today, ocean temperature data are obtained mainly by over 3,600 Argo floats scattered around the world. Argo float data are gathered and studied by scientists at NOAA. Argo is a major contributor to the World Climate Research Program’s (WCRP’s) Climate Variability and Predictability Experiment (CLIVAR) project and to the Global Ocean Data Assimilation Experiment (GODAE). The Argo array is part of the Global Climate Observing System/Global Ocean Observing System (GCOS/GOOS).

2.16 Atmosphere-Land Surface-Ocean Interfaces

The World Ocean plays an important role in regulating the amount of CO₂ in the atmosphere because CO₂ can move quickly into and out of the ocean. Once in the ocean, the CO₂ no longer traps heat. CO₂ also moves quickly between the atmosphere and the land biosphere (plants and animals that are living on land).

Of the three places where carbon is stored (atmosphere, ocean, and land biosphere) approximately 93 % of the CO₂ is found in the ocean. Approximately 90–100 Pg of carbon moves back and forth between the atmosphere and the ocean, and between the atmosphere and the land biosphere.

Sea water and CO₂ mix much more slowly than the atmosphere and CO₂, so there are large horizontal and vertical changes in CO₂ concentration in the ocean. In general, tropical waters release CO₂ to the atmosphere, whereas high-latitude waters take up CO₂ from the atmosphere. CO₂ is also about 10 % higher in the deep ocean than at the surface.

2.16.1 Current and Recent Research

The World Ocean serves humankind as a source of food, to moderate climate, to store minerals, to provide oil and gas from rocks under the sea, to give rise to clouds, to circulate ocean waters, and to provide moisture for rainfall. There is ongoing research in all aspects of oceanography.

There are several oceanographic institutions that study and actively do research in ocean waters of the world. In the U.S., the National Oceanographic and Atmospheric Administration (NOAA) is the lead federal agency conducting oceanographic research. NASA also contributes to oceanic research with instrumentation on numerous satellites.

Each coastal state has one or more oceanographic institutions. There are also universities and colleges with departments of, or courses in, oceanography that do oceanographic research. Woods Hole Oceanographic Institution on the U.S. east coast and Scripps Institution of Oceanography on the west coast are two of the better known research centers. Japan has the Japan Agency for Marine-Earth Science and Technology and the Research Institute for Global Change (RIGC) that has a large contingent of science researchers in global climate science. Australia has the Commonwealth Scientific and Industrial Research Organisation (CSIRO). Canada has the Institute of Ocean Sciences and the Oceanography Department, Dalhousie University, Halifax, Nova Scotia. China has the Institute of Ocean Sciences, Swire Institute of Marine Science, The University of Hong Kong, and the Institute of Oceanology, Chinese Academy of Sciences among others.

In Britain, there is a major research institution: the National Oceanography Centre, Southampton which is the successor to the Institute of Oceanography. University of Exeter in the U.K. does research on climate change and ocean acidification. In Australia, CSIRO Marine and Atmospheric Research, known as CMAR, is a leading center. In 1921 the International Hydrographic Bureau (IHB) was formed in Monaco. Japan also has numerous research centers for oceanography; The Japanese National Oceanographic Data Center archives and disseminates marine data obtained from various Japanese marine research institutes.

Obtaining temperature information from ocean waters has been greatly increased by the Argo Program. Prior to implementing the program, data were obtained by a variety of methods with varying degrees of reliability. The Argo program is uniformly collecting temperature and salinity data from the World Ocean to depths of 2,000 m.

The Argo Program was conceived and designed by a group of U.S. academic and NOAA scientists to take data from the altimetry instruments aboard NASA's Jason and TOPEX/Poseidon satellites that measure differences in ocean surface elevation and combine them with ocean temperature, salinity, and current profiles gathered by Argo floats. The program builds on the ocean sampling method developed during the World Ocean Circulation Experiment (WOCE) of the 1990s by creating a global array of over 3,600 profiling floats spaced roughly in three-degree grids throughout ice-free ocean areas.

WOCE employed radar satellites that continuously monitored the shape of the ocean surface to improve understanding of ocean features and as validation for ocean models. The data collected during WOCE were also used to improve existing ocean models used for global climate prediction. Operational uses included assimilating temperature and salinity data into global ocean models. Battery-operated, neutrally buoyant floats that were the forerunners of today's Argo float collected these data. These early instruments stayed at a specified depth and surfaced every few weeks so that satellites could monitor their position and determine subsurface currents. These early floats were then modified to take temperature and salinity profiles (NOAA 2013).

Argo floats are deployed at the sea surface. The floats sink to a prescribed depth (usually 1,000–2,000 m, sometimes deeper), collecting data on the descent. They rest at depth for a prescribed period and rise back to the surface, collecting data as they rise. Some floats are designed to sink to 2,000 m before ascending to the surface. At the surface, the floats transmit to satellites the positioning and oceanographic data collected since their last transmission. The floats then sink again to repeat the cycle that typically lasts 10 days. Over the course of an average lifetime, an Argo float completes about 150 cycles.

Currently, more than 60 Argo floats are measuring dissolved oxygen using two types of sensors that have returned stable results for over a year. These data may allow scientists to estimate ocean uptake of carbon dioxide, an important piece of the puzzle in understanding the fate of one of the main greenhouse gases (CO₂) that we've seen as a forcing agent in climate change.

Decreasing oxygen levels in the ocean caused by climate change and agricultural (mainly nitrogen) runoff, combined with other chemical pollution and overfishing are undermining the ability of the ocean to withstand so-called “carbon perturbations,” meaning its role as Earth’s “buffer” is seriously compromised. As the ocean goes, so goes all life on Earth.

Springer Publishers (www.springer.com) publishes the Journal of Oceanography. There are several other journals that publish original research on oceanography and ocean contributions to climate change, namely Geophysical Research Letters, Science, and Nature.

Shakhova et al. (2013) point out that ocean bottom water temperatures are increasing more than had been recognized, in particular in near-coastal shallow waters. Stefan Rahmstorf, mentioned previously, is currently one of the leading students of the World Ocean and climate science in general. He is a professor at the Potsdam Institute for Climate Impact Research in Germany. His work focuses on the role of ocean currents in climate change, past and present and he publishes papers on rising sea level. He is a frequent contributor to the website www.realclimate.org, which is a highly recommended site for accurate climate change information.

2.16.2 Ocean Acidification

Ocean acidification was introduced in Sect. 1.16 where it was defined as a reduction in pH. It doesn't mean that the ocean is acidic. Actually, most ocean water has a pH of 8.1, well on the basic side of neutral which is 7.

2.16.3 Ocean Acidification Research

There is little doubt that ocean acidification is caused by the rising concentration of CO₂ in the atmosphere. Ocean waters don't mix as rapidly as does the atmosphere so that CO₂ is not dispersed evenly throughout the World Ocean. There

is currently a great deal of research being conducted on the behavior of CO₂ in marine waters, mainly near the ocean surface in studying the ocean-atmosphere interface gas exchanges. There is also abundant research on the reduction in pH and its effects on marine life.

Trends toward lower pH can now be clearly seen in sustained observations recorded at ocean time series stations and during repeated geochemical surveys. In coming decades, ocean acidification could affect some of the most fundamental biological and geochemical processes of the sea.

Ocean Carbon and Biogeochemistry (OCB) was established in 2006 as one of the major activities of the U.S. Carbon Cycle Science Program, an interagency body that coordinates and facilitates activities relevant to carbon cycle science, climate, and global change issues. The scientific mission of OCB is to study the evolving role of the ocean in the global carbon cycle, in the face of environmental variability and change through studies of marine biogeochemical cycles and associated ecosystems.

Rutgers University, the State University of New Jersey, has an active research program in ocean acidification as do Woods Hole and Scripps oceanographic institutions. NOAA is the lead U.S. government agency for studies involving the ocean.

2.16.4 The “Pause” in Surface Temperature

Since 1998 there has been a slowdown of the temperature rise in the lower atmosphere at Earth’s surface. Climate change deniers have stated that this shows no warming since 1998. There has been plenty of warming since 1998 as discussed below. The rate of warming has actually increased since 1998. We know that the Earth is receiving more energy than it is losing because of the energy imbalance, so the heat has to be going somewhere.

A study by Cowtan and Way (2014), British (Cowtan) and Canadian (Way) researchers, shows that the global temperature rise since 1997–1998 has been greatly underestimated. The reason is because of the data gaps in the weather station network, especially in the Arctic but also in Antarctica and Africa. If these data gaps are filled using satellite measurements and Kriging (a statistical method), the warming trend is more than doubled in the widely used HadCRUT4 data, and the much-discussed “warming pause” has disappeared.

The warmest-year rankings is also evidence that there has been no pause. Of the 11 warmest years on record, 10 are since 1998. It is obvious that there has been no pause (Table 2.1).

Several studies have shown that much of the excess heating of the planet due to the radiative imbalance from ever-increasing greenhouse gases has gone into the ocean, rather than the atmosphere. In a new paper, England et al. (2014) show that this increased ocean heat uptake, which has occurred mostly in the tropical Pacific, is associated with an anomalous strengthening of the trade winds. Stronger trade winds push warm surface water toward the west, and bring cold deeper waters

Table 2.1 The 11 warmest years on record

| Rank — 1 = Warmest | Years | Anomaly (°C) | Anomaly (°F) |
|-----------------------|-------|--------------|--------------|
| 1 | 2010 | 0.66 | 1.19 |
| 2 | 2005 | 0.65 | 1.17 |
| 3 | 1998 | 0.63 | 1.13 |
| 4 (tie) ^a | 2013 | 0.62 | 1.12 |
| 4 (tie) ^a | 2003 | 0.62 | 1.12 |
| 6 | 2002 | 0.61 | 1.10 |
| 7 | 2006 | 0.60 | 1.08 |
| 8 (tie) ^a | 2009 | 0.59 | 1.07 |
| 8 (tie) ^a | 2007 | 0.59 | 1.06 |
| 10 (tie) ^a | 2004 | 0.57 | 1.04 |
| 10 (tie) ^a | 2012 | 0.57 | 1.03 |

Period of record: 1880–2013

^aNote Tie is based on temperature anomaly in °C

The table is drawn from NOAA National Climatic Data Center, State of the Climate: Global Analysis for Annual 2013, published online December 2013, retrieved on February 19, 2014 from <http://www.ncdc.noaa.gov/sotc/global/2013/13>

to the surface to replace them. This happens every time there is a major La Niña event, which is why it is globally cooler during La Niña years.

Santer et al. (2014) in *Nature Geoscience* suggest that 17 small volcanic eruptions since 1999 have had a modest cooling effect, and that incorporating them into models helps explain divergences in temperatures of the lower part of the atmosphere. Both papers England et al. (2014) and Santer et al. (2014) suggest that the factors behind the hiatus are temporary, and do not undermine longer-term projected warming.

2.17 The Cryosphere—Current and Recent Research

The cryosphere was introduced in Sect. 1.19 and everything of which it was comprised was defined. This section will concentrate on research, both recent and current concerning the cryosphere.

Glacial research is conducted by federal governments worldwide, but especially in areas where active glaciers are still present, and also by public and private institutions. One of the foremost glacial programs in the U.S. is at the Ohio State University (OSU) in Columbus, Ohio. OSU has the Byrd Polar Research Center (BPRC). Research at the Center focuses on the role of cold regions in the Earth's overall climate system, and encompasses geological sciences, geochemistry, glaciology, paleoclimatology, meteorology, remote sensing, ocean dynamics, and the history of polar exploration. Much of their research is supported by the U.S. National Science Foundation (NSF). The NSF supports a great deal of cryosphere research especially in the Arctic and Antarctic.

After the Arctic and the Antarctic, the Tibetan Plateau and the Himalayas have Earth's largest store of ice, in more than 46,000 glaciers (many of which are disappearing) and vast expanses of permafrost. It is much less studied than its high-latitude counterparts, even though many more lives depend on it. It has been referred to as Earth's "Third Pole."

The Tibetan Plateau, the "Third Pole" is also known as "Asia's water tower" because its glaciers feed the continent's largest rivers, which sustain 1.5–2 billion people across ten countries. These glaciers are melting fast, filling lakes that can overflow and flood valleys. Yet little is known about how climate change is unfolding there. To attempt to rectify this, Third Pole Environment (TPE), an international program led by the Chinese Academy of Sciences' Institute of Tibetan Plateau Research (ITP) in Beijing, has held workshops for researchers in the region to lay plans to fill the knowledge gap, and discuss findings that add to the urgency. Other countries that have regions affected by the melting ice are also beginning to start research projects at the "third pole."

The U.S. Geological Survey (USGS) studies and monitors glaciers throughout the world. They have monitoring stations at the U.S. glacial sites (Glacier National Park, the Cascade Mountains, and Rocky Mountain National Park).

Glaciers in the Canadian Rockies are studied by the Geological Survey of Canada and by Canadian Province geological surveys. Natural Resources Canada is Canada's foremost geomatics (geospatial technologies) and geoscience organization. Additional information on its mission and functions can be gathered from the following website: <http://www.nrcan.gc.ca/earth-sciences>.

The British Geological Survey (BGS) operates an observatory site at Virkisjökull Glacier in south-east Iceland, studying the evolution of the glacier and the surrounding landscape and their responses to regional climate. Sensors at the site are constantly collecting climate and seismic data. Repeated high resolution surveys study how both the glacier and land surface, and the deposits beneath, change over time.

Virkisjökull is retreating rapidly, like most glaciers in Iceland and around the world. Since 1996, the glacier margin has retreated nearly 500 m.

The BGS interpret the combined results of constant monitoring, using automatic systems, plus field surveying of land-surface change, glacier hydrology, and evolution of the shallow subsurface at the Virkisjökull observatory.

2.17.1 Sea Ice

Sea ice develops when ocean waters reach their freezing point. It doesn't change sea level when it forms or melts because it is formed from sea water. Sea ice forms in polar regions, both the North and South Poles and it affects Earth's albedo.

Sea ice in the Northern Hemisphere has been getting thinner and there is less and less of it since satellite records were first started in 1979. It is a critical component of our planet because it influences climate, wildlife, and people who live in the Arctic. It forms during the winter and melts during the summer. Water below

sea ice has a higher concentration of salt and is denser than surrounding ocean water, so it sinks. In this way, sea ice contributes to the ocean's global "conveyor-belt" circulation. Cold, dense, polar water sinks and moves along the ocean bottom toward the equator, while warm water from mid-depth to the surface travels from the equator toward the poles. Changes in the amount of sea ice can disrupt normal ocean circulation leading to changes in global climate.

When sea ice melts, less Sunlight is reflected and the darker ocean waters absorb more heat. This is the beginning of a feedback loop, as more ocean is heated it causes more sea ice to melt which causes more ocean heating and so on.

The U.S. National Snow and Ice Data Center's (NSIDC) research and scientific data management activities are supported by NASA, the National Science Foundation (NSF), the National Oceanic and Atmospheric Administration (NOAA), and other federal agencies, through competitive grants and contracts. More information about NSIDC can be found at the following website: <http://nsidc.org/cryosphere/>.

2.17.2 Current and Recent Research

The Arctic is still warming at a faster rate than the rest of the planet. The Arctic continued to shift to a warmer, greener state in 2013. That was the headline from the latest "Arctic Report Card," an annual update prepared by scientists from the National Oceanic and Atmospheric Administration (NOAA) and partner organizations such as NASA. Scientists are tracking a variety of environmental indicators, including air temperature, snow cover, sea ice extent, ocean temperature, vegetation growth, and wildlife behavior. In comparison to 2012, most indicators in 2013 were closer to their long-term averages, but signs of change (fueled by long-term warming) were still present.

Most surface waters within the Arctic Circle were warmer than average in summer 2013. Figure 2.7 shows sea ice extent on September 13, 2013. Sea ice extent is solid white. Although some areas experienced unusually cool sea surface temperatures (SSTs) in August 2013, especially in the Chukchi and East Siberian Seas, unusually high temperatures dominated most of the Arctic Ocean and surrounding straits and seas.

Warm waters in the eastern Arctic were probably related to an earlier-than-normal retreat of sea ice from the area and possibly an inflow of warmer water from the North Atlantic. Retreating sea ice would have left the Kara and Barents Seas exposed to warm summer Sunlight. Meanwhile, on the western side of the Arctic, sea ice retreat was later and less extensive than normal, contributing to cooler-than-average surface temperatures in the Chukchi and East Siberian Seas.

By September, surface waters around the Barents Sea Opening (between Svalbard and Scandinavia) were about 5 °F (3 °C) warmer than they were in 2012. Southern Barents Sea temperatures reached 52 °F (11 °C), which is 9 °F (5 °C) warmer than the 1977–2006 average.

Sea ice extent is not the same as the amount of sea ice present. The extent of sea ice is the area covered by sea ice. Climate scientists know that Arctic sea ice is losing volume and this continues year after year. The thinner sheets of sea ice



Fig. 2.7 After an unusually cool summer in the northernmost latitudes, Arctic sea ice appears to have reached its annual minimum extent on September 13, 2013. Analysis of satellite data by the National Snow and Ice Data Center (*NSIDC*) showed that sea ice extent shrunk to 5.10 million square kilometers (1.97 million square miles). The extent of sea ice this September is substantially greater than last year's record low. On September 16, 2012, Arctic sea ice spread across just 3.41 million square kilometers (1.32 million square miles)—the smallest extent ever recorded by satellites and about half the average minimum from 1981 to 2010 (from NASA, public domain)

may drift further than thicker sea ice, but the wider distribution is not indicative of greater ice volume. The thinner slabs of sea ice are more easily distributed by wind and currents, may cover a larger area, but account for less volume and the Arctic is rapidly losing sea ice volume.

In late December 2013 and early January 2014, a research vessel sent to the Antarctic to study the effects of global warming became stuck in sea ice. A second ship was sent to rescue the first and also became stuck. Climate change deniers thought this, along with a prolonged cold spell in the U.S., indicated proof that the Earth was not warming. Observations from satellites and ships indicated that the ships were stuck in a massive amount of sea ice broken off from an ice shelf or glacier and had little relationship to global warming or cooling.

2.17.3 Ice Shelves

Ice shelves are platforms of ice that form where ice sheets and glaciers move into the ocean. Ice shelves exist mostly in Antarctica and Greenland, as well as in the Arctic near Canada and Alaska. They are mainly an extension of glacial ice on

land, so their melting raises sea level. In the colder months, sea ice may form in the vicinity of the ice shelf. When an ice shelf melts, it allows glacial ice to move seaward to replace it and this additional ice raises sea level when it disintegrates. This is happening in Greenland and Antarctica.

Research by glaciologists suggests that glaciers behind ice shelves may accelerate by as much as five times following a rapid ice shelf retreat or collapse. In recent years, ice shelves on the Antarctic Peninsula and along the northern coast of Canada have experienced rapid disintegration. In March 2008, the Wilkins Ice Shelf in Antarctica retreated by more than 400 square kilometers (160 square miles). Later that summer, several ice shelves along Ellesmere Island in Northern Canada broke up in a matter of days (NSIDC 2013).

In contrast, the collapses in previous years happened over a period of weeks, leaving chunky ice and small icebergs. The remaining ice shelves retreated by as much as 90 % and several have experienced repeated collapses (NSIDC 2013).

The northern section of the Larsen B ice shelf, a large floating ice mass on the eastern side of the Antarctic Peninsula, shattered and separated from the continent (in 2002) in the largest single event in a 30-year series of ice shelf retreats in the peninsula.

2.17.4 Icebergs

An iceberg is a body of frozen fresh water that has broken off from a glacier, a larger iceberg, or ice shelf and floats freely in the ocean or lake. Because of density differences, only about 1/10 of an iceberg floats above water, and as a result, icebergs are hazardous to vessels at sea. The North Atlantic and the cold waters surrounding Antarctica are home to most of the icebergs on Earth.

The process that forms icebergs is called calving. Icebergs form when calving takes place along glacial fronts, from ice shelves, and from larger icebergs.

2.17.5 Current and Recent Research

Those agencies cited above in the section on glaciers; NASA, NOAA, universities, and geological surveys monitor and map sea ice. The University of Washington and the University of Otago, Dunedin, New Zealand have active research programs concerning sea ice.

Icebergs are monitored worldwide by the U.S. National Ice Center (NIC). NIC produces analyses and forecasts of Arctic, Antarctic, Great Lakes, and Chesapeake Bay ice conditions. NIC is the only organization that names and tracks all Antarctic Icebergs.

2.17.6 *Permafrost*

Permafrost is ground that is frozen from 1 year to the next, often defined as frozen for two consecutive years. It is found in high latitudes and high altitudes.

Permafrost often contains information about past climate change. Some permafrost has been frozen for tens or hundreds of thousands of years. This old permafrost may contain material from plants or animals that used to live in the area. These remains give hints of what the climate was like when they lived. Scientists also study chemistry of the ice making up permafrost and can learn what the atmosphere was like when the permafrost formed.

Changes in frozen soils are a strong indication of climate change. In remote, cold regions, where people have not taken many temperature measurements in the past, frozen ground is an especially important record. Permafrost regions occupy approximately 22.79 million square kilometers (about 24 % of the exposed land surface) of the Northern Hemisphere and permafrost underlies the ice caps of Greenland and Antarctica, and individual glaciers throughout the world.

Despite its name, permafrost is unstable and not permanent. It is often covered by an “active layer” that regularly melts during the warmer season. Although permafrost can be thousands of years old, it is sometimes newly formed or about to thaw, and it often exists close to its melting point. Its upper few centimeters are referred to as the “active zone” that melts during warmer periods and refreezes during the next cold period.

Permafrost’s “active zone” wreaks havoc on construction in areas where it occurs. Roads and buildings are destroyed as the permafrost melts and landslides occur in mountainous regions. Field observations indicate that permafrost warmed by up to 6 °C during the 20th century. Observations on Svalbard detected extreme permafrost warming during the winter-spring 2005–2006. The thaw apparently resulted from a temperature anomaly where January and April temperatures reached more than 12 °C above the 1961–1990 average.

Observations in Alaska found permafrost warming at most sites north of the Brooks Range from the Chukchi Sea to the border with Canada coincident with statewide air-temperature warming beginning in 1976. The warming occurred primarily in the winter, with little summertime change. This melting permafrost is greatly increasing runoff of fresh water to the Arctic Ocean.

The Arctic contains nearly one-third of the Earth’s stored soil carbon. If the high northern latitudes continue to have a significant temperature increase, the regional soils will begin to release carbon into the atmosphere, which will lead to higher temperatures, fueling the cycle of carbon release and temperature rise. Earth may have already reached a tipping point concerning permafrost as there are numerous reports of methane bubbling to the surface in Arctic area lakes.

Northern latitudes are warming at least twice (2–4 times) as fast as other parts of the world. Included with permafrost in these latitudes is a vast store of carbon

from plants and animals that lived in these areas before formation of the permafrost, or lived in the active layer in warmer months and were encapsulated during refreezing in colder months as the permafrost was being built up. As warming continues and permafrost breaks down, carbon is released largely in the form of methane (CH_4), a greenhouse gas about 84 times more potent over a 20 year period than carbon dioxide (IPCC 2013).

Some researchers have calculated that there are about 1.7 trillion tons of carbon in soils of the northern regions, about 88 % of it locked in permafrost. That is about two and a half times the amount of carbon already in the atmosphere.

Wildfires are increasing across much of the north, and early research suggests that extensive burning could lead to a more rapid thaw of permafrost and release of methane. Fires occur in the warmer months when vegetation takes root in the upper layers. The wildfires hasten melting of permafrost and increase releases of carbon. Wildfires are often set off by lightning and burn vast areas of tundra.

Parts of the tundra are becoming greener each year as more southerly plants migrate northward in the Northern Hemisphere and southward in the Southern Hemisphere.

2.17.7 Current and Recent Research

Active research teams that are currently studying the changing climate of northern latitudes are from various universities and government agencies including the University of Alaska, University of Florida (a surprise), U.S. Department of Energy, NOAA, NASA, the International Arctic Research Center (IARC), the U.S. Arctic Research Commission, the U.S. National Science Foundation (NSF), The Institute of Arctic and Alpine Research at the University of Colorado, Boulder, University of Illinois, NSIDC, Arctic Research in Finland (multiple entities), Developing Arctic Modeling and Observing Capabilities for Long-term Environmental Studies (DAMOCLES), European Space Agency (ESA), and the Russian Academy of Sciences. This is not intended to be a complete list but a guide to those seeking additional information on Arctic research.

2.18 Rising Sea Level

Sea level has been rising worldwide since the Last Glacial Maximum (LGM) about 20,000–18,000 years ago. As Earth temperatures are rising relatively rapidly, sea level is rising relatively rapidly (Fig. 2.8).

To measure sea level, oceanographers at NASA's Jet Propulsion Laboratory (JPL) rely on satellite measurements of sea surface height (which increases as temperature increases) taken by TOPEX/Poseidon and later by Jason-1 satellites. Complementing the Jason-1 satellite data were temperature and salinity

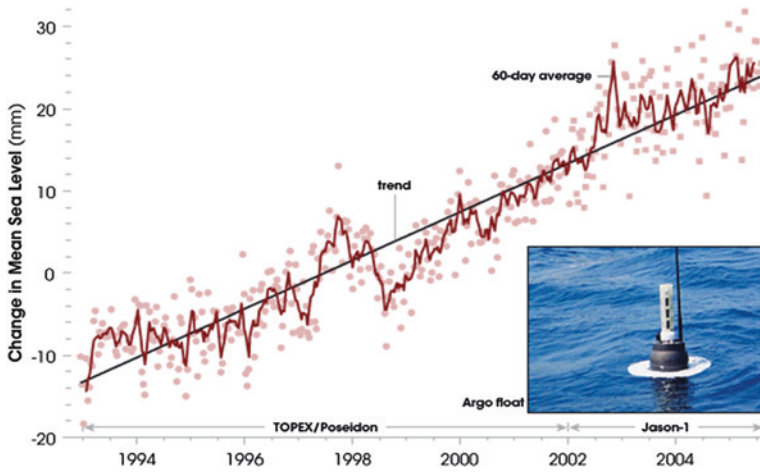


Fig. 2.8 Relying on data from satellites and Argo floats (mechanical devices drifting in the ocean, one of which is shown *above*), a group of oceanographers announced in June 2006 that sea level rose, on average, 3 mm (0.1 in.) per year between 1993 and 2005. This graph shows the increase in mean sea level, measured in millimeters. Researchers attributed about half of that increase to melting ice and the other half to thermal expansion as the ocean absorbs excess energy (from NASA, public domain)

measurements from the Argo float program. By using measurements from a variety of sources, oceanographers can form a clearer picture of the ocean's behavior in different parts of the world.

Another tool useful in the study of sea level is NASA's Gravity Recovery and Climate Experiment (GRACE). GRACE consists of twin satellites that precisely measures surface height not only of the world's ocean, but also the giant bodies of ice that feed it. If ice mass height drops and ocean level rises, GRACE can measure both changes simultaneously. GRACE observations determined that from 2002 to 2005, Antarctic ice lost enough mass to raise global sea level by 1.5 mm (0.05 in.); Earth's ice sheets are melting at the alarming rate of 300 billion tons per year.

In 2012, lower than average sea levels around the west coast of North America were linked to the cool temperatures associated with the negative phase of the Pacific Decadal Oscillation (PDO) (see Fig. 2.9). The sharp divide in the North Atlantic between areas of above-average and below-average sea level are evidence that the warm waters of the Gulf Stream Current reached farther north than usual.

The higher-than-normal sea levels in the western tropical Pacific and Indian Ocean are an imprint left by the La Niña event that continued from 2011 into the first part of 2012. During La Niña, the trade winds along the equator blow more strongly than normal, pushing warm tropical waters westward across the Pacific. The warm waters "pile up" in the western part of the tropical Pacific, spilling over into the Indian Ocean, making sea levels there higher than average (NOAA 2013).

January–December 2012

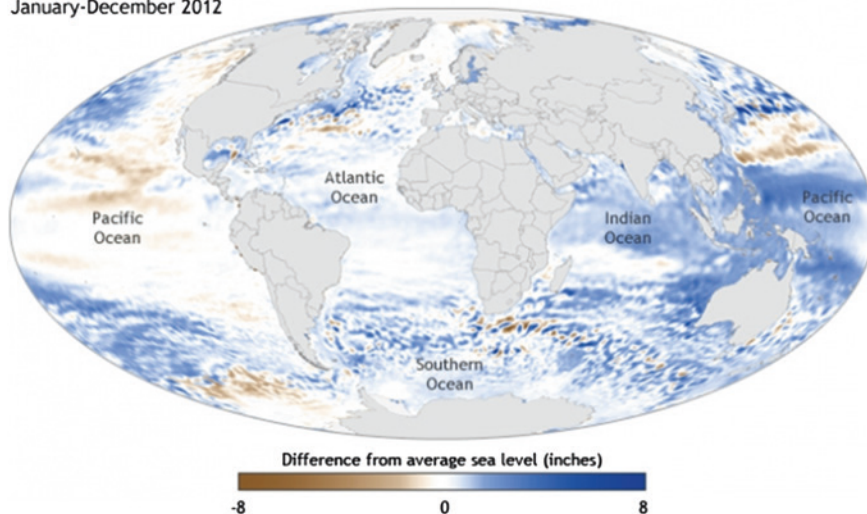


Fig. 2.9 Sea level in 2012 compared to the 1993–2012 average based on AVISO satellite data. Map adapted from Fig. 3.27a in the 2012 BAMS State of the climate report (from NOAA, public domain)

2.19 The Paleocene-Eocene Thermal Maximum

The Paleocene-Eocene Thermal Maximum (PETM) is given a good deal of attention here because the PETM is the definitive geologic analog to Earth's present climatic situation; a time of rapidly increasing global temperature, a rapid rise in sea level, and a rapid increase of carbon dioxide in the atmosphere.

The PETM extreme global warm-up happened 56 million years ago, when Pangaea was splitting into separate continents. It is suspected that huge amounts of carbon were released into the atmosphere and ocean in the form of carbon dioxide and methane. The globe warmed 5–9 °C (9–16 °F). Most ecosystems were able to adapt. But the rate of warming during the PETM pales in comparison to what we're now experiencing. Today, global temperature could be warming at a rate that is too fast for ecosystems to adapt; too fast for land and sea life to migrate. In fact, the current warming may be taking place at a pace not like anything that the Earth has experienced in millions of years. The PETM warming was a roughly 200,000-year long event.

Global temperatures rose by about 6 °C (11 °F) and humans are on track to possibly reach this number. It is for this reason that the PETM is receiving so much attention by global warming researchers. It is now widely accepted that the PETM represents a "case study" for global warming and massive carbon input to Earth's atmosphere.

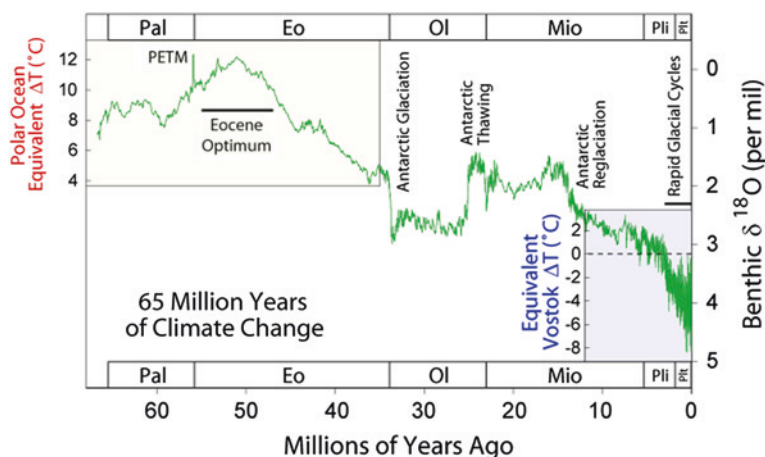


Fig. 2.10 Climate change during the last 65 million years as expressed by the oxygen isotope composition of benthic foraminifera. The Paleocene-Eocene Thermal Maximum (*PETM*) is characterized by a brief but prominent negative excursion, attributed to rapid warming. Note that the excursion is understated in this graph due to the smoothing of data. This figure was prepared by Robert A. Rohde from published and publicly available data and is incorporated into the Global Warming Art project

There are three naturally occurring isotopes of carbon, with ^{12}C (carbon-12) and ^{13}C (carbon-13) being stable, while ^{14}C (carbon-14) is radioactive, decaying with a half-life of about 5,730 years. The isotope carbon-12 (^{12}C) forms 98.93 % of the carbon on Earth, while carbon-13 (^{13}C) forms the remaining 1.07 %. The concentration of ^{12}C is further increased in biological materials because biochemical reactions discriminate against ^{13}C (Fig. 2.10).

Although ^{13}C only constitutes 1.07 % of carbon on Earth, it is still detectable by geochemical analysis. During the PETM there was a distinct reduction in the ^{13}C isotope ($\delta^{13}\text{C}$; change in ^{13}C). At the start of the PETM there was a massive input of ^{13}C -depleted carbon that entered the hydrosphere or atmosphere. Estimates of the relatively sudden addition range from about 2,500 to over 6,800 gigatons of ^{13}C depleted carbon.

Evidence for a massive addition of ^{13}C -depleted carbon at the onset of the PETM comes from two distinct observations. First, a prominent negative excursion in the carbon isotope composition ($\delta^{13}\text{C}$) of carbon-bearing phases characterizes the PETM in numerous widespread locations from a range of environments. Second, carbonate dissolution marks the PETM in sediment cores from the ocean basins.

The Paleocene-Eocene Thermal Maximum (PETM) is the most recent event that we can compare to today's warming. Global temperatures rose at least 5 °C (9 °F), and the PETM warmth lasted 200,000 years before the Earth system was able to remove the extra CO_2 from the atmosphere. The resulting impact on Earth's climate was so severe that a new geological epoch was born, the Eocene.

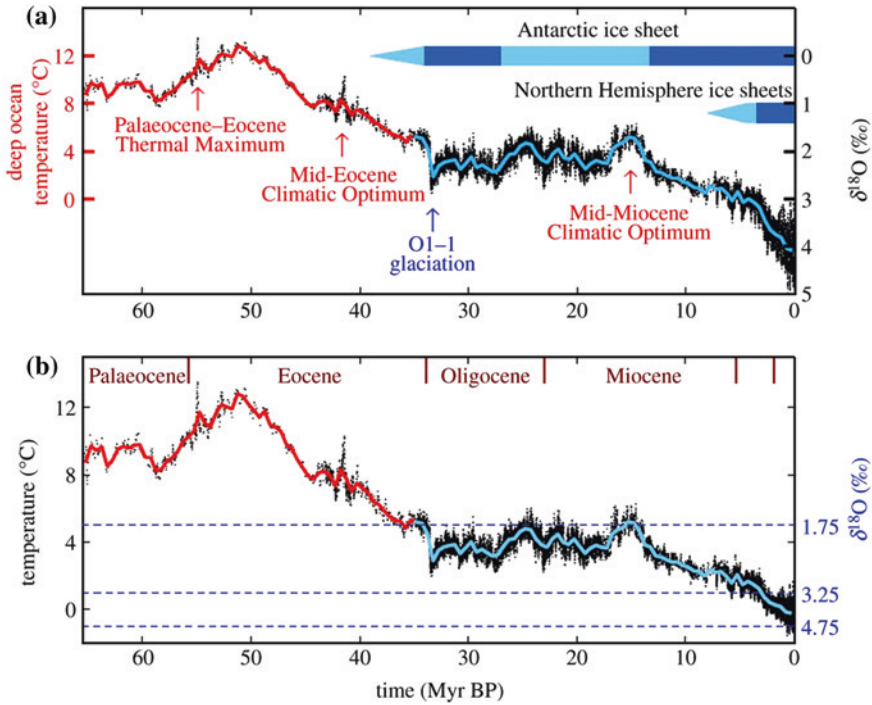


Fig. 2.11 **a** Global deep ocean $\delta^{18}\text{O}$ from Zachos et al. and **b** estimated deep ocean temperature. Black data points are five-point running means of the original temporal resolution; red (left) and blue (right) curves have a 500 kiloyear resolution (Hansen et al. 2013)

2.19.1 Global Warming 56 Million Years Ago

After years of research, the PETM is now thought to have been caused by greenhouse gas emissions, similar to how Earth is warming today. About 56 million years ago, at the end of the Paleocene Epoch (Fig. 2.11; see Appendix A), the supercontinent Pangaea was in the final stages of breaking apart into the continents as we know them today. As the land masses split apart (land masses pulling apart are “stretched” causing a build-up of tensile forces), volcanoes erupted and molten rock seeped toward the Earth’s surface, literally baking carbon-rich sediments and releasing carbon dioxide into the air. During this time, global atmospheric temperature probably increased by several degrees.

The initial increase in temperature triggered events that led to more greenhouse gas emissions and more warming (i.e., positive feedbacks). Climate scientists generally agree that the feedback with the most impact on the atmospheric temperature increase was the melting of methane hydrates in the ocean basins. As the atmosphere warmed the ocean surface, currents (probably not unlike the thermohaline circulation we know today) would have funneled the warm

water to the ocean floor (due to increased density), where it melted the frozen methane hydrates (also referred to as methane clathrates), releasing the potent greenhouse gas (methane) into the ocean and eventually bubbling up to the atmosphere.

2.19.2 PETM Versus Modern Greenhouse Gas Emissions

Temperature rose steadily in the PETM due to the slow release of greenhouse gases (around 2 billion tons per year). Today, fossil fuel burning is leading to 30+ billion tons of carbon released into the atmosphere every year, driving global temperature up at an incredible rate and a rate unknown certainly in human history.

Many of the other climate feedbacks that we either already observe today or expect to experience probably took place during the PETM warming, as well.

2.19.3 PETM Warming Versus Current Warming

During the PETM, around 5 billion tons of CO₂ was released into the atmosphere per year. The Earth warmed around 6 °C (11 °F) over 200,000 years; some estimates are that the warming was more like 9 °C (16 °F). Using the low end of that estimated range, the globe warmed around 0.025 °C per year for 100 years. Today, the globe is warming at least ten times as fast, anywhere from 1 to 4 °C every 100 years. In 2010, our fossil fuel burning released 35 billion tons of CO₂ into the atmosphere. By comparison, volcanoes release only about 0.2 billion tons of CO₂ per year. How fast carbon enters the atmosphere translates to how fast temperature increases, and the environmental and societal consequences of warming at such a speed could be devastating to humankind.

Some of the things that we fear might happen in the not too distant future such as reversed ocean circulation, ocean acidified, permafrost melted, peatlands and forests burned in wildfires happened during the PETM.

2.19.4 PETM Ocean Circulation

There is evidence that during the PETM, large-scale ocean circulation may have reversed, which would have led to enhanced warming. Ocean circulations are largely due to atmospheric circulation, temperature and salinity (salt concentration), and warming of ocean water at high latitudes would have acted to at least slow, if not totally reverse, the “global conveyor belt” (the thermohaline circulation that occurs in the modern ocean).

2.19.5 PETM Sea Level Rise

Since the PETM occurred in an already warm climate (that sets the PETM apart from modern warming), there was very little sea ice and glacial cover to melt, so sea level did not change dramatically. However, there is plenty of ice to melt today on the planet and it is already melting.

2.19.6 PETM Permafrost and Methane Hydrates

Many scientists agree that a major contributor to the PETM warming was the melting of methane hydrates on the seafloor and permafrost at high latitudes. Both of these store immense amounts of carbon deficient in carbon-13 and today constitute a tipping point for the climate. Once hydrates and permafrost begin to melt, the process will be irreversible (permafrost has already started to melt). The reservoirs of methane hydrate stored in marine sediments (500–10,000 billion tons of carbon) and in permafrost (7.5–400 billion tons) are being constantly monitored.

2.19.7 PETM Ocean Acidification

The most disruptive impact during the PETM was likely the exceptional ocean acidification. The ocean naturally absorbs carbon dioxide from the atmosphere, and also from the sea floor (in the form of calcium carbonate dissolution). When excess carbon dioxide enters the atmosphere, the ocean attempts to balance the system by absorbing more of it. Numerous studies have shown that this was the case during the PETM.

2.20 Species Extinction

Climate change/global warming is changing the environment of all living things on Earth. Those organisms with narrow limits of tolerance will be the first to go extinct and many already have. Extinction is permanent unless DNA is somehow preserved.

Specific examples of species at risk for physiological reasons include mountain species such as pikas (small bunny-like lagomorphs that only live in cold climates) and endemic Hawaiian Mauna Kea silverswords, which are restricted to cool temperatures at high altitudes. Species like polar bears are at risk because they depend on sea ice to facilitate their hunting of seals and Arctic sea ice conditions are changing rapidly, as we have seen. Other species are prone to extinction as changing climate causes their habitats to alter such that growth, development, or reproduction of individuals are inhibited.

The distinct risks of climate change exacerbate other widely recognized and severe extinction pressures, especially habitat destruction, competition from invasive species, and unsustainable exploitation of species for economic gain, which have already elevated extinction rates to many times above background rates. If unchecked, habitat destruction, fragmentation, and over-exploitation, even without climate change, could result in a mass extinction within the next few centuries equivalent in magnitude to the one that wiped out the dinosaurs. With the ongoing pressures of climate change, comparable levels of extinction conceivably could occur before the year 2100; indeed, some models show a crash of coral reefs from climate change alone as early as 2060 under certain scenarios.

Loss of a species is permanent and irreversible, and has both economic impacts and ethical implications. The economic impacts derive from loss of ecosystem services, revenue, and jobs, for example in the fishing, forestry, and ecotourism industries. Ethical implications include the permanent loss of irreplaceable species and ecosystems as the current generation's legacy to the next generation.

Earth is currently experiencing its sixth mass extinction of plants and animals, the sixth wave of extinctions in the past half-billion years. The planet is currently experiencing the worst of species die-offs since the loss of the dinosaurs 65 million years ago and very little is presently being done about it.

Because the rate of change in our biosphere is increasing, and because every species' extinction potentially leads to the extinction of others bound to that species in a complex ecological web, numbers of extinctions are likely to snowball in the coming decades as ecosystems unravel due to global warming, either directly or indirectly.

Dr. Terry Root, Professor and Senior Fellow at the Stanford Woods Institute for the Environment, is blunt about the evidence she's collected in her studies of the effect of temperature on wildlife. Root says we're en route to a mass extinction in which as many as half the world's species will die out, and she sees no way off that path.

The IPCC tells us that this century could see the extinction of 50 % of the species now living on Earth. It is not a pleasant scenario.

2.21 Deforestation

Cutting down trees has been characteristic of areas humans have invaded throughout the history of the species. Humans have always needed room for their various activities and trees just "got in the way." This was certainly the case when humans first left East Africa and travelled through the Middle-East and into forest-covered Europe and Asia, then into North and South America. They cut down trees to expand their settlements, their hunting and gathering areas, and later for agriculture.

The Amazon rain forest is one of the most diverse places on Earth, home to unknown thousands of species, including thousands of trees. Until just recently, scientists didn't know which trees dominated the forest and where different tree species were located. A new study published in the Oct. 17, 2013, issue of the journal *Science* examined an area of the Amazon and found that only a few dozen tree species are very common, or "hyperdominant."

With help from Google Earth Engine, the World Resources Institute launched Global Forest Watch, an online forest monitoring and alert system that allows individual computer users to watch forests around the world change in an almost real-time stream of imagery. Additional information can be found at the following website: <http://www.wri.org/events/gfwlaunch>.

2.22 Ecosystem Impacts

Some of the impacts of global warming already imposed on ecosystems today are such things as ecosystem processes that control expansion, perpetuity, and decomposition. There have been shifts in the geographic ranges of aquatic species, some cold water species have had their ranges restricted while warm water species have seen their ranges expand. Animals and plants are migrating to higher elevations and latitudes and leaving behind those that can't migrate.

Seasons of the year are changing with summers getting longer and winters shorter and this is disrupting breeding seasons and migratory patterns of birds. The season changes are also causing insect pests' lifespans, like the pine bark beetle in the Rocky Mountains of western North America, to continue so that one generation overlaps another thereby rapidly increasing the population of hungry beetles.

Forest fires are wreaking havoc throughout western North America, Russia, Australia, and elsewhere and thereby destroying niches and habitats in their paths. Disease pathogens are spreading from the equatorial regions to higher latitudes.

Deserts and dry lands are likely to become hotter and drier, feeding a cycle of invasive plants, fire, and erosion. Coastal and near-shore ecosystems are already under multiple stresses from rising sea level and pollution. Climate change and ocean acidification will worsen these stresses.

Arctic sea ice ecosystems are already being adversely affected by the loss of summer sea ice and further changes are expected as the Arctic continues to warm about twice as fast as the rest of the world.

The habitats of some mountain species, such as the pika, and cold water fish, such as salmon and trout, are very likely to contract in response to global warming. Some of the benefits ecosystems provide to society will be threatened by climate change, while others will be enhanced. There are already migration of various species of land mammals poleward or to higher elevations.

Extinction of some benthic foraminifera (bottom-dwelling single-celled organisms with shells or tests). Coral bleaching (dead corals are bleached white) due to ocean acidification has been observed in large numbers of coral reef ecosystems.

Famine and malnutrition due to drought have been found in species in threatened ecosystems. Species endangerment (e.g., polar bears, marine turtles, North Atlantic whales, giant pandas, orangutans, elephants) is increasing. There has been increased mortality in organisms from extreme weather and malnutrition, increase in disease vectors, decrease in agricultural yield, mass wildlife migration and extinction, total societal collapse in many ecosystems.

2.23 Research Programs

At the national level in the United States, the U.S. Global Change Research Program coordinates the world's most extensive research effort on climate change. In addition, NASA, NOAA, the U.S. Environmental Protection Agency (EPA), the U.S. Geological Survey (USGS) and other federal and state agencies are actively engaging the private sector. Many university and private scientists also study climate change. In the U.S., universities with well-established programs in climate science are Rutgers University, Pennsylvania State University, University of New Hampshire, University of Chicago, Oregon State University, University of Virginia, University of California-San Diego, University of Washington, Louisiana State University, and Ohio State University. There are also numerous other U.S. universities and colleges that have relatively new programs in climate science.

In the U.K., The Met Office hosts the National Climate Information Centre (U.K. NCIC) which holds national and regional climate information for the United Kingdom. Digitized records for the whole country date back to 1910 and data for the Central England Temperature record dates back to 1654, the world's longest instrumental record.

The U.K.'s University of East Anglia has the Climate Research Unit (CRU), one of the world's leading institutions concerned with the study of natural and anthropogenic climate change. Other U.K. universities with well-established climate science programs are University College London, University of Exeter, University of Leicester, Imperial College London, King's College London, University of Cambridge, and the University of Oxford.

In Australia, University of Melbourne, University of Queensland, University of New South Wales, Macquarie University, Sydney, Monash University, University of Western Australia, and the Australian National University, Canberra.

Other countries have similar climate research programs.

2.24 Status of Climate Change Science—End of February 2014

The status of climate change science at the end of February 2014 is, in one word, strong. The subject has attracted some of the best scientific minds in the world. The problems faced by those who study climate are not with the science, they are with the fossil fuel industry and the doubters controlled or influenced by them.

The current status of climate change science at the time of this writing (February 2014) is that it is progressing well with many research projects underway to answer many of the questions that remain unresolved. A great number of modeling experiments are being completed. Prominent climate scientists are an impressive group and listing their names would not serve any purpose. They know who they are.

Climate scientists have been warning of the dangers of global warming especially since the 1988 appearance of James Hansen before Congress. There were warnings before 1988 but they were largely ignored. Unfortunately, most of the warnings today are also largely ignored. Most politicians in particular don't seem to understand the science, especially those with conservative ideologies even though the scientific evidence of global warming happening now is overwhelming. Global warming does not favor any one politic or persuasion. It does not care whether you are conservative or liberal, white, black, green or brown. It is affecting everyone on Earth to some degree; and climate scientists are telling the world to get ready for the next degree because the warming will only get worse with time.

What is it going to take to get the attention of climate change/global warming deniers in the U.S. Congress? This writer's efforts are directed at getting them out of office by using the ballot box as soon as possible; and I hope others' efforts are the same.

The 19th Conference of the Parties of the UN Framework.

Convention on Climate Change (COP 19), held in November 2013 in Warsaw, Poland, was warned by professor of climatology Mark Maslin (University College London): "We are already planning for a 4 °C world because that is where we are heading. I do not know of any scientists who do not believe that."

The following is a bulleted attempt to bring the reader up to date on climate change science from January 2013 (the publication of Farmer and Cook's *Climate Change Science: A Modern Synthesis*, January 12 2013) through February 2014. The bulleted items below are not in chronological order or in order of importance, but they are all significant to climate change.

Some of these items, following sometimes disturbing results of recent research (January 2013–February 2014), have been shared with me by Professor Guy McPherson, Professor Emeritus of Natural Resources and Ecology and Evolutionary Biology, University of Arizona, Tucson. Professor McPherson has kindly allowed me editorial license which I have used sparingly. Any errors of omission or commission are the property of this writer and not Professor McPherson.

- Nearly 500 climate-related laws have been enacted in 66 countries that together are responsible for nearly 90 % of the world's heat-trapping emissions, according to an international survey of climate legislation released February 27 2014 by the London-based Global Legislators Organisation (GLOBE) and the Grantham Institute at the London School of Economics. (From *Nature*, "National policies advance as climate summit approaches," News release February 27 2014).
- As reported in the journal *Global and Planetary Change* in April 2013, almost every molecule of atmospheric carbon dioxide (CO₂) added since 1980 has come from human emissions. A few molecules from volcanic eruptions may also be present in the atmosphere.
- Carbon dioxide concentration in the atmosphere has now topped 400 ppm. On May 9, 2013 the daily mean concentration of carbon dioxide in the atmosphere of Mauna Loa, Hawaii, surpassed 400 parts per million (ppm) for the first time since measurements began in 1958. Independent measurements made by both NOAA and the Scripps Institution of Oceanography were approaching this level during the

previous week. It marks an important milestone because Mauna Loa, as the oldest continuous carbon dioxide (CO₂) measurement station in the world, is the primary global benchmark site for monitoring the increase of this potent heat-trapping gas.

- Methane hydrates are bubbling out of the Arctic Ocean (*Science*, March 2010). According to NASA's CARVE project, these plumes were up to 150 km across as of mid-July 2013. In early November 2013, methane levels well in excess of 2,600 ppb were recorded at multiple altitudes in the Arctic. Later that same month, Shakhova and colleagues (see Shakhova below) published a paper in *Nature Geoscience* suggesting "significant quantities of methane are escaping the East Siberian Shelf" and indicating that a 50-billion-tonne "burst" of methane could warm Earth by 1.3 °C. Such a burst of methane is "highly possible at any time." By 15 December 2013, methane bubbling up from the seafloor of the Arctic Ocean had sufficient force to prevent sea ice from forming in the area. The "methane bomb hypothesis" is not dead yet. (Dr. N. Shakhova leads the Russia-U.S. Methane Study at the International Arctic Research Center, at the University Alaska Fairbanks and the Pacific Oceanological Institute, Far Eastern Branch of Russian Academy of Sciences).
- Methane seeps are appearing in numerous locations off the east coast of the United States, leading to rapid destabilization of methane hydrates (according to the 25 October 2013 issue of *Nature*).
- On land, anthropogenic emissions of methane in the United States have been severely underestimated by the Environmental Protection Agency, according to a paper in the 25 November 2013 issue of *Proceedings of the National Academy of Sciences*. This figure is 1,100 ppb higher than pre-industrial peak levels. Methane release tracks closely with temperature rise throughout Earth history—specifically, Arctic methane release and rapid global temperature rise are interlinked—including a temperature rise up to about 1 °C per year over a decade, according to data from ice cores.
- Methane is being released from the Antarctic, also (*Nature*, August 2012). According to a paper in the 24 July 2013 issue of *Scientific Reports*, melt rate in the Antarctic has caught up to the Arctic and the West Antarctic Ice Sheet is losing over 150 cubic kilometers of ice each year according to the European Space Agency's CryoSat observations published 11 December 2013, and Antarctica's crumbling Larsen B Ice Shelf is poised to finish its collapse, according to a glaciologist at the *National Snow and Ice Data Center (NSIDC)* at the annual meeting of the American Geophysical Union (AGU) December 2013.
- The Intergovernmental Panel on Climate Change (IPCC) admits global warming is irreversible without geoengineering in a report released 27 September 2013.
- As pointed out in the 5 December 2013 issue of *Earth System Dynamics*, known strategies for geoengineering are unlikely to succeed.
- As published in the 1 August 2013 issue of *Science*, in the near term Earth's climate will change orders of magnitude faster than at any time during the last 65 million years, since the extinction of the dinosaurs.
- Without the large and growing number of self-reinforcing feedback loops humans have triggered recently, the 5 °C rise in global average temperature 55 million years ago during a span of just a few years, and it looks like we should be addressing the 6–10 °C of warming we are working toward.

- *The New Yorker* posits a relevant question on 5 November 2013: “Is It Too Late to Prepare for Climate Change?”
- The *Geological Society of London* points out on 10 December 2013 that Earth’s climate “could” be twice as sensitive to atmospheric carbon as previously believed.
- According to Yvo de Boer, who was executive secretary of the *United Nations Framework Convention on Climate Change* in 2009, when attempts to reach a deal at a summit in Copenhagen crumbled with a rift between industrialized and developing nations, “the only way that a 2015 agreement can achieve a 2-degree goal is to shut down the whole global economy.”
- Drought in the Amazon triggered the release of more carbon than the United States in 2010 (*Science*, February 2011). In addition, ongoing deforestation in the region is driving declines in precipitation at a rate much faster than long thought, as reported in the 19 July 2013 issue of *Geophysical Research Letters*.
- Russian forest and bog fires are growing (NASA, August 2012), a phenomenon consequently apparent throughout the northern hemisphere (*Nature Communications*, July 2013).
- A paper in the 22 July 2013 issue of the *Proceedings of the National Academy of Sciences* indicates boreal forests are burning at a rate exceeding that of the last 10,000 years.
- Exposure to sunlight increases bacterial conversion of exposed soil carbon, thus accelerating thawing of the permafrost and the release of methane (*Proceedings of the National Academy of Sciences*, February 2013).
- Summer ice melt in Antarctica is at its highest level in a thousand years. Summer ice in the Antarctic is melting 10 times quicker than it was 600 years ago, with the most rapid melt occurring in the last 50 years (*Nature Geoscience*, April 2013).
- Although scientists have long expressed concern about the instability of the West Antarctic Ice Sheet (WAIS), a research paper published in the 28 August 2013 of *Nature* indicates the East Antarctic Ice Sheet (EAIS) has undergone rapid changes in the past five decades. The latter is the world’s largest ice sheet and was previously thought to be at little risk from climate change. But it has undergone rapid changes in the past five decades, signaling a potential threat to global sea levels. The EAIS holds enough water to raise sea levels more than 50 m.
- Increased temperature and aridity in the southwestern interior of North America facilitates movement of dust from low-elevation deserts to high-elevation snow-pack, thus accelerating snowmelt, as reported in the 17 May 2013 issue of *Hydrology and Earth System Sciences*.
- Floods in Canada are sending pulses of silty water out through the Mackenzie Delta and into the Beaufort Sea, thus painting brown a wide section of the Arctic Ocean near the Mackenzie Delta (NASA, June 2013).
- Surface meltwater draining through moulins and cracks in an ice sheet can warm the sheet from the inside, softening the ice and letting it flow faster, according to a study accepted for publication in the *Journal of Geophysical Research: Earth Surface* (July 2013). It appears a Heinrich Event has been triggered in Greenland. Consider the description of such an event as provided by Robert Scribner on 8 August 2013: “In a Heinrich Event, the melt forces eventually reach a tipping point. The warmer water has greatly softened the ice sheet. Floods of water flow

out beneath the ice. Ice ponds grow into great lakes that may spill out both over top of the ice and underneath it. Large ice dams may or may not start to form. All through this time ice motion and melt is accelerating. Finally, a major tipping point is reached and in a single large event or ongoing series of such events, a massive surge of water and ice flush outward as the ice sheet enters an entirely chaotic state. Tsunamis of melt water rush out bearing their vast flotillas of icebergs, greatly contributing to sea level rise. And that's when the weather really starts to get nasty. In the case of Greenland, the firing line for such events is the entire North Atlantic and, ultimately the Northern Hemisphere.”

- Breakdown of the thermohaline conveyor belt is happening in the Antarctic as well as the Arctic, thus leading to melting of Antarctic permafrost (*Scientific Reports*, July 2013).
- Ocean acidification leads to release of less dimethyl sulfide (DMS) by plankton. DMS shields Earth from radiation. (*Nature Climate Change*, online 25 August 2013). Plankton forms the base of the marine food web, and are on the verge of disappearing completely, according to a paper in the 17 October 2013 issue of *Global Change Biology*.
- Rising ocean temperatures will upset natural cycles of carbon dioxide, nitrogen and phosphorus, hence reducing plankton (*Nature Climate Change*, September 2013). Plankton forms an essential base of the food chain.
- Small ponds in the Canadian Arctic are releasing far more methane than expected based on their aerial cover (*PLoS ONE*, November 2013).
- Arctic ice is growing darker, hence less reflective (*Nature Climate Change*, August 2013) and thus increasing Arctic warming.
- The *New York Times* reports hotter, drier conditions leading to huge fires in western North America as the “new normal” in their 1 July 2013 issue.
- Loss of Arctic sea ice is reducing the temperature gradient between the poles and the equator, thus causing the jet stream to slow and meander. One result is the creation of weather blocks such as the recent very high temperatures in southern Alaska. As a result, boreal peat dries and catches fire like a coal seam. The resulting soot enters the atmosphere to fall again, coating the ice surface elsewhere, thus reducing albedo and hastening the melting of ice. Each of these individual phenomena has been recently reported (July 2013).
- Plankton forms the base of the marine food chain and is on the verge of disappearing completely, according to a paper in the 17 October 2013 issue of *Global Change Biology*.
- Sea-level rise causes slope collapse, tsunamis, and release of methane, as reported in the September 2013 issue of *Geology*. In eastern Siberia, the speed of coastal erosion has nearly doubled during the last four decades as the permafrost melts.
- Meanwhile, Arctic drilling was fast-tracked by the Obama administration during the summer of 2012; but Shell Oil has withdrawn their plans to begin drilling in the summer of 2014.
- The IPCC, on 30 September 2013, released a final draft of the first volume of their latest Assessment Report (AR5), *The Physical Science Basis*, and the first of several volumes making up the AR5. The remaining volumes will be released during 2014.

- The IPCC changes made from the last report, AR4 released in 2007, are many but two stand out: (1) a revision in their estimate of sea level rise in a worst case, to 1 m by 2100; and (2) a change in climate sensitivity at the low end of the range to 1.5 °C from 2 °C.
- There was great concern throughout 2013 into 2014 about the severe drought in California and the southwestern U.S., and the link to global warming.
- Australia reported its hottest year (2013–2014) in their history of record keeping.
- The British Isles have been ravished (2013–2014) by intense storms causing widespread flooding in the Thames River Valley and elsewhere.
- There was much talk about the “polar vortex” affecting weather in North America during the winter of 2013–2014. One conservative radio commentator stated that liberals had invented the “polar vortex” to explain global warming. “Polar vortex” has been in meteorology books since early 20th century. Climate scientists have long predicted that the Jet Stream would develop large meanders as the result of warming in the Arctic and the lessening of Arctic sea ice. A large meander system of the Jet Stream developed over the U.S. during the winter of 2013–2014 causing record high temperatures in Alaska and record lows and snowfalls in the mid-western and north-eastern U.S. As the large meander dips southward, cold air is found as far south as the Gulf of Mexico and warm air as far north as Alaska.
- Two-thousand-thirteen (2013) was not the hottest year on record, though it ranked in the top 10 in most datasets: (4th in NOAA/NCDC’s record, 7th in NASA/GISS, 8th in the UK’s Hadley Centre HadCRUT4, and 5th in the new Cowtan and Way record).
- Warming of the lower atmosphere slowed which raised the question: Where was the extra heat going? It prompted deniers to again claim that global warming stopped in 1998. Climate scientists were able to show that the deep oceans continued to warm at an accelerated rate and that there had been previous episodes when the surface temperature leveled out; Global warming continued and even accelerated during the apparent slowdown with the deep ocean waters heating faster than ever before.
- New research by Cowtan and Way, *Quarterly Journal of the U.K.’s Royal Meteorological Society*, November 2013, creates a new temperature dataset by the statistical method known as Kriging for poorly represented areas in the HadCRUT4 dataset. By this statistical method, fairly accurate temperature data were acquired from previously unmeasured Arctic, Antarctic, and central Africa areas, refuting recent thinking on a slow-down in warming, and increasing estimates of rising temperatures globally. Cowtan and Way realized that although satellites might not give good estimates of surface temperature directly, they provide much more accurate estimates of how temperature varied from place to place. It turns out that if the satellites estimate that an area 10 miles away is about 2° colder than a current location, something quite similar will be seen in the data from weather stations 10 miles away. By using surface measurements for specific locations and using the spatial information from the satellites to fill

in missing regions each month, they discovered that they could create an accurate estimate of temperatures in areas with few or no direct temperature measurements available. The statistical method Kriging was previously applied to land temperatures by the Berkeley Earth group to interpolate the surface measurements based on the satellite field.

- Sea ice extent in 2013 in the Arctic was well below the long-term (1978–2000) average, but nowhere near as low as the record-breaking low of 2012. Antarctic sea ice was unusually high in 2013, pushing overall global sea ice close to the long-term average. Arctic sea ice set a record low in 2012 and the fact that the 2013 sea ice extent was greater than 2012 caused climate change deniers to insist that there was no global warming and it had stopped in 1998, and that the increase in 2013 Arctic sea ice “proved it.”
- Sea-level rise has continued in the oceans, with 2013 reversing the slight slow-down that occurred in 2012, and again rising in line with the overall trend over the past decade. Sea-level measurements are now primarily taken with satellite altimeters, which have much greater spatial coverage than tide gauges. IPCC revised their projected sea-level rise by 2,100 up to 3 ft (1 m) in the worst-case scenario (the scenario does not include the collapse of polar ice sheets).
- El Niño and La Niña comprise the periodic cycle in ocean temperatures that drives much year-to-year variability in global temperatures. El Niño years tend to be hotter than normal and La Niña years tend to be colder. In 2013 it was neither an El Niño nor a La Niña year. A moderate El Niño is forecast for the latter part of 2014, with some suggesting that the year could end up setting a new record for the hottest year ever.
- One of the most cited papers in 2013 was entitled “Quantifying the consensus on anthropogenic global warming in the scientific literature” (*Environmental Research Letters* 15 May 2013) by John Cook and colleagues from <http://www.skepticalscience.com>. This paper concludes, from a rigorous survey and analysis, that 97 % of climate scientists agree that global warming is occurring and that humans are mainly responsible. This conclusion is in line with and complementary to previous studies by Oreskes and others.
- Kosaka and Xie (2013) showed that changes in the Pacific Ocean could account for most of the short-term global surface temperature changes in a paper published online 28 August 2013 in *Nature*. Quoting the authors, “Our results show that the current hiatus is part of natural climate variability, tied specifically to La-Niña-like decadal cooling... For the recent decade, the decrease in tropical Pacific sea surface temperature has lowered the global temperature by about 0.15 °C compared to the 1990s.”
- On January 16, 2014, the U.S. Senate conducted a hearing on a “Review of the President’s Climate Action Plan.” Professor Andrew Dessler of Texas A&M University testified that current climate change “is a clear and present danger.” In the same hearing, Senator Jeff Sessions (R-AL) quoted Roger Pielke, Jr. (who refers to himself as Dr. but has no earned doctorate; he is not a scientist but is a “political scientist”) in the latter’s July 2013 testimony before the same committee (Oversight Subcommittee of the U.S. Senate’s Committee on

Environment and Public Works) and raised an angry firestorm between Dr. John Holdren, the President's Science Adviser and Mr. Pielke, Jr. Mr. Pielke apparently didn't like being called a liar and accused Dr. Holdren of distorting the science. Unfortunately, Mr. Pielke doesn't understand the science. Dr. Holdren is a preeminent scientist and a former president of the American Association for the Advancement of Science.

- A paper in *Nature Climate Change*, February 2014, by Favier et al., "Retreat of Pine Island Glacier controlled by marine ice-sheet instability" stated that at present the Pine Island Glacier in West Antarctica is thinning and its grounding line has retreated. The work uses three ice-flow models to investigate the stability of the glacier and finds that the grounding line could retreat a further 40 km, which is equivalent to a rise in sea level of 3.5–10 mm over a 20 year period. The new analysis of Antarctica's massive ice sheet suggests the ice is melting much faster now and that the damage is "irreversible." Research shows the massive 68,000-square-mile sheet of ice, believed to be the biggest single contributor to sea-level rise in Antarctica, has begun to shed water at a rate not seen before.
- Balmaseda, Trenberth, and Källén, 2013, published "Distinctive climate signals in reanalysis of global ocean heat content" in *Geophysical Research Letters*, article first published online: 10 May 2013 that examined ocean temperatures with a new analysis showing that in the past decade about 30 % of the heat has been distributed to levels below 700 m, where most previous analyses stop.
- Scientists from University of Toronto's Department of Chemistry discovered a novel chemical lurking in the atmosphere that appears to be a long-lived greenhouse gas (LLGHG). The chemical, perfluorotributylamine (PFTBA) is the most radiatively efficient chemical found to date, breaking all other chemical records for its potential to impact climate. Calculated over a 100-year time-frame, a single molecule of PFTBA has the equivalent climate impact as 7,100 molecules of CO₂. Their work as of this writing is unpublished.
- The Fall Meeting of the AGU was held in San Francisco in December 2013 with several sessions devoted to climate science.
- The 19th *Conference of the Parties of the UN Framework Convention on Climate Change (COP 19)* was held in November 2013 in Warsaw, Poland. Little of significance was accomplished. The COP 19 conference closed with a deal finalized on a loss and damage mechanism designed to help developing nations cope with climate change impacts. The deal commits countries to a loss and damage mechanism; the "Warsaw International Mechanism for Loss and Damage." The agreement means that developed nations will be committed to providing expertise and aid to countries who suffer from climate-related impacts.
- Global surface temperatures have slowed over the past 10–15 years. Climate scientists are aware that the positive energy imbalance still exists, so the question of where the heat is going was at first a puzzle. Recently, England et al. published a paper in the journal *Nature Climate Change* entitled "Recent intensification of wind-driven circulation in the Pacific and the ongoing warming hiatus" that explains the hiatus in surface warming as due to internal factors shifting the heat into the oceans. In particular, the rate at which the deep oceans have warmed over the past 10–15 years is unprecedented in the past half century.

- Research led by Masahiro Watanabe of the Japanese Atmosphere and Ocean Research Institute suggests that the hiatus in surface warming is mainly due to more efficient transfer of heat to the deep oceans. Consistent with model simulations led by Gerald Meehl, Watanabe finds that we sometimes expect “hiatus decades” to occur, when surface air temperatures don’t warm because more heat is transferred to the deep ocean layers.
- A paper published in *Nature* by Yu Kosaka and Shang-Ping Xie (published online: 28 August 2013) from the Scripps Institution of Oceanography found that accounting for the changes in Pacific Ocean surface temperatures allowed their model to reproduce the slowed global surface warming over the past 10–15 years.
- In the January 2014 issue of *Nature*, the gradual warming of the North and Tropical Atlantic Ocean is seen to be contributing to climate change in Antarctica, a team of New York University scientists has concluded. The findings, which rely on more than three decades of atmospheric data, show new ways in which distant regional conditions are contributing to Antarctic climate change. Xichen Li, a doctoral student in NYU’s Courant Institute of Mathematical Sciences and the study’s lead author. “Moreover, the study offers further confirmation that warming in one region can have far-reaching effects in another.”
- In the mid-1970s, the first available satellite images of Antarctica during the polar winter revealed a huge ice-free region within the ice pack of the Weddell Sea. This ice-free region, or polynya, stayed open for three full winters before it closed. Subsequent research showed that the opening was maintained as relatively warm waters churned upward from kilometers below the ocean’s surface and released heat from the ocean’s deepest reaches. But the polynya, which was the size of New Zealand, has not reappeared in the nearly 40 years since it closed, and scientists have since come to view it as a naturally rare event. Now, however, a study led by researchers from McGill University (Nature Climate Change, 2014) suggests a new explanation: The 1970s polynya may have been the last gasp of what used to be a more common feature of the Southern Ocean, and which is now suppressed due to the effects of climate change on ocean salinity. The ocean’s surface has been steadily getting less salty since the 1950s. This lid of fresh water on top of the ocean prevents mixing with the warm waters underneath. As a result, the deep ocean heat has been unable to get out and melt back the wintertime Antarctic ice pack.
- The Arctic-wide melt season has lengthened 5 days/decade from 1979 to 2013, dominated by later autumn freeze-up within the Kara, Laptev, East Siberian, Chukchi, and Beaufort seas between 6 and 11 days/decade. The timing of melt onset has a large influence on the total amount of solar energy absorbed during summer. The additional heat stored in the upper ocean of approximately 752 MJ m^{-2} during the last decade increases sea surface temperatures by 0.5–1.5 °C and largely explains the observed delays in autumn freeze-up within the Arctic Ocean’s adjacent seas. This extra solar energy is equivalent to melting 0.97–1.3 m of ice during the summer (Stroeve et al. 2014 *Geophysical Research Letters*: Article first published online 22 February 2014).
- Google selects Berkeley Earth maps for the Google Maps Gallery launch on February 27 2014.

- The BEST project announced that their new dataset combining land and SST data had been posted.

There are many important papers published and events regarding our changing climate that took place during 2013 and into February 2014 and the above list is but a small sample.

2.25 Projections of Future Climate

Figure 2.12 shows observations of (a) Global average surface temperature. (b) Global average sea level, and (c) Northern Hemisphere snow cover from 1850 to 2006.

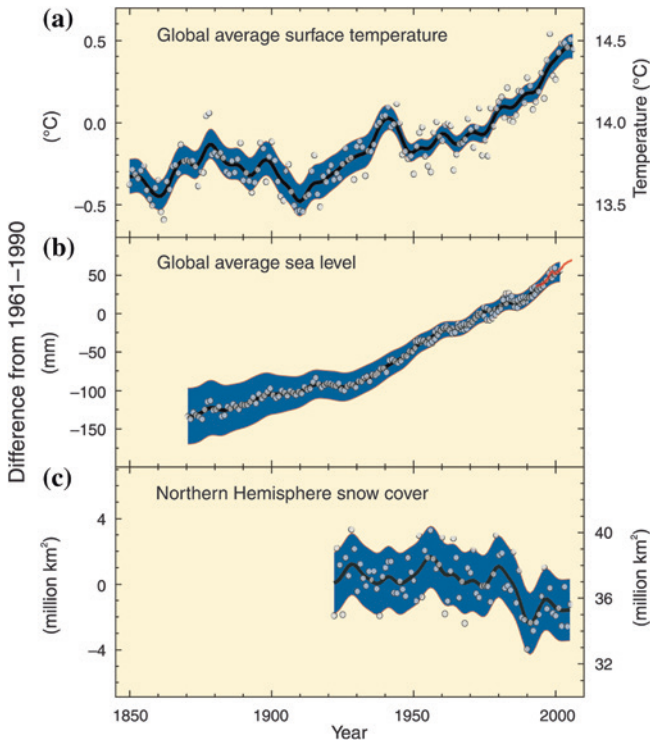


Fig. 2.12 Observed changes in **a** global average surface temperature; **b** global average sea level from tide gauge (blue) and satellite (red) data; and **c** Northern Hemisphere snow cover for March-April. All differences are relative to corresponding averages for the period 1961–1990. Smoothed curves represent decadal averaged values while circles show yearly values. The shaded areas are the uncertainty intervals estimated from a comprehensive analysis of known uncertainties (From IPCC AR4 2007 WG1 synthesis report)

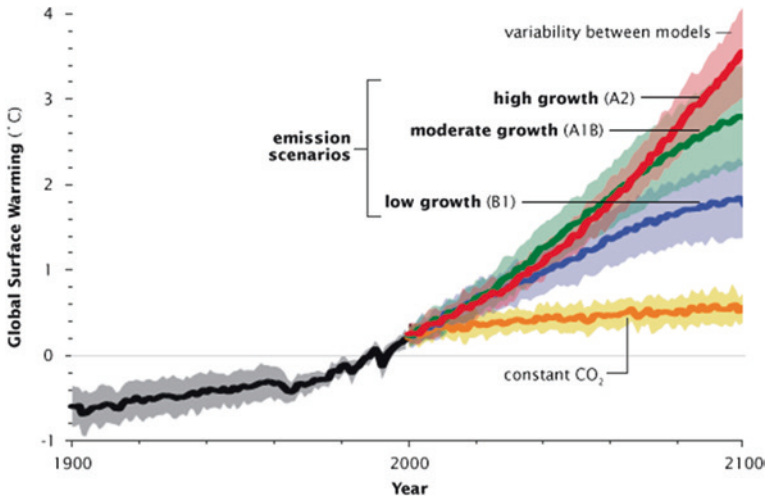


Fig. 2.13 Model simulations by the intergovernmental panel on climate change estimate that earth will warm between 2 and 6 °C over the next century, depending on how fast carbon dioxide emissions grow. Scenarios that assume that people will burn more and more fossil fuel provide the estimates in the top end of the temperature range, while scenarios that assume that greenhouse gas emissions will grow slowly give lower temperature predictions. The *orange line* provides an estimate of global temperatures if greenhouse gases stayed at year 2000 levels (IPCC WG1 AR4 2007)

The amount of future global warming and concomitant problems of Earth's climate change and its effects on living organisms are difficult to impossible to predict. This is one reason the IPCC uses the word projection. Based on our current knowledge, we can project our climate scenarios into the future.

As can be seen from Fig. 2.13 (IPCC AR4 2007), projections are made based on model simulations with assumptions of future greenhouse gas emissions ranging from constant CO₂ to high growth (A2) emissions. Based on a range of plausible emission scenarios, average surface temperatures could rise between 2 and 6 °C by the end of the 21st century.

References and Additional Reading

- Archer D (2005) Fate of fossil fuel CO₂ in geologic time. *J Geophys Res* 110:C09505. doi:[10.1029/2004JC002625](https://doi.org/10.1029/2004JC002625)
- Bader DC et al (2008) Climate models: an assessment of strengths and limitations. A report by the US climate change science program and the Subcommittee on Global Change Research. Department of Energy, Office of Biological and Environmental Research, Washington, DC, USA
- Bauer JE et al (2013) The changing carbon cycle of the coastal ocean. *Nature* 504:61–70 (5 Dec 2013). doi [10.1038/nature12857](https://doi.org/10.1038/nature12857)
- Bintanja R et al (2013) Important role for ocean warming and increased ice-shelf melt in Antarctic sea-ice expansion. *Nat Geosci* 6(5):376–379 (31 March 2013)

- Brohan P et al (2006) Uncertainty estimates in regional and global observed temperature changes: a new dataset from 1850. *J Geophys Res* 111:D12106. doi:[10.1029/2005JD006548](https://doi.org/10.1029/2005JD006548) (available as PDF)
- Brulle RJ (2013) Institutionalizing delay: foundation funding and the creation of US climate change counter-movement organizations. *Clim Change*. doi:[10.1007/s10584-013-1018-7](https://doi.org/10.1007/s10584-013-1018-7)
- Charles AJ et al (2011) Constraints on the numerical age of the Paleocene-Eocene boundary. *Geochem Geophys Geosyst* 12. doi:[10.1029/2010GC003426](https://doi.org/10.1029/2010GC003426)
- Cook BI et al (2014) Pan-continental droughts in North America over the last millennium. *J Clim* 27:383–397. doi:[10.1175/JCLI-D-13-00100.1](https://doi.org/10.1175/JCLI-D-13-00100.1)
- Cowan K, Way RG (2014) Coverage bias in the HadCRUT4 temperature series and its impact on recent temperature trends. *Q J R Meteorol Soc* (12 Feb 2014). doi:[10.1002/qj.2297](https://doi.org/10.1002/qj.2297)
- England MH et al (2014) Recent intensification of wind-driven circulation in the Pacific and the ongoing warming hiatus. *Nat Clim Change* (9 Feb 2014)
- Farmer GT, Cook J (2013) *Climate change science: a modern synthesis*. Springer, Dordrecht
- Feng S et al (2014) Projected climate regime shift under future global warming from multi-model, multi-scenario CMIP5 simulations. *Global Planet Change* (Jan 2014)
- Freidman, TL (2008) *Hot, flat, and crowded*, Farrar, Straus and Giroux
- Fu Q, Johanson CM (2005) Satellite-derived vertical dependence of tropical tropospheric temperature trends. *Geophys Res Lett* 32(10):L10703. Bibcode:2005 GeoRL.3210703F. doi:[10.1029/2004GL022266](https://doi.org/10.1029/2004GL022266)
- Galaasen EV et al (2014) Rapid reductions in North Atlantic Deep Water during the peak of the last interglacial period. *Science* (20 Feb 2014). doi:[10.1126/science.1248667](https://doi.org/10.1126/science.1248667)
- Haigh JD et al (2010) An influence of solar spectral variations on radiative forcing of climate. *Nature* 467:696–699 (07 Oct 2010). doi:[10.1038/nature09426](https://doi.org/10.1038/nature09426)
- Hansen J (2009) *Storms of my grandchildren*, Bloomsbury. ISBN 978-1-60819-200-7
- Hansen J et al (2013) Climate sensitivity, sea level, and atmospheric carbon dioxide. *Phil Trans R Soc (A)* 371:20120294. doi:[10.1098/rsta.2012.0294](https://doi.org/10.1098/rsta.2012.0294)
- IPCC AR4 (2007) Chapter 8: climate models and their evaluation. The IPCC Working Group I, fourth assessment report
- IPCC AR5 (2013) *Climate change 2013: the physical science basis*. Working Group I contribution to the IPCC 5th assessment report
- Johnson JS et al (2014) Rapid thinning of Pine Island Glacier in the early Holocene. *Science* (20 Feb 2014). doi:[10.1126/science.1247385](https://doi.org/10.1126/science.1247385)
- Jones PD et al (2012) Hemispheric and large-scale land surface air temperature variations: an extensive revision and an update to 2010. *J Geophys Res*. doi:[10.1029/2011JD017139](https://doi.org/10.1029/2011JD017139)
- Kosaka Y, Xie S-P (2013) Recent global-warming hiatus tied to equatorial Pacific surface cooling. *Nature* 501:403–407. doi:[10.1038/nature12534](https://doi.org/10.1038/nature12534)
- Laverge C et al (2014) Cessation of deep convection in the open Southern Ocean under anthropogenic climate change. *Nat Clim Change*. doi:[10.1038/nclimate2132](https://doi.org/10.1038/nclimate2132)
- Levitus S et al (2009) Global Ocean heat content 1955–2008 in light of recently revealed instrumentation problems. *Geophys Res Lett* 36:5
- Li X et al (2014) Impacts of the north and tropical Atlantic Ocean on the Antarctic Peninsula and sea ice. *Nature* 505(7484):538. doi:[10.1038/nature12945](https://doi.org/10.1038/nature12945)
- Manabe S, Wetherald RT (1967) Thermal equilibrium of the atmosphere with a given distribution of relative humidity. *J Atmos Sci* 24(3):241–259
- Mann ME et al (1998) Global-scale temperature patterns and climate forcing over the past six centuries. *Nature* 392:779–787
- Mann ME et al (1999) Northern Hemisphere temperatures during the past millennium: inferences, uncertainties, and limitations. *Geophys Res Lett* 26:759–762
- Marcott SA et al (2013) A reconstruction of regional and global temperature for the past 11,300 years. *Science* 339:1198–1201
- Morice CP et al (2012) Quantifying uncertainties in global and regional temperature change using an ensemble of observational estimates: the HadCRUT4 dataset. *J Geophys Res* 117:D08101. doi:[10.1029/2011JD017187](https://doi.org/10.1029/2011JD017187)

- NOAA Geophysical Fluid Dynamics Laboratory (2012) NOAA GFDL climate research highlights image gallery: patterns of greenhouse warming, NOAA GFDL (9 Oct 2012)
- Oreskes N, Conway EM (2010) *Merchants of doubt: how a handful of scientists obscured the truth on issues from tobacco smoke to global warming*. Bloomsbury Press. ISBN 978-1-59691-610-4. merchantsofdoubt.org
- Pachauri RK, Reisinger A (ed) (2007) IPCC AR4 SYR Core Writing Team, climate change 2007: synthesis report (SYR), Contribution of Working Groups I, II and III to the fourth assessment report (AR4) of the intergovernmental panel on climate change. IPCC, Geneva, Switzerland. ISBN 92-9169-122-4
- Rind DH et al (2014) The impact of different absolute solar irradiance values on current climate model simulations. *J Climate* 27:1100–1120. doi:[10.1175/JCLI-D-13-00136.1](https://doi.org/10.1175/JCLI-D-13-00136.1)
- Roe GH, Baker MB (2007) Why is climate sensitivity so unpredictable? *Science* 318:629–632
- Santer B et al (2014) Volcanic contribution to decadal changes in tropospheric temperature. *Nat Geosci* 7:185–189. doi:[10.1038/ngeo2098](https://doi.org/10.1038/ngeo2098)
- Schmidt GA et al (2014) Using paleoclimate comparisons to constrain future projections in CMIP5. *Clim Past* 10:221–250. doi:[10.5194/cp-10-221-2014](https://doi.org/10.5194/cp-10-221-2014)
- Seidel DJ et al (2004) Uncertainty in signals of large-scale climate variations in radiosonde and satellite upper-air temperature datasets. *J Clim* 17:2225–2240
- Shakhova N et al (2013) Ebullition and storm-induced methane release from the East Siberian Arctic Shelf. *Nat Geosci* 7:64–70
- Sokolov AP et al (2009) Probabilistic forecast for 21st century climate based on uncertainties in emissions (without policy) and climate parameters. *J Clim* 22:5175–5204
- Stroeve JC et al (2014) Changes in Arctic melt season and implications for sea ice loss. *Geophys Res Lett*. Article first published online: 22 Feb 2014. doi:[10.1002/2013GL058951](https://doi.org/10.1002/2013GL058951)
- Tarnocai C et al (2009) Soil organic carbon pools in the northern circumpolar permafrost region. *Global Biogeochem Cycles* 23. GB2023Bibcode:2009GBioC.23.2023T. doi:[10.1029/2008GB003327](https://doi.org/10.1029/2008GB003327)
- Thiede JC et al (2011) Millions of years of Greenland ice sheet history recorded in ocean sediments. *Polarforschung* 80(3):141–159
- Turner J, Overland J (2009) Contrasting climate change in the two polar regions. *Polar Res* 28(2)
- United Nations, Department of Economic and Social Affairs, Population Division (2013) *World population prospects: the 2012 revision, key findings and advance tables*. Working paper No. ESA/P/WP.227
- Wehrli C et al (2013) Correlation of spectral solar irradiance with solar activity as measured by VIRGO. *Astron Astrophys* 556 (Aug 2013)
- Westerhold T et al (2008) New chronology for the late Paleocene thermal maximum and its environmental implications. *Palaeogeogr Paleoclimatol Palaeoecol* 257:377–403
- Zou C (2006) Recalibration of microwave sounding unit for climate studies using simultaneous nadir overpasses. *J Geophys Res* 111:D19114. Bibcode: 2006JGRD.11119114Z. doi:[10.1029/2005JD006798](https://doi.org/10.1029/2005JD006798)

Modern Climate Change Science

An Overview of Today's Climate Change Science

Farmer, G.Th.

2015, XXV, 106 p. 38 illus., 37 illus. in color., Softcover

ISBN: 978-3-319-09221-8