

Fast Constrained Image Segmentation Using Optimal Spanning Trees

Stanislav Harizanov¹(✉), Svetozar Margenov¹, and Ludmil Zikatanov^{2,3}

¹ Institute of Information and Communication Technologies,
Bulgarian Academy of Sciences, Sofia, Bulgaria
`sharizanov@parallel.bas.bg`

² Department of Mathematics, Pennsylvania State University,
University Park 16802, USA

³ Institute of Mathematics and Informatics,
Bulgarian Academy of Sciences, Sofia, Bulgaria

Abstract. We propose a graph theoretical algorithm for image segmentation which preserves both the volume and the connectivity of the solid (non-void) phase of the image. The approach uses three stages. Each step optimizes the approximation error between the image intensity vector and piece-wise constant (indicator) vector characterizing the segmentation of the underlying image. The different norms in which this approximation can be measured give rise to different methods. The running time of our algorithm is $\mathcal{O}(N \log N)$ for an image with N voxels.

1 Introduction

We focus on the image segmentation problem, which is one of the challenging problems in Computer Vision. Throughout the last three-four decades numerous approaches have been proposed and developed in order to attack the problem. In 1989, Mumford and Shah [18] minimized a certain energy functional in order to compute the segmentation. The functional contains three terms: regularity term on the length of the inter-phase contours, regularity term on the smoothness of the intensity function v , and the data fidelity term which measures the L^2 distance between the input intensity u and the output intensity v . Since the Mumford-Shah functional is non-convex and non-smooth, the optimization problem is difficult to solve. Simplifications of the model, however, have been proposed. Among these is the piecewise smooth convex relaxation by functional lifting [19]. Another frequently applied strategy is to restrict v within the class of piece-wise constant functions, so that the second regularity term in the original functional is omitted. This piecewise constant model, combined with classical gradient based active contour models lead to the Chan-Vese model ([8] for 2-phase and [25] for multi-phase segmentation). There are many other approaches for 2-phase image segmentation based on [8] and its convex relaxation [7], e.g., [4, 9, 29]. In [6], the regularity term in the Mumford-Shah functional is replaced by the Rudin-Osher-Fatemi (ROF) functional [21]. A new multiphase segmentation model based on iteratively thresholding the minimizer of the ROF functional

of a convex relaxation of the Mumford-Shah functional is presented and relation between the solution in the 2-phase case and the one from the Chan-Vese model is established.

Graph-based image segmentation has been another active research field for the past 40 years. While the works we mentioned earlier use a continuous setup, in the graph based approaches, one studies a suitably constructed graphs whose vertices are the voxels describing the image. In [28], Zahn uses the minimum spanning tree (MST) of a weighted graph to obtain the phases. The edge weights are defined as the differences of the intensities of neighboring voxels. A “heavy” MST edges are then cut out, leaving the different connected components to be the different phases. Some shortcomings of the model have been overcome in [24], where the weights are normalized. A segmentation method, based on finding minimum cuts in a graph, is developed in [27]. The method appeared to be biased more towards finding small components. A normalized cut criterion, which takes into account self-similarity of regions, is developed in [22]. The latter leads to an NP-hard problem and in [22] the authors propose several polynomial approximating algorithms. The work of Weiss [26] relates such eigenvector-based approximations to more standard (spectral) partitioning methods on graphs. An efficient greedy algorithm for multiphase segmentation, based on edge detection, is developed in [10]. Although the algorithm uses local optimization procedures it runs in almost linear time with respect to the number of edges, and the output segmentation satisfies global properties.

Other graph-Laplacian-based segmentation models [13, 16, 17, 23] can be viewed as an intersection of the general approaches we have just described. In these works, the image voxels are again part of a graph structure, and the corresponding 2-Laplacian functional [1, 5] is used as the data fidelity term in an optimization problem. The data smoothing is not addressed via additional regularity terms in the functional, but by carefully choosing the edge weights.

The variety of segmentation techniques is huge and we cannot cover it all. There are other approaches, some of them considered classical (e.g., the K-means method and its modifications). We refer to [3, 12], for the corresponding techniques and review of the literature.

In this paper we consider a constraint 2-phase segmentation problem, where one of the phases is simply connected and of fixed volume. The motivation comes from industry and more precisely from Computer Tomography (CT). Porous materials are of current interest within a wide range of applications and their properties strongly depend on various measurements such as absolute porosity, average pore size, size and shape of individual pores. Therefore, accurate segmentation of the 3D industrial CT reconstruction of the corresponding specimen is crucial for further numerical simulations. Due to the highly irregular structure of the segmentation phases and the presence of noise in the image, the methods, described earlier are not reliable and in some cases the results between different algorithms may differ drastically (even in 50 % of the voxels). To say the least, such a task is nontrivial.

An important constraint is the volume constraint. It is practical to assume that: (1) the volume (e.g. the number of “solid” voxels) of the solid phase is fixed (determined from the density and the weight of the material); and (2) the specimen consists of only one material piece (connected component).

In our work, we aim to design algorithms that give accurate segmentation, but also which respect the constraints given in (1) and (2). Recently, a promising step in this direction was made in [11], where, based on the techniques from [13] algorithms for accurate segmentation (with the volume constraint) were reported. Here, we introduce a different approach, based on MST properties. We propose a new class of algorithms, which give promising results and provide a framework for future research on the constrained image segmentation. Our mathematical model requires minimization of functionals measuring the approximation error with piece-wise constant functions. For the theory, we consider a discrete version of the fidelity term of the Chan-Vese model (called *fitting energy*) defined on the characteristic functions χ_S of simply-connected subsets $S \subset \Omega$ of cardinality $|S| = M$. Then, in the experimental part we add a regularity term to it for data smoothing.

The rest of the paper is organized as follows. We give preliminary notation and definitions in Sect. 2. Next, in Sect. 3 we formulate the problem relevant to the 2-phase constrained image segmentation. In Sect. 4 we describe in more detail the 3 stage algorithm and in Sect. 5 we test its performance.

2 Preliminaries

We introduce the notation needed to formulate a problem which we refer to in what follows as the *2-phase image segmentation problem*. We are given a volume Ω in 3D (2D) which is split in $n_x \times n_y \times n_z$ cubes (squares in 2D case when $n_z = 1$). The cubes are called voxels. The total number of voxels is $N = n_x n_y n_z$, and the set of voxels is \mathcal{V} . We thus have

$$\overline{\Omega} = \bigcup_{K \in \mathcal{V}} \overline{K}.$$

We assume that we are given a piece-wise constant (with respect to the partition of Ω in voxels) function called *intensity* u . Denoting by χ_S the characteristic function of a set S , we have that

$$u = \sum_{K \in \mathcal{V}} u_K \chi_K.$$

Here, $u_K = u|_K$. Since the space of such piece-wise constant functions is isomorphic to \mathbb{R}^N , we also denote by u the corresponding vector $\{u_K\}_{K \in \mathcal{V}}$ in \mathbb{R}^N , hoping that there is no ambiguity in such notation.

The formulation of the 2-phase image segmentation problem involves topological connectivity with respect to various graphs, thus we introduce the relevant

notation next. We denote $G_1(\mathcal{V}, \mathcal{E}_1)$ and $G_\infty(\mathcal{V}, \mathcal{E}_\infty)$ to be the undirected graphs with vertices the set of voxels and edge sets \mathcal{E}_p , $p = 1, \infty$ defined as follows:

$$\mathcal{E}_p = \{(i, j) \in \mathcal{V} \times \mathcal{V} \mid \|i - j\|_{\ell^p} = 1\}.$$

Since we only consider undirected graphs, $(i, j) \in \mathcal{E}_p$ implies that $(j, i) \in \mathcal{E}_p$. The neighborhood $\mathcal{N}_p(i)$ of a voxel is defined as

$$\mathcal{N}_p(i) = \{j \in \mathcal{V} \mid (i, j) \in \mathcal{E}_p\}.$$

For example, $\mathcal{N}_1(i)$ consists of the 6 voxels that share a common face with i , while $\mathcal{N}_\infty(i)$ consists of the 26 voxels that build the $3 \times 3 \times 3$ cube, centered at i .

The graph G is called connected if and only if for every pair of voxels i and j , there is a path formed by elements of \mathcal{E} connecting them.

In the following definitions, we assume that we have fixed a connected graph $G = (\mathcal{V}, \mathcal{E})$ whose set of vertices is the set of voxels.

Definition 1. Let $S \subset \mathcal{V}$ be a set of voxels. We call $G_S = (S, \mathcal{E}_S)$ the graph induced by S if G_S has as vertices the voxels in S and as edges all edges in \mathcal{E} for which both ends are in S .

Definition 2. Let $S \subset \mathcal{V}$ be a set of voxels. We call S a G -connected set if the graph G_S induced by S is connected.

When each edge $e = (i, j) \in \mathcal{E}$ has a weight $\omega_{ij} \geq 0$, the graph G is called weighted. The weights may have various meanings when the graph is related to real-life problems (e.g., gain, cost, penalty, etc.). In this paper, they will measure the dissimilarities between the edge endpoints (e.g., difference in intensities or/and gradient values of the corresponding voxels), so $w_{ij} \sim 0$ means that $i \sim j$ in a given sense. Every connected weighted graph possesses a minimum spanning tree. This tree is a computationally efficient way to store both connectivity and similarity information, and it plays a central role in our algorithm. Therefore, we briefly cover the MST theory we use in the paper. Let $G = G_\infty(\mathcal{V}, \mathcal{E})$.

Definition 3. We say that the graph $T(\mathcal{V}_T, \mathcal{E}_T)$ is a minimum spanning tree (MST) of G , if $\mathcal{V}_T = \mathcal{V}_G$, T contains no cycles, and $\sum_{(i,j) \in \mathcal{E}_T} \omega_{ij} \rightarrow \min$.

Important properties of T are stated below:

Cycle property: For any cycle C in G , if $\bar{e} = \operatorname{argmax}_{e \in C} \omega_e$ is unique, then $\bar{e} \notin T$.

Cut property: For any cut C in G , if $\bar{e} = \operatorname{argmin}_{e \in C} \omega_e$ is unique, then $\bar{e} \in T$.

Contraction: If $\mathcal{T} \subset T$ is a tree, then we can contract it to a single vertex and maintain the MST property for the factor graph.

Definition 4. We call $\mathcal{L}_T := \{i \in \mathcal{V} : \exists! j \in \mathcal{V} \text{ s.t. } (i, j) \in \mathcal{E}_T\}$ the set of leaves of T . The heaviest leaf of T is $l_T := \operatorname{argmax}_{i \in \mathcal{L}_T} \{\omega_{ij} : (i, j) \in \mathcal{E}_T\}$.

To construct the MST, we apply the Kruskal's algorithm [15], which is linear in the number of edges (thus of $O(N \log N)$ complexity). Possible accelerations using local techniques and parallel realizations (the so called approximate Kruskal algorithm is found on pp.600–602 in Kraus [14]) are available, but since the purpose of this paper is mainly to address the constraint segmentation problem, we do not pursue this avenue here, and we use the classical algorithm in [15].

3 Problem Formulation

Here we state in a precise fashion the mathematical problem for determining a 2-phase segmentation of an image with intensity $u \in [0, 1]^N$.

We begin by giving the definition of an *admissible 2-phase (image) segmentation*.

Definition 5. *Given an intensity u and a graph G , we say that S is an admissible 2-phase segmentation if the following properties are satisfied*

- **Connectedness Property (CP):** S is G -connected.
- **Approximate Dominating Property (ADP):** *There exists an intensity $v \approx u$ which provides the same solution S and satisfies Dominating Property (DP):*

$$\min_{K \in S} u_K > \max_{K \in \bar{S}} u_K \quad \bar{S} = \mathcal{V} \setminus S.$$

When u itself satisfies (DP), we call S (DP)-admissible. In such a case, the image phases are well-separated and even direct segmentation methods such as hard thresholding will do the job. In this paper, we consider noisy and blurry images, where the boundary between S and \bar{S} is not that sharp. We note that the notion of $v \approx u$ is a bit vague here. Intuitively, one may think of v as the original (denoised and deblurred version of u) image intensity, while the \approx sign implies certain constraints on the magnitude of both the noise and blur levels of the image.

We consider a 2-phase segmentation problem, where the solid phase is connected and of fixed volume.

Problem 1. Given u and G , find 2-phase admissible segmentation S with a given cardinality $|S| = M > 1$.

We introduce the following family of functionals $J : 2^{\mathcal{V}} \mapsto \mathbb{R}$, where $2^{\mathcal{V}}$ is the set of all subsets of the set of vertices \mathcal{V} .

$$J(S) = \|u - \chi_S\|^2, \quad \chi_S \text{ is the characteristic function of } S. \quad (1)$$

The values of the functional depend on the norm that we take, and we are going to have two types of norm, thus two different functionals:

$$J_0(S) = \|u - \chi_S\|_{\ell^2(\mathcal{V})}^2, \quad J_1(S) = \|u - \chi_S\|_{\ell^2(\mathcal{V})}^2 + \lambda \|\nabla(u - \chi_S)\|_{\omega}^2. \quad (2)$$

Here, $\lambda > 0$ is a parameter, $\nabla : \mathbb{R}^n \mapsto \mathbb{R}^{n_e}$ is the discrete gradient defined as

$$(\nabla v)_e = \delta_e v = v_i - v_j, \quad i < j, \quad (i, j) = e \in \mathcal{E}. \quad (3)$$

$$(\nabla v, \nabla w)_\omega = \sum_{e \in \mathcal{E}} \omega_e \delta_e v \delta_e w. \quad (4)$$

The non-negative weights $\{\omega_e\}_{e \in \mathcal{E}}$ may depend on the intensity u , and will be dealt with in Sect. 4. Finally, the weighted norm of the gradient is defined as

$$\|\nabla v\|_\omega^2 = (\nabla v, \nabla v)_\omega. \quad (5)$$

Note that J_0 can be seen as the discrete and simplified version of the 2D Chan-Vese fitting energy [8]

$$F_1(\mathcal{C}) + F_2(\mathcal{C}) = \int_{\text{inside}(\mathcal{C})} |u - c_0|^2 dx dy + \int_{\text{outside}(\mathcal{C})} |u - c_1|^2 dx dy,$$

where \mathcal{C} is a 2D curve. The 2-phase segmentation there is obtained via minimizing the fitting energy with respect to \mathcal{C} , c_0 , and c_1 together with regularity terms on the length of \mathcal{C} and the area of its interior. Then, the interior and the exterior of \mathcal{C} are the two phases. Here, we set $c_0 = \min_i u_i = 0$, and $c_1 = \max_i u_i = 1$. We have no regularity terms, but impose two additional constraints: the interior to be connected and of cardinality M . If no constraints are addressed, it is straightforward to check that the minimizer of J_0 corresponds to direct hard-threshold segmentation (e.g., $i \in S \Leftrightarrow u_i \geq 0.5$). The functional J_1 is J_0 , penalized by a regularity term. The regularization depends on the choice of the weights ω .

We now have the following definition.

Definition 6. *We say that the set S provides an optimal 2-phase segmentation for u if and only if S is an admissible 2-phase segmentation of cardinality M and it minimizes the functional $J(S)$, namely,*

$$S = \arg \min \{J(S) \mid |S| = M, S \text{ is connected}\}.$$

Such definition leads to a simple characterization of the minimizer for the norm choices (2). Indeed we have for all $S \in 2^\mathcal{V}$

$$\begin{aligned} J_0(S) &= \sum_{j \in S} (u_j - 1)^2 + \sum_{j \notin S} u_j^2 = \|u\|_{\ell^2}^2 - 2 \sum_{j \in S} u_j + \|\chi_S\|_{\ell^2}^2 \\ &= -2 \sum_{j \in S} u_j + \|u\|_{\ell^2}^2 + M. \end{aligned}$$

Thus, minimizing $J_0(S)$ is equivalent to finding a G -connected S , such that

$$S = \arg \max J_*(S), \quad J_*(S) := \sum_{j \in S} u_j.$$

Note that $J_*(\cdot)$ is a linear functional in u . Next, we look into the other norm. Denote the set of edges connecting S with the complement of S , denoted here by \bar{S} by \mathcal{E}_c (c stands for “cut”). We note that $\nabla\chi_S = 0$ for all edges interior to S or \bar{S} . We then compute

$$\|\nabla u - \nabla\chi_S\|_\omega^2 = \|\nabla u\|_\omega^2 - 2 \sum_{e \in \mathcal{E}_c} \omega_e \delta_e u + \sum_{e \in \mathcal{E}_c} \omega_e = \|\nabla u\|_\omega^2 + \sum_{e \in \mathcal{E}_c} (1 - 2\delta_e u) \omega_e$$

Note that, from the definition of the gradient, the above formula is correct if we have ordered first the vertices in S , so that $\delta_e \chi_S \geq 0$. Thus, we can obtain an optimal solution if we minimize

$$J_{**}(S) = -2 \sum_{j \in S} u_j + \lambda \sum_{e \in \mathcal{E}_c} (1 - 2\delta_e u) \omega_e$$

4 Constrained Segmentation

In this section, we propose a three stage segmentation algorithm. The steps are as follows: (1) smoothing step which removes the local extrema in the intensity vector; (2) Selecting M voxels and constructing a connected component in the graph containing all of these voxels; (3) trimming the connected component so that the approximation to the “solid” part of the image has exactly M voxels.

4.1 Step 1: Removing Local Maxima

For a fixed G , we say that u has a strict local maximum at $K \in \mathcal{V}$ if and only if

$$u_K > \max\{u_J, \quad J \in \mathcal{N}(K)\}.$$

Since by assumption we are looking for segmentation with $|S| > 1$, all strict local maxima are due to image artefacts (e.g., noise). We can now modify the intensity and remove them, still having an admissible solution S . We use the following algorithm for removal of local maxima:

Algorithm 1. (Removal of local max) *Input:* u (a given intensity) and G (a graph). *Output:* v (modified intensity).

For $i = 1, \dots, N$.

– **If** u_i is a strict local maximum, **then**

$$v_i = \max\{u_j, \quad j \in \mathcal{N}(i)\};$$

– **else** $v_i = u_i$.

We have the following equivalence results about the segmentations corresponding to intensities u and v whose proof is straightforward.

Lemma 1. *Let v be obtained from u via Algorithm 1. Then*

- *If u satisfies (DP) then v also satisfies (DP).*
- *If $S(u)$ is a 2-phase admissible segmentation solving Problem 1, so is $S(v)$.*

4.2 Defining Edge Weights

From now on, we assume that the underlying graph G is fixed and in what follows, we take $G = G_\infty$. Furthermore, we assume $u \in [0, 1]^N$.

We aim at solving constraint segmentation problems, where the cardinality of the admissible 2-phase segmentation S is a priori known (i.e., $|S| = M$). For this purpose, we split \mathcal{V} into three subsets:

$$\begin{aligned}\mathcal{V}_1 &:= \{i \in \mathcal{V} \mid u_i \sim 1 \text{ \& } f(\nabla u_i) \leq \varepsilon\}, \\ \mathcal{V}_0 &:= \{i \in \mathcal{V} \mid u_i \sim 0 \text{ \& } f(\nabla u_i) \leq \varepsilon\}, \\ \mathcal{V}_U &:= \mathcal{V} \setminus (\mathcal{V}_0 \cup \mathcal{V}_1).\end{aligned}$$

Here, the maximal image intensity is 1 and the minimal is 0; ∇u_i is the G -gradient at i (i.e., $(\nabla u_i)_j = u_j - u_i$, $\forall j \in \mathcal{N}(i)$), $f : \mathbb{R}^{26} \rightarrow [0, +\infty)$, and ε is a small parameter, chosen by the user. The similarity relations $u_i \sim 1$ and $u_i \sim 0$ also need to be specified for the image. They should depend on the noise and blur levels. Typically, one uses $u_i \geq 1 - \eta$ and $u_i \leq \eta$ for a suitable $\eta \in (0, 1/2)$.

The idea is that $\mathcal{V}_1 \subset S$, $\mathcal{V}_0 \subset \bar{S}$, while the origin of the voxels within \mathcal{V}_U remains unclear and, depending on M , they should be distributed somehow between the two phases S and \bar{S} .

For the weights of the edges, we propose to add an “uncertainty penalizer”, e.g.,

$$\omega_{ij} := |u_i - u_j| + \delta g(f(\nabla u_i), f(\nabla u_j)), \quad \forall (i, j) \in \mathcal{E}. \quad (6)$$

Here $g : [0, +\infty)^2 \rightarrow [0, +\infty)$, and δ is a small, positive parameter. Such weights need to favorize edges between \mathcal{V}_U and $\mathcal{V}_0 \cup \mathcal{V}_1$ and penalize edges within \mathcal{V}_U . The latter will help us to “clarify” the origin of the unclear voxels, while in the same time it decouples them and they don’t cluster. Hence, the elements of \mathcal{V}_U can be treated individually, which is very important for our constraint problem.

To achieve that, we need to impose some assumptions on f, g :

Definition 7. *We say that f, g are admissible if they satisfy the following:*

- Symmetry: $f(x_1, \dots, x_{26}) = f(x_{\sigma(1)}, \dots, x_{\sigma(26)})$, resp. $g(x_1, x_2) = g(x_2, x_1)$, where $\sigma : \{1, \dots, 26\} \rightarrow \{1, \dots, 26\}$ is an arbitrary permutation.
- Positivity: $f(x) = 0$, $g(x) = 0 \iff x = \mathbf{0}$.
- 1-Homogeneity: $f(\lambda x) = \lambda f(x)$, $g(\lambda x) = \lambda g(x)$, $\forall \lambda \geq 0$.
- Monotonicity: $g(x_1 + \alpha, x_2) \geq g(x_1, x_2)$, $\forall \alpha > 0$.

Examples: $\|\cdot\|_{\ell^p}$, $\forall p \geq 1$, $\min(\cdot)$, and many others.

Lemma 2 (Properties of ω_{ij} from (6)). *Let $G = G_\infty(\mathcal{V}, \mathcal{E})$, $i \in \mathcal{V}$, $j \in \mathcal{N}(i)$, f, g are admissible, and ω_{ij} is given by (6). Then*

- (i) G is undirected graph ($w_{ij} = w_{ji}$) and w_{ij} is invariant under rotations of Ω .
- (ii) $\omega_{ij} = 0 \Leftrightarrow u|_{\mathcal{N}(i) \cup \mathcal{N}(j)} = \text{const.}$ In particular, $\omega_{ij} \sim 0$ if $\{i, j\} \subset \mathcal{V}_0 \cup \mathcal{V}_1$.
- (iii) Let $j \in \mathcal{V}_0 \cup \mathcal{V}_1$, $k \in \mathcal{V}_U \cap \mathcal{N}(i)$, and $u_i = u_j = u_k$. Then $\omega_{ij} \leq \omega_{ik}$.
If f and g are strictly monotone, then $\omega_{ij} < \omega_{ik}$.

Proof. Since f is symmetric, G is Ω -rotation-invariant. Since g is symmetric, $\omega_{ij} = \omega_{ji}$. Hence (i) is verified. Property (ii) follows from the positivity of f and g . For (iii), w.l.o.g., let $j \in \mathcal{V}_1$. Then $u_j \sim 1$, thus $u_k \sim 1$, and $k \in \mathcal{V}_U$ iff $f(\nabla u_k) > \varepsilon \geq f(\nabla u_j)$. Finally,

$$\omega_{ik} = \delta g(f(\nabla u_i), f(\nabla u_k)) \geq \delta g(f(\nabla u_i), f(\nabla u_j)) = \omega_{ij},$$

due to monotonicity of g . If g is strictly monotone, the inequality is also strict.

4.3 Stage 2: Connecting Different Components

We now focus on the second stage in the image segmentation algorithm. Let $S \subset \mathcal{V}$ be the set of voxels whose intensities are the M largest components of the intensity vector. Since such hard thresholding does not guarantee any connectivity of S , we have several connected components $S_1 \dots S_k$. Without loss of generality we may assume that S_1 has cardinality larger than the other components. Let \tilde{G} be the factor graph, where we consider two vertices equivalent if they lie in one and the same connected component S_j . We perform a *lexicographical breadth first search (LBFS)* [20] in \tilde{G} and construct the corresponding lexicographical BFS tree rooted at S_1 . For the lexicographical BFS we need to introduce ordering of the vertices, which, in our case is by intensity values. This is aimed at minimizing J_0 (or alternatively maximizing J_* , because the BFS tree contains edges between vertices with high intensity. The final step of the algorithm connects each of S_j , $j = 2, \dots, k$ with S_1 via the tree branches.

Other algorithms for choosing paths between S_1 and the rest of S_j , $j = 2, \dots, k$ which maximizes J_* can also be used in place of what we propose here.

4.4 Stage 3: Cutting Heavy Leaves

We now discuss some theoretical aspects of the third phase of the algorithm aimed at trimming the connected component from the previous section in order to obtain an image segmentation that satisfies the volume constraint.

Let $u \in \{0, 1\}^N$ be discrete, and S be the (DP) admissible 2-phase segmentation with respect to u . The latter means that $u|_S = 1$, and $u|_{\bar{S}} = 0$. Let f, g be admissible and strictly monotone, and the graph $G = G_\infty$ is build

w.r.t. the weights (6). Let S be G -connected, T be a MST of G_S , $l_T \in \mathcal{L}_T$ with $(l_T, j_T) \in \mathcal{E}_T$, and $\omega_{l_T j_T} > 0$. Then

$$l_T \in \partial S := \left\{ i \in S : \begin{array}{l} \mathcal{N}(i) \cap S \neq \emptyset \\ \mathcal{N}(i) \cap \bar{S} \neq \emptyset \end{array} \right\} = S \cap \mathcal{V}_U. \quad (7)$$

Indeed, first of all, $\mathcal{V}_0 = \text{int } \bar{S}$, $\mathcal{V}_1 = \text{int } S$, thus the set equality in (7) holds true.

Now, assume the contrary, i.e., $l_T \in \text{int } S$. Since $l_T \in \mathcal{L}_T \cap \text{int } S$, the *MST cut property*, applied for $(l_T, S \setminus \{l_T\})$ gives rise to $\min_{j \in \mathcal{N}(l_T)} \omega_{l_T j} = \omega_{l_T j_T} > 0$, and from Lemma 2(ii) it follows that $\mathcal{N}(l_T) \subset \partial S$. For every $j \in \mathcal{N}(l_T) \setminus \{j_T\}$, $(l_T, j) \notin \mathcal{E}_T$, because $l_T \in \mathcal{L}_T$. Due to the strict monotonicity of g and the positivity of f , we have for each $k \in \mathcal{N}(j) \cap (\text{int } S)^c$

$$\omega_{jk} = |u_j - u_k| + \delta g(f(\nabla u_j), f(\nabla u_k)) > \delta g(f(\nabla u_j), 0) = \omega_{j l_T}.$$

Applying again the *MST cut property* this time for $(j, S \setminus \{j\})$, we derive that there exists $k_j \in \mathcal{N}(j) \cap \text{int } S$, $k_j \neq l_T$, and $(j, k_j) \in \mathcal{E}_T$. Thus, we have a $3 \times 3 \times 3$ cube $\mathcal{N}(l_T)$, centered at l_T , all 26 boundary voxels of which are also from the G -boundary of the G -connected set S , while at least 25 of them are also G -connected to other interior points of S (different from l_T !) within the $5 \times 5 \times 5$ cube $\mathcal{N}^2(l_T)$, centered at l_T . It is straightforward to show that there should be at least 6 different external points (one for each 3×3 interior of a side of the cube), and at least 5 internal points (on the side of j_T there may not be one) each two of them at a distance at least 2 in $\|\cdot\|_{\ell^\infty}$. This is impossible. The rigorous proof of (7) is rather elaborate and is beyond the scope of the paper. What we need is a corollary from this result, which we state now.

Proposition 1. *Let $u \in \{0, 1\}^N$ be discrete, S be the admissible 2-phase segmentation with respect to u , f, g be admissible and strictly monotone, and the graph $G = G_\infty$ be build w.r.t. the weights (6). If S is G -connected, then for every MST T of G_S its heaviest leaf l_T belongs to \mathcal{V}_U .*

Proof. Let j_T be as before. If $\omega_{l_T j_T} > 0$ the result follows from the arguments above. Assume the contrary, i.e., $l_T \in \text{int } S$. Thus $\omega_{l_T j_T} = 0$ and Lemma 2(ii) implies $j_T \in \text{int } S$, and $\mathcal{L}_T \subset \text{int } S$. Now we aggregate l_T and j_T into a new (super) vertex/voxel l_T^1 . We obtain $S^1 = S \cup \{l_T^1\} \setminus \{i \cup j\}$, and \mathcal{E}_{S^1} can be straightforwardly derived from \mathcal{E}_S , since l_T and j_T agree on all the “doubled” edges (i.e., $\omega_{l_T k} = \omega_{j_T k}$, $\forall k \in \mathcal{N}(l_T) \cap \mathcal{N}(j_T)$). Due to the *MST contraction property*, the graph G_{S^1} is G -connected with MST $T^1(S^1, \mathcal{E}_T \setminus \{(l_T, j_T)\})$. Thus, all the leaves $\mathcal{L}_T \setminus \{l_T\}$ remain leaves in T^1 and their weight is preserved as zero, because $\omega_{l_T j_T} = 0$ was the heaviest leaf in T . $l_T^1 \in \text{int } S^1$ may or may not be a leaf in T^1 , but since

$$|\text{int } S^1| = |\text{int } S| - 1 < |\text{int } S|,$$

after finitely many contractions m ($m \leq |\text{int } S|$) we will end up with a factor graph G_{S^m} , where $\mathcal{L}_T^m \subset \text{int } S^m$ and the heaviest leaf weight is strictly positive. This leaf can appear only after aggregation, thus belongs to $\text{int } S^m$. Contradiction with the arguments above.

4.5 An Algorithm for Constrained Image Segmentation

The steps of the algorithm described above are formally written as follows.

Algorithm 2 (Constraint segmentation) *Input:* u (a given intensity), M (volume constraint), f, g (strictly monotone admissible functions), and δ (weight penalizer).

Output: S (admissible 2-phase segmentation w.r.t. u).

1. **Stage 1:** Compute G_∞ w.r.t. u and remove local maxima and local minima via Algorithm 1.
 2. Sort the intensity vector u and take the M voxels of highest intensity to be S .
 3. Find the connected components of S . If S is G -connected, **STOP**.
 4. **Else Stage 2:** Attach all of the connected components of S to the one with largest cardinality as described in Sect. 4.3 until the union of S_j and the paths between them become G -connected. We denote the union of S_k by S again and move to the next step.
 5. **Stage 3:** Calculate the weights for the graph G_S , using (6) with $f = g = \|\cdot\|_{\ell^1}$, and compute an MST T_S for G_S , using the Kruskal's algorithm [15].
 6. **While** $|S| > M$: Cut the heaviest leaf of T_S .
-

4.6 Properties of the Algorithm

Let u be the input intensity (input image). Compute $\mathcal{V}_0, \mathcal{V}_1, \mathcal{V}_U$ for it. Note that, removing local maxima and local minima is just denoising, so for the recomputed sets $\bar{\mathcal{V}}_0, \bar{\mathcal{V}}_1, \bar{\mathcal{V}}_U$ after stage 1 the following inclusions hold true $\mathcal{V}_0 \subseteq \bar{\mathcal{V}}_0$, $\mathcal{V}_1 \subseteq \bar{\mathcal{V}}_1$. Denote by C_1 the minimal G_∞ -connected set that contains $\bar{\mathcal{V}}_1$. Let S_M be the set from step 3. We say that u is *admissible*, if $\mathcal{N}(\bar{\mathcal{V}}_1) \subseteq S_M$, $|\mathcal{N}(\bar{\mathcal{V}}_1) \cup C_1| \leq M$, and $\mathcal{N}(\bar{\mathcal{V}}_0) \subseteq \bar{S}_M$. If not, it is clear that either the parameter choices in \mathcal{V}_1 or \mathcal{V}_0 were poor or the constraint parameter M approximates badly the solid phase volume.

For admissible u , Proposition 1 implies that we cut only \mathcal{V}_U voxels in stage 3, thus $\bar{\mathcal{V}}_1 \subseteq S$ at every moment. Moreover, due to Lemma 2(ii) the heaviest leaf weight is strictly positive. No $i \in \bar{\mathcal{V}}_0$ belongs to any shortest path between the S components, thus after stage 2 $\bar{\mathcal{V}}_0 \subseteq \bar{S}$. Since in step 6. We only cut, the inclusion remains true for the output image, as well. Finally, since we always cut out leaves from T_S , after stage 2 till the end S is always G_∞ -connected. To summarize:

Theorem 3. *For any admissible input image u , Algorithm 2 terminates and produces an output 2-phase segmentation S that is G_∞ -connected, has cardinality M , fully contains \mathcal{V}_1 , and doesn't intersect with \mathcal{V}_0 . The complexity of the algorithm is $\mathcal{O}(N \log N)$.*

5 A Numerical Test

In this section we assess the performance of our Algorithm 2 on a part of an image of a trabecular bone. The image is taken from [2], then convoluted with a Gaussian kernel with $\sigma = 2$ (i.e., the image is blurred), and 10% white (Gaussian) noise is added to derive the input image u . The bone part image has size $64 \times 64 \times 64$. 50604 of its voxels are bone material (porosity 80.7%), thus $M = 50604$. Figure 1 summarizes the results. The most left image is of the original discretized bone. The second one is the result of direct segmentation, where the M voxels of highest intensity are taken as the solid phase. The third one is the output of our Algorithm 2. The last one is the output of the segmentation in [11], based on fully constrained convex ℓ^2 -norm minimization.

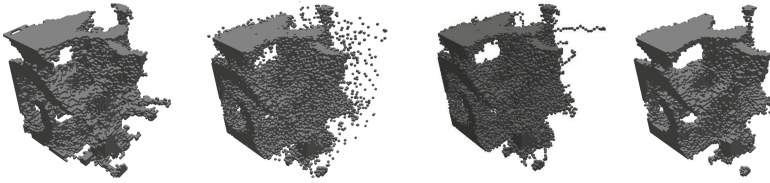


Fig. 1. From left to right: Segmented bone part (binary image), direct M -segmentation of the noisy and blurry version u , connected M -segmentation via Algorithm 2, segmentation from [11].

The direct M -segmentation is quite noisy. It consists of lots of 1-element components, as well as other larger ones. Unlike it, our segmentation is G -connected. There are still some 1-voxel-wide branches, due to small noisy components in the set S_3 at step 3., which have been aggregated to the main component C_0 in stage 2 (see Fig. 2). The result of the segmentation in [11] lacks any noise, because of the smoothing role of the edge weights there, but is not G -connected and consists of three different components, thus it is not admissible with respect to Definition 5.

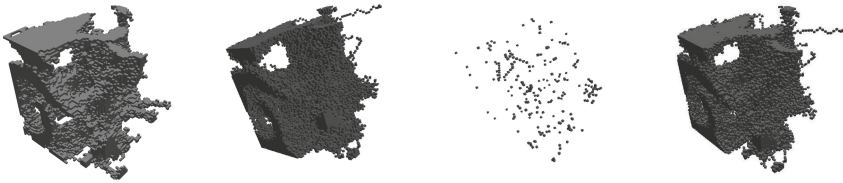


Fig. 2. From left to right: Segmented bone part (binary image), the set S after stage 2, the set of cut leaves in stage 3, and the final result of Algorithm 2.

Note that none of the S_3 connected components is of cardinality 1, due to the removing of local maximums. During the leaf cutting, some of those noisy

branches have been erased, but some of them remain in the result. The reason is the usage of only voxels' intensity values throughout steps 1–4 of the algorithm, thus no regularization has been applied in the process, and the connected components of S_3 are not as “homogeneous” as they should be when the gradient is taken into account in the expanding process. Minimizing the functional J_1 instead of J_0 in step 4 should improve the quality of the result and is a subject of future work. We want to point out that out of 234 cut leaves in stage 3, only 5 of them belong to the actual bone, and the remaining 229 are indeed noise. The ℓ^1 difference of our result with the original bone is 20 844, which is larger than the 15 524 difference of the result in [11], but is by almost a thousand better than the difference of the direct M -segmentation (which is 21 796, as computed in [11]). The former means that there is plenty of room for improvement (e.g., possible combination of the two constraint algorithms, “thickening” the minimal paths, “homogenizing” the connected components, etc.), while the latter indicates that by simply removing local extrema and only replacing 234 candidate voxels with another, better group of 234 voxels, we already gain a lot.

6 Conclusions and Future Work

We proposed and tested a class of algorithms for *constrained image segmentation*. The algorithms are based on the minimization of suitable functionals measuring the best approximation of the input image within the space of step functions. For the output image, the approximate segmentation produced by the algorithm has a connected solid phase with fixed volume. Such type of algorithms, and especially multilevel versions of these algorithms, show potential to be robust tools in the image analysis.

Acknowledgments. The research is supported in part by the project AComIn “Advanced Computing for Innovation”, grant 316087, funded by the FP7 Capacity Program. The research of Ludmil Zikatanov is supported in part by NSF DMS-1217142 and NSF DMS-1418843.

References

1. Amghibech, S.: Eigenvalues of the discrete p -Laplacian for graphs. *Ars Combinatoria* **67**, 283–302 (2003)
2. Beller, G., Burkhart, M., Felsenberg, D., Gowin, W., Hege, H.-C., Koller, B., Prohaska, S., Sagarin, P., Thomsen, J.: Vertebral Body Data Set ESA29-99-L3. <http://bone3d.zib.de/data/2005/ESA29-99-L3/>
3. Bezdek, J., Ehrlich, R., Full, W.: FCM: the fuzzy c-means clustering algorithm. *Comput. Geosci.* **10**(2–3), 191–203 (1984)
4. Bresson, X., Esedoglu, S., Vanderghenst, P., Thiran, J., Osher, S.: Fast global minimization of the active contour/snake model. *J. Math. Imaging Vis.* **28**(2), 151–167 (2007)

5. Bühler, T., Hein, M.: Spectral clustering based on the graph p -Laplacian. In: Proceedings of the 26th Annual International Conference on Machine Learning, pp. 81–88 (2009)
6. Cai, X., Steidl, G.: Multiclass segmentation by iterated ROF thresholding. In: Heyden, A., Kahl, F., Olsson, C., Oskarsson, M., Tai, X.-C. (eds.) EMMCVPR 2013. LNCS, vol. 8081, pp. 237–250. Springer, Heidelberg (2013)
7. Chan, T., Esedolgu, S., Nikolova, M.: Algorithms for finding global minimizers of image segmentation and denoising models. *SIAM J. Appl. Math.* **66**(5), 1632–1648 (2006)
8. Chan, T., Vese, L.: Active contours without edges. *IEEE Trans. Image Process.* **10**(2), 266–277 (2001)
9. Dong, B., Chien, A., Shen, Z.: Frame based segmentation for medical images. *Commun. Math. Sci.* **32**, 1724–1739 (2010)
10. Felzenszwalb, P.F., Huttenlocher, D.P.: Efficient graph-based image segmentation. *Int. J. Comput. Vis.* **59**(2), 167–181 (2004). <http://dx.doi.org/10.1023/B:VISI.0000022288.19776.77>
11. Georgiev, I., Harizanov, S., Vutov, Y.: Supervised 2-phase segmentation of porous media with known porosity. In: 10th International Conference on Large-Scale Scientific Computations (2015, accepted)
12. He, Y., Shafei, B., Hussaini, M.Y., Ma, J., Steidl, G.: A new fuzzy c-means method with total variation regularization for segmentation of images with noisy and incomplete data. *Pattern Recogn.* **45**, 3436–3471 (2012). <http://dx.doi.org/10.1016/j.patcog.2012.03.009>
13. Kang, S.H., Shafei, B., Steidl, G.: Supervised and transductive multi-class segmentation using p -Laplacians and RKHS methods. *J. Vis. Commun. Image Represent.* **25**(5), 1136–1148 (2014)
14. Kraus, J.K.: An algebraic preconditioning method for M -matrices: linear versus non-linear multilevel iteration. *Numer. Linear Algebra Appl.* **9**(8), 599–618 (2002). <http://dx.doi.org/10.1002/nla.281>
15. Kruskal, J.: On the shortest spanning subtree of a graph and the traveling salesman problem. *Proc. Am. Math. Soc.* **7**(1), 48–50 (1956)
16. Law, N.Y., Lee, H.K., Ng, M.K., Yip, A.M.: A semisupervised segmentation model for collections of images. *IEEE Trans. Image Proc.* **21**(6), 2955–2968 (2012)
17. von Luxburg, U.: A tutorial on spectral clustering. *Stat. Comput.* **17**(4), 395–416 (2007)
18. Mumford, D., Shah, J.: Optimal approximations by piecewise smooth functions and associated variational problems. *Commun. Pure Appl. Math.* **42**(5), 577–685 (1989)
19. Pock, T., Cremers, D., Bischof, H., Chambolle, A.: An algorithm for minimizing the Mumford-Shah functional. In: Proceedings of IEEE 12th Conference Computer Vision, pp. 1133–1140 (2009)
20. Rose, D.J., Tarjan, R.E., Lueker, G.S.: Algorithmic aspects of vertex elimination on graphs. *SIAM J. Comput.* **5**(2), 266–283 (1976)
21. Rudin, L., Osher, S., Fatemi, E.: Nonlinear total variation based noise removal algorithms. *Physica D* **60**(1–4), 259–268 (1992)
22. Shi, J., Malik, J.: Normalized cuts and image segmentation. In: Proceedings of the IEEE Conference on Computer Vision and Pattern Recognition, pp. 731–737 (1997)
23. Shi, J., Szalam, J.: Normalized cuts and image segmentation. *IEEE Trans. Pattern Anal. Mach. Intell.* **22**(8), 888–905 (2000)

24. Urquhart, R.: Graph theoretical clustering based on limited neighborhood sets. *Pattern Recogn.* **15**(3), 173–187 (1982)
25. Vese, L., Chan, T.: A multiphase level set framework for image segmentation using the Mumford and Shah model. *Int. J. Comput. Vis.* **50**(3), 271–293 (2002)
26. Weiss, Y.: Segmentation using eigenvectors: a unifying view. *Proc. Int. Conf. Comput. Vis.* **2**, 975–982 (1999)
27. Wu, Z., Leahy, R.: An optimal graph theoretic approach to data clustering: theory and its application to image segmentation. *IEEE Trans. Pattern Anal. Mach. Intell.* **11**, 1101–1113 (1993)
28. Zahn, C.T.: Graph-theoretic methods for detecting and describing gestalt clusters. *IEEE Trans. Comput.* **20**, 68–86 (1971)
29. Zhang, Y., Matuszewski, B., Shark, L., Moore, C.: Medical image segmentation using new hybrid level-set method. In: *BioMedical Visualization, MEDIVIS 2008*, pp. 71–76 (2008)

Large-Scale Scientific Computing

10th International Conference, LSSC 2015, Sozopol,
Bulgaria, June 8-12, 2015. Revised Selected Papers

Lirkov, I.; Margenov, S.; Waśniewski, J. (Eds.)

2015, XIII, 444 p. 127 illus. in color., Softcover

ISBN: 978-3-319-26519-3