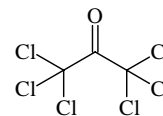


1005
ED

C₃Cl₆O

Hexachloropropanone
Hexachloroacetone

r_g	\AA^a	θ_a	deg^a
C=O	1.184(20)	O=C-C	118.9(12)
C-C	1.574(15)	Cl-C-Cl	109.4(5)
C-Cl	1.764(6)		



A slight tilt of the CCl₃ groups towards C=O and twist angles of the CCl₃ groups about the C-C bonds are estimated. The molecular symmetry remains uncertain.

No essential change in the structure was observed between the experiments made at 65 °C and 300 °C. The parameters are listed for 65 °C.

^a) Estimated standard errors, slightly larger than those in the original paper.

Andersen, P., Astrup, E.E., Borgan, A.: Acta Chem. Scand. A **28** (1974) 239.