

1023
ED

C₃F₈

Octafluoropropane

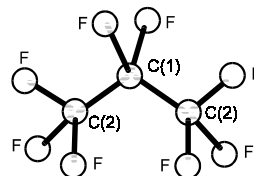
C_{2v}
F₃C–CF₂–CF₃

r_a	Å ^{a)}	θ_α	deg ^{a)}
C–F(mean)	1.330(2)	C–C–C	115.9(7)
C–C	1.546(4)	F–C(1)–F	107.0(13)
		F–C(2)–F	109.3(2)
		tilt (CF ₃) ^{b)}	0.3(5)

Local C_{3v} symmetry was assumed for the CF₃ groups.
The nozzle was at room temperature.

^{a)} Three times the estimated standard errors.

^{b)} The CF₃ group is tilted toward the CF₂ group.



Mack, H.-G., Dakkouri, M., Oberhammer, H.: J. Phys. Chem. **95** (1991) 3136.