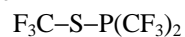


1027
ED

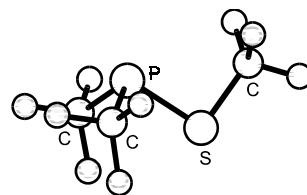
C₃F₉PS

Trifluoromethyl bis(trifluoromethyl)phosphinothioite
Bis(trifluoromethyl)(trifluoromethylthio)phosphine

C_s



r_a	Å ^{a)}	θ_a	deg ^{b)}
P–S	2.103(22)	C–P–C	106.0(15)
P–C	1.876(8)	S–P–C	98.1(9)
S–C	1.817(5)	P–S–C	97.6(28)
C–F	1.333(2)	F–C–F	107.9(4)
		ϕ ^{c)}	0.0 ^{d)}



Local C_{2v} symmetry for (CF₃)₂P moiety with each CF₃ group staggering exactly the opposite P–C bond and local C_{3v} symmetry for the CF₃ groups were assumed.
The nozzle was at room temperature.

^{a)} Three times the estimated standard errors including a systematic error.

^{b)} Three times the estimated standard errors.

^{c)} Dihedral angle lp–P–S–C, where lp is the lone pair at P atom; $\phi = 0^\circ$ for *syn* position.

^{d)} Fixed.

Korn, M., Oberhammer, H., Minkwitz, R.: J. Mol. Struct. **300** (1993) 61.