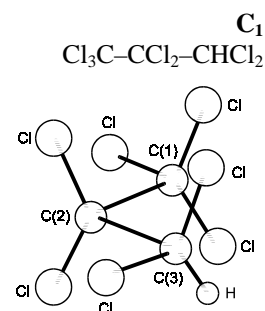


1034
ED

C₃HCl₇

1,1,1,2,2,3,3-Heptachloropropane

r_g	Å ^{a)}	θ_α	deg ^{a)}
C–C	1.603(12)	C–C–C	117.6(38)
C(1,3)–Cl	1.779(12)	C(2)–C(1,3)–Cl	110.3(12)
C(2)–Cl	1.767(28)	C(1,3)–C(2)–Cl	108.3(12)
C(3)–H	1.05(9)	C(2)–C(3)–H	109.47 ^{b)}
		δ_{2-3} ^{c)}	7.8(22)



The molecule has an all staggered *gauche* conformation.

The nozzle temperature was 80 °C.

^{a)} Twice the estimated standard errors.

^{b)} Assumed.

^{c)} Torsional angle around C(2)–C(3) bond; $\delta_{2-3} = -\delta_{1-2}$ assumed; zero position for exact staggered conformation, corresponding to a coplanar arrangement Cl–C–C–Cl.

Johnsen, J.P., Stølevik, R.: Acta Chem. Scand. Ser. A **29** (1975) 201.