

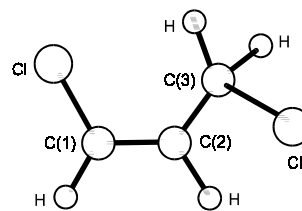
1142
ED

C₃H₄Cl₂

***cis*-1,3-Dichloro-1-propene**
(*Z*)-1,3-Dichloro-1-propene

C₁
ClHC=CH-CClH₂

r_g	Å ^{a)}	θ_α	deg ^{a)}
C-H	1.078(10)	Cl-C=C	124.5(16)
C(1)=C(2)	1.341(5)	Cl-C-C	111.9(18)
C(2)-C(3)	1.508(7)	C=C-C	125.6(15)
C(1)-Cl	1.726(3)	H-C(3)-Cl	111.0(48)
C(3)-Cl	1.805(3)	H-C-C	109 ^{b)}
		H-C=C	120 ^{b)}
		τ ^{c)}	132.7(75)



The molecule exists in a conformation in which the C(3)-Cl and C(1)=C(2) bonds are *gauche* to one another.

The nozzle temperature was 90 °C.

^{a)} Three times the estimated standard errors.

^{b)} Assumed.

^{c)} The Cl-C(3)-C(2)=C(1) torsional angle; $\tau = 0^\circ$ for the *syn* conformer.

Shen, Q.: J. Mol. Struct. **75** (1981) 303.