

1147
ED

C₃H₄Cl₄

1,1,3,3-Tetrachloropropane

C₂
Cl₂HC–CH₂–CHCl₂

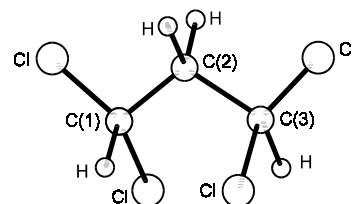
r_g	Å ^{a)}	θ_α	deg ^{a)}
C–Cl	1.782(2)	C–C–Cl	109.8(5)
C–C	1.527(10)	C–C–C	114.2(7)
C–H	1.090(16)	C(2)–C(1)–H	109.9(27)
		C(1)–C(2)–H	108.9 ^{b)}
		Cl–C–Cl	109.5(5)
		δ ^{c)}	2.0(6)

The molecule exists as *gauche-gauche* (GG) conformer.
The nozzle temperature was 62 °C.

^{a)} Estimated standard errors including a systematic error.

^{b)} Value obtained from molecular mechanics calculations.

^{c)} Torsional deviation of CHCl₂ groups from exact staggered position.



Braathen, M., Christensen, D.H., Klæboe, P., Seip, R., Stølevik, R.: Acta Chem. Scand. Ser. A
33 (1979) 437.