

1189
MW

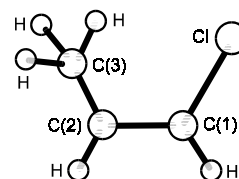
C₃H₅Cl

***cis*-1-Chloro-1-propene**
(*Z*)-1-Chloro-1-propene

C_s
H₃C–CH=CHCl

r_0	Å	θ_0	deg
C(1)=C(2)	1.336 ^{a)}	C(2)=C(1)–H	121.5 ^{a)}
C(2)–C(3)	1.501 ^{a)}	C(1)=C(2)–C(3)	124.3 ^{a)}
C(1)–H	1.081 ^{a)}	C(1)=C(2)–H	119.0 ^{a)}
C(2)–H	1.090 ^{a)}	C(3)–C(2)–H	116.7 ^{a)}
C(3)–H	1.090 ^{a)}	H–C(3)–H	107.7 ^{a)}
C(1)–Cl	1.735(15)	C(2)=C(1)–Cl	125.2(10)

^{a)} Assumed.



Beaudet, R.A.: J. Chem. Phys. **40** (1964) 2705.