

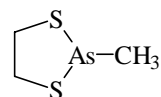
1295
ED

C₃H₇AsS₂

2-Methyl-1,3,2-dithiaarsolane

C₂ (except for the
CH₃ group)

r_a	Å ^{a)}	θ_a	deg ^{a)}
C–H (average)	1.100(17)	S–As–S	93.8(7)
C–C ^{b)}	1.548(33)	C–C–S ^{b)}	111.2(22)
C–S	1.805(9)	S–As–C	93.3(37)
As–C	1.968(20)	As–S–C	100.5(8)
As–S	2.229(2)	C–C–H, S–C–H, As–C–H	109.5 ^{c)}
		C–S–As–S	12.0(15)
		S–C–C–S ^{d)}	55.1(58)



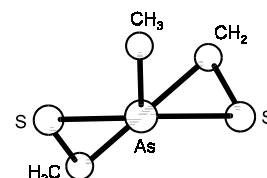
The nozzle temperatures were 393 and 408 K.

^{a)} Three times the estimated standard errors.

^{b)} Dependent parameters.

^{c)} Assumed.

^{d)} Dependent parameter.



Zaripov, N.M., Galiakberov, R.M., Golubinskii, A.V., Vilkov, L.V., Chadaeva, N.A.: Zh. Strukt. Khim. **25** No.4 (1984) 25; Russ. J. Struct. Chem. (Engl. Transl.) **25** (1984) 528.