

1383
ED

C₃H₉BS₃

Tris(methylthio)borane

essentially C_{3h}
B(SCH₃)₃

r_a	Å ^{a)}	θ_a	deg ^{a)}
C–H	1.089(4)	S–C–H	110.7(6)
S–B	1.805(2)	B–S–C	104.5(3)
S–C	1.825(3)	φ_1 ^{c)}	9.9(30)
		φ_2 ^{d)}	160.5(40)

The skeleton was found to be essentially planar. In the S...S distance (= 3.123 Å) a shrinkage of 0.003 Å is considered.

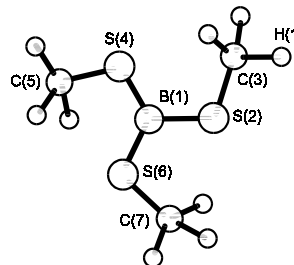
The nozzle temperature was about 80 °C.

^{a)} Estimated standard errors.

^{b)} Average value.

^{c)} The effective dihedral angle S(4)–B–S(2)–C(3).

^{d)} The effective dihedral angle B–S(2)–C(3)–H(1).



Johansen, R., Wisløff Nilssen, E., Seip, H.M., Siebert, W.: Acta Chem. Scand. **27** (1973) 3015.