

1452
ED, MW

C₃N₂O

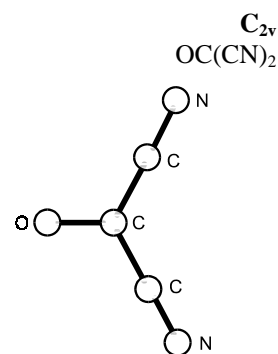
Carbonyl cyanide

| r_{av} | $\text{\AA}^a)$ | θ_{av} | deg ^{a)} |
|----------|-----------------|---------------|-------------------|
| C=O | 1.209(4) | C-C-C | 115.0(5) |
| C-C | 1.466(1) | $\delta^b)$ | -0.2(6) |
| C≡N | 1.153(2) | | |

The nozzle temperature was 15 °C.

^{a)} Three times the estimated standard errors.

^{b)} The deviation of the angle C-C≡N from 180°. A negative value corresponds to a decreasing N...N distance.



Typke, V., Dakkouri, M., Schlumberger, F.: J. Mol. Struct. **62** (1980) 111.

MW

| r_0 | \AA | θ_0 | deg |
|-------|--------------|------------|-------------------|
| C=O | 1.221(20) | C-C-C | 115.0(20) |
| C-C | 1.450(20) | C-C≡N | 180 ^{a)} |
| C≡N | 1.165(20) | | |

^{a)} Assumed.

Lees, R.M.: Can. J. Phys. **49** (1971) 367.