

1467
ED

C₄Cu₂F₆O₄

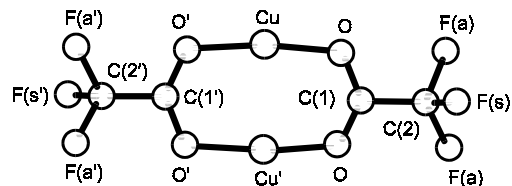
Dicopper bis(trifluoroacetate)
Bis- μ -trifluoroaceto-dicopper(I)

essentially C_{2h}

| r_g | Å ^{a)} | θ_α | deg ^{a)} |
|---------|-----------------|-----------------|-------------------|
| Cu...Cu | 2.566(18) | O–Cu–O' | 170.3(6) |
| Cu–O | 1.874(2) | F(s)–C–F(a) | 108.0(3) |
| C–O | 1.253(4) | | |
| C–C | 1.542(5) | | |
| C–F | 1.333(3) | | |

The skeleton is essentially planar. The barrier height of the CF₃ torsion is 5.9(25) kJ mol^{–1}, and the minimum of the barrier is at the position such that one of the C–F bonds lies on the plane perpendicular to the ring.

The nozzle temperature was 416 K.



^{a)} 2.6 times the estimated standard errors including a systematic error.

Iijima, K., Ohkawa, J., Shibata, S.: J. Mol. Struct. **158** (1987) 315.