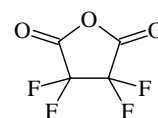


1468
ED

C₄F₄O₃

3,3,4,4-Tetrafluorooxolan-2,5-dione
Tetrafluorosuccinic anhydride

C₂



r_a	Å ^{a)}	θ_a	deg ^{a)}
O(1)–C(2)	1.387(6)	O(1)–C(2)–C(3)	107.0(7)
C(2)–C(3)	1.528(5)	C(2)–C(3)–C(4)	100.7(3)
C(3)–C(4)	1.573(9)	C(5)–O(1)–C(2)	112.5(9)
C(5)=O(6)	1.187(2)	O(1)–C(2)=O(7)	122.9(6)
C–F	1.338(2)	C(2)–C(3)–F(10)	111.5(8)
		C(2)–C(3)–F(11)	112.8(7)
		C(4)–C(3)–F(10)	111.7(10)
		C(4)–C(3)–F(11)	110.3(6)
		F–C–F	109.6(4)
		τ_1 ^{b)}	11.6(5)
		τ_2 ^{c)}	28.6(13)
		τ_3 ^{d)}	33.4(16)

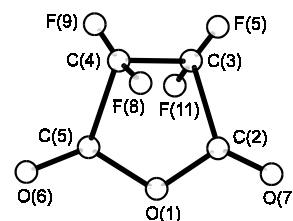
The nozzle temperature was 15 °C.

^{a)} Estimated standard errors.

^{b)} Torsional angle C(5)–O(1)–C(2)–C(3).

^{c)} Torsional angle O(1)–C(2)–C(3)–C(4).

^{d)} Torsional angle C(2)–C(3)–C(4)–C(5).



Almenningen, A., Fernholt, L., Seip, H.M.: J. Mol. Struct. **49** (1978) 333.