

1520  
MW

**C<sub>4</sub>H<sub>3</sub>ClS**

**3-Chlorothiophene**

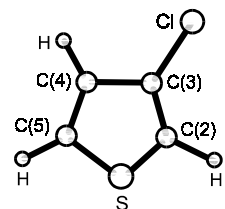
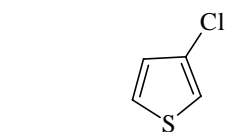
**C<sub>s</sub>**

$r_s$	Å <sup>a)</sup>	$\theta_s$	deg <sup>a)</sup>
C–S	1.714 <sup>b)</sup>	C(3)=C(2)–S	111.47 <sup>b)</sup>
C(3)=C(2)	1.3696 <sup>b)</sup>	S–C(2)–H	119.85 <sup>b)</sup>
C(2)–H	1.0776 <sup>b)</sup>	C(5)=C(4)–H	123.28 <sup>b)</sup>
C(4)–H	1.0805 <sup>b)</sup>	C(2)=C(3)–Cl	121.14(50)
C–Cl	1.7144(50)		

Atom	$ a_s $ [Å]	$ b_s $ [Å]	$ c_s $ [Å]
Cl	2.2694	0.1159	0.0 <sup>b)</sup>
S	1.9324	0.4949	0.0 <sup>b)</sup>

<sup>a)</sup> Uncertainties were not estimated in the original paper.

<sup>b)</sup> Assumed.



Caminati, W., Velino, B., Caccinelli, F., Cataliotti, R.S., Murgia, M.S., Paliani, G., Santucci, A.: J. Mol. Struct. **174** (1988) 285.