

1674
ED

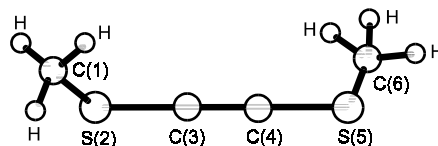
C₄H₆S₂

Bis(methylthio)ethyne
Bis(methylthio)acetylene

C₂ (skeleton)
H₃C–S–C≡C–S–CH₃

r_a	Å ^{a)}	θ_a	deg ^{a)}
C–H	1.09 ^{b)}	S–C–H	109.3(3)
C≡C	1.211 ^{b)}	C–S–C	102.7(2)
S–C(1)	1.671(2)	τ^c	86(5)
S–C(3)	1.806(2)		

The temperature of the reservoir was 85 °C.



^{a)} Estimated standard errors including a systematic error.

^{b)} Assumed.

^{c)} Dihedral angle C–S≡C–S–C.

Beagley, B., Ulbrecht, V., Katsumata, S., Lloyd, D.R., Connor, J.A., Hudson, G.A.: J. Chem. Soc., Faraday Trans. **II 73** (1977) 1278.