

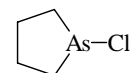
1718
ED

C₄H₈AsCl

1-Chloroarsolane

C₂ (except for
the Cl atom)

r_a	Å ^{a)}	θ_a	deg ^{a)}
C–H	1.099(13)	C–As–C	88.6(13)
C–C (average)	1.519(9)	C–C–C	109.6(18)
As–C	1.974(8)	As–C–C ^{b)}	108.1(8)
As–Cl	2.213(4)	C–As–Cl	97.5(7)
		C–C–H, As–C–H	109.5 ^{c)}
		τ_1 ^{b) d)}	12.0(16)
		τ_2 ^{b) e)}	12.0(16)
		τ_3 ^{b) f)}	44.7(55)



The nozzle temperature was 353 K.

^{a)} Three times the estimated standard errors.

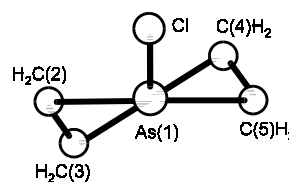
^{b)} Dependent parameter.

^{c)} Assumed.

^{d)} Torsional angle C(4)–C(5)–As–C(2).

^{e)} Torsional angle C(5)–As–C(2)–C(3).

^{f)} Torsional angle C–C–C–C.



Zaripov, N.M., Galiakberov, R.M., Golubinskii, A.V., Vilkov, L.V., Chadaeva, N.A.: Zh. Strukt. Khim. **25** No. 4 (1984) 25; Russ. J. Struct. Chem. (Engl. Transl.) **25** (1984) 528.