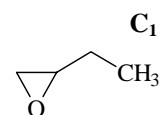


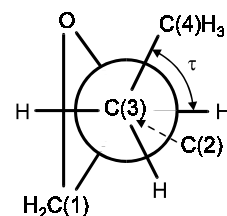
1741
MW

C₄H₈O

2-Ethyloxirane
1,2-Epoxybutane



r_0	Å	θ_0	deg
C–O	1.436 ^{a)}	C(1)–O–C(2)	61.67 ^{a)}
C(1)–C(2)	1.472 ^{a)}	H–C(1)–H	116.68 ^{a)}
C(1,2)–H	1.082 ^{a)}	H–C(2)–C(3)	116.68 ^{a)}
C(2)–C(3)	1.513 ^{a)}	C(1)–C(2)–C(3)	119.43 ^{a)}
C(3)–C(4)	1.537 ^{a)}	H–C(3,4)–H	109.43 ^{a)}
C(3,4)–H	1.09 ^{a)}	C(2)–C(3)–C(4)	116.68 ^{a)}
		φ ^{b)}	159.4 ^{a)}
		τ ^{c)}	59(1)



^{a)} Assumed.

^{b)} Angle between C(1)–C(2) and HC(1)H plane = angle between C(1)–C(2) and HC(2)C(3) plane.

^{c)} Dihedral angle H–C(2)–C(3)–C(4).

Ljunggren, S.O., Mjöberg, P.J., Bäckvall, J.E.: Z. Naturforsch. **33a** (1978) 1312.