

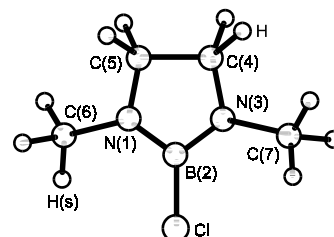
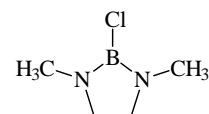
1803
ED

C₄H₁₀BClN₂

2-Chloro-1,3-dimethyl-1,3,2-diazaborolidine

C₂ assumed

r_a	Å ^{a)}	θ_a	deg ^{a)}
N–B	1.413(3)	B–N(3)–C(4)	108.6(3)
N–C ^{b)}	1.455(2)	B–N(3)–C(7)	128.0(4)
C–C	1.532(9)	N(1)–B–N(3)	110.8(3)
C–H	1.102(4)	N(3)–C(4)–C(5)	105.7(3)
B–Cl	1.770(4)	C(4)–N(3)–C(7)	119.2(4)
		N(1)–C(6)–H(s)	111.3(10)



The ring is essentially planar.

The temperature of the measurements was not given, possibly room temperature.

^{a)} Estimated standard errors.

^{b)} Average value.

Seip, H.M., Seip, R., Niedenzu, K.: J. Mol. Struct. **17** (1973) 361.