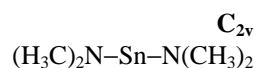


1852  
ED

**C<sub>4</sub>H<sub>12</sub>N<sub>2</sub>Sn**

**Bis(dimethylamino)tin(II)**

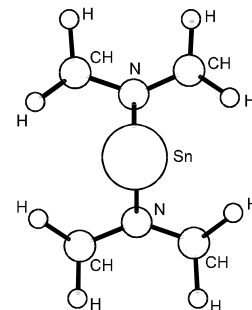


$r_g$	Å <sup>a)</sup>	$\theta$ <sup>b)</sup>	deg <sup>a)</sup>
C–H	1.20(1) <sup>c)</sup>	N–Sn–N	95(1)
C–N	1.483(3) <sup>c)</sup>	Sn–N–C	118.1(3) <sup>c)</sup>
Sn–N	1.996(4) <sup>c)</sup>	N–C–H	109 <sup>c)</sup> <sup>d)</sup>
		C–N–C	123.8 <sup>c)</sup> <sup>e)</sup>

The molecule exists as a mixture of monomer and dimer in the gas phase. The amount of monomer is 74(3)%.

The (vertical) mirror plane which contains N–Sn–N bisects the C–N–C angles at the planar N atoms and the molecule appears to have freely rotating methyl groups. See subvolume D of volume II/25 for the dimer structure.

The temperature of the measurements was 385 K.



<sup>a)</sup> Estimated standard errors including a systematic error.

<sup>b)</sup> Undefined, possibly  $\theta_a$ .

<sup>c)</sup> Average for monomer and dimer, for the angle Sn–N–C averaging excludes angle Sn–N–C of dimer ring N atom.

<sup>d)</sup> Assumed.

<sup>e)</sup> Dependent parameter.

Beagley, B., Scott, N.G., Schmidling, D.: J. Mol. Struct. **221** (1990) 15.