

---

**No. 1C-a18  $\text{KNbO}_3\text{--PbTiO}_3$** 

---

---

1b Phase diagram: Fig. 1C-a18-001.

---

3a Lattice constant: see

62Tie

---

5a Dielectric constant: Fig. 1C-a18-002.

---

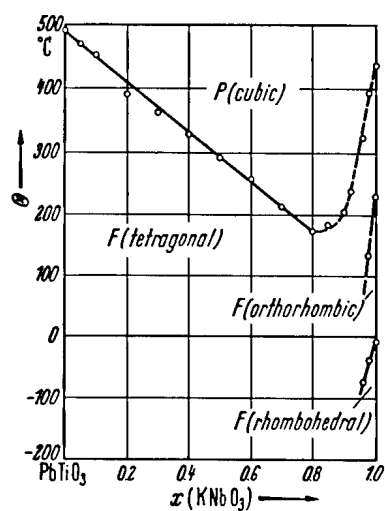
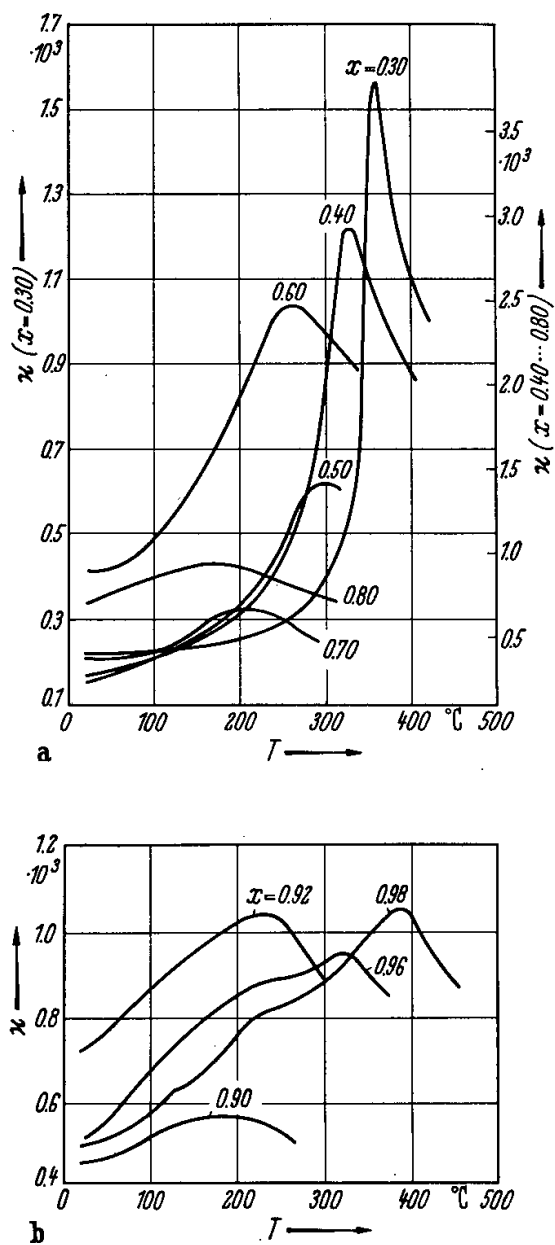


Fig. 1C-a18-001.  $(1-x)\text{PbTiO}_3\text{-}x\text{KNbO}_3$ .  $\Theta$  vs.  $x$  [62Tie].



**Fig. 1C-a18-002.**  $(1-x)\text{PbTiO}_3 \cdot x\text{KNbO}_3$  (ceramics).  $\kappa$  vs.  $T$  [62Tie]. Parameter:  $x, f = 100$  kHz.

**Reference**

62Tie     Tien, T.Y., Subbarao, E.C., Hirzo, J.: J. Am. Ceram. Soc. **45** (1962) 572.