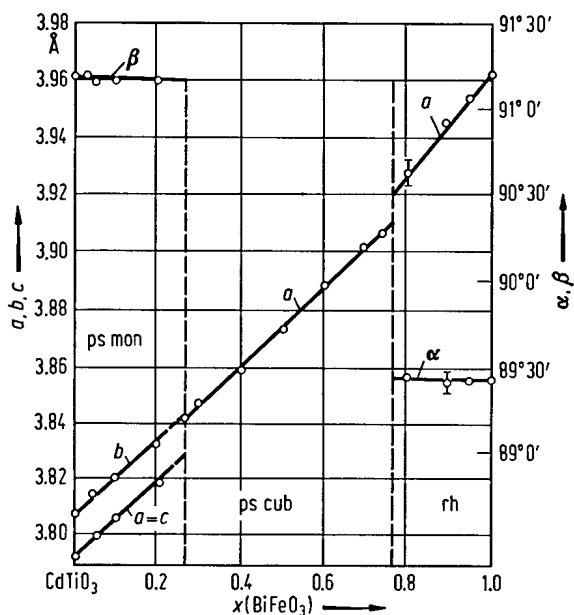


No. 1C-a38  $\text{CdTiO}_3\text{--BiFeO}_3$ 

3a Lattice parameters: Fig. 1C-a38-001.



**Fig. 1C-a38-001.**  $(1-x)\text{CdTiO}_3 \cdot x \text{BiFeO}_3$ . Lattice parameters vs.  $x$  [69Leb].

## Reference

- 69Leb Lebedev, V.M., Venevtsev, Yu.N., Zhdanov, G.S.: Kristallografiya **14** (1969) 1071; Sov. Phys. Crystallogr. (English Transl.) **14** (1970) 931.