

---

**No. 1C-a69  $\text{PbTiO}_3\text{--LaAlO}_3$** 

---

---

1b Phase diagram: Fig. 1C-a69-001.

---

3a Lattice parameters: see

62Fed

---

5a Dielectric constant: Fig. 1C-a69-002.

---

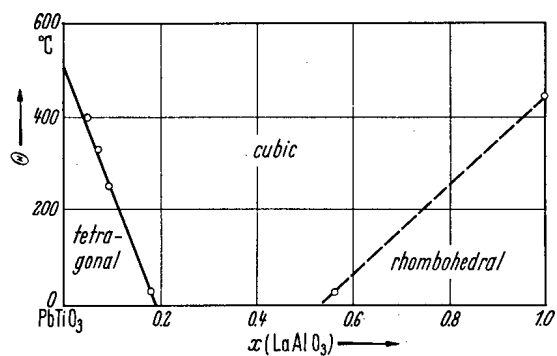
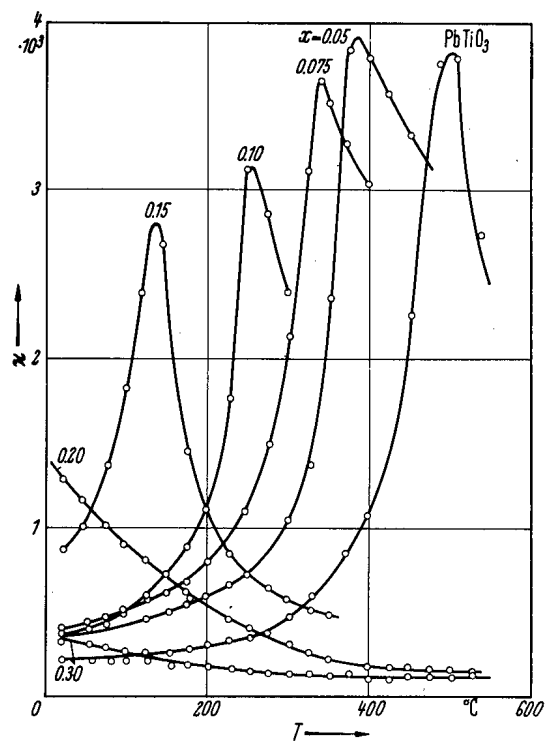


Fig. 1C-a69-001.  $(1-x)\text{PbTiO}_3\text{-}x\text{LaAlO}_3$ .  $\Theta$  vs.  $x$  [62Fed].



**Fig. 1C-a69-002.**  $(1-x)\text{PbTiO}_3 \cdot x\text{LaAlO}_3$  (ceramics).  $\kappa$  vs.  $T$  [62Fed]. Parameter:  $x$ ,  $f = 450$  kHz.

---

**Reference**

- 62Fed    Fedulov, S.A., Venevtsev, Yu.N., Dzhmukhadze, D.F.: Kristallografiya **7** (1962) 408; Sov. Phys. Crystallogr. (English Transl.) **7** (1962) 323.