
No. 1C-a71 $\text{PbTiO}_3\text{--LaFeO}_3$

1b Phase diagram: Fig. 1C-a71-001.

3a Lattice parameters: see

62Fed

5a Dielectric constant: Fig. 1C-a71-002.

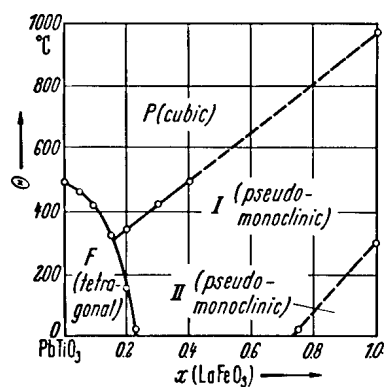


Fig. 1C-a71-001. $(1-x)\text{PbTiO}_3-x\text{LaFeO}_3$. Θ vs. x [62Fed].

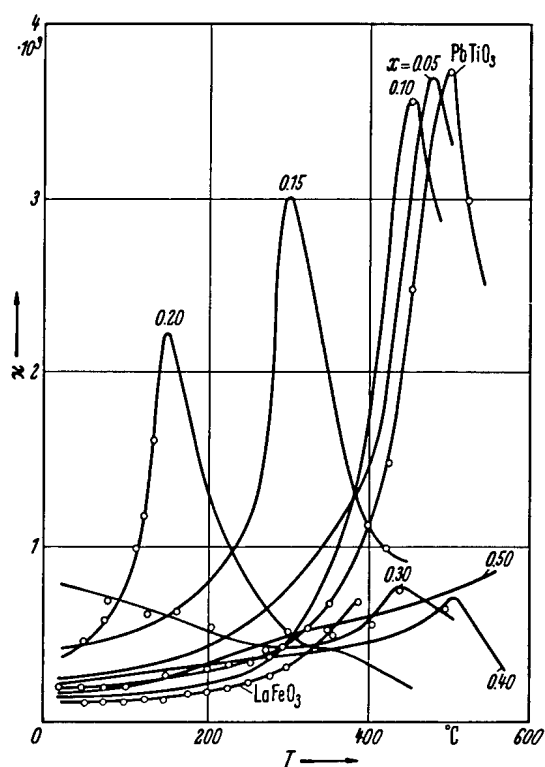


Fig. 1C-a71-002. $(1-x)\text{PbTiO}_3 \cdot x\text{LaFeO}_3$ (ceramics). κ vs. T [62Fed]. Parameter: $x, f = 450$ kHz.

Reference

- 62Fed Fedulov, S.A., Venevtsev, Yu.N., Zhdanov, G.S., Dzhmukhadze, D.F.: *Izv. Akad. Nauk SSSR, Ser. Fiz.* **26** (1962) 357; *Bull. Acad. Sci. USSR, Phys. Ser. (English Transl.)* **26** (1962) 361.