
No. 1C-a97 BiFeO₃–LaAlO₃

1b Transition temperature: Fig. 1C-a97-001.

3a Lattice parameters: Fig. 1C-a97-002.

5a Dielectric constant: Fig. 1C-a97-003.

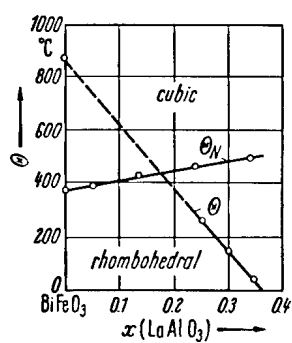


Fig. 1C-a97-001. $(1-x)\text{BiFeO}_3 \cdot x\text{LaAlO}_3$. Θ , Θ_N vs. x [64Fed].

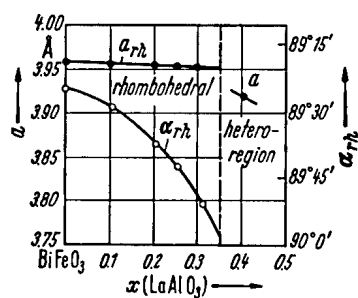


Fig. 1C-a97-002. $(1-x)\text{BiFeO}_3 \cdot x \text{LaAlO}_3$. Lattice parameters vs. x [64Fed]. In the hetero-region, the cell for main perovskite phase is close to cubic.

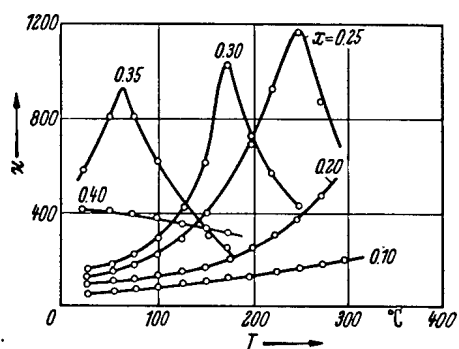


Fig. 1C-a97-003. $(1-x)\text{BiFeO}_3 \cdot x\text{LaAlO}_3$ (ceramics). κ vs. T [64Fed]. Parameter: x , $f = 500$ kHz.

Reference

- 64Fed Fedulov, S.A., Ladyzhinskii, P.B., Venevtsev, Yu.N.: Kristallografiya **9** (1964) 516; Sov. Phys. Crystallogr. (English Transl.) **9** (1965) 428.