
No. 1C-a98 BiFeO₃–LaCrO₃

1b Transition temperature: Fig. 1C-a98-001.

3a Lattice parameters: Fig. 1C-a98-002.

4 Thermal distortion: see

65Rog

12 Saturation magnetization: see Fig. 1C-a98-001.

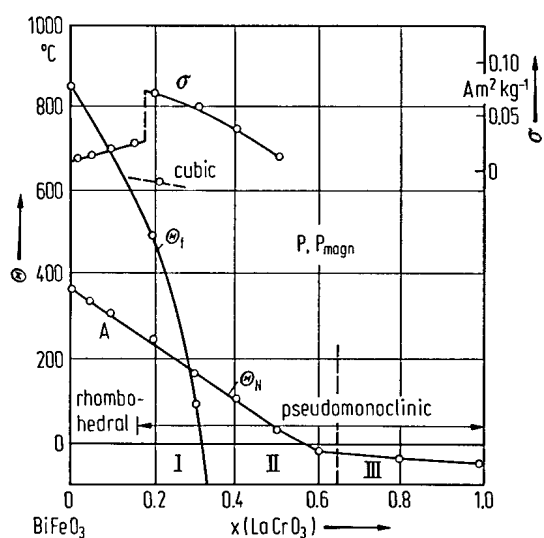


Fig. 1C-a98-001. $(1-x)\text{BiFeO}_3 \cdot x\text{LaCrO}_3$. Θ_i , Θ_N , σ vs. x [65Rog]. σ : specific magnetization. There are four modifications at RT, which are rhombohedral for $x < 0.175$ and pseudomonoclinic for $x > 0.175$ (I, II, III).

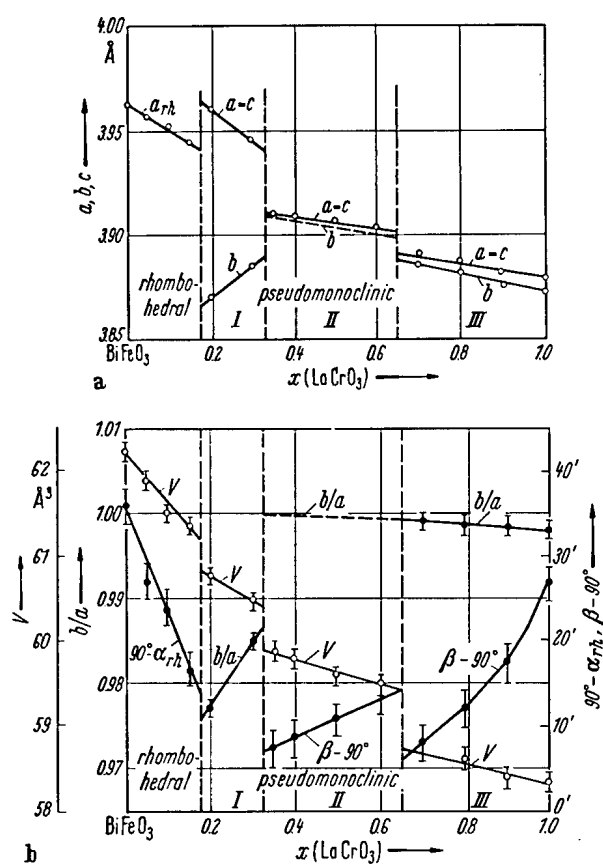


Fig. 1C-a98-002. $(1-x)\text{BiFeO}_3 \cdot x\text{LaCrO}_3$. Lattice parameters vs. x [65Rog].

Reference

- 65Rog Roginskaya, Yu.F., Venevtsev, Yu.N.: Fiz. Tverd. Tela **7** (1965) 400; Sov. Phys. Solid State (English Transl.) **7** (1965) 321.