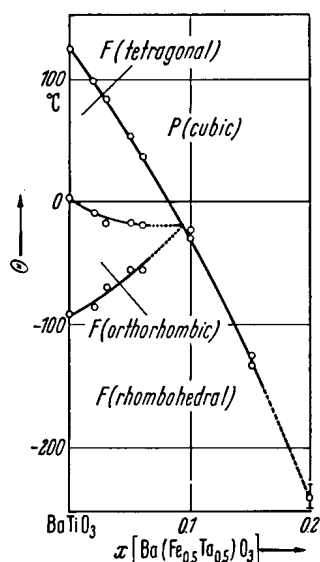


**No. 1C-b13  $\text{BaTiO}_3$ – $\text{Ba}(\text{Fe}_{1/2}\text{Ta}_{1/2})\text{O}_3$** 

1b Transition temperature: Fig. 1C-b13-001.



**Fig. 1C-b13-001.**  $(1-x)\text{BaTiO}_3 \cdot x\text{Ba}(\text{Fe}_{1/2}\text{Ta}_{1/2})\text{O}_3$ .  $\Theta$  vs.  $x$  [66Nak].

**Reference**

66Nak Nakamura, T., Nomura, S.: Jpn. J. Appl. Phys. **5** (1966) 1191.