

---

**No. 1C-b36  $\text{PbTiO}_3\text{--Pb}(\text{Mn}_{1/2}\text{Nb}_{1/2})\text{O}_3$** 

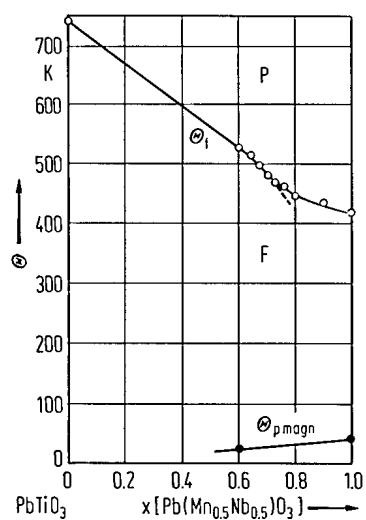
---

1b Transition temperature: Fig. 1C-b36-001.

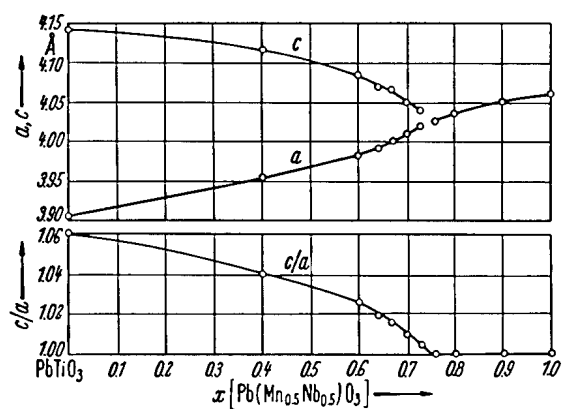
---

3a Lattice parameters: Fig. 1C-b36-002.

---



**Fig. 1C-b36-001.**  $(1-x)\text{PbTiO}_3 \cdot x\text{Pb}(\text{Mn}_{1/2}\text{Nb}_{1/2})\text{O}_3$ .  
 $\Theta_f$ ,  $\Theta_{p \text{ magn}}$  vs.  $x$  [66Hav].



**Fig. 1C-b36-002.**  $(1-x)\text{PbTiO}_3 \cdot x \text{Pb}(\text{Mn}_{1/2}\text{Nb}_{1/2})\text{O}_3$ .  $a$ ,  $c$ ,  $c/a$  vs.  $x$  [66Hav].

**Reference**

66Hav Havinga, F.F.: Philips Res. Rep. **21** (1966) 49.