

No. 1C-b61 $\text{PbZrO}_3\text{--Pb}(\text{Fe}_{1/2}\text{Ta}_{1/2})\text{O}_3$

1b Transition temperature: Fig. 1C-b61-001.

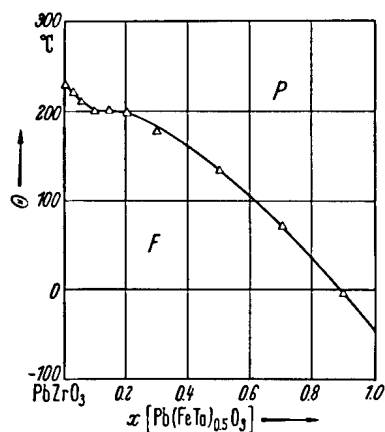


Fig. 1C-b61-001. $(1-x)\text{PbZrO}_3 \cdot x \text{Pb}(\text{Fe}_{1/2}\text{Ta}_{1/2})\text{O}_3$. Θ vs. x [62Nom]. Ferroelectric hysteresis was observed below Θ in all specimens except for pure PbZrO_3 .

Reference

62Nom Nomura, S., Kawakubo, T.: J. Phys. Soc. Jpn. **17** (1962) 573.