
No. 1C-c10 (Ba,Pb)(Ti,Sn)O₃

1b Phase diagram: Fig. 1C-c10-001.
Transition temperature: Fig. 1C-c10-002.

3a, Lattice constant and dielectric constant: see
5a

59Ike

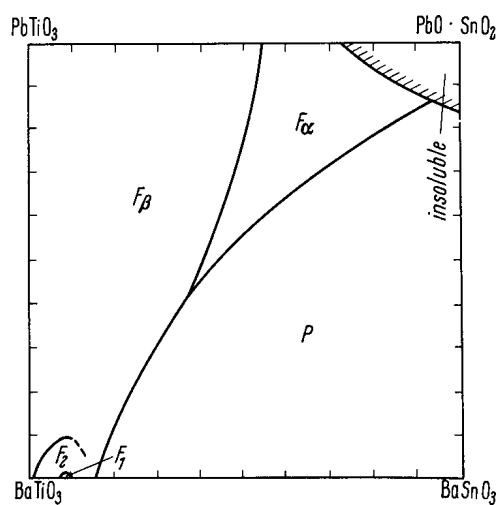


Fig. 1C-c10-001. $(\text{Ba,Pb})(\text{Ti,Sn})\text{O}_3$. Phase diagram [59Ike]. F_1 and F_2 correspond to ferroelectric rhombohedral and orthorhombic phases of BaTiO_3 , respectively.

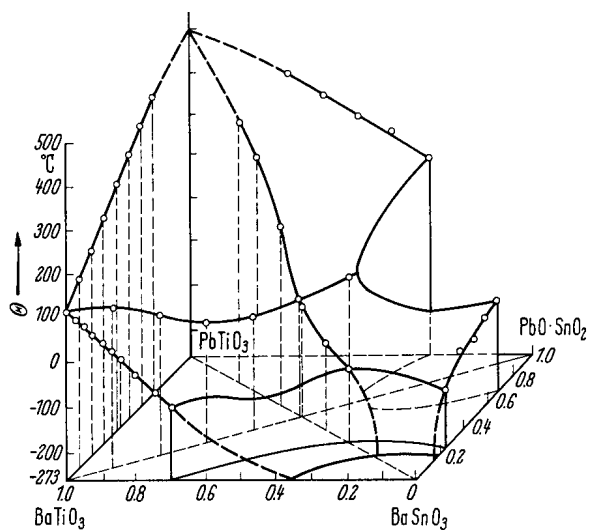


Fig. 1C-c10-002. $(\text{Ba,Pb})(\text{Ti,Sn})\text{O}_3$. Transition temperature [57Myl].

References

- 57Myl Myl'nikova, I.E.: *Izv. Akad. Nauk SSSR, Ser. Fiz.* **21** (1957) 423; *Bull. Acad. Sci. USSR, Phys. Ser. (English Transl.)* **21** (1957) 423.
- 59Ike Ikeda, T.: *J. Phys. Soc. Jpn.* **14** (1959) 1286.