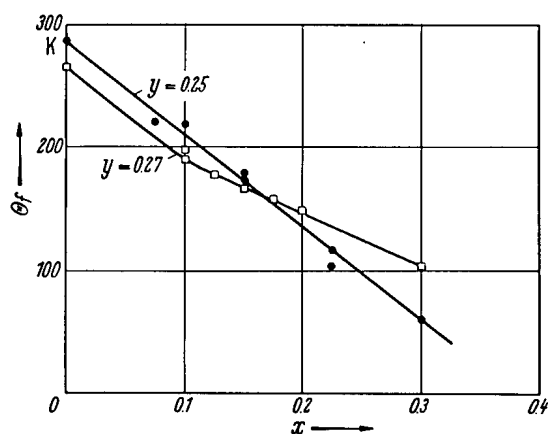


**No. 1C-c17  $\text{SrTiO}_3\text{--PbTiO}_3\text{--LaMnO}_3$** 

1b Transition temperature: Fig. 1C-c17-001.



**Fig. 1C-c17-001.**  $(1-x-y)\text{PbTiO}_3 \cdot x \text{SrTiO}_3 \cdot y \text{LaMnO}_3$ .  $\Theta_f$  vs.  $x$  [66Hav]. Parameter:  $y$ .

**Reference**

66Hav Havinga, E.E.: Philips Res. Rep. **21** (1966) 49.