

No. 1C-c45 PbTiO_3 – PbZrO_3 – $\text{Pb}(\text{Li}_{1/4}\text{Sb}_{1/4}\text{Mo}_{1/2})\text{O}_3$

16 Photochromism: Fig. 1C-c45-001.

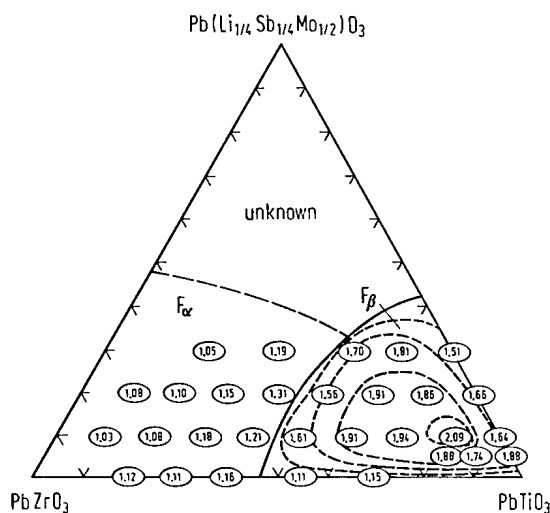


Fig. 1C-c45-001. $\text{Pb}(\text{Li}_{1/4}\text{Sb}_{1/4}\text{Mo}_{1/2})\text{O}_3$ – PbZrO_3 – PbTiO_3 (ceramics). Photochromic contrast ratio [73Ohn]. Numerals in small circles are contrast ratio at 640 nm. Fine dotted lines are presumed contours of equal contrast ratio. Contrast ratio is defined as (reflectance before exposure)/(reflectance after exposure).

Reference

 73Ohn Ohno, K., Hirano, M.: Jpn. J. Appl. Phys. **12** (1973) 317.