

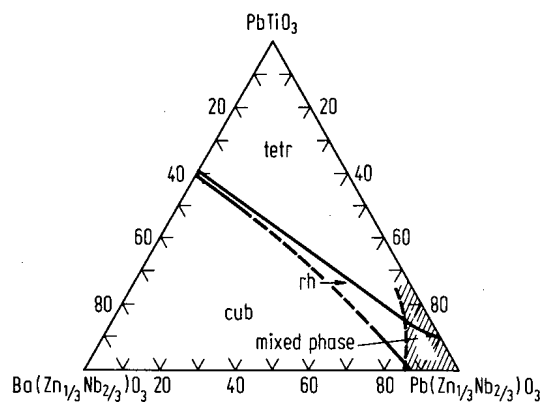
No. 1C-c52 PbTiO_3 – $\text{Pb}(\text{Zn}_{1/3}\text{Nb}_{2/3})\text{O}_3$ – $\text{Ba}(\text{Zn}_{1/3}\text{Nb}_{2/3})\text{O}_3$ **1b** Phase diagram: Fig. 1C-c52-001.

Fig. 1C-c52-001. PbTiO_3 – $\text{Pb}(\text{Zn}_{1/3}\text{Nb}_{2/3})\text{O}_3$ – $\text{Ba}(\text{Zn}_{1/3}\text{Nb}_{2/3})\text{O}_3$.
Phase diagram [72Nom]. Composition in mol%.

Reference

72Nom Nomura, S., Arima, H.: Jpn. J. Appl. Phys. **11** (1972) 358.