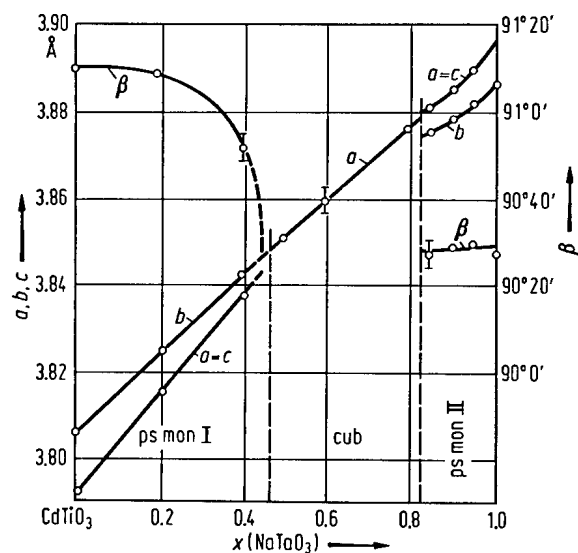


No. 1C-a21  $\text{NaTaO}_3\text{--CdTiO}_3$ 

3a Lattice parameters: Fig. 1C-a21-001.



**Fig. 1C-a21-001.**  $(1-x)\text{CdTiO}_3 \cdot x\text{NaTaO}_3$ .  $a$ ,  $b$ ,  $c$ ,  $\beta$  vs.  $x$  [69Leb].

## Reference

- 69Leb Lebedev, V.M., Venevtsev, Yu.N., Zhdanov, G.S.: Kristallografiya **14** (1969) 1071; Sov. Phys. Crystallogr. (English Transl.) **14** (1970) 931.