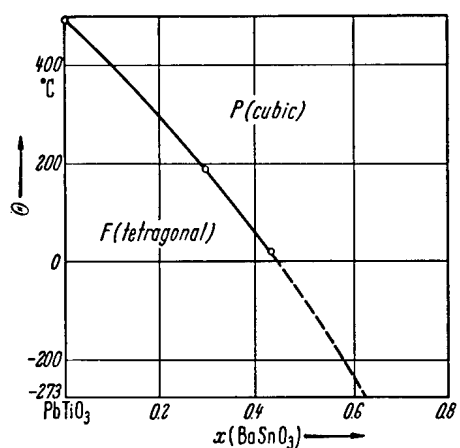


No. 1C-a66 PbTiO₃–BaSnO₃

1b Phase diagram: Fig. 1C-a66-001.

3a Lattice parameters: see

57Ven

**Fig. 1C-a66-001.** $(1-x)\text{PbTiO}_3\text{-}x\text{BaSnO}_3$. Θ vs. x [57Ven].**Reference**

- 57Ven Venevtsev, Yu.N., Kapyshev, A.G., Shumov, Yu.V.: *Kristallografiya* **2** (1957) 233; *Sov. Phys. Crystallogr. (English Transl.)* **2** (1957) 225.