
No. 1C-a67 PbTiO₃–PbO·SnO₂

1b Phase diagram: Fig. 1C-a67-001.

5a Dielectric constant: Fig. 1C-a67-002.
Pressure effect on dielectric properties: see

92Saw,
94Fuj

7a Electromechanical properties: see

55Jaf

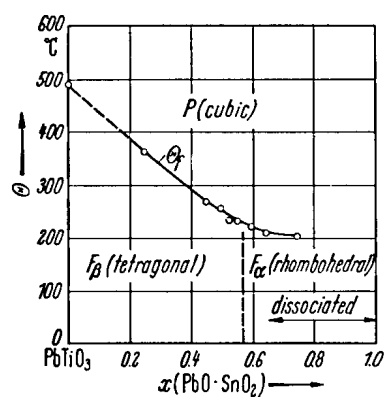


Fig. 1C-a67-001. $\text{Pb}(\text{Ti}_{1-x}\text{Sn}_x)\text{O}_3$. Θ vs. x [55Jaf].

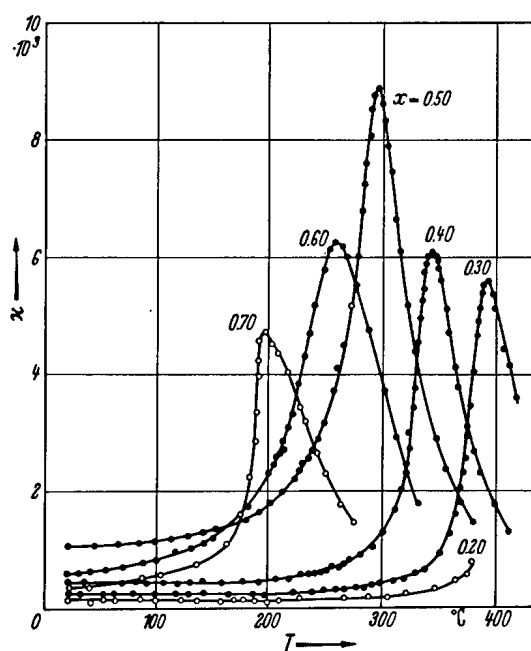


Fig. 1C-a67-002. $\text{Pb}(\text{Ti}_{1-x}\text{Sn}_x)\text{O}_3$ (ceramics). κ vs. T [55Smo]. Parameter: $x, f = 1.5$ MHz.

References

- 55Jaf Jaffe, B., Roth, R.S., Marzullo, S.: J. Res. Natl. Bur. Stand., Sect. A **55** (1955) 239.
55Smo Smolenskii, G.A., Agranovskaya, A.I., Kalinin, A.M., Fedorova, T.M.: Zh. Tekh. Fiz. **25** (1955) 2134.
92Saw Sawazaki, M., Kanai, K., Yada, S., Fujimoto, S.: Mem. Fukui Inst. Technol., No. 22 (1992) 93.
94Fuj Fujimoto, S., Kanai, K.: Ferroelectrics **154** (1994) 71.