

No. 1C-a74 $\text{PbTiO}_3\text{--BiMnO}_3$

1b Phase diagram: Fig. 1C-a74-001.

3a Lattice parameters: see

69Bok

4 Thermal expansion: see

67Bok

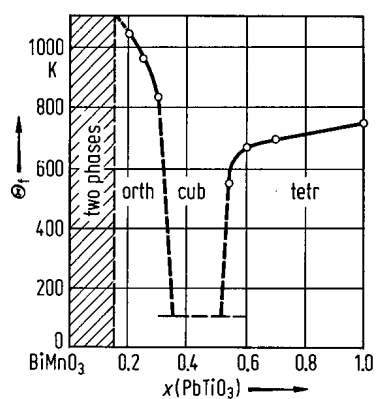


Fig. 1C-a74-001. $(1-x)\text{BiMnO}_3 \cdot x \text{PbTiO}_3$. Θ_f vs. x [67Bok].

References

- 67Bok Bokov, V.A., Grigoryan, N.A., Bryzhina, M.F.: Fiz. Tverd. Tela **9** (1967) 347; Sov. Phys. Solid State (English Transl.) **9** (1967) 262.
- 69Bok Bokov, V.A., Grigoryan, N.A., Bryzhina, M.F., Kazaryan, V.S.: Izv. Akad. Nauk SSSR, Ser. Fiz. **33** (1969) 1164; Bull. Acad. Sci. USSR, Phys. Ser. (English Transl.) **33** (1969) 1082.