

---

**No. 1C-b15  $\text{BaTiO}_3\text{--Pb}(\text{Fe}_{1/2}\text{Nb}_{1/2})\text{O}_3$** 

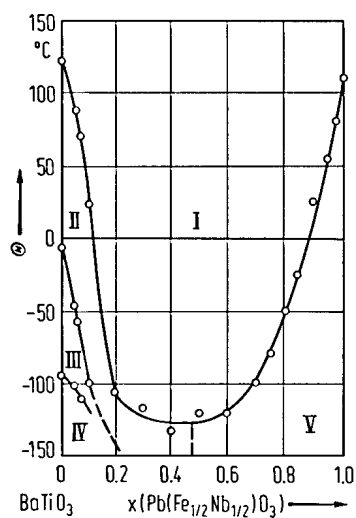
---

**1b** Phase diagram: Fig. 1C-b15-001.

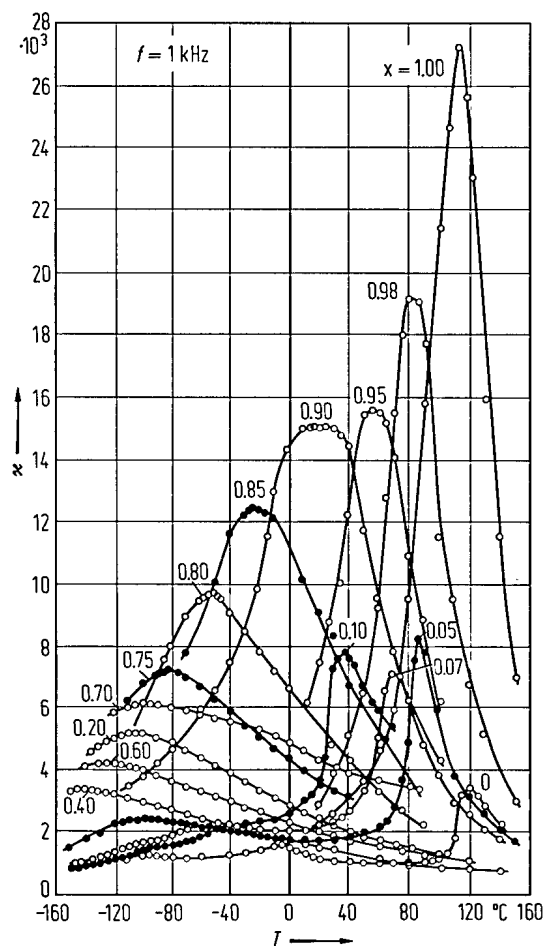
---

**5a** Dielectric constant: Fig. 1C-b15-002.

---



**Fig. 1C-b15-001.**  $(1-x)\text{BaTiO}_3 \cdot x \text{Pb}(\text{Fe}_{1/2}\text{Nb}_{1/2})\text{O}_3$ . Phase diagram [73Did]. Phases I: paraelectric cubic; II: ferroelectric tetragonal; III: ferroelectric orthorhombic; IV: ferroelectric rhombohedral; V: ferroelectric rhombohedral.



**Fig. 1C-b15-002.**  $(1-x)\text{Pb}(\text{Fe}_{1/2}\text{Nb}_{1/2})\text{O}_3 \cdot x \text{BaTiO}_3$   
(ceramics).  $\kappa$  vs.  $T$  [73Did]. Parameter:  $x$ .

---

**Reference**

- 73Did Didkovskaya, O.S., Kovalevskaya, I.P., Seryi, V.G., Klimov, V.V.: *Kristallografiya* **18** (1973) 298; *Sov. Phys. Crystallogr. (English Transl.)* **18** (1973) 184.