

No. 1C-b41 $\text{PbTiO}_3\text{--Sr}(\text{Cu}_{1/3}\text{Nb}_{2/3})\text{O}_3$

1b Phase diagram: Fig. 1C-b41-001.

3a, Structural and dielectric properties: see
5a

71Dzh

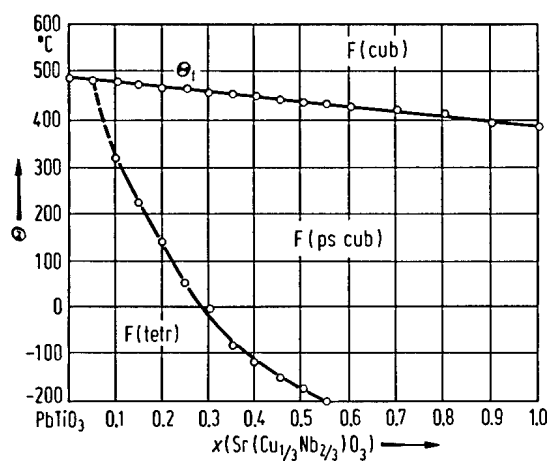


Fig. 1C-b41-001. $(1-x)\text{PbTiO}_3\text{--}x\text{Sr}(\text{Cu}_{1/3}\text{Nb}_{2/3})\text{O}_3$. Θ vs. x [71Dzh].

Reference

71Dzh Dzhmukhadze, D.F., Venevtsev, Yu.N., Zhdanov, G.S.: Kristallografiya **16** (1971) 172; Sov. Phys. Crystallogr. (English Transl.) **16** (1971) 136.