
No. 1C-c13 $\text{NaNbO}_3\text{--SrNb}_2\text{O}_6\text{--CdNb}_2\text{O}_6$

3a Lattice parameter: Fig. 1C-c13-001.

4 Thermal distortion: see

68Ten

5a Dielectric constant: Fig. 1C-c13-002.

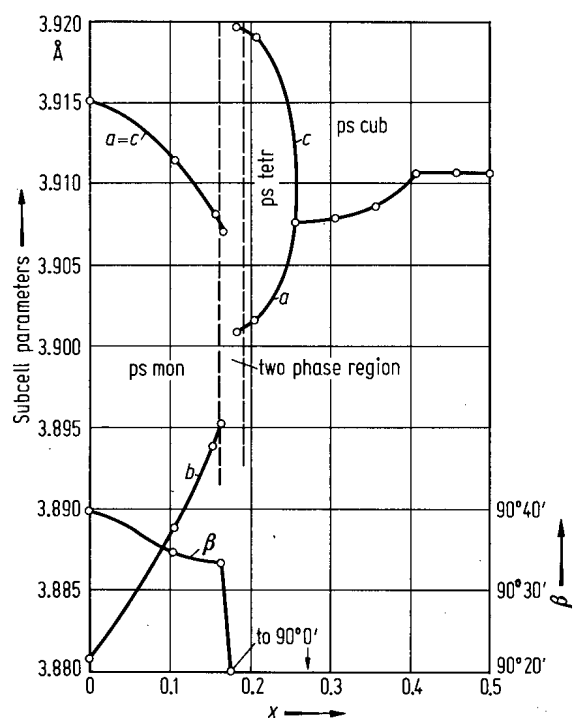


Fig. 1C-c13-001. $[\text{Na}_{1-x}(\text{Sr}_x\text{Cd}_{1-y})_{0.5}]\text{NbO}_3$. Subcell parameters vs. x at $y = 1/2$, $T = 25^\circ\text{C}$ [68Ten].

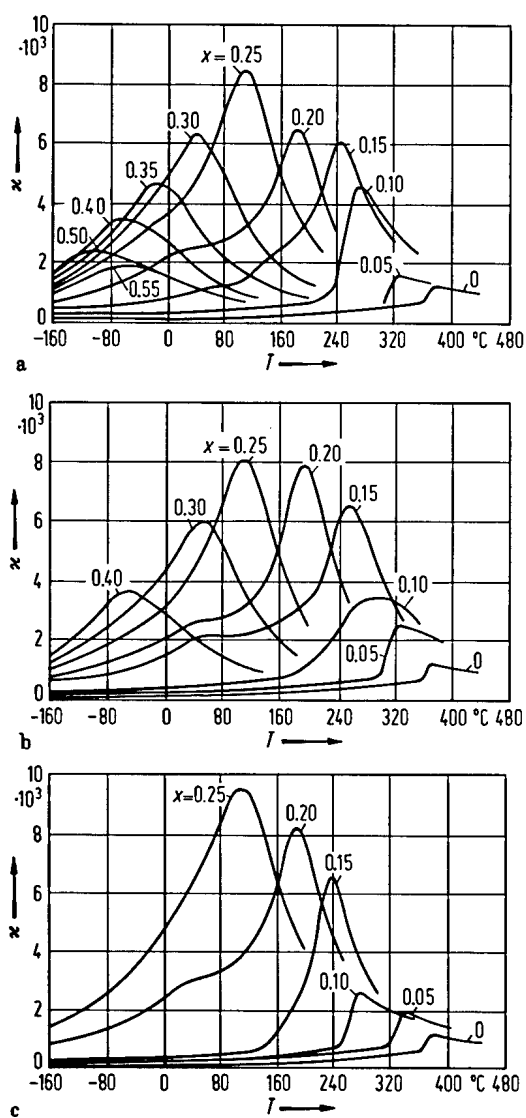


Fig. 1C-c13-002. $[\text{Na}_{1-x}(\text{Sr}_y\text{Cd}_{1-y})_{0.5}]\text{NbO}_3$ (ceramics). κ vs. T [68Ten]. Parameter: x . $f = 100$ kHz. (a) $y = 1/2$. (b) $y = 1/3$. (c) $y = 2/3$.

Reference

68Ten Tennery, V.J.: J. Am. Ceram. Soc. **51** (1968) 183.