

No. 1C-c14 CaTiO_3 – SrTiO_3 – BaTiO_3

1b, Phase diagram and lattice parameter: Fig. 1C-c14-001.

3a

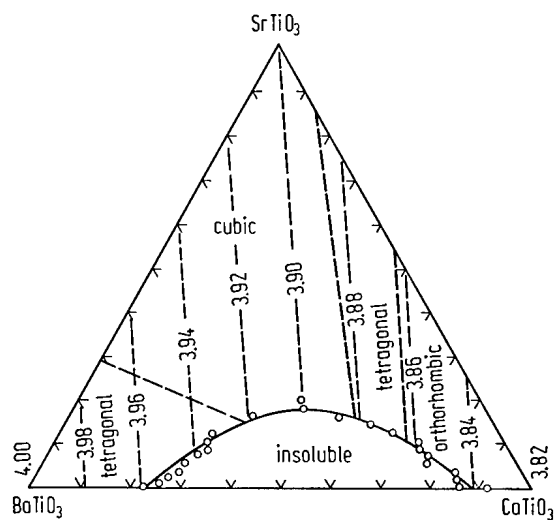


Fig. 1C-c14-001. $(\text{Sr},\text{Ba},\text{Ca})\text{TiO}_3$. Phase diagram [55McQ]. Figures indicate perovskite subcell constants in Å.

Reference

55McQ McQuarrie, M.: J. Am. Ceram. Soc. **38** (1955) 444.