
No. 1C-c32 $\text{PbTiO}_3\text{--PbZrO}_3\text{--Pb}(\text{Co}_{1/2}\text{W}_{1/2})\text{O}_3$

1b Phase diagram: Fig. 1C-c32-001.

3a Lattice constant: see

70Ich

7a Electromechanical coupling: Fig. 1C-c32-002.

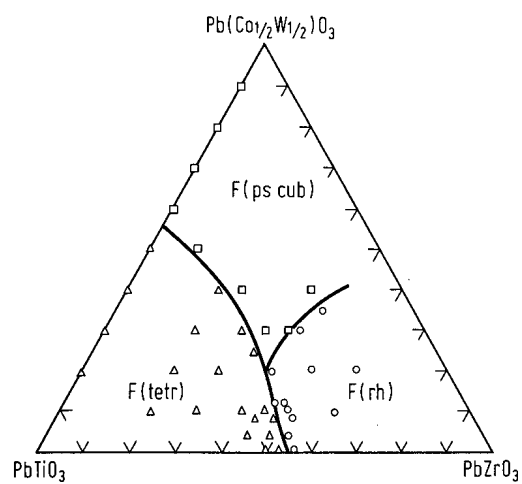


Fig. 1C-c32-001. PbTiO_3 - PbZrO_3 - $\text{Pb}(\text{Co}_{1/2}\text{W}_{1/2})\text{O}_3$. Phase diagram [70Ich].

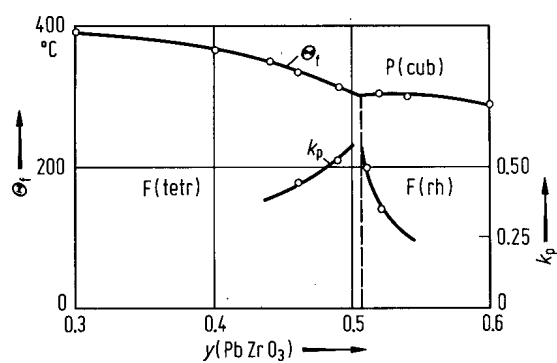


Fig. 1C-c32-002. $\text{Pb}[\text{Ti}_{0.96-y}\text{Zr}_y(\text{Co}_{1/2}\text{W}_{1/2})_{0.04}]\text{O}_3$ (ceramics). Θ_f , k_p vs. y [70Ich].

Reference

70Ich Ichinose, N., Kurihara, K.: J. Phys. Soc. Jpn. **28**, Suppl. (1970) 321.