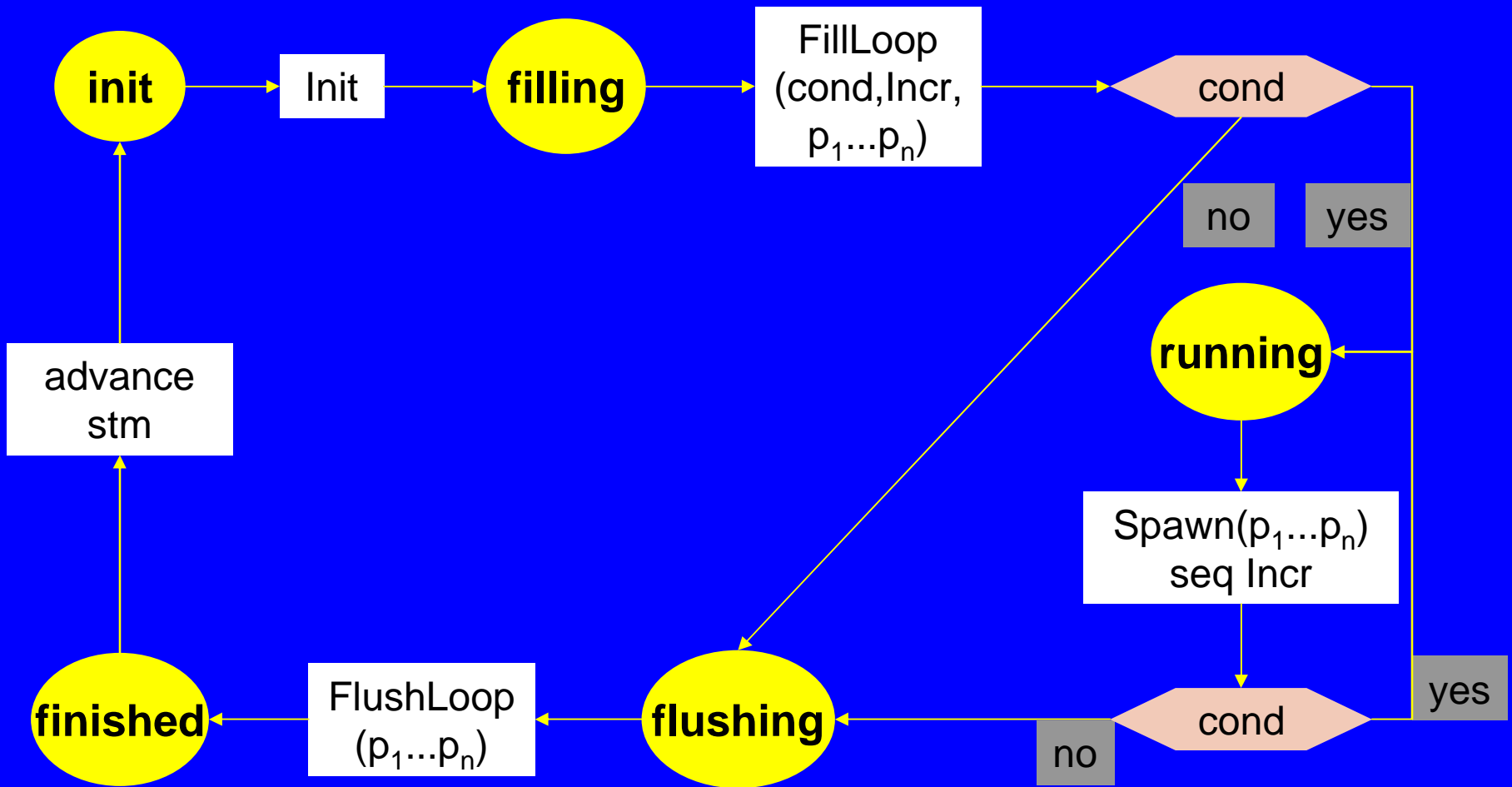


Control structure of the execution semantics of Pipe statements in SpecC:

$\text{pipe}(\text{Init}, \text{cond}, \text{Incr}, p_1, \dots, p_n)$



References

- W. Mueller and R. Doemer and A. Gerstlauer: The Formal Execution Semantics of SpecC
 - In: TR ICS-01-59 of University of California at Irvine, November 30, 2001
- E. Börger, R. Stärk: Abstract State Machines. A Method for High-Level System Design and Analysis Springer-Verlag 2003, see <http://www.di.unipi.it/AsmBook>
 - See Chapter 2