

Installation of IBL program on PC

1. Go to directory on this CD: **document\pan-ibl\IBL_Window_Package**
2. Run the setup.exe program to start installation the package.

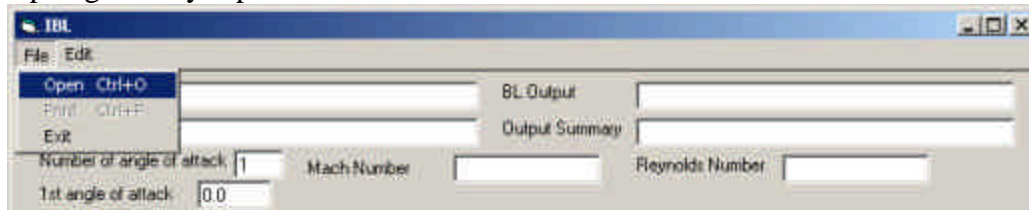
Execute the IBL program on your PC

Choose IBL from Start, Programs, Panel-IBL to run IBL program

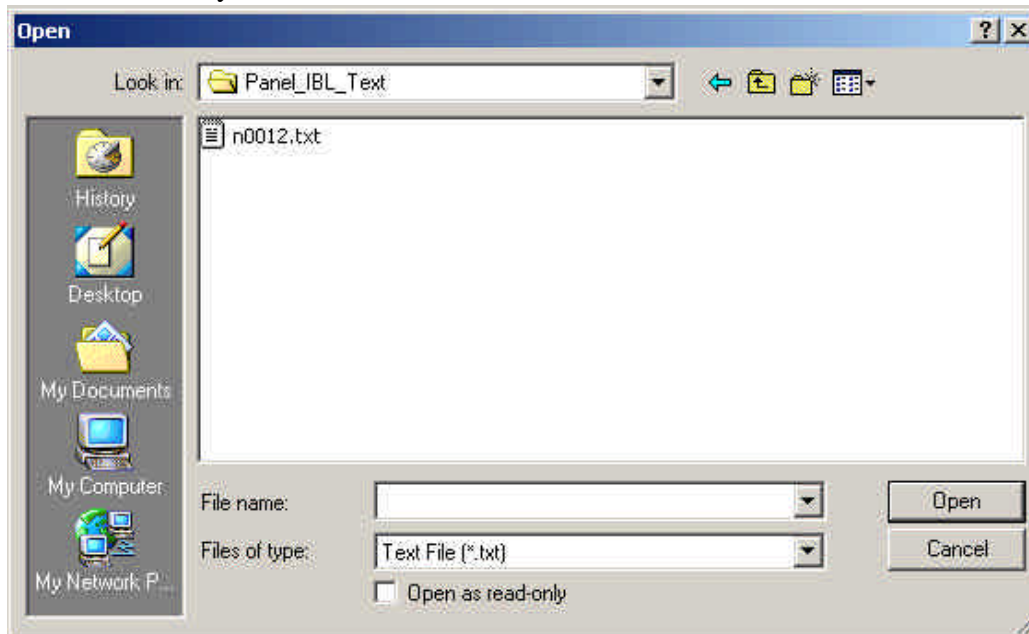
1. Start execute the IBL program (window)



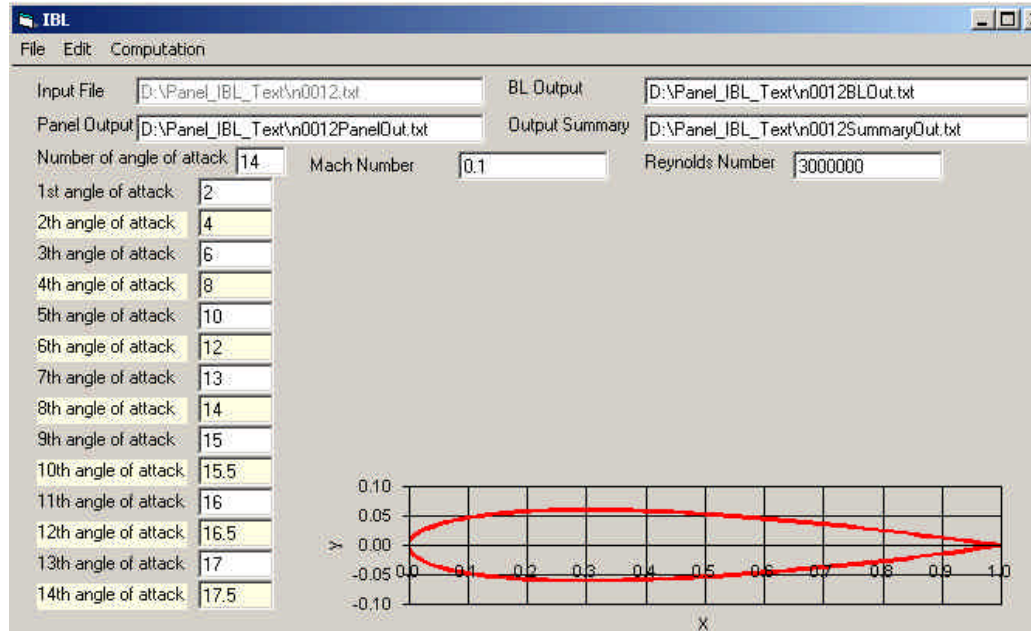
2. Open geometry input file



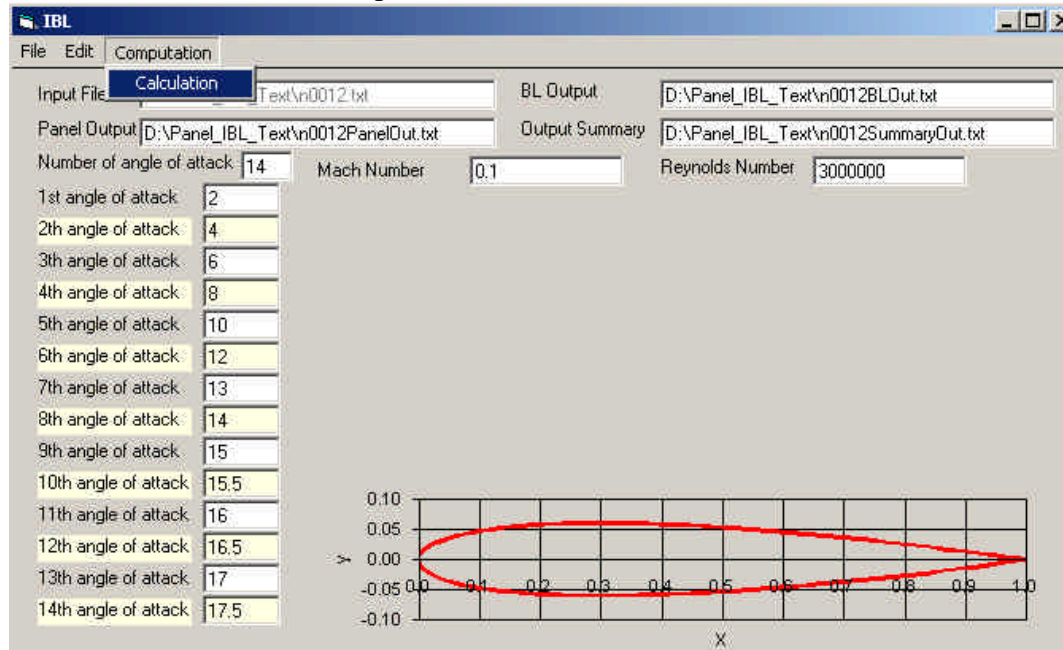
3. Select input file which contains airfoil geometry, the number of angles of attack N, Mach and Reynolds numbers.



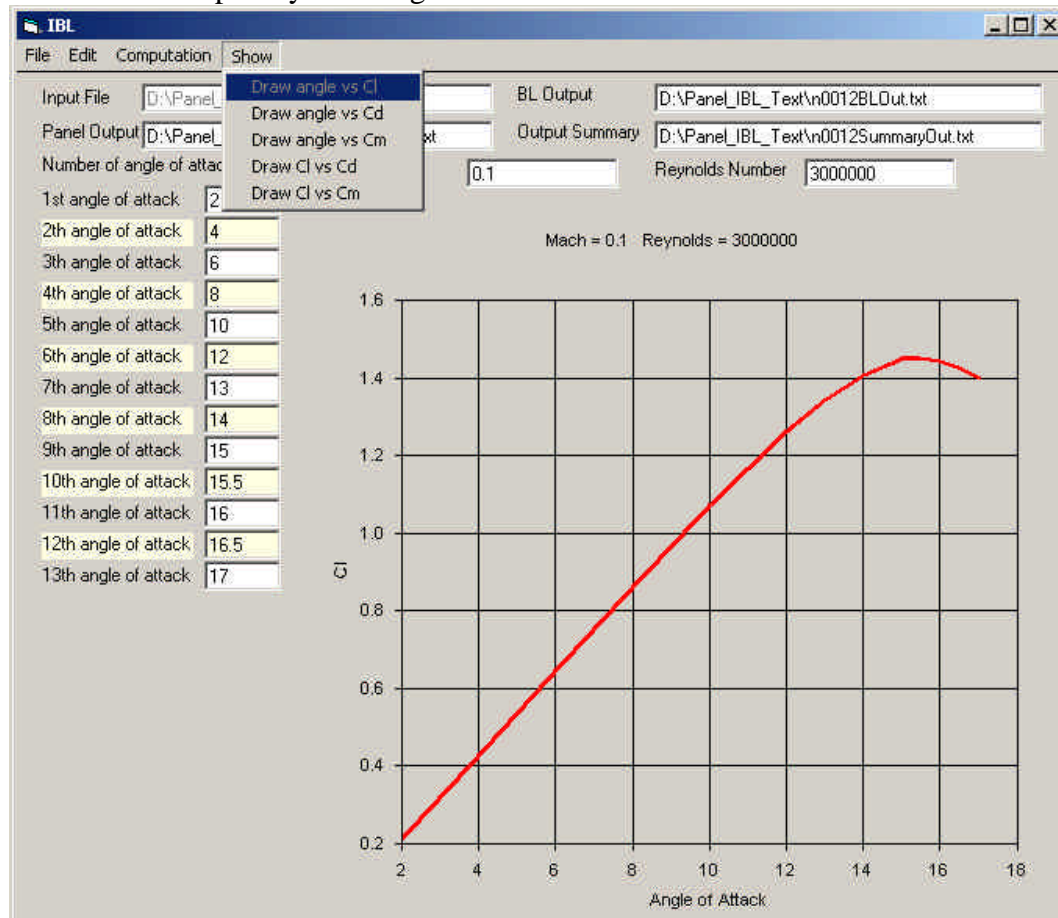
4. You can change the number of angles attack, range of angles, Mach and Reynolds numbers. The output file names can also be changed.



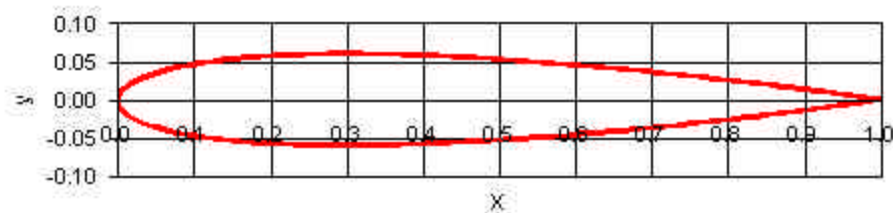
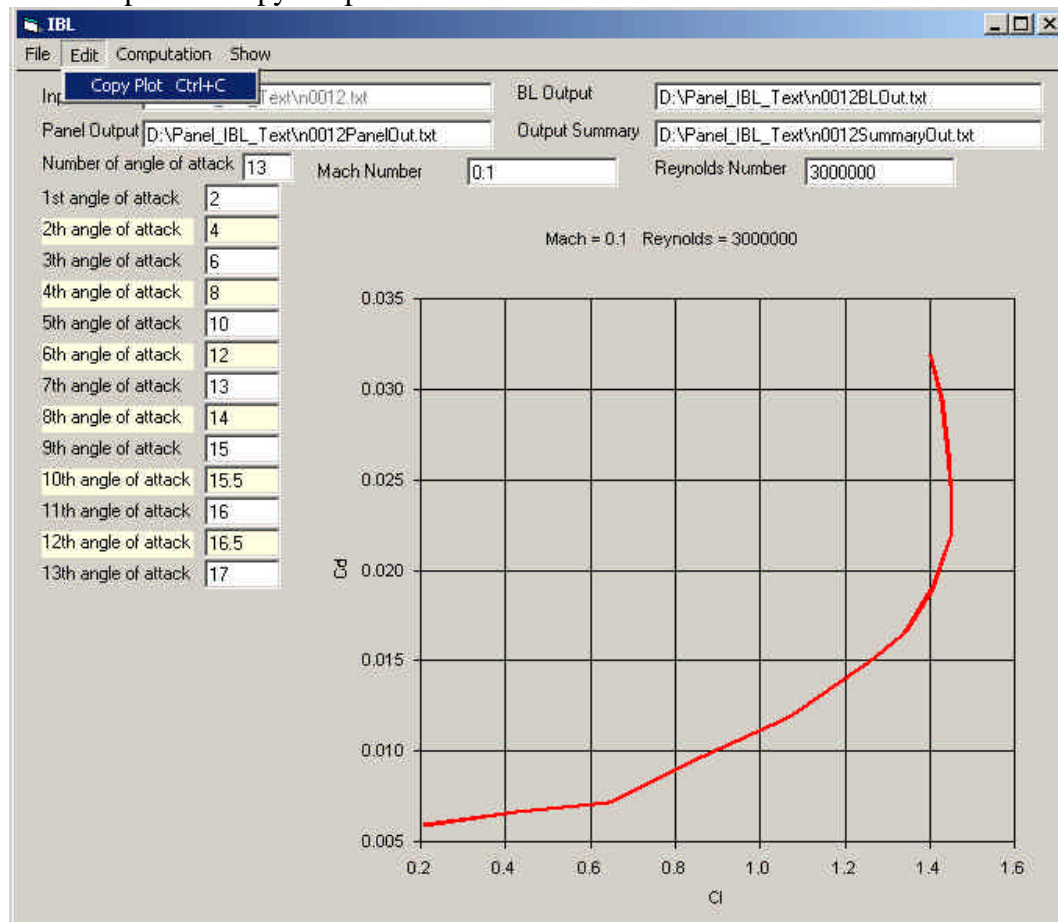
5. Click Calculation from Computation menu



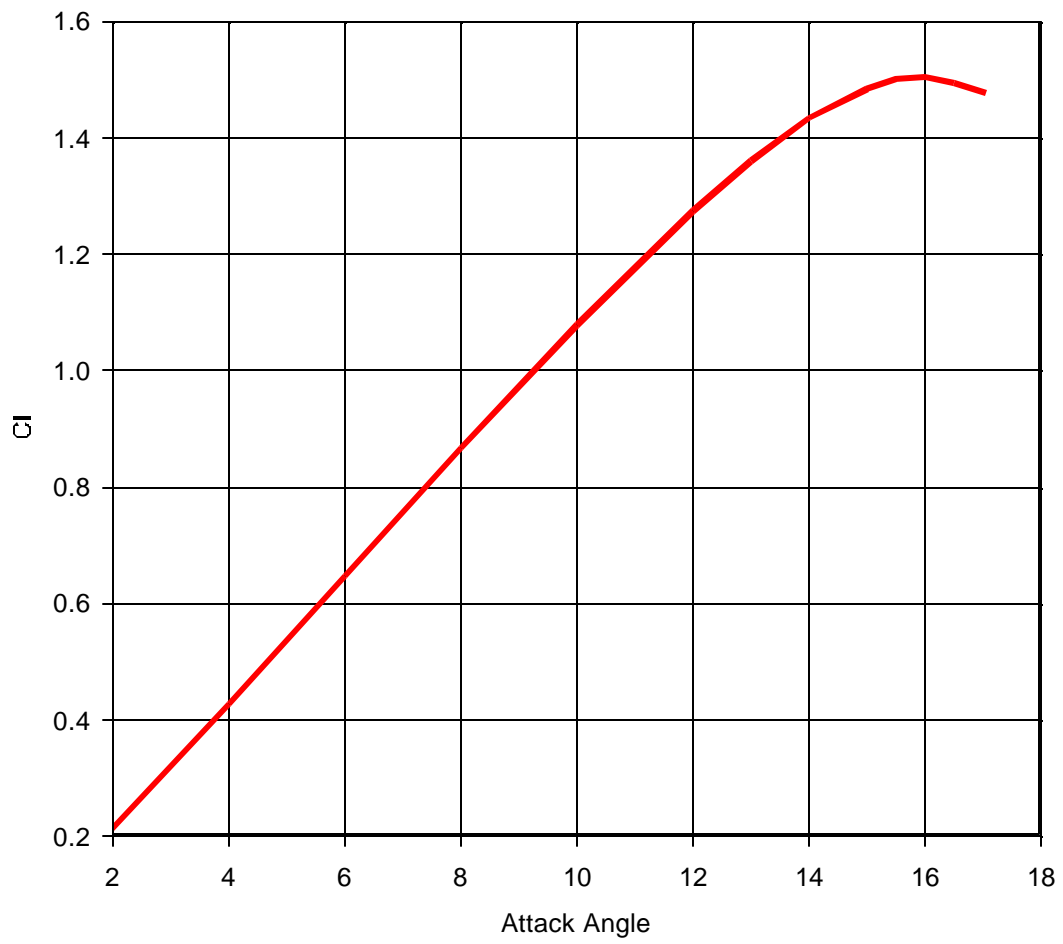
6. Show results in plot by selecting from Show menu



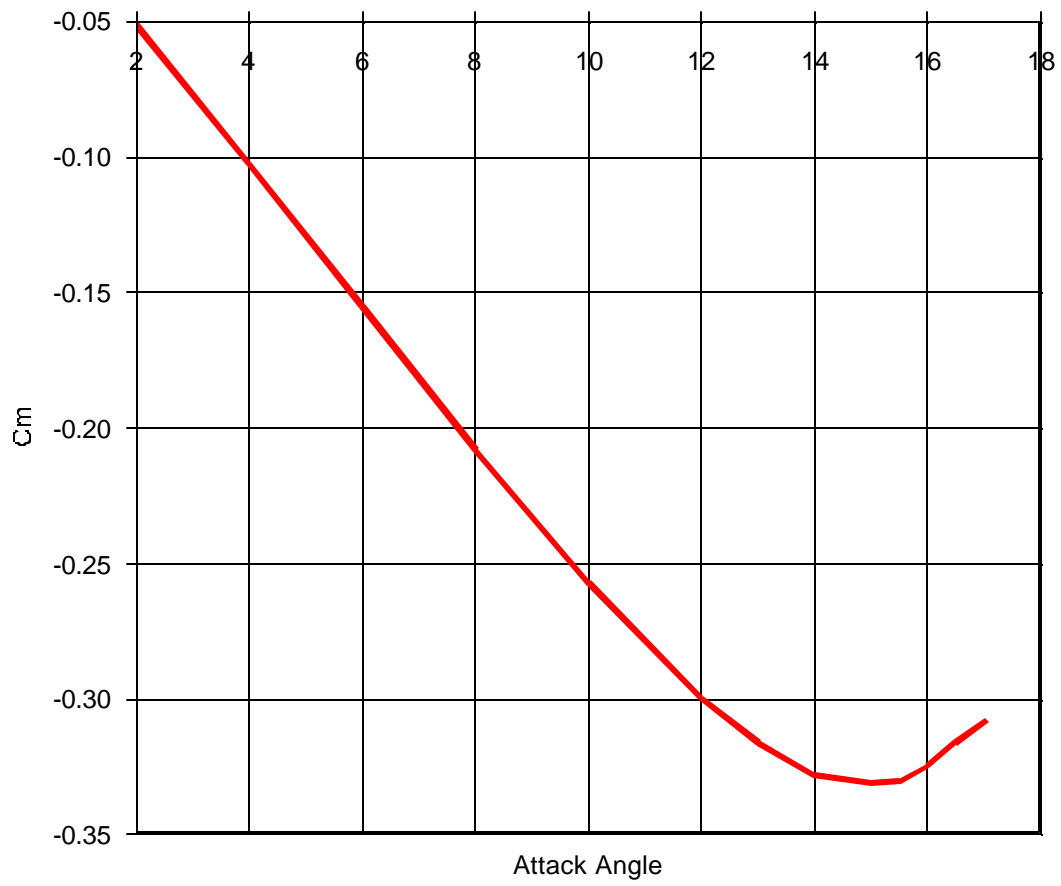
7. You can print or copy the plot to Microsoft Word file.



Mach = 0.1 Reynolds = 4000000



Mach = 0.1 Reynolds = 4000000



8. Exit the program

